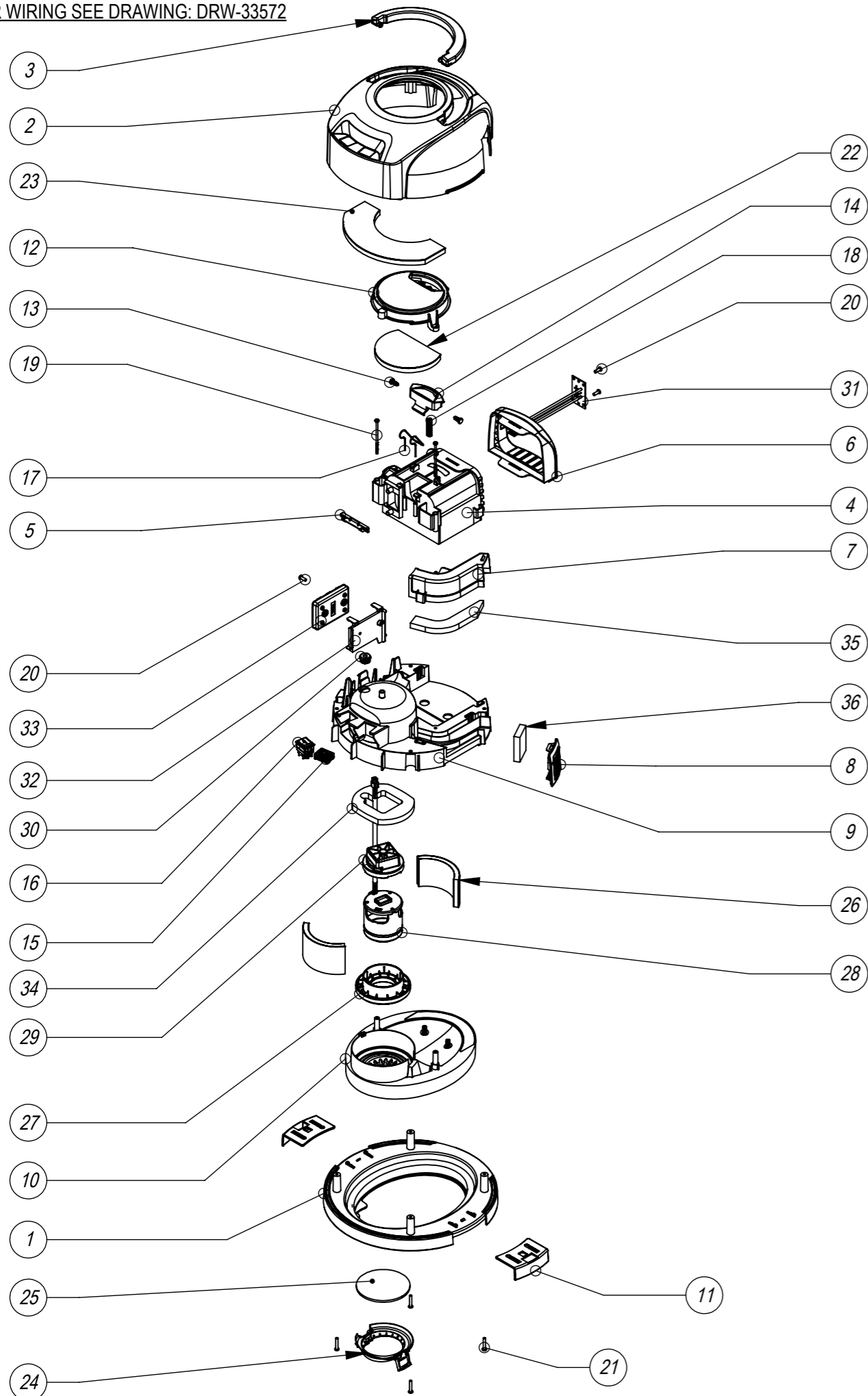


# Numatic International Spare Parts

**Model No:** HEAD STYLE 19 - 12 INCH CORDLESS - BRUSHLESS MOTOR - 2-SPEED - EXPLODED ASSEMBLY

912109  
DRAWING: DRW-33129 ISS:A05  
07/04/2021

NB: FOR WIRING SEE DRAWING: DRW-33572



# Numatic International Spare Parts

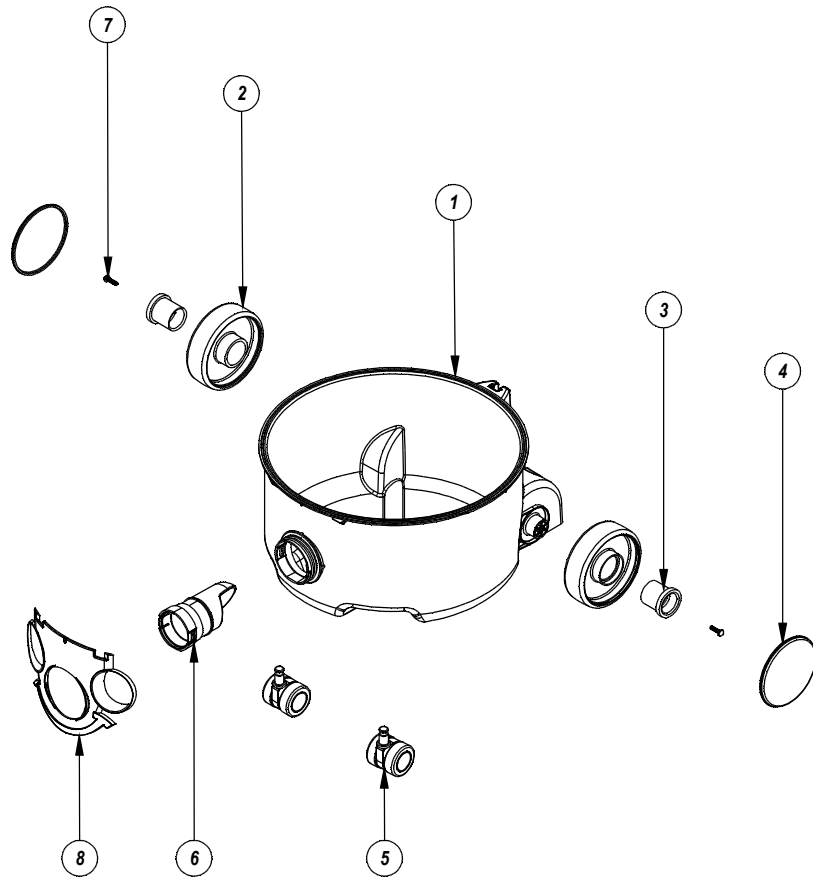
**Model No:** HEAD STYLE 19 - 12 INCH CORDLESS - BRUSHLESS MOTOR - 2-SPEED - EXPLODED ASSEMBLY

ITEM NO.	Item_No	DESCRIPTION	QTY.	COMMENTS
1	326066	HARD EDGE BOTTOM MOTOR HOUSING PROCESSED FOR NBV BATTERY VAC	1	
2	326092	PVR COVER + HANDLE PROCESSED FOR NBV BATTERY VAC	1	
3	227120	HANDLE - HVR/HET/NRV	1	
4	912066	BATTERY POD	1	
5	237641	BATTERY RELEASE SPRING RETAINER	1	
6	237602	NBV BATTERY POD FASCIA (BLACK)	1	
7	912090	NBV EXHAUST DUCT	1	
8	237640	EXHAUST AIR DUCT FASCIA	1	
9	912067	NBV MOTOR HOUSING	1	
10	237599	NBV MOTOR ADAPTOR	1	
11	237115	NRV HARD EDGE TOGGLE	2	
12	237603	NBV REELER CAP	1	
13	237597	BATTERY RELEASE TOGGLE - HINGE PIN	2	
14	237604	NBV BATTERY RELEASE CATCH (RED)	1	
15	903030	LED BATTERY LIFE INDICATOR WITH PCB	1	
16	903963	SWITCH.DPDT.RKR.HV	1	
17	216655	BATTERY RELEASE SPRING	1	
18	216465	11MM COIL SPRING	1	
19	291049	No8 X 2.95 TX-PN-PLAST SCREW (ZINC PLATED)	2	
20	291152	NO8.1/2 INCH LG.T20.SCREW.Z/PL.PLASTITE	3	
21	291082	#8 SCREW 1"L T20 PAN HEAD P/L THREAD FORMING	4	
22	303034	BATTERY RELEASE ACOUSTIC BARRIER	1	LATER MODEL 3/5/21
23	203035	BATTERY VAC COVER ACCOUSTIC BARRIER	1	LATER MODEL 3/5/21
24	203036	FILTER LOCKING CAP	1	LATER MODEL 3/5/21
25	209086	NBV PRE-MOTOR FILTER	1	LATER MODEL 3/5/21
26	203033	NBV MOTOR ACCOUSTIC BARRIER INSTALLED POSITION	2	LATER MODEL 3/5/21
27	911904	NBV MOTOR GASKET	1	
28	911895	SIP CINDERSON 74MM 36V MOTOR (350W/200W)	1	
29	911906	NBV MOTOR TOP MOUNT	1	
30	911088	WIRE GROMMET	1	
31	912057	NX CONNECTING PCB	1	
32	912056	NBV PCB MOUNT	1	
33	910251	CORDLESS RUCKSACK PCB ASSEMBLY	1	
34	912058	MOTOR POD TOP FOAM	1	
35	911836	NBV EXHAUST FOAM	1	
36	912059	NBV EXHAUST FELT	1	LATER MODEL 3/5/21

**Numatic International Spare Parts**

**Model No:** DRUM STYLE 21 EXPLODED DRAWING

Internal Code: N/A  
 PRO DRAWING: DRW-23951 ISS:A02  
 18/10/2017



**Numatic International Spare Parts**

**Model No:** DRUM STYLE 21 EXPLODED DRAWING

POS.	ITEM NO.	DESCRIPTION	QTY.	COMMENTS
1	-	DRUM STYLE 21 - MOULDING	1	CONTACT NUMATIC FOR DETAILS
2	227640	2 SHOT WHEEL ASSEMBLY	2	
3	227868	WHEEL HUB FOR 2 SHOT WHEEL	2	
4	-	WHEEL TRIM	2	CONTACT NUMATIC FOR DETAILS
5	204000	40MM PU-TYRED BLACK TWIN WHEEL CASTOR	2	
6	237119	FRONT FIT BAG CONNECTOR	1	
7	219105	No8 X 5/8 INCH LONG POZI PAN PLASTITE SCREW	2	
8	-	PARALLEL SNAP FIT FACE PRINTED	1	CONTACT NUMATIC FOR DETAILS