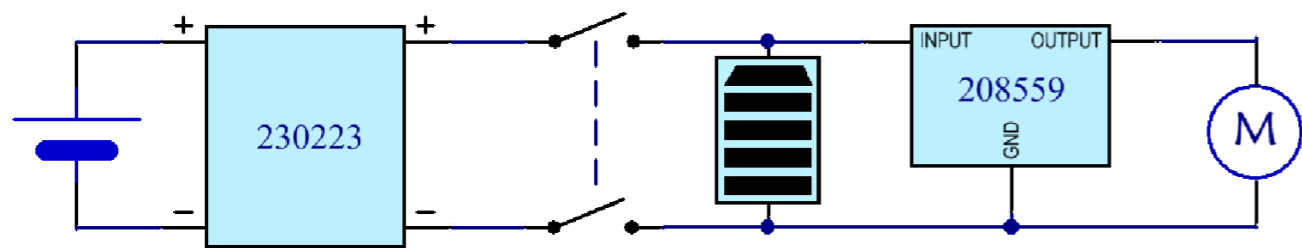


□ = CABLE TIE 220844

**Schematic:**



Wire Colours: BK-BLACK, RD-RED

Qualification of alternative supplier components upon submission of appropriate data sheets and approvals documentation	ASSEMBLY TO BE RoHS COMPLIANT	DIMENSIONS IN MILLIMETERS	TOLERANCES +10 / -5 mm UNLESS OTHERWISE STATED	PRINT SIZE A3 NOT TO SCALE	Class: CLASS II	Cable Eye Plate: ---	Special Approvals Req.:	<b>Numatic International Limited</b> TITLE: WIRING DIAGRAM.VACUUM.1S.BT.36.1SDAF.250.1.12.IBT			
CHANGE DETAIL: DRAWING SUBMITTED FOR APPROVAL PLEASE REF PRJ-000093				Internal Code: MS3	DRAWN: FP	APPROVED: Admin	DATE: 21/05/2019	THIS DRAWING IS COPYRIGHT AND IS THE PROPERTY OF NUMATIC INTERNATIONAL LTD. AND MUST NOT BE USED WITHOUT THEIR KNOWLEDGE NOR COMMUNICATED TO ANY PERSON OR COMPANY	ITEM No. 123411	DRG No. DRW-12537	REVISION No. A13

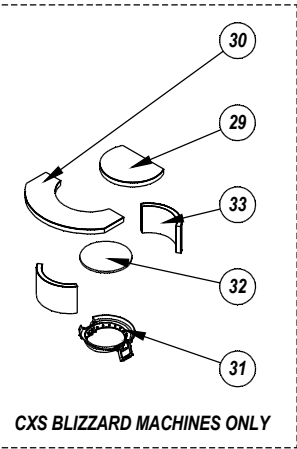
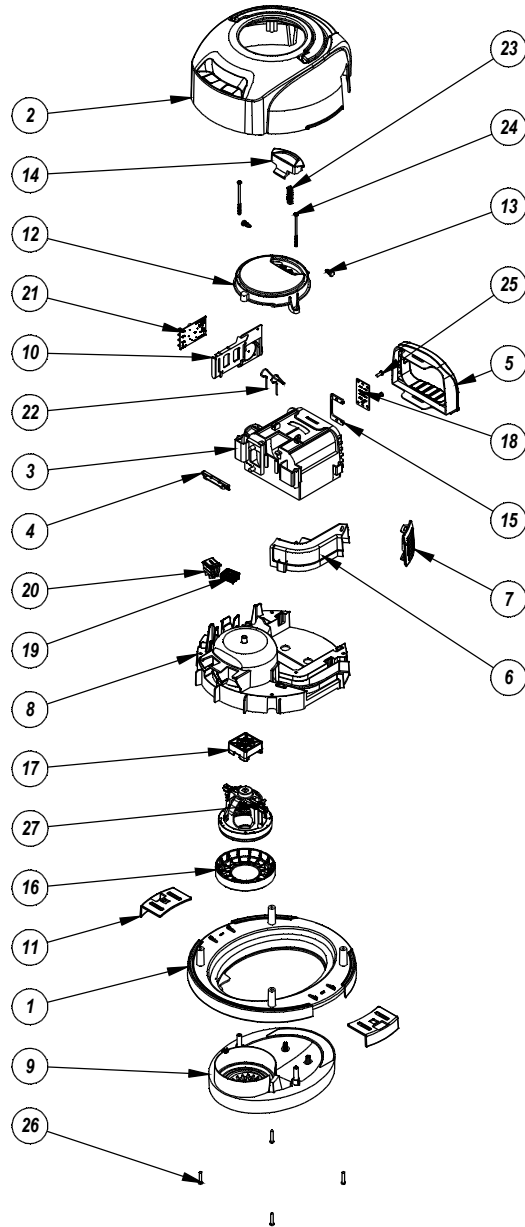
# Numatic International Spare Parts

Model No: HEAD STYLE 19 EXPLODED DRAWING

N/A  
DRAWING: DRW-12540 ISS:A13  
14/08/2017

NBV, PBT

FOR WIRING DIAGRAMS PLEASE SEE: DRW-24756  
(REFER ONLY TO THE LATEST VERSION) OR NUMATIC WEBSITE



# Numatic International Spare Parts

Model No: HEAD STYLE 19 EXPLODED DRAWING

ITEM NO.	PART NUMBER	DESCRIPTION	HEAD STYLE 19 CORDLESS VACUUM (TWO SPEED) QTY.	COMMENTS:
1	326066	HARD EDGE BOTTOM MOTOR HOUSING PROCESSED FOR NBV BATTERY VAC	1	
2	N/A	HANDLE + COVER BATTERY VACUUM	1	COLOUR/PRINT VARIATION: CONTACT NUMATIC FOR DETAILS
3	237601	BATTERY POD	1	
4	237641	BATTERY RELEASE SPRING RETAINER	1	
5	237602	BATTERY POD FASCIA	1	
6	237600	EXHAUST DUCT	1	
7	237640	EXHAUST AIR DUCT FASCIA	1	
8	237598	MOTOR HOUSING	1	
9	237599	MOTOR ADAPTOR	1	
10	237642	PCB MOUNT & FAN HOUSING	1	
11	237115	NRV HARD EDGE TOGGLE	2	
12	237603	NBV REELER CAP	1	
13	237597	BATTERY RELEASE TOGGLE - HINGE PIN	2	
14	237604	BATTERY RELEASE CATCH	1	
15	392315	PCB SPACER	1	
16	237616	MOTOR GASKET	1	
17	237617	MOTOR TOP MOUNT	1	
18	230223	BATTERY VAC CONNECTING PCB	1	
19	903030	LED BATTERY LIFE INDICATOR WITH PCB	1	
20	903963	SWITCH.DPDT.RKR.HV	1	
21	905470	MOTOR CONTROL PCB	1	
22	216655	BATTERY RELEASE SPRING	1	
23	216465	11MM COIL SPRING	1	
24	291049	No8 X 2.95 TX-PN-PLAST SCREW (ZINC PLATED)	2	
25	291152	NO8.1/2 INCH LG.T20.SCREW.Z/PL.PLASTITE	2	
26	291082	#8 SCREW 1"L T20 PAN HEAD P/L THREAD FORMING	4	
27	902326	36V DC 1 STAGE DIRECT AIR FLOW LAMB MOTOR (DL1-36300T) SERIES	1	
28	220844	WHITE CABLE TIES	1	
29	303034	BATTERY RELEASE ACOUSTIC BARRIER	1	CXS BLIZZARD MACHINES ONLY
30	203035	BATTERY VAC COVER ACOUSTIC BARRIER	1	CXS BLIZZARD MACHINES ONLY
31	237599	FILTER LOCKING CAP	1	CXS BLIZZARD MACHINES ONLY
32	209086	NBV PRE-MOTOR FILTER	1	CXS BLIZZARD MACHINES ONLY
33	203033	NBV MOTOR ACOUSTIC BARRIER INSTALLED POSITION	2	CXS BLIZZARD MACHINES ONLY

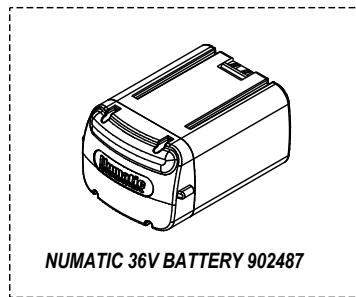
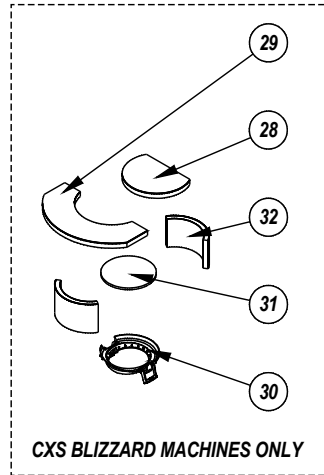
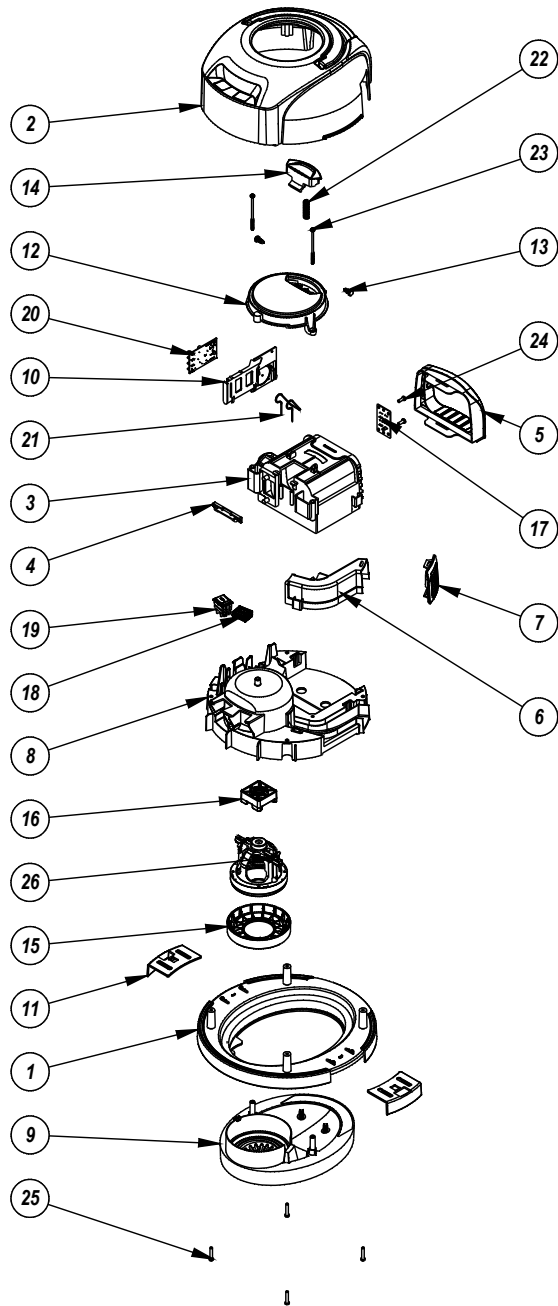
# Numatic International Spare Parts

## Model No: HEAD STYLE 19 EXPLODED DRAWING

N/A  
DRAWING: DRW-12540 ISS:A15  
21/02/2018

NBV, PBT

FOR WIRING DIAGRAMS PLEASE SEE: DRW-24756  
(REFER ONLY TO THE LATEST VERSION) OR NUMATIC WEBSITE



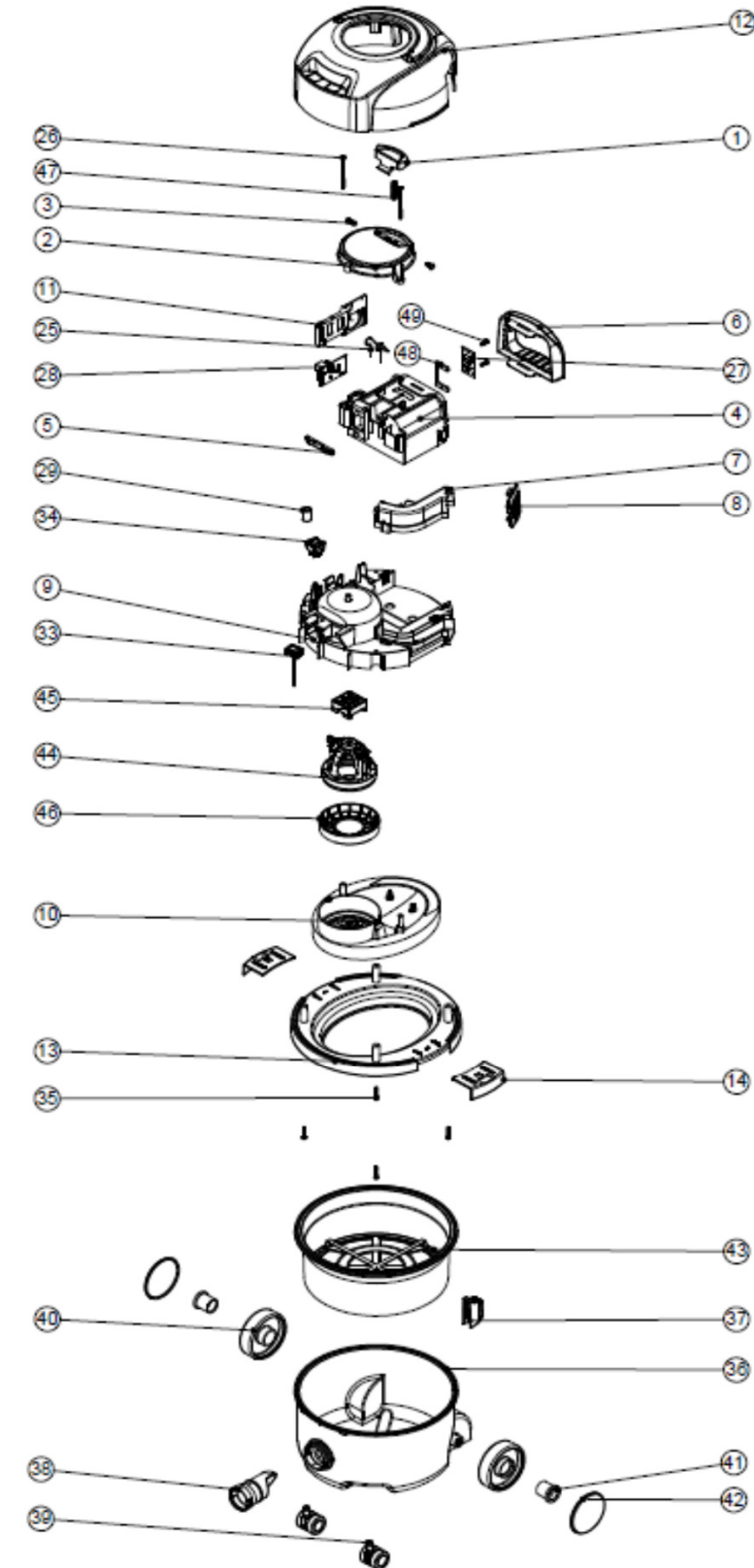
# Numatic International Spare Parts

## Model No: HEAD STYLE 19 EXPLODED DRAWING

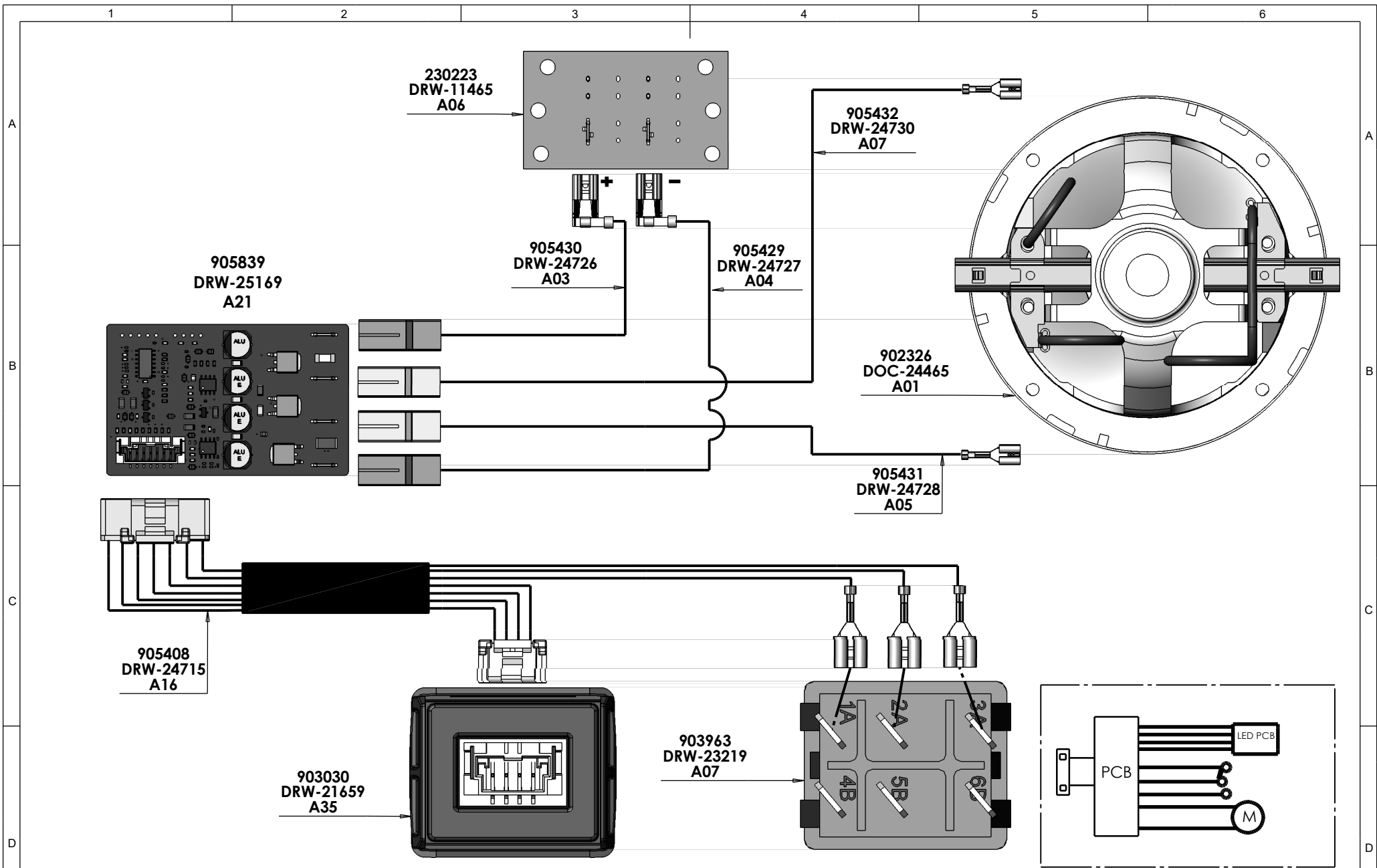
ITEM NO.	PART NUMBER	DESCRIPTION	HEAD STYLE 19 CORDLESS VACUUM (TWO SPEED)/QTY.	COMMENTS:
1	326066	HARD EDGE BOTTOM MOTOR HOUSING PROCESSED FOR NBV BATTERY VAC	1	
2	N/A	HANDLE + COVER BATTERY VACUUM	1	COLOUR/PRINT VARIATION: CONTACT NUMATIC FOR DETAILS
3	237601	BATTERY POD	1	
4	237641	BATTERY RELEASE SPRING RETAINER	1	
5	237602	BATTERY POD FASCIA	1	
6	237600	EXHAUST DUCT	1	
7	237640	EXHAUST AIR DUCT FASCIA	1	
8	237598	MOTOR HOUSING	1	
9	237599	MOTOR ADAPTOR	1	
10	237642	PCB MOUNT & FAN HOUSING	1	
11	237115	NRV HARD EDGE TOGGLE	2	
12	237603	NBV REELER CAP	1	
13	237597	BATTERY RELEASE TOGGLE - HINGE PIN	2	
14	237604	BATTERY RELEASE CATCH	1	
15	237616	MOTOR GASKET	1	
16	237617	MOTOR TOP MOUNT	1	
17	230223	BATTERY VAC CONNECTING PCB	1	
18	903030	LED BATTERY LIFE INDICATOR WITH PCB	1	
19	903963	SWITCH.DPDT.RKR.HV	1	
20	905470	MOTOR CONTROL PCB	1	
21	216655	BATTERY RELEASE SPRING	1	
22	216465	11MM COIL SPRING	1	
23	291049	No8 X 2.95 TX-PN-PLAST SCREW (ZINC PLATED)	2	
24	291152	NO8.1/2 INCH LG.T20.SCREW.Z/PL.PLASTITE	2	
25	291082	#8 SCREW 1"L T20 PAN HEAD P/L THREAD FORMING	4	
26	902326	36V DC 1 STAGE DIRECT AIR FLOW LAMB MOTOR (DL1-36300T) SERIES	1	
27	220844	WHITE CABLE TIES	1	not shown
28	303034	BATTERY RELEASE ACOUSTIC BARRIER	1	CXS BLIZZARD MACHINES ONLY
29	203035	BATTERY VAC COVER ACCOUSTIC BARRIER	1	CXS BLIZZARD MACHINES ONLY
30	237599	FILTER LOCKING CAP	1	CXS BLIZZARD MACHINES ONLY
31	209086	NBV PRE-MOTOR FILTER	1	CXS BLIZZARD MACHINES ONLY
32	203033	NBV MOTOR ACCOUSTIC BARRIER INSTALLED POSITION	2	CXS BLIZZARD MACHINES ONLY



Pos.	Artikel - Nr.	Bezeichnung
1	237604	Batteriehalteclip
2	237603	Abdeckung
3	237597	Schanierstift
4	237601	Batterieaufnahme
5	237641	Federhalter Batterieaufnahme
6	237602	Batterieaufnahme Stirnwand
7	237600	Abluftführung
8	237640	Abdeckgitter
9	237598	oberes Motorgehäuse
10	237599	unteres Motorgehäuse
11	237642	Elektronikhalter & Lüftergehäuse
12	326092	Gehäuseoberteil & Tragegriff
13	326066	Bodenkante Motorgehäuse
14	237115	Verschlußlasche
16	604506	Lithium-Ionen Akku UN3480
25	216655	Ausgabefeder Batterie
26	291049	Schraube 8 x 2.95 Tx
27	230223	Steuerelektronik Batterie
28	208559	Leistungselektronik
29	230097	Ferritrollchen
33	208625	LCD-Modul mit Verbindungskabel
34	220582	Einbauschalter grün (0 - 1)
35	219104	Schraube für Kunststoffe Nr. 8 x 1", verzinkt
36	227487	Behälter Rot
37	237373	Halterung für Parkfunktion am Kessel
38	237119	Saugstutzen, innen
39	204000	Doppelrad 40mm schwarz, steckbar
40	227640	Hinterrad, neue Ausführung für Radkappe
41	227011	Hülse f. Hinterrad
42	227687	Radkappe rot
43	207109	Trockensaugfilter, weiß 305 mm ohne Grid
44	205448	36V DC Saugmotor
45	237617	Motorlagerung
46	237616	Motordichtung
47	216465	Federring 11mm
48	392315	Elektronikhalter
49	219105	Schraube für Kunststoffe Nr. 8 x 5/8", verzinkt







Wire Colours: BK-BLACK, BL-BLUE, BR-BROWN, RD-RED, GR-GREEN, GY-GREEN/YELLOW, OR-ORANGE, SL-SLATE, YL-YELLOW

Qualification of alternative supplier components upon submission of appropriate data sheets and approvals documentation	ASSEMBLY TO BE ROHS COMPLIANT	DIMENSIONS IN MILLIMETERS	TOLERANCES +10 / -5 mm UNLESS OTHERWISE STATED	PRINT SIZE A3 NOT TO SCALE	Class:	Cable Eye Plate: ???	Special Approvals Req:	TITLE: WIRING DIAGRAM.VACUUM.2S.BT.36.1SDAF.300.1.12.IBT	
CHANGE DETAIL:				Internal Code: MS3	Author: Paul Bennett	Date: 13/07/2021	Issue No: 905472	DRG No: DRW-24756	REVISION No: A20.00

This document may be out of date because it has file references that may have been updated. (more...)