

Numatic International Spare Parts

Model No: STEERING COLUMN ASSEMBLY (TRG) EXPLODED DRAWING

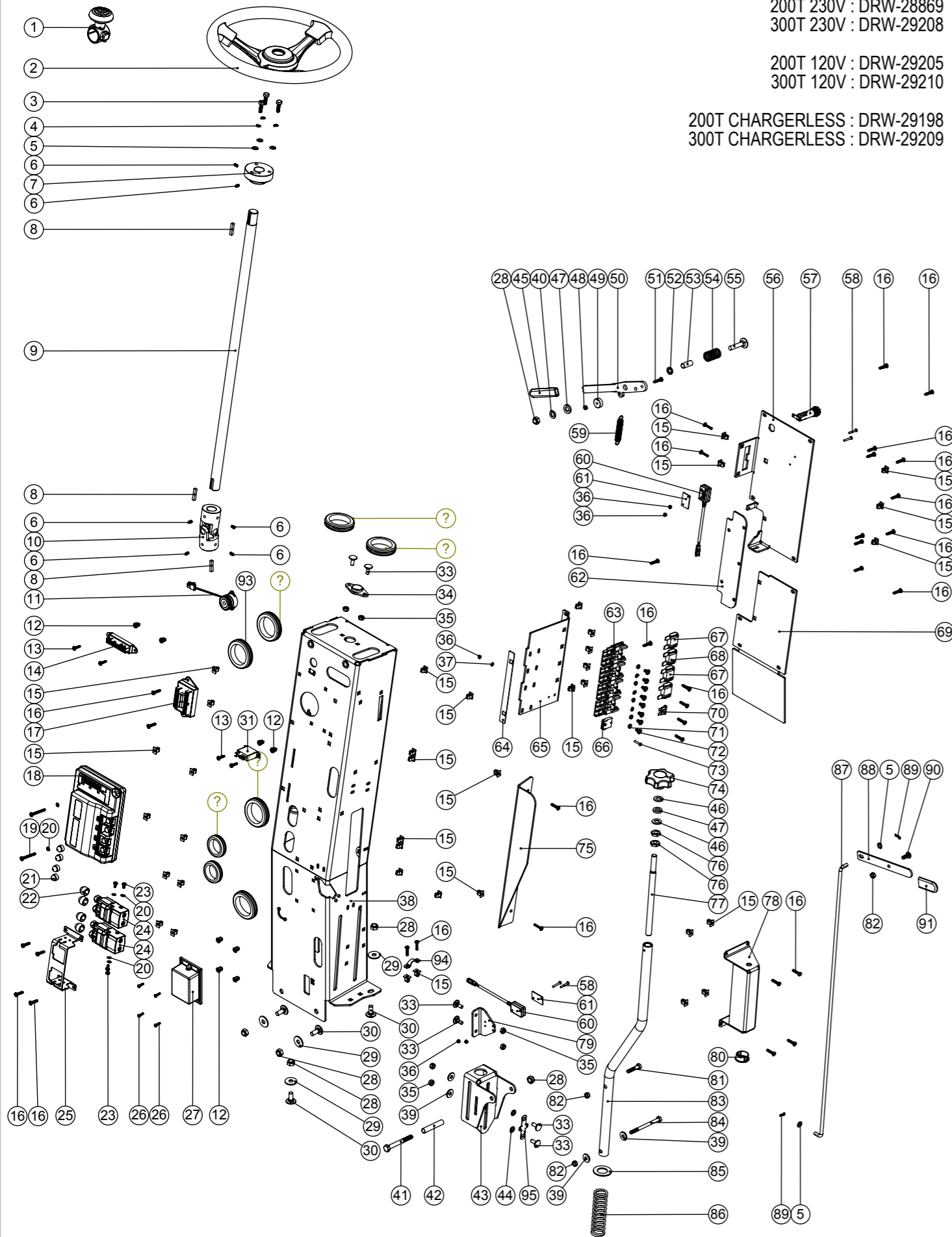
Internal Code: 908989,908975,908974
 DRAWING: DRW-28750 ISS:A11
 MS5 29/03/2019

NB: FOR WIRING SEE DRAWING:

200T 230V : DRW-28869
 300T 230V : DRW-29208

200T 120V : DRW-29205
 300T 120V : DRW-29210

200T CHARGERLESS : DRW-29198
 300T CHARGERLESS : DRW-29209



Numatic International Spare Parts

Model No: STEERING COLUMN ASSEMBLY (TRG) EXPLODED DRAWING

ITEM	PART No:	DESCRIPTION	COMMENTS	QTY.
1	208104	STEERING WHEEL KNOB		1
2	206961	300MM STEERING WHEEL C/W CENTRE CAP		1
3	219976	M6 X 20MM LONG HEXANGONAL HEAD SET SCREW		3
4	219549	M6 SINGLE COIL WASHER		3
5	219560	M6 FORM B STAINLESS STEEL WASHER		5
6	219784	M5 X 8MM LONG BLACKODISED GRUB SCREW		6
7	206960	RIDE-ON STEERING WHEEL ADAPTOR		1
8	905374	UNIVERSAL JOINT KEY	SPARES PART	3
9	206940	STEERING SHAFT		1
10	N/A	UNIVERSAL JOINT		1
11	906671	24V DC BUZZER C/W CONNECTOR		1
12	908769	NYLON GROMMET NUT (PLASTIC INSERT TO SUIT NO 6 PLASTITE SCREW)		8
13	N/A	NO6 X 5/8 INCH LONG POZI-PAN PLASTITE STAINLESS STEEL SCREW		4
14	208909	POTTED TERMINAL BLOCK ASSEMBLY		1
15	900986	NYLON GROMMET NUT (PLASTIC INSERT TO SUIT No 8 PLASTITE SCREW)		39
16	219568	NO8 3/4 INCH LG.POZI-PAN.SCREW.STAINLESS STEEL.PLASTITE		35
17	904179	TERMINAL BLOCK ASSEMBLY		1
18	908113	PROGRAMMED I140 24V DC MOTOR CONTROLLER (TRG)		1
19	219825	NO8 X 1 1/2 INCH LONG POZI PAN STAINLESS STEEL PLASTITE SCREW		2
20	291145	M4 SHAKEPROOF WASHER STAINLESS STEEL		6
21	907916	M6 BOLT AND NUT CAP		4
22	903260	M8 BOLT AND NUT CAP		4
23	219697	M4 X 8MM LONG POZI PAN STAINLESS STEEL SCREW		4
24	903736	24V ALBRIGHT CONTACTOR (SU60-2009)		2
25	908753	CONTACTOR BRACKET (TRG) M/S PAINTED SILVER		1
26	291053	3.5 X 12MM POZI PAN PLASTITE SCREW S/S		4
27	905341	KEMO PWM POWER CONTROL 10A M171		1
28	219639	M8 STAINLESS STEEL NYLON INSERT NUT		6
29	219716	M8 FORM G STAINLESS STEEL WASHER		4
30	291104	M8 X 20 COACH BOLT S/S		4
31	902270	24V RELAY (SPDT NON-LATCHING SURFACE MOUNT)		1
32	208029	GROMMET (32MM I/D)		2
33	291103	M6 X 16 COACH BOLT S/S		6
34	208110	IGUS (R) 2 BOLT PLAIN BEARING 20MM I/D		1
35	219642	M6 STAINLESS STEEL NYLON INSERT NUT		6
36	291154	M3 NYLON INSERT NUT STAINLESS STEEL		5
37	904219	M3 STAINLESS STEEL EXTERNAL SHAKEPROOF WASHER		1
38	908783	STEERING COLUMN WELD ASSEMBLY (TRG) M/S PAINTED SILVER		1
39	219647	M6 FORM G STAINLESS STEEL WASHER		4
40	219578	M8 FORM A STAINLESS STEEL WASHER		1
41	902517	M8 X 70MM LONG HEX BOLT STAINLESS STEEL		1
42	391199	54MM LONG X 10MM DIAMETER STAINLESS STEEL TUBE		1
43	908772	BRUSH PRESSURE ADJUSTMENT SLIDE (TRG) S/S		1
44	219493	M6 NYLON WASHER		2
45	903870	LEVER HANDLE MOULDING RED		1
46	219903	M10 FORM A STAINLESS STEEL WASHER		2
47	219964	NYLON WASHER (18MM O/D X 10.4MM I/D X 3MM THICK)		2
48	219687	M4 STAINLESS STEEL NYLON INSERT NUT		1
49	208382	MAGNET (19MM O/D)		1
50	908815	FLOOR TOOL LIFTING HANDLE (TRG) S/S		1
51	219686	M4 X 20MM LONG STAINLESS STEEL POZI PAN MACHINE SCREW		1
52	906640	CARRIAGE BOLT SPACER		1
53	391191	LEVER PIVOT SPACER (S/S 10MM O/D 8MM I/D X 24MM LONG)		1
54	219592	COMPRESSION SPRING		1
55	291120	M8 X 40 CARRIAGE BOLT S/S		1
56	909605	LEVER PIVOT/SELECTOR PLATE (TRG) Z/PL		1
57	903032	BULGIN PANEL MOUNT FUSEHOLDER		1
58	291155	M3 X 20MM LONG POZI PAN SCREW STAINLESS STEEL		4
59	206777	EXTENSION SPRING 65.3MM LONG		1
60	904501	REED SWITCH ASSEMBLY		2
61	906617	REED SWITCH WASHER PLATE		2
62	908781	FUSE PANEL VIEWING WINDOW (TRG) CLEAR PLEXIGLASS		1
63	230102	FUSE HOLDER RATED AT 60 AMPS	2 USED ON 720 / 4 USED ON 678	4
64	908747	SYMBOL BACKPLATE RED P/P		1
65	908779	FUSE HOLDER PLATE (TRG) M/S PAINTED SILVER		1
66	906564	ATO FUSE HOLDER (FKH SERIES)		1
67	221091	20 AMP MAXI FUSE	1 USED ON 720 / 0 USED ON 678	1
68	230104	30 AMP MAXI FUSE	1 USED ON 720 / 4 USED ON 678	1
69	908777	STEERING COLUMN COVER (TRG) M/S PAINTED SILVER		1
70	905570	4 AMP FUSE		1
71	219861	M5 SINGLE COIL STAINLESS STEEL WASHER		8
72	219864	M5 X 8MM LONG POZI-PAN SCREW Z/PL		8
73	902065	M3 X 16MM LONG POZI PAN SCREW STAINLESS STEEL		1
74	903281	M10 LOBE KNOB (RED)		1
75	329888	STEERING COLUMN SPLASH GAURD		1
76	219951	A4 (STAINLESS STEEL) M10 HEX LOCK NUT (HALF NUT)		2
77	905445	TRAPEZOIDAL THREADED S/S BAR TR12X6 - P3		1
78	329863	BRUSH PRESSURE ADJUSTMENT BRACKET		1
79	908780	REED SWITCH BRACKET (TRG) PAINTED SILVER		1
80	208021	19MM (3/4 INCH) SNAP BUSHING		1
81	291022	M6 X 30MM LONG STAINLESS STEEL HEXAGONAL HEAD BOLT		1
82	219983	M6 NYLOC STAINLESS STEEL FULL NUT		3
83	908824	BRUSH PRESSURE ADJUSTMENT TUBE WELD ASSY (TRG) S/S		1
84	219915	M6 X 80MM LONG STAINLESS STEEL HEXAGONAL HEAD BOLT		1
85	291162	M20 FORM B STAINLESS STEEL WASHER		1
86	208016	MANUAL BRUSH DECK ADJUSTMENT SPRING		1
87	391195	PEDAL LATCH RELEASE ROD		1
88	329850	RELEASE HANDLE		1
89	904923	MINI R-CLIP STAINLESS STEEL		2
90	219646	M6 X 16MM LONG POZI PAN STAINLESS STEEL SCREW		1
91	904191	50MM LONG DIP MOULDED HANDLE COVER (RED)		1
92	220007	BLACK CABLE TIE		17
93	220235	FLOAT GROMMET		6
94	909603	CABLE CLAMP PP		1
95	909601	CABLE CLAMP PP RED		1