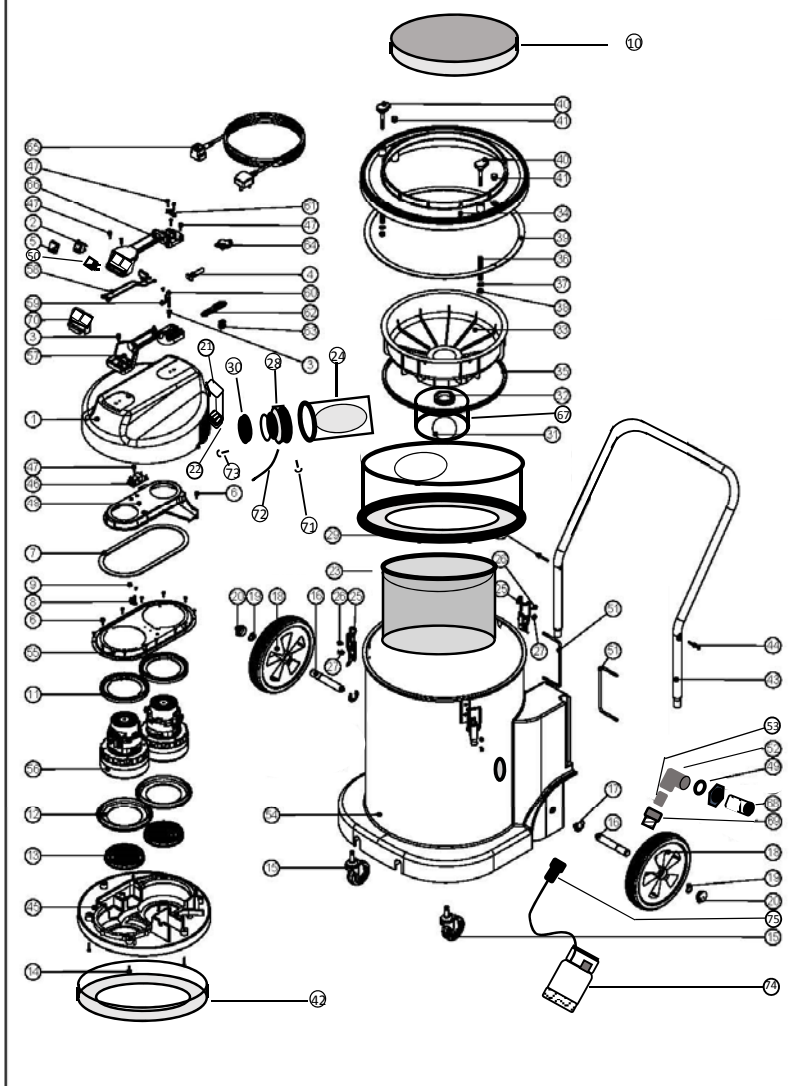


SSIVD 1800 AP Exploded Drawing

Drawn by: P Simpson
2016 model



1	301092	COVER MOULDING BLACK + INSERTS DOUBLE GRILL (drilled)
2	220843	BLUE ROCKER SWITCH (WHITE PRINT)
3	219546	M5.20MM LG.POZI-PAN.SCREW Z/PL SEM
4	220132	STRESS RELIEF
5	206573	SWITCH COVER (PLUG HANDLE)
6	219370	NO8.5/8 LG.POZI-PAN.SCREW S/STEEL PLASTITE
7	202012	GASKET
8	220532	THERMOSTAT 0-287
9	219491	M3.5MM LG.POZI-PAN.SCREW Z/PL TAPTITE
10	207124	CARTRIDGE FILTER
11	227925	TOP MOTOR GASKET (LAMB BYPASS MOTOR)
12	202005	MOTOR BOTTOM GASKET
13	206010	FAN GUARD
14	291094	TX-PN PLASTITE 48/2 STAINLESS STEEL LONG SCREW
15	204060	3 inch CASTOR W 13696-G-X2-RP GREY
16	206452	STUB AXLE
17	219306	E CLIP RSM/19
18	204028	10 WHEEL 20MM BORE
19	219308	CIRCLIP A20
20	206131	PLASTIC CAP BLACK 804029
21	206511	SOCKET COVER
22	229018	POWER TAKE OFF SOCKET
23	000019	SWARF BASKET (complete)
24	206171	76MM CYCLONIC ENTRY
25	206135	TOGGLE FASTENER
26	219047	M5.10MM LG.POZI-PAN.SCREW Z/PL SEM
27	219330	M5.12MM LG.POZI-PAN.SCREW Z/PL C/SUNK
28	206188	THREADED REDUCER CONNECTOR
29	500610	BAGGER ASSEMBLY
30	206363	END CAP
31	206026	WV375/575/2000 POLYPROP BALL
32	220235	FLOAT GROMMET
33	225101	FLOAT MOULDING
34	226021	BOTTOM PLATE MOULDING
35	202036	FLOAT MOULD EXTRUSION SEAL
36	219418	COMPRESSION SPRING
37	219010	M8 FORM A WASHER
38	219078	M8 NYLON INSERT NUT
39	212024	INSEAL
40	206242	HOOKEED KNOB
41	206243	RIBBED TUBE INSERT
42	237610	14" WET BOTTOM MOTOR HOUSING ADAPTOR
43	402100	BLACK HANDLE
44	219316	No 10 x 43MM LONG POZI PAN COUNTERSUNK SCREW
45	301048	BOTTOM MOTOR HOUSING
46	906039	230V DELAY START MODULE
47	219107	No6 x 5/8 INCH LONG POZI PAN PLASTITE SCREW
48	227928	570 AIR SEPERATOR (AMETEK BYPASS MOTOR DUPLEX)
49	229115	SEALING WASHER
50	220582	GREEN ROCKER SWITCH
51	302098	HOSE BRACKET
52	206547	ELBOW 1 1/2 "
53	391180	TUBE CUT TO LENGTH
54	227371	1800 BLUE MOULDED DRUM (no fittings)
55	225168	DUPLEX TOP MOTOR HOUSING
56	205411	230V 2 STAGE D.I BYPASS ACUSTEK MOTOR (BL21104)
57	227628	HANDLE BASE MOULDING
58	220558	SUPPRESSOR ASSY (1.5MM)
59	206562	CONTACT PIN
60	219090	M4 x 8MM LONG POZI-PAN SEMS SCREW Z/PL
61	216290	CABLE CLAMP 16A
62	227636	STRAIN RELIEF ARM (SOCKET)
63	227637	CABLE CLIP (SOCKET)
64	227632	TERMINAL COVER AND CLAMP 2PIN
65	236011	10.0MT X 1.5MM X 3 CORE CABLE (SOCKET + PLUG) UK
66	904830	HANDLE COVER 16AMP 3PIN 2 SWITCH
67	403014	ZINC PLATED FLOAT GAGE
68	303547	1 1/2" CONNECTOR MODIFIED C/W 2 X DRUM CONNECTOR NUT
69	320897	1 1/4" HEXAGON THREADED FOR EBARA PUMP
70	227629	SWITCH MOUNTING BRACKET 2 SWITCHES
71	219101	NO8.1/2 INCH LG. POZI-PAN SCREW
72	303121	FIXING WIRE
73	219212	M3.5X10MM SCREW
74	225500	SUBMERSIBLE PUMP
75	220133	STRAIGHT 3 PIN PLUG