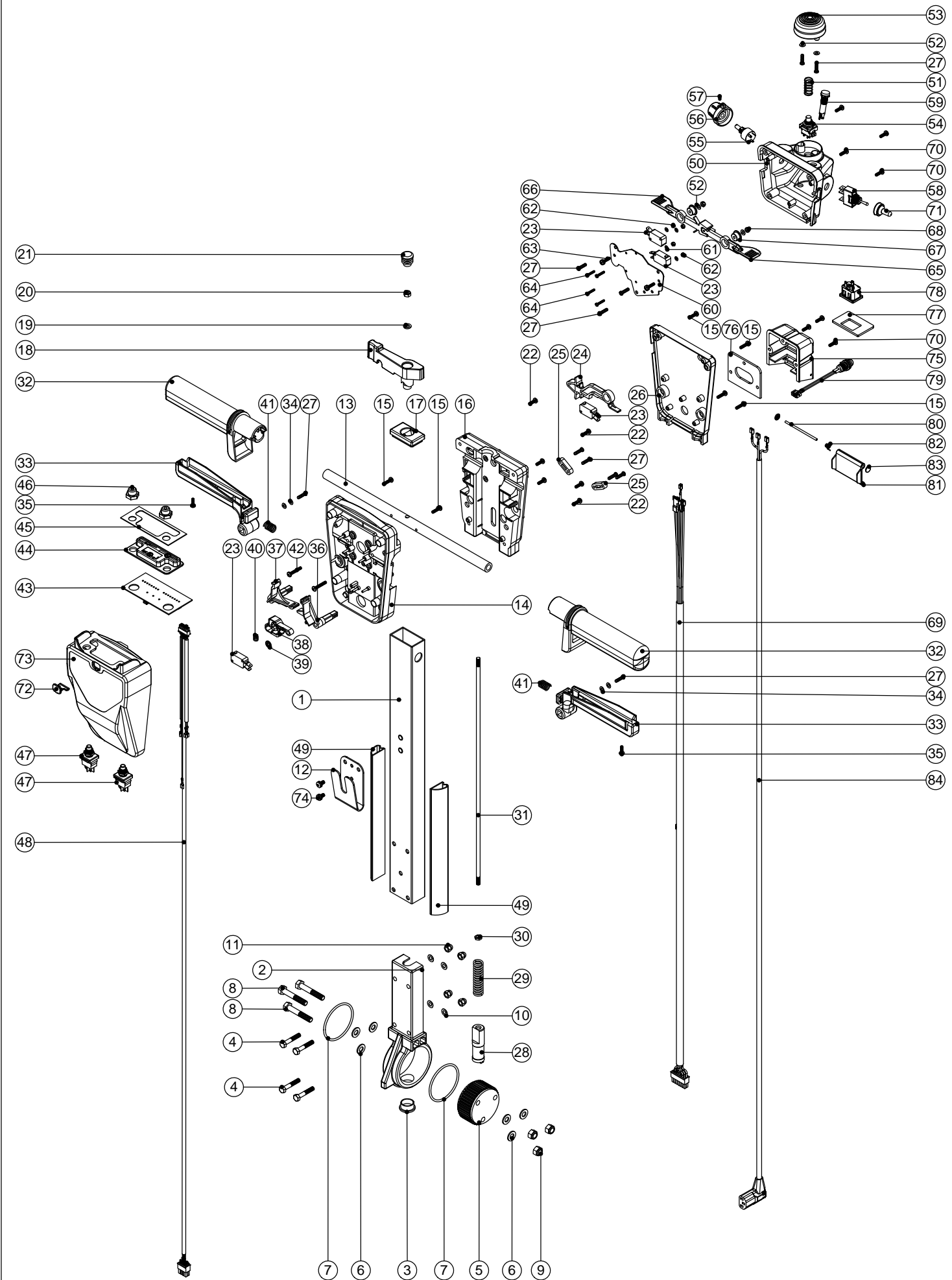


Numatic International Spare Parts

Model No: TTB4500/100ST / TTB4552/100ST Handle Assembly

234527
DRAWING: EXP-0956 ISS:A03
08/04/2008

NB: FOR WIRING SEE DRAWING: WD-0354 & WD-0356



Numatic International Spare Parts

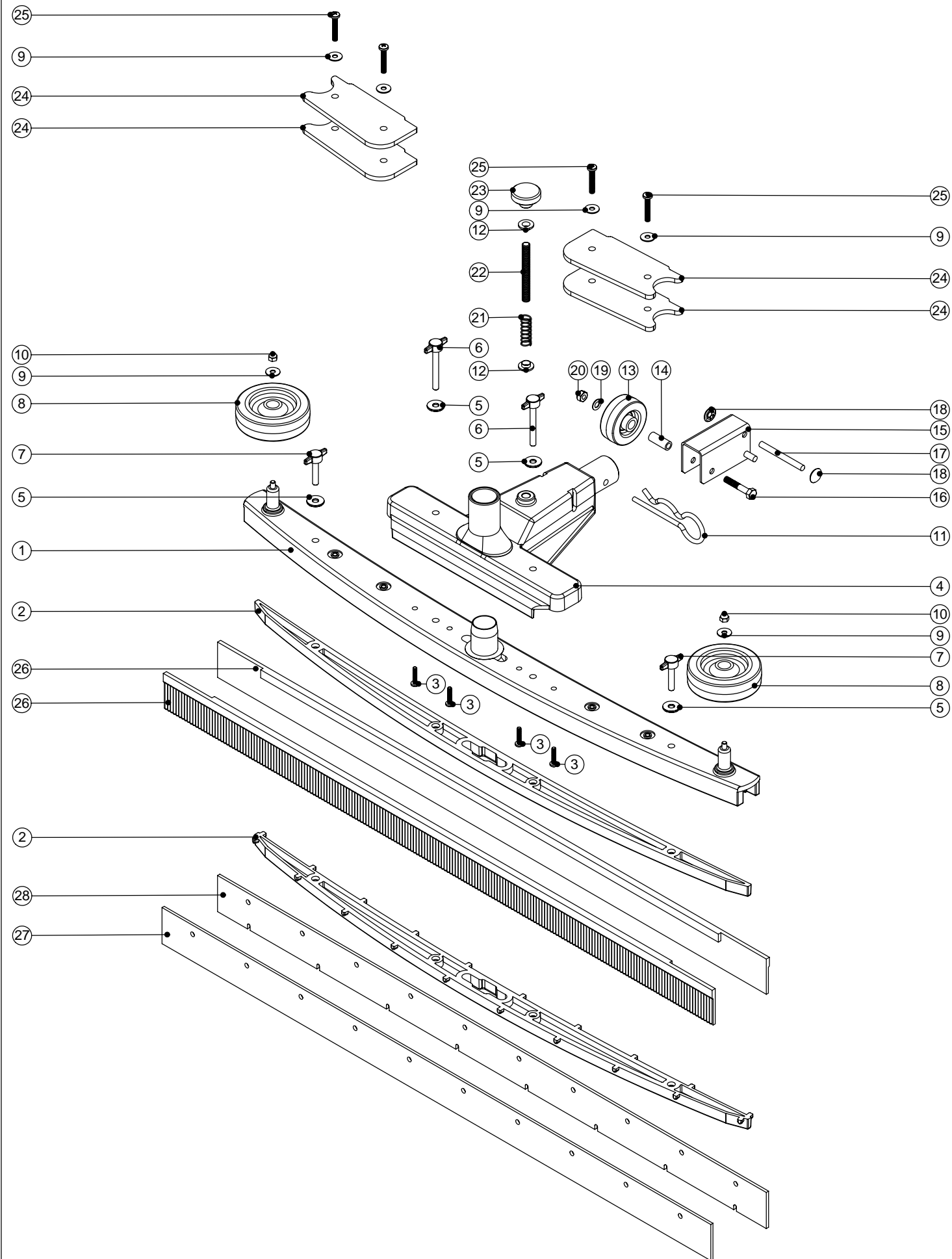
Model No: TTB4500/100ST / TTB4552/100ST Handle Assembly

| POS: | ITEM NO: | DESCRIPTION: | COMMENTS: |
|------|----------|---|--------------------------|
| 1 | 429074 | 430MM PAINTED PROCESSED ALUMINIUM HANDLE | |
| 2 | 229081 | HANDLE CASTING MACHINED | |
| 3 | 229099 | 25MM DIA HOLE PLUG | |
| 4 | 219064 | M6 X 35MM LONG HEX BOLT | |
| 5 | 229074 | ADJUSTMENT GEAR | |
| 6 | 219010 | M8 FORM A WASHER | |
| 7 | 219254 | O RING 3MM DIA X 60MM I/D | |
| 8 | 219091 | M8 X 50MM LONG HEX BOLT | |
| 9 | 219078 | M8 NYLON INSERT NUT | |
| 10 | 219007 | M6 FORM B WASHER | |
| 11 | 219080 | M6 DOMENUT | |
| 12 | 329397 | SEPARATOR HANGING BRACKET | |
| 13 | 338269 | CROSS TUBE | |
| 14 | 227576 | FRONT INNER HALF MOULDING | |
| | 229508 | FRONT INNER HALF MOULDING | |
| 15 | 219105 | No8 X 5/8 INCH LONG POZI PAN PLASTITE SCREW | CSA 120V FLAME RETARDENT |
| 16 | 227577 | REAR INNER HALF MOULDING | |
| | 229509 | REAR INNER HALF MOULDING | |
| 17 | 227582 | HANDLE PLUG MOULDING | CSA 120V FLAME RETARDENT |
| 18 | 227583 | ADJUSTMENT LEVER MOULDING | |
| 19 | 219493 | M6 NYLON WASHER | |
| 20 | 219642 | M6 NYLON INSERT STAINLESS STEEL HALF NUT | |
| 21 | 20638V | CSP-302 BLACK TUBE END STOP | |
| 22 | 219101 | No8 X 1/2 INCH LONG POZI PAN PLASTITE SCREW | |
| 23 | 229483 | SNAP ACTION SWITCH | |
| 24 | 227584 | INTERLOCK LEVER MOULDING | |
| 25 | 227008 | BLACK CABLE CLAMP | |
| 26 | 303776 | PROCESSED TRACTION DRIVE REAR HANDLE COVER (C/W HOLE) | |
| | 303777 | PROCESSED TRACTION DRIVE REAR HANDLE COVER (C/W HOLE) | |
| 27 | 219107 | No6 X 5/8 INCH LONG POZI PAN PLASTITE SCREW | CSA 120V FLAME RETARDENT |
| 28 | 229073 | GEAR LOCKING PIN | |
| 29 | 229138 | SPRING | |
| 30 | 219099 | M6 HALF NUT | |
| 31 | 229461 | 440MM HANDLE LOCKING ROD | |
| 32 | 227580 | HAND GRIP MOULDING | |
| 33 | 229500 | TRIGGER MOULDING BLUE | |
| 34 | 219206 | M4 FORM A WASHER | |
| 35 | 219270 | No8 X 1/2 INCH LONG POZI PAN SELF TAP SCREW | |
| 36 | 227585 | LEFT HAND SWITCH OPERATING LEVER MOULDING | |
| 37 | 227586 | RIGHT HAND SWITCH OPERATING LEVER MOULDING | |
| 38 | 227587 | CENTRE SWITCH OPERATING LEVER MOULDING | |
| 39 | 219805 | 4MM SPIREFIX | |
| 40 | 219804 | SWITCH COMPRESSION SPRING | |
| 41 | 219803 | TRIGGER COMPRESSION SPRING | |
| 42 | 219811 | NO8 X 1 INCH LONG POZI-PAN SELF TAP SCREW | |
| 43 | 206880 | TTB LED/SWITCH PANEL C/W USB CONNECTION | |
| 44 | 206646 | LENS MOULDING | |
| 45 | 220725 | SELF ADHESIVE LENS GASKET | |
| 46 | 220600 | SWITCH COVER | |
| 47 | 220597 | PUSH BUTTON SWITCH | |
| 48 | 236066 | HANDLE HARNESS | |
| 49 | 391074 | 244MM LONG CUT SELF ADHESIVE CABLE DUCTING | |
| 50 | 229670 | TRACTION CONTROL BOX MOULDING | |
| 51 | 219816 | COMPRESSION SPRING | |
| 52 | 219688 | M4 FORM A STAINLESS STEEL WASHER | |
| 53 | 227683 | EMERGENCY STOP BUTTUN | |
| 54 | 270295 | PUSH BUTTON SWITCH | |
| 55 | 270294 | POTENTIOMETER | |
| 56 | 329363 | SPEED ADJUSTMENT KNOB C/W INSERT | |
| 57 | 219744 | M4 X 6MM LONG BLACKODISED GRUB SCREW | |
| 58 | 206786 | SWITCH | |
| 59 | 270291 | GREEN LED INDICATOR 2V C/W 2.2K RESISTOR | |
| 60 | 329298 | DIRECTION TRIGGER MOUNTING PLATE | |
| 61 | 219501 | M3 FORM A STAINLESS STEEL WASHER | |
| 62 | 219070 | M3 NYLON INSERT NUT | |
| 63 | 219472 | M4 X 16MM LONG POZI PAN SEMS SCREW | |
| 64 | 219500 | M3 X 16MM LONG STAINLESS STEEL SLOT SCREW | |
| 65 | 227684 | LEFT HAND DIRECTION TRIGGER | |
| 66 | 227685 | RIGHT HAND DIRECTION TRIGGER | |
| 67 | 206579 | SHOULDERED SPACER | |
| 68 | 219687 | M4 NYLON INSERT STAINLESS STEEL NUT | |
| 69 | 206878 | TRACTION HARNESS | |
| 70 | 219601 | No8 X 3/8 INCH LONG POZI PAN PLASTITE SCREW | |
| 71 | 206785 | SWITCH COVER C/W NUT | |
| 72 | 229743 | USB PLUG MOULDING | |
| 73 | 229760 | FRONT COVER MOULDING C/W USB PLUG HOLE | |
| | 229761 | FRONT COVER MOULDING C/W USB PLUG HOLE | |
| 74 | 219047 | M5 X 10MM LONG POZI PAN SEMS SCREW | CSA 120V FLAME RETARDENT |
| 75 | 329355 | PROCESSED SOCKET COVER MOULDING WITH LARGE HOLE | |
| | 303629 | PROCESSED SOCKET COVER MOULDING WITH LARGE HOLE | |
| 76 | 202105 | SOCKET COVER SEALING GASKET | CSA 120V FLAME RETARDENT |
| 77 | 329297 | SOCKET MOUNTING PLATE | |
| 78 | 220391 | 3 PIN APPLIANCE SOCKET | |
| 79 | 270193 | NEON INDICATOR RED LENS 230V C/W LINK WIRES | |
| | 270195 | NEON INDICATOR RED LENS 120V C/W LINK WIRES | |
| 80 | 390979 | 72MM LONG X 3MM DIAMETER STAINLESS STEEL BAR | |
| 81 | 227781 | FLAP MOULDING | |
| 82 | 219819 | TORSION SPRING | |
| 83 | 219832 | 3MM DIAMETER STARLOCK | |
| 84 | 321344 | AC CHARGING LEAD ASSEMBLY | |
| | 321345 | CSA AC CHARGING LEAD ASSEMBLY | |

Numatic International Spare Parts

Model No: Semi Parabolic Floor Tool (TTA-90/91/92/93B)

234108
DRAWING: EXP-0539 ISS:A09
06/06/2007



Numatic International Spare Parts

Model No: Semi Parabolic Floor Tool (TAA-90/91/92/93B)

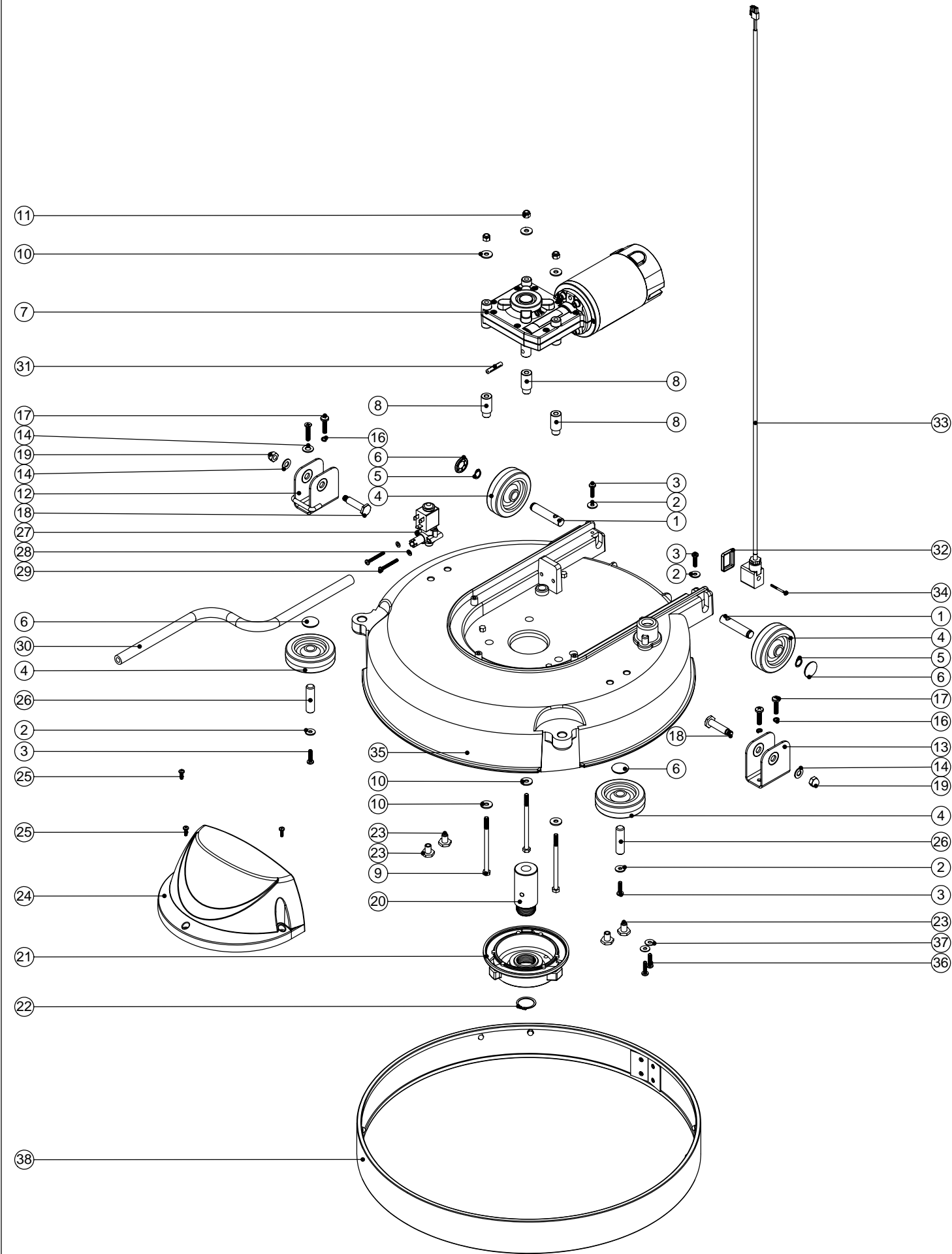
| POS: | ITEM NO: | DESCRIPTION: | COMMENTS: |
|------|----------|---|---|
| 1 | 229403 | TOP MOULDING | TLB-345S / TT-345 / TTB-345 / TT-3450 / TTB-3450 |
| | 229404 | TOP MOULDING | TT-455 / TTB-455 / TT-4500 / TTB-4500/TTB-450/100ST |
| 2 | 229401 | BOTTOM MOULDING | TLB-345S / TT-345 / TTB-345 / TT-3450 / TTB-3450 |
| | 229402 | BOTTOM MOULDING | TT-455 / TTB-455 / TT-4500 / TTB-4500 |
| | 229475 | BOTTOM MOULDING (WITH LUGS) | TLB-345S / TT-345 / TTB-345 / TT-3450 / TTB-3450 |
| | 229476 | BOTTOM MOULDING (WITH LUGS) | TT-455 / TTB-455 / TT-4500 / TTB-4500/TTB-450/100ST |
| 3 | 219568 | No8 X 3/4 INCH LONG POZI PAN STAINLESS STEEL SCREW | |
| 4 | 301193 | CENTRE MOULDING PLUS INSERT DRILLED | |
| 5 | 219647 | M6 FORM G STAINLESS STEEL WASHER | |
| 6 | 301195 | M6 X 50MM TEE KNOB ASSEMBLY | |
| 7 | 301194 | M6 X 30MM TEE KNOB ASSEMBLY | |
| 8 | 204068 | 3 INCH GREY WHEEL | |
| 9 | 219644 | M5 FORM G STAINLESS STEEL WASHER | |
| 10 | 219645 | M5 STAINLESS STEEL DOME NUT | |
| 11 | 229295 | RETAINING PIN | |
| 12 | 219417 | UNIFIED M/C SCREW INSULATOR | |
| 13 | 215006 | 2" FLO WHEEL BLACK (GREY TYRE) | |
| 14 | 204023 | 24MM FLO WHEEL INSERT | |
| 15 | 329673 | HEIGHT ADJUSTOR BRACKET WELDED ASSEMBLY | |
| 16 | 219064 | M6 X 35MM LONG HEX BOLT | |
| 17 | 390401 | 6MM DIA X 60MM LONG STAINLESS STEEL BAR | |
| 18 | 219402 | 6MM STAINLESS STARLOCK WASHER + CAP | |
| 19 | 219007 | M6 FORM B WASHER | |
| 20 | 219642 | M6 STAINLESS STEEL NYLON INSERT NUT | |
| 21 | 219312 | COMPRESSION SPRING | |
| 22 | 229283 | HEIGHT ADJUSTMENT SHAFT | |
| 23 | 215008 | ADJUSTING KNOB | |
| 24 | 429067 | WEIGHT (PAINTED SILVER GREY) | TLB-345S / TTB-345/TTB-455/TTB-3450/TTB-4500 |
| 25 | 219720 | M5 X 30MM LONG STAINLESS STEEL POZI PAN SCREW | TLB-345S / TTB-345/TTB-455/TTB-3450/TTB-4500 |
| | 217224 | 850MM LONG FIXED FLOOR TOOL (FRONT & REAR) RUBBER BLADE | TT-455 / TTB-455 / TT-4500 / TTB-4500 |
| 26 | 217349 | 790MM LONG FIXED FLOOR TOOL (FRONT & REAR) RUBBER BLADE | TLB-345S / TT-345 / TTB-345 / TT-3450 / TTB-3450 |
| | 217289 | 850MM LONG FIXED FLOOR TOOL POLYURETHANE BACK BLADE | TT-455 / TTB-455 / TT-4500 / TTB-4500 |
| 27 | 217287 | 790MM LONG FIXED FLOOR TOOL POLYURETHANE BACK BLADE | TLB-345S / TT-345 / TTB-345 / TT-3450 / TTB-3450/TTB-4500/100ST |
| | 217288 | 850MM LONG FIXED FLOOR TOOL POLYURETHANE FRONT BLADE | TT-455 / TTB-455 / TT-4500 / TTB-4500 |
| 28 | 217286 | 790MM LONG FIXED FLOOR TOOL POLYURETHANE FRONT BLADE | TLB-345S / TT-345 / TTB-345 / TT-3450 / TTB-3450/TTB-4500/100ST |

Numatic International Spare Parts

Model No:TTB4500/100ST Base Assembly

234529
DRAWING: EXP-0958 ISS:A01
01/06/2007

NB: FOR WIRING SEE DRAWING: WD-0354 & WD-0356



Numatic International Spare Parts

Model No:TTB4500/100ST Base Assembly

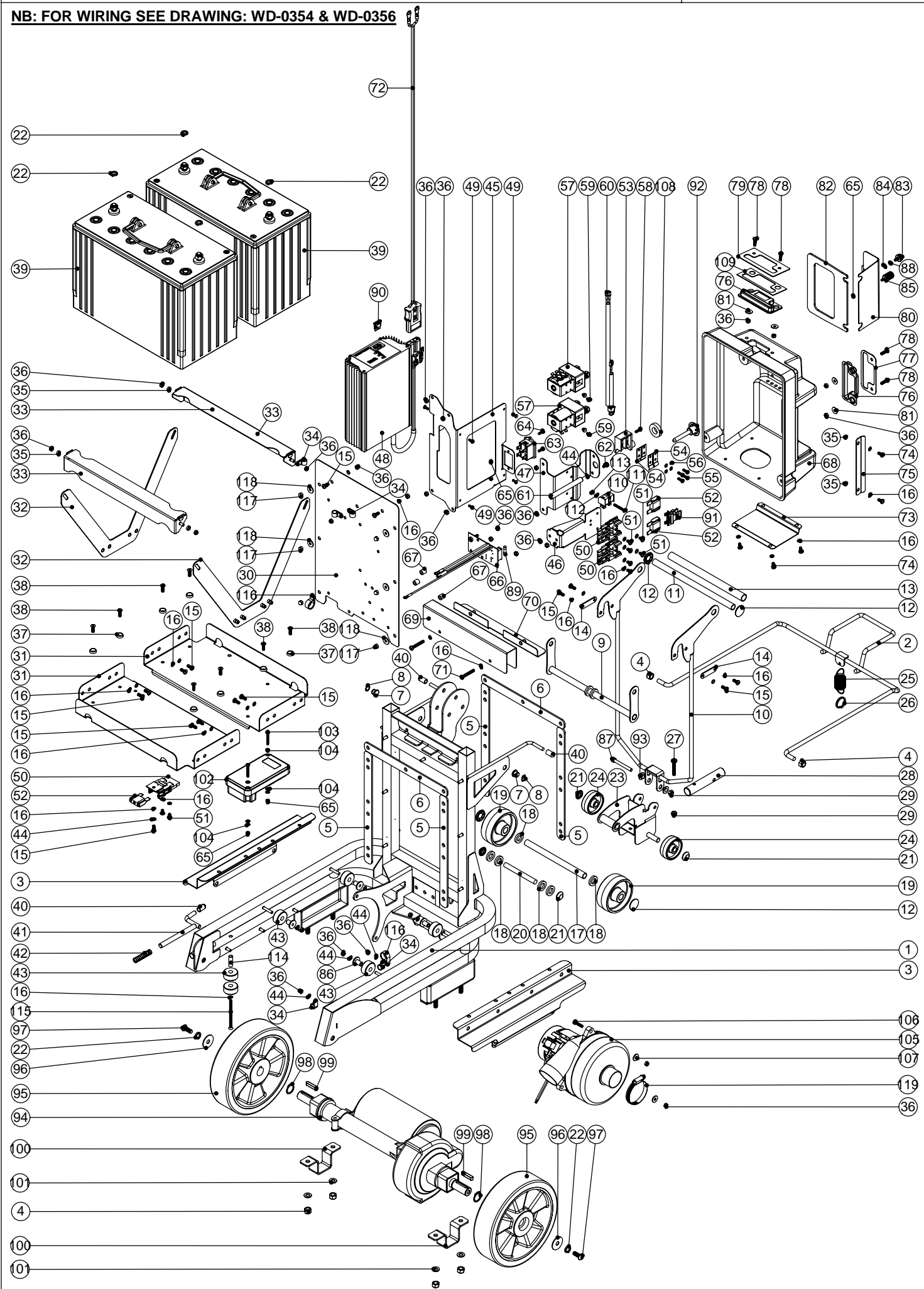
| POS: | ITEM NO: | DESCRIPTION: | COMMENTS: |
|------|----------|---|-----------|
| 1 | 229382 | REAR WHEEL PIN | |
| 2 | 219005 | M5 FORM G WASHER | |
| 3 | 219546 | M5 X 20MM LONG POZI PAN SEMS SCREW | |
| 4 | 204068 | 3 INCH GREY WHEEL | |
| 5 | 219345 | 12MM EXTERNAL CIRCLIP | |
| 6 | 204021 | 12.7MM STAINLESS STEEL HUB CAP | |
| 7 | 205109 | 24V DC PM MOTOR / GEARBOX | |
| 8 | 229200 | MOTOR MOUNTING SPACER | |
| 9 | 219863 | M6 X 100MM LONG HEXAGONAL HEAD BOLT | |
| 10 | 219008 | M6 FORM G WASHER | |
| 11 | 219088 | M6 NYLON INSERT NUT | |
| 12 | 404041 | PIVOT BRACKET WELDED ASSEMBLY | |
| 13 | 403210 | NON LOCKING PIVOT BRACKET | |
| 14 | 219010 | M8 FORM A WASHER | |
| 15 | 219506 | M6 X 25MM LONG POZI PAN COUNTERSUNK SCREW | |
| 16 | 219549 | M6 SINGLE COIL WASHER | |
| 17 | 219056 | M6 X 25MM LONG POZI PAN SCREW | |
| 18 | 206236 | PIVOT PIN | |
| 19 | 219077 | M8 DOMENUT | |
| 20 | 229201 | DRIVE SHAFT | |
| 21 | 230207 | CHUCK | |
| 22 | 230048 | 26MM EXTERNAL CIRCLIP | |
| 23 | 219606 | BRACKET SPACER | |
| 24 | 229499 | MOTOR COVER BATTERY | |
| 25 | 219569 | No8 X 1/2 INCH LONG POZI PAN STAINLESS STEEL PLASTITE SCREW | |
| 26 | 206013 | BUFFER WHEEL PIN | |
| 27 | 220379 | 24V D.C. SOLENOID VALVE | |
| 28 | 219206 | M4 FORM A WASHER | |
| 29 | 219703 | M4 X 35MM LONG STAINLESS STEEL POZI PAN SCREW | |
| 30 | 303248 | 900MM LONG SILICON TUBE | |
| 31 | 219523 | GROOVED PIN | |
| 32 | 202081 | REPLACEMENT MPM CONNECTOR GASKET | |
| 33 | 236096 | SOLENOID LEAD ASSEMBLY | |
| 34 | 219251 | REPLACEMENT MPM CONNECTOR M3 SCREW | |
| 35 | 329459 | INSERTED GREY BASE MOULDING ASSEMBLY | |
| 36 | 219571 | M5 X 20MM LONG POZI PAN STAINLESS STEEL SCREW | |
| 37 | 219644 | M5 FORM G STAINLESS STEEL WASHER | |
| 38 | 304227 | SPLASH SKIRT ASSEMBLY | |

Numatic International Spare Parts

Model No:TTB4500/100ST Electrical/Chassis Assembly

234528
DRAWING: EXP-0957 ISS:A03
10/10/2007

NB: FOR WIRING SEE DRAWING: WD-0354 & WD-0356



Numatic International Spare Parts

Model No:TTB4500/100ST Electrical/Chassis Assembly

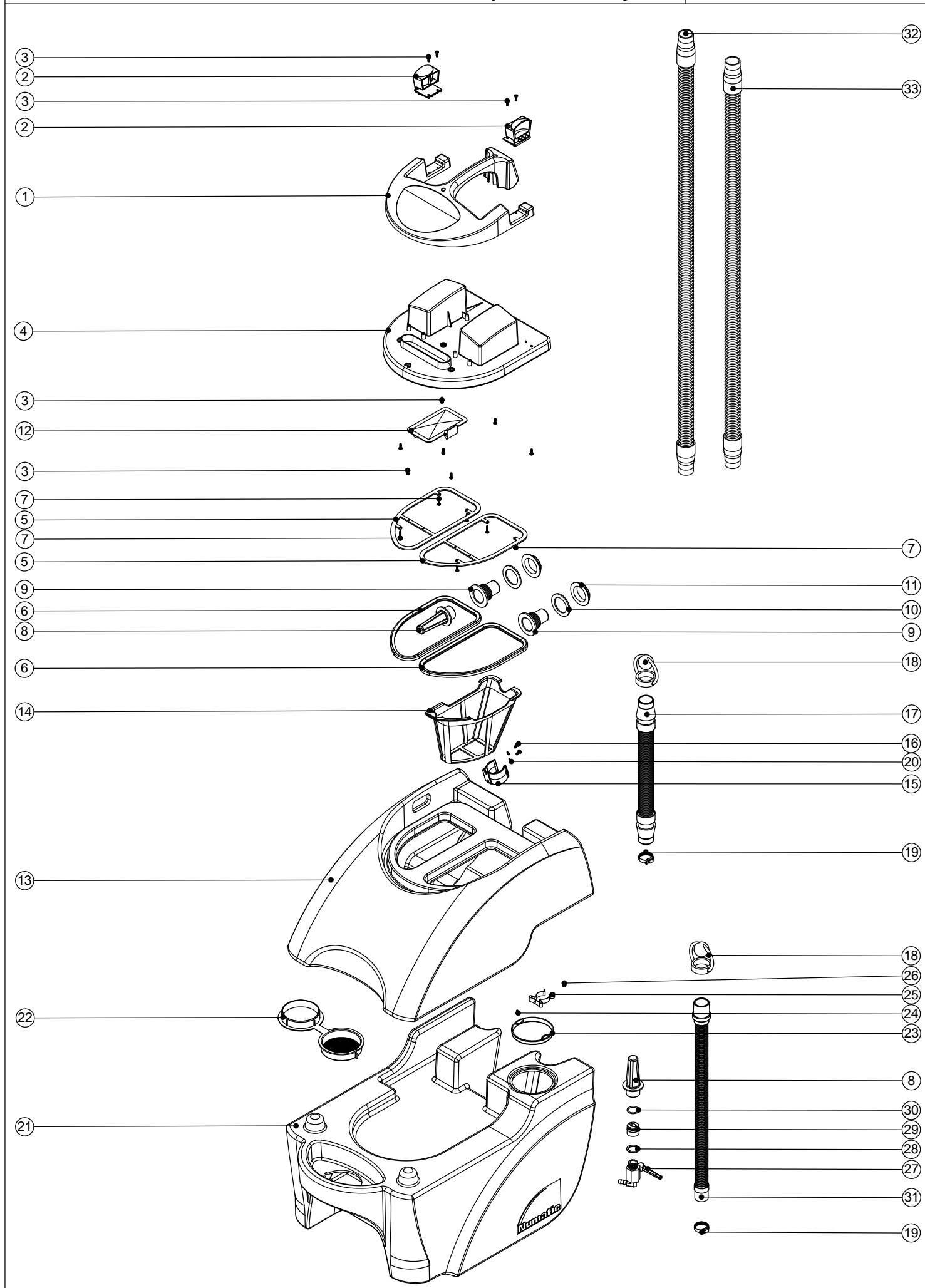
| POS: | ITEM NO: | DESCRIPTION: | COMMENTS: |
|------|----------|---|-----------|
| 1 | 329791 | NUTSERTED WELDED CHASSIS ASSEMBLY | |
| 2 | 303620 | BATTERY ADJUSTMENT HANDLE W/A | |
| 3 | 329416 | BATTERY SLIDER BRACKET | |
| 4 | 219639 | M8 STAINLESS STEEL NYLON INSERT NUT | |
| 5 | 202112 | CHASSIS GASKET - VERTICAL | |
| 6 | 202113 | CHASSIS GASKET - HORIZONTAL | |
| 7 | 206647 | PIVOT BUSH | |
| 8 | 219586 | 10MM EXTERNAL CIRCLIP | |
| 9 | 303594 | FLOOR TOOL PIVOT LINK ASSEMBLY | |
| 10 | 303595 | FLOOR TOOL LIFTING FRAME | |
| 11 | 391037 | 235MM LONG X 1/2 INCH DIAMETER X 18G STAINLESS STEEL TUBE | |
| 12 | 204021 | 12.7MM STAINLESS STEEL HUB CAP | |
| 13 | 391038 | 218MM LONG BLACK NYLON TUBE | |
| 14 | 329395 | FIXING BRACKET | |
| 15 | 219740 | M5 X 12MM LONG STAINLESS STEEL POZI PAN SCREW | |
| 16 | 219016 | M5 SHAKEPROOF WASHER | |
| 17 | 391076 | 173MM LONG X 1/2 INCH DIAMETER X 18G STAINLESS STEEL TUBE | |
| 18 | 229346 | SPACER | |
| 19 | 206713 | 80MM DIAMETER BLACK WHEEL | |
| 20 | 391056 | 90MM LONG X 3/8 INCH DIAMETER STAINLESS STEEL BAR | |
| 21 | 229290 | 3/8 INCH STAINLESS CAP | |
| 22 | 219889 | M10 SINGLE COIL STAINLESS STEEL WASHER | |
| 23 | 303896 | FLOOR TOOL CONNECTOR WELD ASSEMBLY (NO PIN) | |
| 24 | 206712 | 50MM DIAMETER BLACK WHEEL | |
| 25 | 226023 | EXTENSION SPRING | |
| 26 | 229293 | 1 INCH (STAINLESS STEEL) SPLIT RING | |
| 27 | 219643 | M6 X 35MM LONG STAINLESS STEEL POZI PAN SCREW | |
| 28 | 329163 | PIVOT BOSS | |
| 29 | 219642 | M6 STAINLESS STEEL NYLON INSERT NUT | |
| 30 | 303626 | BACKPLATE C/W STUDS | |
| 31 | 403043 | BATTERY TRAY (PAINTED GREY) | |
| 32 | 303636 | NUTSERTED STAINLESS STEEL BATTERY STRAP | |
| 33 | 303603 | BATTERY ANGLE BRACKET WELDED ASSEMBLY | |
| 34 | 219393 | P CLIP | |
| 35 | 219867 | NYLON SPACER | |
| 36 | 219633 | M5 STAINLESS STEEL NYLON INSERT NUT | |
| 37 | 219573 | SCREW INSULATOR | |
| 38 | 219572 | M5 X 16MM LONG POZI PAN COUNTERSUNK STAINLESS STEEL SCREW | |
| 39 | 230138 | 98 A/H STUD TERMINAL GEL TYPE BATTERY | |
| 40 | 229240 | END TIP | |
| 41 | 303483 | LOCKING BAR WELDED ASSEMBLY | |
| 42 | 219873 | COMPRESSION SPRING (STAINLESS STEEL) | |
| 43 | 206648 | ROLLER | |
| 44 | 219355 | M5 FORM A STAINLESS STEEL WASHER | |
| 45 | 329432 | CHARGER MOUNTING BRACKET | |
| 46 | 303630 | FUSE HOLDER BRACKET WELDED ASSEMBLY | |
| 47 | 329451 | CONTACTOR BRACKET (3 FUSE TYPE) | |
| 48 | 206883 | 24V 10A NORD CHARGER (230V) | |
| 49 | 206884 | 24V 10A NORD CHARGER (120V) | |
| 49 | 219301 | No6 X 3/8 INCH LONG POZI PAN SELF TAP SCREW | |
| 50 | 230102 | FUSE HOLDER RATED AT 60 AMPS | |
| 51 | 219864 | M5 X 8MM LONG POZI PAN SCREW | |
| 52 | 230104 | 30 AMP MAXI FUSE | |
| 53 | 321156 | ISOLATOR BLOCK & INSERTS ASSEMBLY | |
| 54 | 219466 | ISOLATOR CONTACT | |
| 55 | 221151 | M4 X 12MM LONG POZI PAN SCREW | |
| 56 | 219015 | M4 SHAKEPROOF WASHER | |
| 57 | 230111 | CONTACTOR | |
| 58 | 219569 | No8 X 1/2 INCH LONG POZI PAN STAINLESS STEEL PLASTITE SCREW | |
| 59 | 219566 | M4 X 6MM LONG POZI PAN SCREW | |
| 60 | 236097 | CONTACTOR LEAD ASSEMBLY | |
| 61 | 208000 | 92MM LONG ALUMINIUM SPACER | |
| 62 | 219047 | M5 X 10MM LONG POZI PAN SEMS SCREW | |
| 63 | 221035 | HOURS METER | |
| 64 | 219471 | M4 X 12MM LONG POZI PAN SEMS SCREW | |
| 65 | 219687 | M4 NYLON INSERT STAINLESS STEEL NUT | |
| 66 | 221029 | CURRENT SHUNT / CONNECTION PCB | |
| 67 | 219574 | NYLON SPACER | |
| 68 | 229550 | PROCESSED ENCLOSURE BOX | |
| 69 | 329447 | COVER PLATE | |
| 70 | 303631 | NUTSERTED SPLASH GAURD | |
| 71 | 219661 | M5 X 35MM LONG POZI PAN STAINLESS STEEL SCREW | |
| 72 | 321119 | 750MM LONG DC CHARGING LEAD ASSEMBLY | |
| 73 | 329440 | EXHAUST COVER PLATE | |
| 74 | 219668 | M5 X 10MM LONG POZI PAN STAINLESS STEEL SCREW | |
| 75 | 329452 | FUSE COVER RETAINING PLATE | |
| 76 | 206664 | LENS MOULDING (NO PRINT) | |
| 77 | 329445 | LENS COVER PLATE | |
| 78 | 219547 | M5 X 16MM LONG POZI PAN STAINLESS STEEL SCREW | |
| 79 | 329445 | LENS COVER PLATE | |
| 80 | 329435 | FUSE COVER PLATE | |
| 81 | 219644 | M5 FORM G STAINLESS STEEL WASHER | |
| 82 | 202117 | FUSE COVER GASKET | |
| 83 | 206666 | M5 KNURLED KNOB | |
| 84 | 206667 | M5 RETAINING WASHER | |
| 85 | 219738 | M4 KNOB | |
| 86 | 206677 | ROLLER SPACER | |
| 87 | 219748 | M6 X 50MM STAINLESS STEEL CAP HEAD BOLT | |
| 88 | 219721 | M5 STAINLESS STEEL FULL NUT | |
| 89 | 221038 | 2 AMP 20MM QUICK BLOW FUSE | |
| 90 | 221037 | 20 AMP FUSE | |
| 91 | 230112 | MAXI FUSE PULLER | |
| 92 | 220681 | ISOLATOR KNOB | |
| 93 | 219417 | UNIFIED M/C SCREW INSULATOR | |
| 94 | 206877 | TRANSAXLE (C/W SHORTER LEAD & NO BRAKE) | |
| 95 | 206727 | 200MM DIAMETER X 50MM WIDE ALLOY WHEEL | |
| 96 | 219877 | M8 X 30 STAINLESS STEEL WASHER | |
| 97 | 219823 | M8 X 20MM LONG STAINLESS STEEL SOCKET BUTTON HEAD BOLT | |
| 98 | 219889 | 19MM HEAVY DUTY CIRCLIP | |
| 99 | 206744 | 6MM X 6MM X 32MM FEATHER KEY | |
| 100 | 329780 | TRANSAXLE CLAMP | |
| 101 | 219578 | M8 FORM A STAINLESS STEEL WASHER | |
| 102 | 206881 | MOTOR CONTROLLER | |
| 103 | 219913 | M4 X 30MM LONG POZI PAN STAINLESS STEEL SCREW | |
| 104 | 219688 | M4 FORM A STAINLESS STEEL WASHER | |
| 105 | 321329 | TANGENTIAL DISCHARGE 2-STAGE VAC MOTOR & LEAD ASSEMBLY | |
| 106 | 219820 | M5 X 20MM LONG SOCKET CAP SCREW | |
| 107 | 219005 | M5 FORM G WASHER | |
| 108 | 202116 | ISOLATOR WASHER GASKET | |
| 109 | 220725 | SELF ADHESIVE LENS GASKET | |
| 110 | 220316 | TERMINAL BLOCK ELKAY | |
| 111 | 219321 | M4 X 30MM LONG POZI PAN SCREW | |
| 112 | 219206 | M4 FORM A WASHER | |
| 113 | 219083 | M4 NYLON INSERT NUT | |
| 114 | 219200 | 6MM X 24MM LONG SPACER | |
| 115 | 219311 | M5 X 70MM LONG POZI PAN COUNTERSUNK SCREW | |
| 116 | 219514 | P-CLIP | |
| 117 | 219645 | M5 STAINLESS STEEL DOME NUT | |
| 118 | 219497 | M5 NYLON WASHER | |
| 119 | 219919 | 32MM-50MM STAINLESS STEEL HOSE CLIP | |

Numatic International Spare Parts

ModelNo: TTB4500/100ST/TT3450S/TT3450C/TTB3450S/TTB3450C/TT4500S/TT4550S/
TTB4500S/TTB4552S/TTB3450CRS/TTB4552/100ST Tank / Separator Assembly

234276

DRAWING: EXP-0707 ISS: A15
09/04/2009



Numatic International Spare Parts

ModelNo: TTB4500/100ST/TT3450S/TT3450C/TTB3450S/TTB3450C/TT4500S/TT4550S/TTB4500S/
TTB4552S/TTB3450CRS/TTB4552/100ST Tank / Separator Assembly

| POS: | ITEM NO: | DESCRIPTION: | COMMENTS: |
|------|----------|---|--|
| 1 | 229493 | SEPARATOR TOP | |
| 2 | 229494 | CLIP MOULDING | |
| 3 | 219569 | No8 X 1/2 INCH LONG POZI PAN STAINLESS STEEL PLASTITE SCREW | |
| 4 | 303604 | PROCESSED SEPARATOR MOULDING (S TYPE) | |
| 5 | 329408 | GASKET SUPPORT RING | |
| 6 | 202110 | SEALING GASKET | |
| 7 | 219852 | NO6 X 1/2 LONG POZI PAN STAINLESS STEEL SELF TAP SCREW | |
| 8 | 206265 | BARREL FILTER | |
| 9 | 206228 | DRAIN HOSE CONNECTOR | |
| 10 | 219310 | RUBBER WASHER | |
| 11 | 206116 | BLACK NUT | |
| 12 | 229501 | FLOAT MOULDING | |
| 13 | 229488 | BLUE TOP TANK | TTB3450S/TTB3450S/TTB3450C/TT3450C/TTB3450CRS |
| | 229490 | BLUE TOP TANK | TT4550S/TTB4500S/TTB4552S/TT4500/TTB4500/100ST/TTB4552/100ST |
| 14 | 207000 | GRIT FILTER BASKET | |
| 15 | 229762 | HOSE CLIP MOULDING | |
| 16 | 219668 | M5 X 10MM LONG POZI PAN STAINLESS STEEL SCREW | |
| 17 | 206842 | 420MM LONG BLACK STRETCH HOSE C/W CUFFS | |
| 18 | 206111 | HOSE CLOSURE | |
| 19 | 219674 | 30/40MM DIAMETER STAINLESS STEEL JUBILEE CLIP | |
| 20 | 219016 | M5 SHAKEPROOF WASHER | |
| 21 | 229491 | BLUE BOTTOM TANK | TT3450S |
| | 229487 | BLUE BOTTOM TANK | TTB3450S/TTB3450C/TT3450C/TTB3450CRS |
| | 229536 | BLUE BOTTOM TANK | TT4550S/TTB4500S |
| | 229489 | BLUE BOTTOM TANK | TTB4500S/TTB4552S/TTB4500/100ST/TTB4552/100ST |
| 22 | 229282 | FILTER CAP | |
| 23 | 219452 | 100MM DIAMETER HOLE PLUG | |
| 24 | 219688 | M4 FORM A STAINLESS STEEL WASHER | |
| 25 | 219665 | TOOL CLIP | |
| 26 | 219697 | M4 X 8MM LONG POZI PAN STAINLESS STEEL SCREW | |
| 27 | 206597 | TANK TAP | |
| 28 | 219974 | BONDED WASHER 5/8 BSP NON S/C | |
| 29 | 206274 | FILTER CONNECTOR | |
| 30 | 219626 | 23MM I/D X 2.5MM SECTION O RING | |
| 31 | 213025 | 600MM - 630MM LONG DUMP HOSE ASSEMBLY | |
| 32 | 206697 | 1255MM LONG SUCTION HOSE | |
| | 206698 | 1500MM LONG SUCTION HOSE | TTB3450C/TT3450C |
| | 206696 | 1200MM LONG SUCTION HOSE | TT3450S/TT4500S/TT4550S |
| | 329787 | 1600MM LONG SUCTION HOSE | TTB4500/100ST / TTB4552/100ST |
| 33 | 206696 | 1200MM LONG SUCTION HOSE | ALL MODELS EXCEPT: TTB3450C & TT3450C |
| | 329786 | 1850MM LONG SUCTION HOSE | TTB3450C & TT3450C |