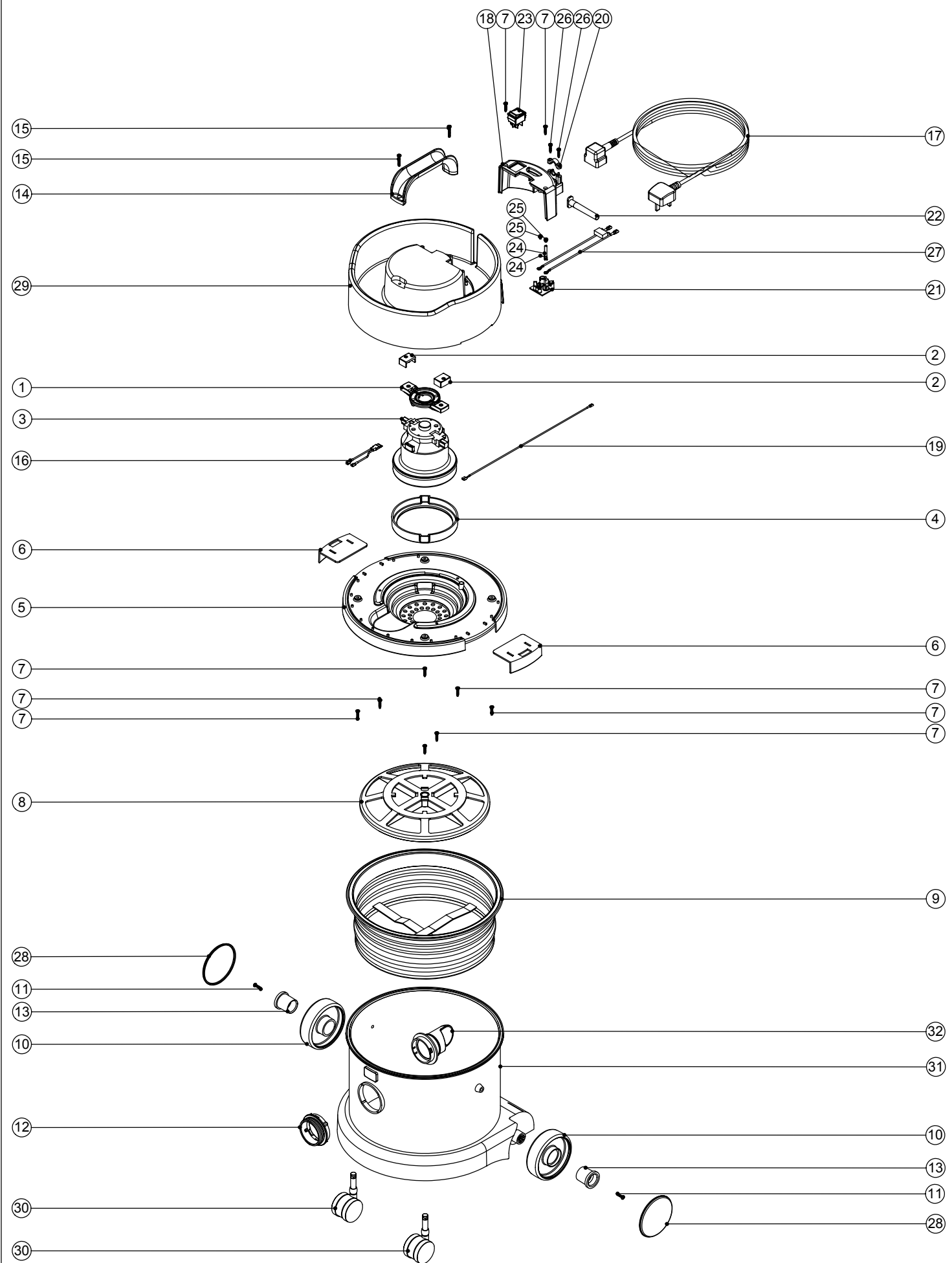


**Numatic International Spare Parts**

**Model No: NVP-370**

234199  
DRAWING: EXP-0630 ISS:A01  
01/07/2003



**Numatic International Spare Parts**

**Model No: NVP-370**

POS:	ITEM NO:	DESCRIPTION:	COMMENTS:
1	227432	MOTOR PLATE	
2	227438	RUBBER END PAD	
3	205070	230V MOTOR	
4	202092	BOTTOM MOTOR GASKET	
5	227343	GREY BOTTOM MOTOR HOUSING	
	227540	BLACK BOTTOM MOTOR HOUSING	
6	227115	TOGGLE	
7	219041	No8 X 3/4 INCH LONG POZI PAN SCREW	
8	209050	SINGLE FILTER GRID	
9	207102	WHITE FILTER ASSEMBLY	
10	227640	2 SHOT WHEEL ASSEMBLY	
11	219105	No8 X 5/8 INCH LONG POZI PAN PLASTITE SCREW	
12	227346	GREY THREADED NECK	
	227396	RED THREADED NECK	
13	227011	BLACK WHEEL HUB CAP	
14	206451	HANDLE	
15	219104	No8 X 1 INCH LONG POZI PAN PLASTITE SCREW	
16	220929	BIMETALIC OVERLOAD ASSEMBLY	
17	236009	10.0M X 1.00MM X 2 CORE NUCABLE (UK PLUG)	
	236013	10.0M X 1.00MM X 2 CORE NUCABLE (EURO PLUG)	
18	227342	GREY SWITCH BOX	
	227521	BLACK SWITCH BOX	
19	320296	340MM LONG WHITE LINK WIRE	
20	227564	PLUG LOCATION CLAMP	
21	325255	TERMINAL BLOCK C/W INSERTS	
22	220923	STRESS RELIEF	
23	220552	RED ROCKER SWITCH	
24	206562	CONTACT PIN	
25	219090	M4 X 8MM LONG POZI PAN SEMS SCREW	
26	219107	No6 X 5/8 INCH LONG POZI PAN PLASTITE SCREW	
27	220859	SUPPRESSOR ASSEMBLY	
28	227638	BLACK PLAIN TRIM	
29	325256	GREY TOP MOTOR HOUSING (PRINTED BLACK NUMATIC LOGO)	
	325281	BLACK TOP MOTOR HOUSING (PRINTED WHITE NUMATIC LOGO)	
30	204067	50MM BLACK TWIN CASTOR	
31	225119	GREY MOULDED DRUM + FACE	
	227113	RED MOULDED DRUM + FACE	
32	227363	BAG CONNECTOR	
33	218005	NVB-2B/2 DISPOSABLE FILTER BAG	NOT SHOWN