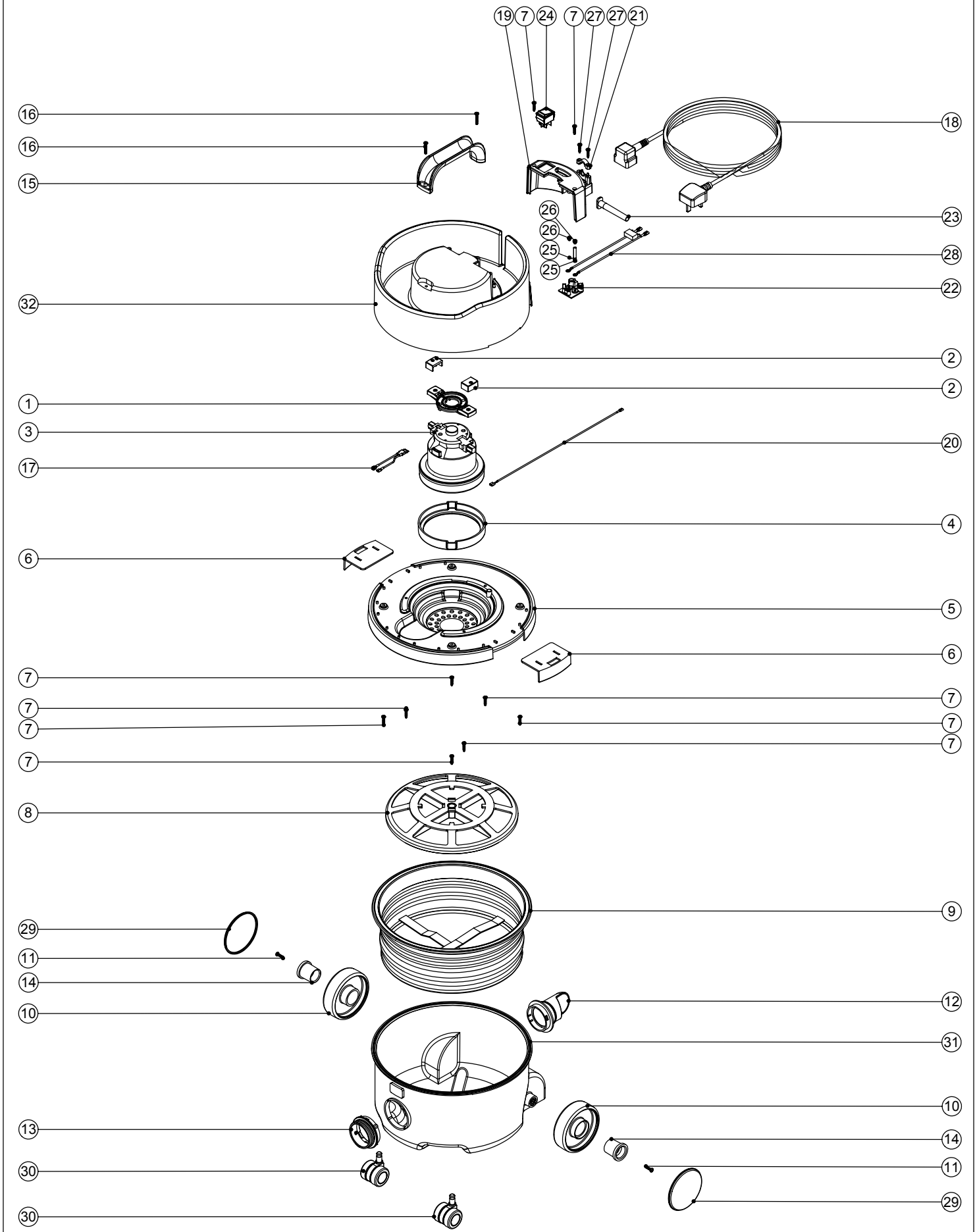


# Numatic International Spare Parts

Model No: NVP180

234197  
DRAWING: EXP-0628 ISS:A01  
27/06/2003



# Numatic International Spare Parts

Model No: NVP180

POS:	ITEM NO:	DESCRIPTION:	COMMENTS:
1	227432	MOTOR PLATE	
2	227438	RUBBER END PAD	
3	205070	230V MOTOR	
4	202092	BOTTOM MOTOR GASKET	
5	227343	GREY BOTTOM MOTOR HOUSING	
	227540	RED BOTTOM MOTOR HOUSING	
6	227115	TOGGLE	
7	219041	No8 X 3/4 INCH LONG POZI PAN SCREW	
8	209050	SINGLE FILTER GRID	
9	207102	WHITE FILTER ASSEMBLY	
10	227640	2 SHOT WHEEL ASSEMBLY	
11	219105	No8 X 5/8 INCH LONG POZI PAN PLASTITE SCREW	
12	227363	BAG CONNECTOR	
13	227346	GREY THREADED NECK	
	227396	RED THREADED NECK	
14	227011	BLACK WHEEL HUB CAP	
15	206451	HANDLE	
16	219104	No8 X 1 INCH LONG POZI PAN PLASTITE SCREW	
17	220929	BIMETALIC OVERLOAD ASSEMBLY	
18	236009	10.0M X 1.00MM X 2 CORE NUCABLE (UK PLUG)	
	236013	10.0M X 1.00MM X 2 CORE NUCABLE (EURO PLUG)	
19	227342	GREY SWITCH BOX	
	227521	BLACK SWITCH BOX	
20	320296	340MM LONG WHITE LINK WIRE	
21	227564	PLUG LOCATION CLAMP	
22	325255	TERMINAL BLOCK C/W INSERTS	
23	220923	STRESS RELIEF	
24	220552	RED ROCKER SWITCH	
25	206562	CONTACT PIN	
26	219090	M4 X 8MM LONG POZI PAN SEMS SCREW	
27	219107	No6 X 5/8 INCH LONG POZI PAN PLASTITE SCREW	
28	220859	SUPPRESSOR ASSEMBLY	
29	227638	BLACK PLAIN TRIM	
30	204000	40MM PU-TYRED BLACK TWIN WHEEL CASTOR	
31	227484	GREY CONTAINER (PLUS FACE)	
	227503	RED CONTAINER (PLUS FACE)	
32	325256	GREY TOP MOTOR HOUSING (PRINTED BLACK NUMATIC LOGO)	
	325281	BLACK TOP MOTOR HOUSING (PRINTED WHITE NUMATIC LOGO)	
33	218012	NVM-1C/2 DISPOSABLE FILTER BAG	NOT SHOWN