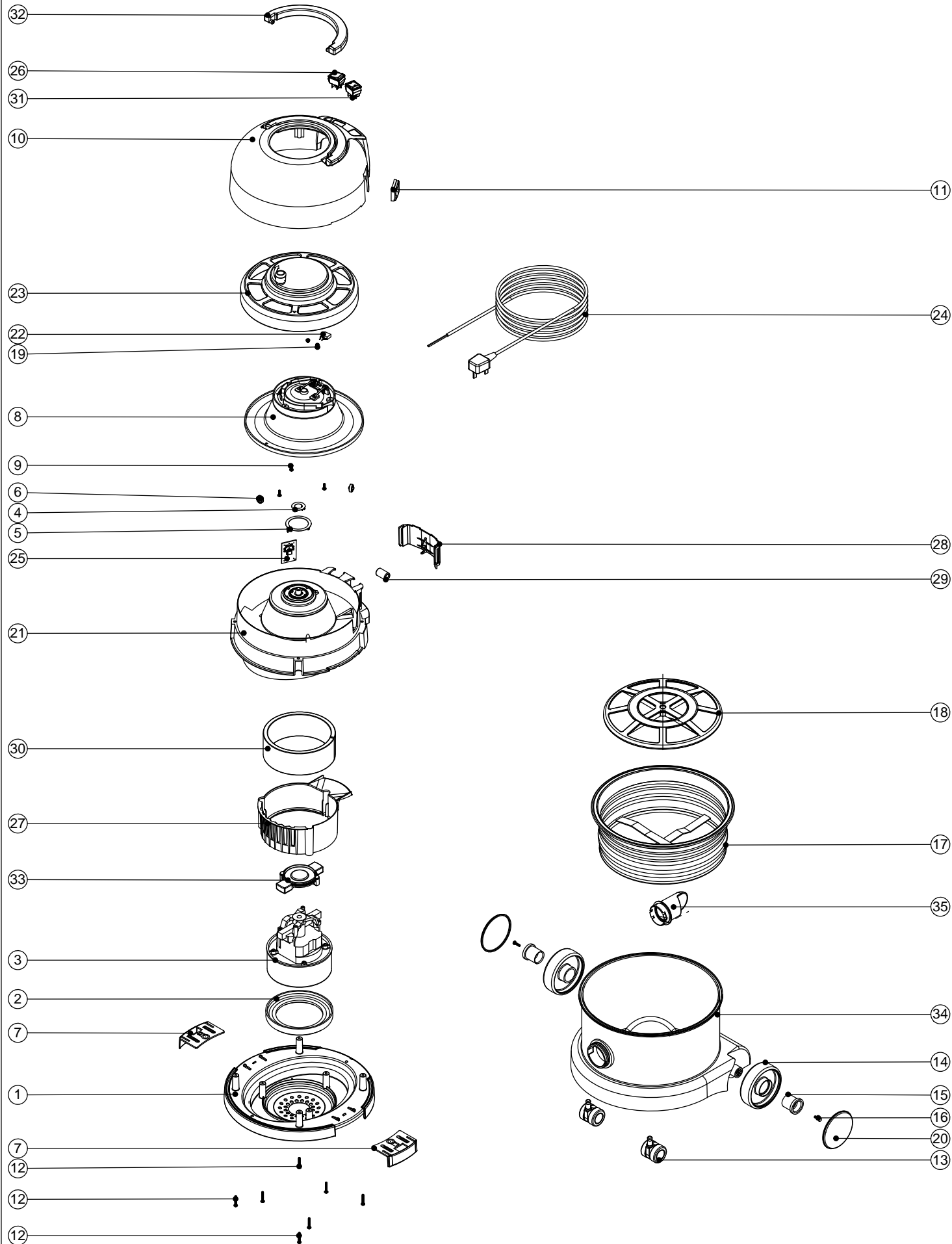


Numatic International Spare Parts

Model No: NSR200-22 (800W)

NB: FOR WIRING SEE DRAWING: DRW-5019

234715
DRAWING: DRW-5087 ISS: A01
18/01/2010



Numatic International Spare Parts

Model No: NSR 200-22 (800W)

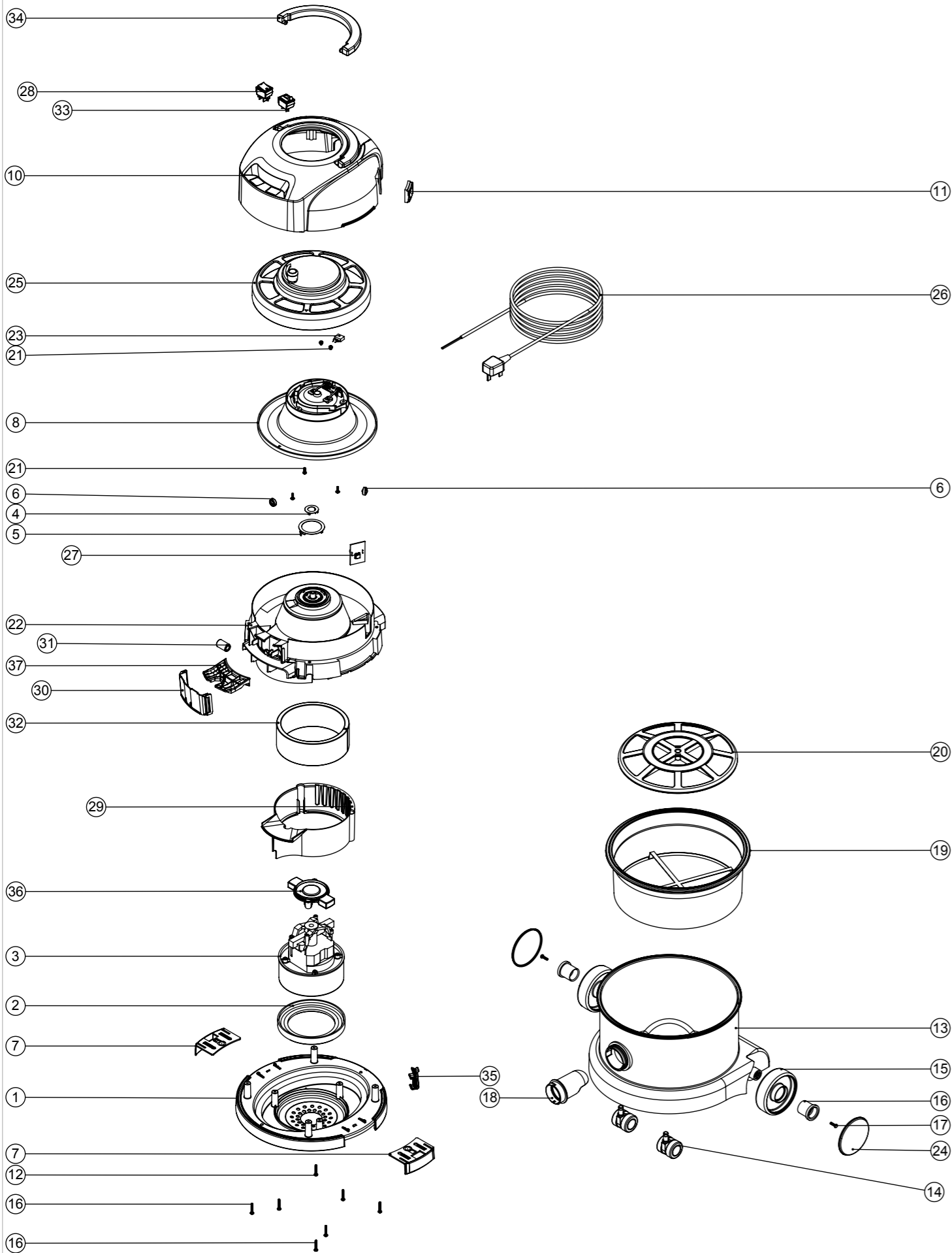
POS	ITEM NO:	DESCRIPTION:	COMMENTS:
1	229618	BOTTOM MOTOR HOUSING (BI-MATERIAL)	
2	227882	BOTTOM MOTOR GASKET	
3	205403	240V 2 STAGE THRO FLOW TAPER FAN MOTOR (DL21104T) TCO	
	205327	240V 2 STAGE (DL2804ET)	
4	227141	INNER CONTACT RING	
5	227142	OUTER CONTACT RING	
6	227436	ROLLER WHEEL	
7	229715	TOGGLE (BI-MATERIAL)	
8	227447	CABLE REEL MOULDING ASSEMBLY	
	227348	CABLE REEL MOULDING ASSEMBLY	CSA APPROVED MACHINES
9	219101	No8 X 1/2 INCH LONG POZI PAN PLASTITE SCREW	
10	325916	GREEN COVER + HANDLE ASSEMBLY	
11	227108	BLACK CABLE ENTRY	
12	219104	No8 X 1 INCH LONG POZI PAN PLASTITE SCREW	
13	204000	40MM PU-TYRED BLACK TWIN WHEEL CASTOR	
14	227640	2 SHOT WHEEL ASSEMBLY	
15	227868	WHEEL HUB FOR 2 SHOT WHEEL	
16	219105	No8 X 5/8 INCH LONG POZI PAN PLASTITE SCREW	
17	207098	WHITE FILTER (SMS) + U GASKET	
18	209200	12 INCH FILTER GRID	
19	219090	M4 X 8MM LONG POZI PAN SEMS SCREW	
20	227638	BLACK PLAIN TRIM	
21	229620	TOP MOTOR HOUSING	
22	230096	SUPPRESSOR CAPACITOR ASSEMBLY WITH DISCHARGE RESISTOR	
23	333113	CABLE REEL COVER ASSEMBLY (C/W WINDER KNOB)	
24	236116	12.5MT X 1MM X 2 CORE (H05 V2V2-F) UK PLUG	
	236116	12.5MT X 1MM X 2 CORE (H05 V2V2-F) EURO PLUG	
25	206735	NUMATIC 2 SPEED CONTROL PCB	
26	220243	BLACK/GREEN ROCKER SWITCH	
27	229621	AIR GUIDE	
28	229623	SWITCH COVER	
29	230097	AXIAL FERRITE BEAD	
30	203020	POD SIDE FELT	
31	220552	RED ROCKER SWITCH	
32	227120	HANDLE	
33	229614	MOTOR PLATE BI-MATERIAL	
34	225303	GREEN CONTAINER	
35	229768	BAG CONNECTOR	

Numatic International Spare Parts

Model No: NSR 200A (Autosave) Exploded Drawing

234716
DRAWING: DRW-5112 ISS:A02
22/01/2010

NB: FOR WIRING SEE DRAWING: DRW-5104



Numatic International Spare Parts

Model No: NSR 200A (Autosave) Exploded Drawing

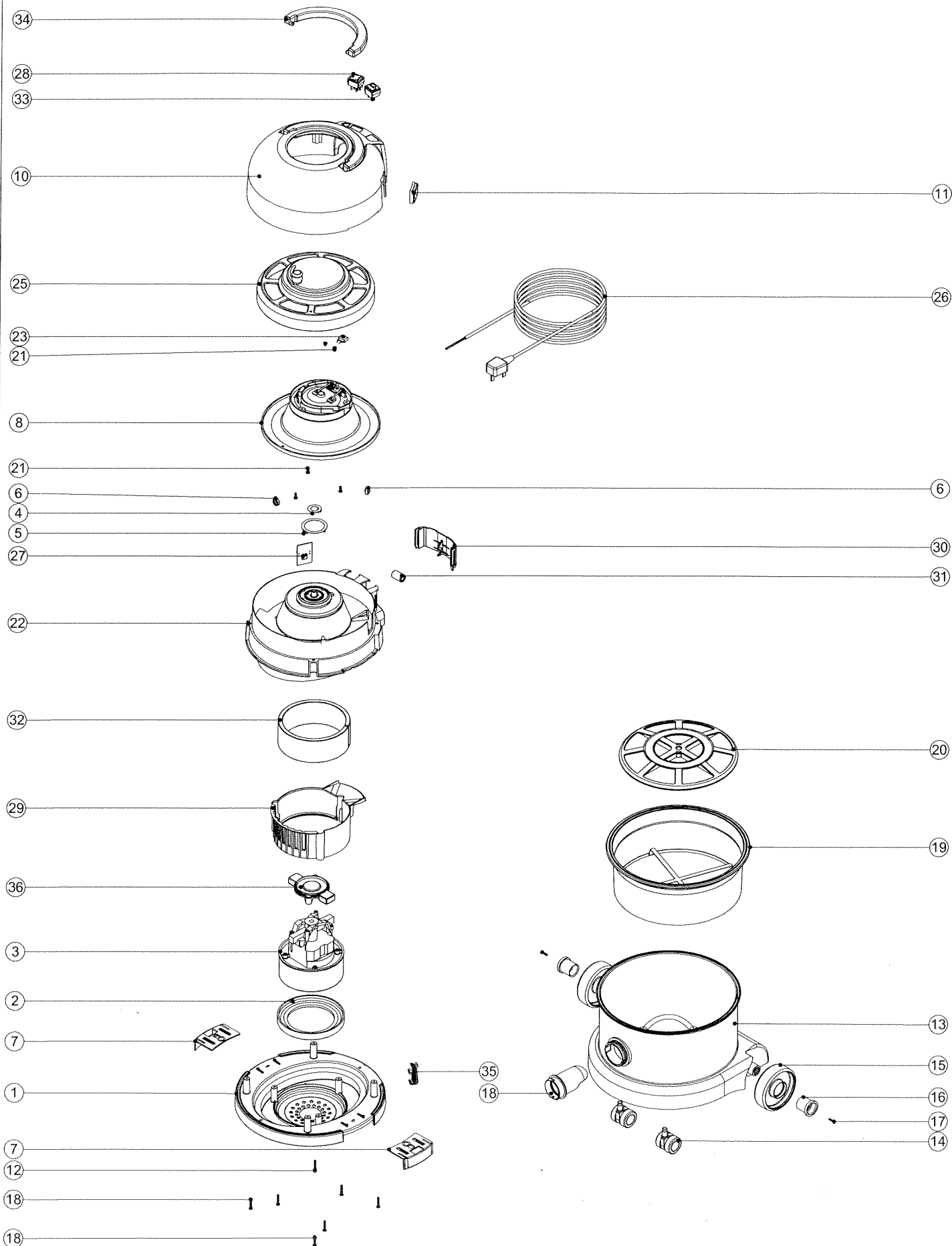
POS:	ITEM NO:	DESCRIPTION:	COMMENTS:
1	229716	BOTTOM MOTOR HOUSING (TWN SHOT)	
2	227882	BOTTOM MOTOR GASKET	
3	205327	240V 2-STAGE (DL2804ET)	
	205326	220V 2-STAGE (DL2802ET)	
4	227141	INNER CONTACT RING	
5	227142	OUTER CONTACT RING	
6	227436	ROLLER WHEEL	
7	229715	TOGGLE (TWN SHOT)	
8	227447	CABLE REEL MOULDING ASSEMBLY	
9	219101	No8 X 1/2 INCH LONG POZI PAN PLASTITE SCREW	
10	325812	PVR COVER + HANDLE ASSEMBLY	INCLUDES ITEM 34
11	227108	BLACK CABLE ENTRY	
12	219104	No8 X 1 INCH LONG POZI PAN PLASTITE SCREW	
13	225303	GREEN CONTAINER + FACE	
14	204000	40MM PU-TYRED BLACK TWN WHEEL CASTOR	
15	227640	2 SHOT WHEEL ASSEMBLY	
16	227868	WHEEL HUB FOR 2 SHOT WHEEL	
17	219105	No8 X 5/8 INCH LONG POZI PAN PLASTITE SCREW	
18	229768	SNAP-FIT BAG CONNECTOR	
19	207109	12 INCH FILTER (DOUBLE BOTTOM) 160GRM SMS	
20	209200	12 INCH FILTER GRID	
21	219090	M4 X 8MM LONG POZI PAN SEMS SCREW	
22	237129	PVR TOP MOTOR HOUSING	
23	230096	SUPPRESSOR CAPACITOR ASSEMBLY WTH DISCHARGE RESISTOR	
24	227638	BLACK TRIM	
25	333113	CABLE REEL COVER ASSEMBLY (C/W WINDER KNOB)	
26	236116	12.5MT X 1MM X 2 CORE (HO5 V2V2-F) UK PLUG	
	236151	12.5MT X 1MM X 2 CORE (HO5 V2V2-F) EURO PLUG	
27	208100	AUTOSAVE 2 SPEED CONTROL PCB	
28	220582	GREEN ROCKER SWITCH	
29	229621	AIR GUIDE	
30	229623	SWITCH COVER	
31	230097	AXIAL FERRITE BEAD	
32	203020	POD SIDE FELT	
33	221102	RED MOMENTARY ROCKER SWITCH (BLACK BODY / RED ILLUMINATION WINDOW)	
34	227120	HANDLE	
35	229426	HENRY CLIPHOLDER	
36	229614	MOTOR PLATE BI-MATERIAL	
37	237132	PVR WIRE ENTRY ENCLOSURE	

Numatic International Spare Parts

Model No: NSR 200A (Autosave) Exploded Drawing

234716
DRAWING: DRW-5112 ISS:A01
22/01/2010

NB: FOR WIRING SEE DRAWING: DRW-5104



Numatic International Spare Parts

Model No: NSR 200A (Autosave) Exploded Drawing

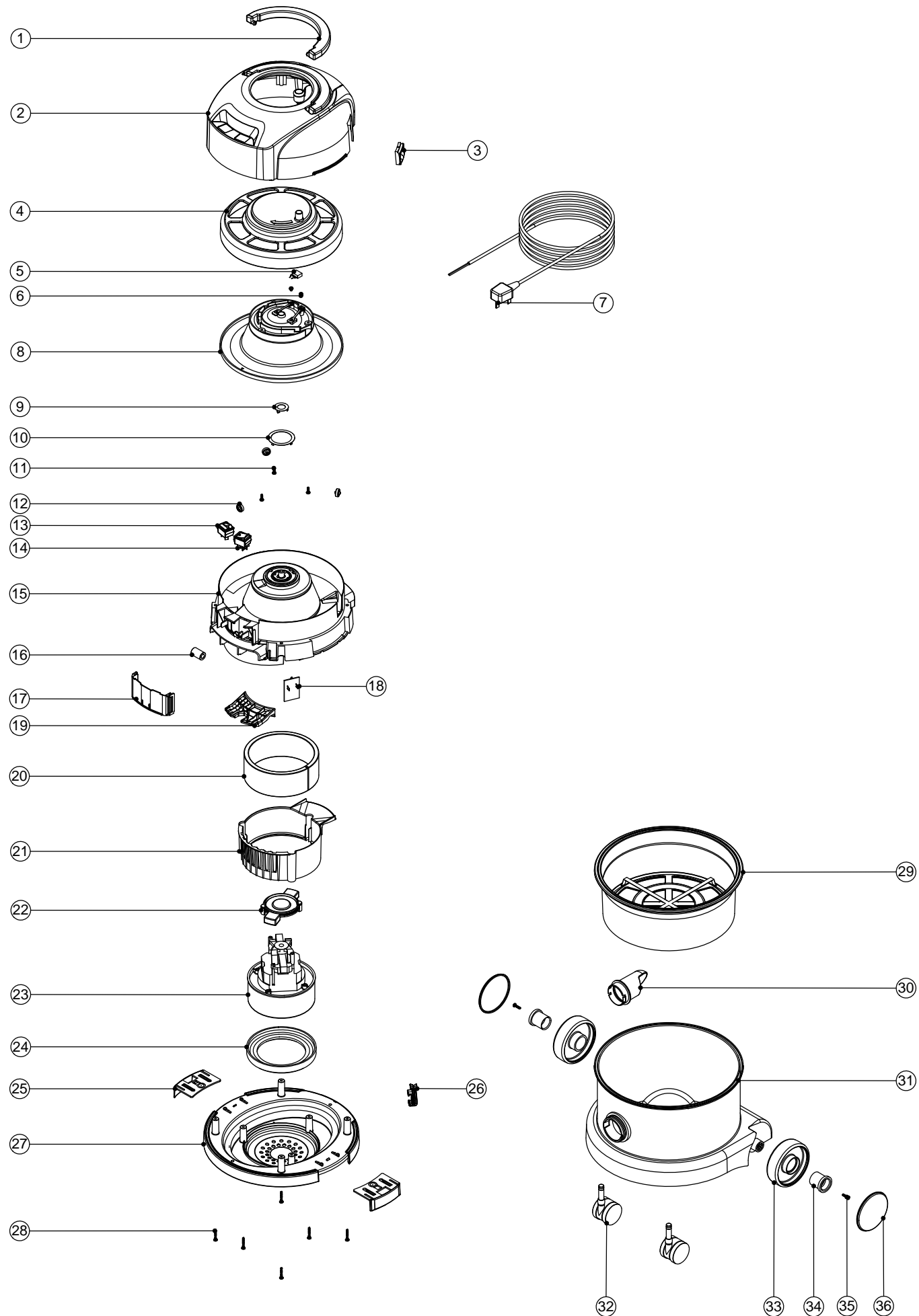
POS:	ITEM NO:	DESCRIPTION:	COMMENTS:
1	229716	BOTTOM MOTOR HOUSING (TWIN SHOT)	
2	227882	BOTTOM MOTOR GASKET	
3	205327	240V 2-STAGE (DL2804ET)	
	205326	220V 2-STAGE (DL2802ET)	
4	227141	INNER CONTACT RING	
5	227142	OUTER CONTACT RING	
6	227436	ROLLER WHEEL	
7	229715	TOGGLE (TWIN SHOT)	
8	227447	CABLE REEL MOULDING ASSEMBLY	
9	219101	No 8 X 1/2 INCH LONG POZIPAN PLASTITE SCREW	
10	229877	COVER + HANDLE ASSEMBLY (PRINT ED PINK HETTY LOGO + GREEN AUTOSAVE FLOWER LOGO)	
11	227108	BLACK CABLE ENTRY	
12	219104	No 8 X 1 INCH LONG POZIPAN PLASTITE SCREW	
13	225303	GREEN CONTAINER + FACE	
14	204000	40MM PU-TYRED BLACK TWIN WHEEL CASTOR	
15	227640	2 SHOT WHEEL ASSEMBLY	
16	227868	WHEEL HUB FOR 2 SHOT WHEEL	
17	219105	No 8 X 5/8 INCH LONG POZIPAN PLASTITE SCREW	
18	229768	SNAP-FIT BAG CONNECTOR	
19	207109	12 INCH FILTER (DOUBLE BOTTOM) 160GRM SMS	
20	209200	12 INCH FILTER GRID	
21	219090	M4 X 8MM LONG POZIPAN SEMS SCREW	
22	229620	TOP MOTOR HOUSING	
23	230096	SUPPRESSOR CAPACITOR ASSEMBLY WITH DISCHARGE RESISTOR	
24	227638	BLACK TRIM	
25	333113	CABLE REEL COVER ASSEMBLY (C/W WINDER KNOB)	
26	236116	12.5MT X 1MM X 2 CORE (HO5 V2V2-F) UK PLUG	
	236151	12.5MT X 1MM X 2 CORE (HO5 V2V2-F) EURO PLUG	
27	208100	AUTOSAVE 2 SPEED CONTROL PCB	
28	220582	GREEN ROCKER SWITCH	
29	229621	AIR GUIDE	
30	229623	SWITCH COVER	
31	230097	AXIAL FERRITE BEAD	
32	203020	POD SIDE FELT	
33	221102	RED MOMENTARY ROCKER SWITCH (BLACK BODY / RED ILLUMINATION WINDOW)	
34	227120	HANDLE	

Numatic International Spare Parts

Model No: NSR200A GREEN EXPLODED DRAWING

234716
DRAWING: DRW-5112 ISS:A04
08/10/2010

NB: FOR WIRING SEE DRAWING: WD-0368



Numatic International Spare Parts

Model No: NSR200A GREEN EXPLODED DRAWING

POS	ITEM NO:	DESCRIPTION	COMMENTS
1	227120	HANDLE	
2	325812	PVR BLACK AUTOSAVE COVER + HANDLE. PRINT WHITE NUMATIC+GREEN AUTOSAVE FLOWER LOGO	INCLUDES ITEM 1 (227120)
3	227108	BLACK CABLE ENTRY	
4	333113	CABLE REEL COVER ASSEMBLY (C/W WINDER KNOB)	
5	230096	SUPPRESSOR CAPACITOR ASSEMBLY WITH DISCHARGE RESISTOR	
6	219090	M4 X 8MM LONG POZI PAN SEMS SCREW	
7	236116	12.5MT X 1MM X 2 CORE (H05 V2V2-F) UK PLUG	
	220251	12.5M X 1.00MM X 2 CORE CABLE (EURO PLUG)	
	220192	12.5M X 1.00MM X 2 CORE CABLE (SWISS PLUG)	
	220467	12.5M X 1.00MM X 2 CORE CABLE (SOUTH AFRICAN PLUG)	
	236044	10.0M X 1.00MM X 2 CORE CABLE (AUSTRALIAN PLUG)	
	236049	10.0M X 1.5MM X 2 CORE CABLE (16 AMP INDUSTRIAL PLUG)	
8	227132	CABLE REEL MOULDING ASSEMBLY	
9	227141	INNER CONTACT RING	
10	227142	OUTER CONTACT RING	
11	219101	No8 X 1/2 INCH LONG POZI PAN PLASTIITE SCREW	
12	227436	ROLLER WHEEL	
13	221102	RED MOMENTARY ROCKER SWITCH (BLACK BODY / RED ILLUMINATION WINDOW)	
14	220582	GREEN ROCKER SWITCH	
15	237129	TOP MOTOR HOUSING (PVR FRONT SWITCH)	
	237130	TOP MOTOR HOUSING V2 (PVR FRONT SWITCH)	CSA APPROVED MACHINES
16	230097	AXIAL FERRITE BEAD	
17	229623	SWITCH COVER	
	229738	SWITCH COVER V2	CSA APPROVED MACHINES
18	206606	NUMATIC 2 SPEED CONTROL PCB	
19	237132	WIRE ENTRY ENCLOSURE (PVR FRONT SWITCH)	
	237133	WIRE ENTRY ENCLOSURE V2 (PVR FRONT SWITCH)	CSA APPROVED MACHINES
20	203020	POD SIDE FELT	
21	229621	AIR GUIDE	
22	229614	MOTOR PLATE BI -MATERIAL	
23	205327	240V 2 STAGE THRO FLOW TAPER FAN MOTOR (DL21104T) TCO	
	205326	220V 2 STAGE THRO FLOW TAPER FAN ECO MOTOR (DL2802ET) TCO	
	205225	120V 2 STAGE THRO FLOW TAPER FAN ECO MOTOR (DL21101ET) TCO	
24	227882	BOTTOM MOTOR GASKET	
25	229715	TOGGLE (TWIN SHOT)	
26	229426	HENRY CLIPHOLDER	
27	229618	BOTTOM MOTOR HOUSING (TWIN-SHOT)	
28	219104	No8 X 1 INCH LONG POZI PAN PLASTITE SCREW	
29	207109	12 INCH FILTER (DOUBLE BOTTOM) 160GRM SMS	
30	229768	BAG CONNECTOR (2006)	
31	225303	GREEN 200 DRUM (NO PADS)	
	225193	GREEN 200 DRUM PLUS FACE (NO PADS)	
32	204111	50MM TWIN WHEEL CASTOR WITH PU TYRE	
33	227640	2 SHOT WHEEL ASSEMBLY	
34	227868	WHEEL HUB FOR 2 SHOT WHEEL	
35	219105	No8 X 5/8 INCH LONG POZI PAN PLASTITE SCREW	
36	227689	GREEN TRIM	