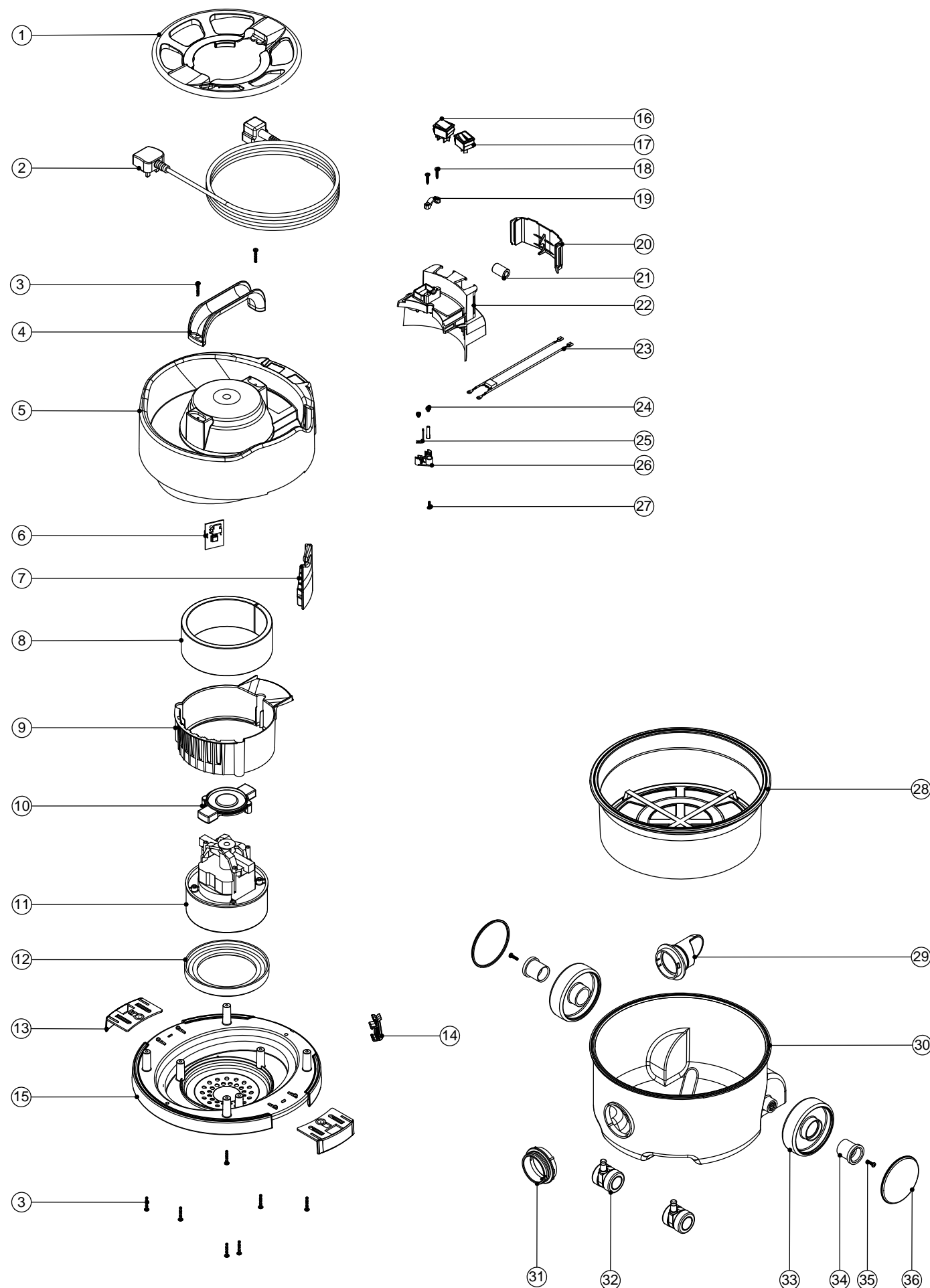


Numatic International Spare Parts

Model No: NSP180A / 200A GREEN EXPLODED DRAWING

234770
DRAWING: DRW-5140 ISS:A01
11/10/2010

NB: FOR WIRING SEE DRAWING: DRW-4550



Numatic International Spare Parts

Model No: NSP180A / 200A GREEN EXPLODED DRAWING

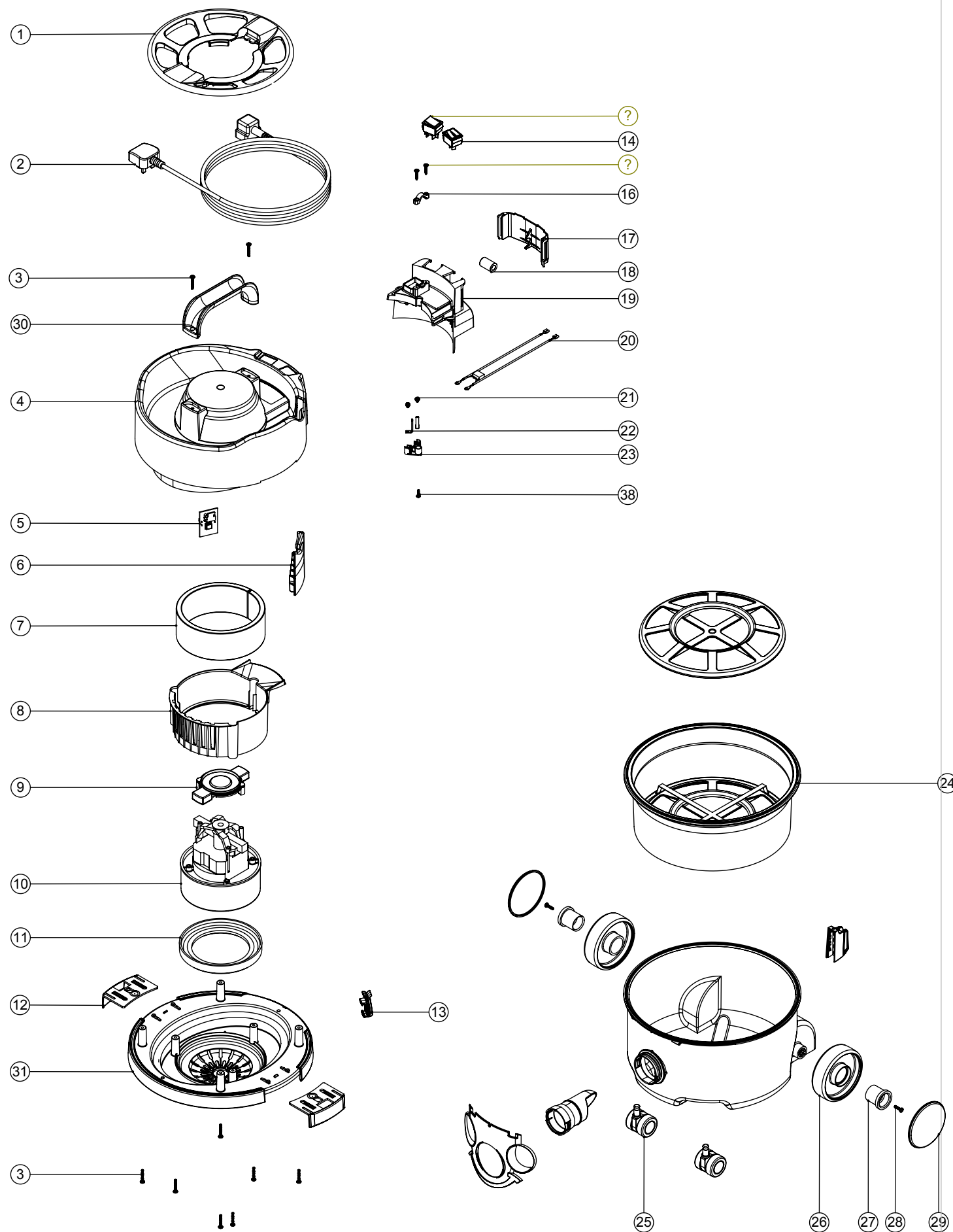
POS	ITEM NO:	DESCRIPTION	COMMENTS
1	237101	NSP / PSP CABLE TIDY (GREEN)	
2	236009	10.0M X 1.00MM X 2 CORE CABLE (SOCKET + PLUG) UK	
	236013	10.0M X 1.00MM X 2 CORE CABLE (SOCKET + PLUG) EURO	
	236017	10.0M X 1.00MM X 2 CORE CABLE (SOCKET + PLUG) SWISS	
	236021	10.0M X 1.00MM X 2 CORE CABLE (SOCKET + PLUG) SOUTH AFRICA	
	236025	10.0M X 18AWG X 2 CORE YELLOW CABLE (SOCKET + PLUG) CSA	CSA MACHINES
	236029	10.0M X 1.00MM X 2 CORE CABLE (SOCKET + PLUG) AUSTRALIAN	
3	219104	No8 X 1 INCH LONG POZI PAN PLASTITE SCREW	
4	206451	HANDLE	
5	325922	NSP / PSP TOP MOTOR HOUSING (GREEN) PRINTED BLACK NUMATIC + AUTOSAVE GREEN FLOWER LOGO	
6	208100	AUTOSAVE 2 SPEED CONTROL PCB	
7	237079	CABLE EXIT NPV/NHV	
8	203020	POD SIDE FELT	
9	229621	AIR GUIDE	
10	229614	MOTOR PLATE BI -MATERIAL	
11	205327	240V 2 STAGE THRO FLOW TAPER FAN ECO MOTOR (DL2804ET) TCO	
	205326	220V 2 STAGE THRO FLOW TAPER FAN ECO MOTOR (DL2802ET) TCO	
	205225	120V 2 STAGE THRO FLOW TAPER FAN ECO MOTOR (DL21101ET) TCO	
12	227882	BOTTOM MOTOR GASKET	
13	229715	TOGGLE (TWIN SHOT)	
14	229426	HENRY CLIPHOLDER	
15	229618	BOTTOM MOTOR HOUSING (TWIN-SHOT)	
16	220243	BLACK/GREEN ROCKER SWITCH	
17	221102	RED MOMENTARY ROCKER SWITCH (BLACK BODY / RED ILLUMINATION WINDOW)	
18	219107	No6 X 5/8 INCH LONG POZI PAN PLASTITE SCREW	
19	227564	PLUG LOCATION CLAMP	
20	229623	SWITCH COVER	
	229738	SWITCH COVER V2	CSA MACHINES
21	230097	AXIAL FERRITE BEAD	
22	237076	SWITCH HOUSING PLUGGED	
	237172	SWITCH HOUSING PLUGGED V2	CSA MACHINES
23	230170	SUPPRESSOR WIRE ASSY NPV/NHV	
24	219090	M4 X 8MM LONG POZI PAN SEMS SCREW	
25	206562	CONTACT PIN	
26	325912	NPV / NHV TERMINAL BLOCK PLUS INSERTS	
27	219318	No6 X 1/2 INCH LONG POZI PAN PLASTITE SCREW	
28	207109	12 INCH FILTER (DOUBLE BOTTOM) 160GRM SMS	
29	227363	BAG CONNECTOR	180 MACHINES
	229768	BAG CONNECTOR (2006)	200 MACHINES
30	227490	180 DRUM - GREEN	
	227491	180 DRUM PLUS FACE - GREEN	
	225303	NNV/NRV200 GREEN MOULDED DRUM	
	225193	NNV/NRV200 GREEN MOULDED DRUM PLUS FACE	
31	237398	GREEN THREADED NECK	180 MACHINES ONLY
32	204000	40MM PU-TYRED BLACK TWIN WHEEL CASTOR	
33	227640	2 SHOT WHEEL ASSEMBLY	
34	227868	WHEEL HUB FOR 2 SHOT WHEEL	
35	219105	No8 X 5/8 INCH LONG POZI PAN PLASTITE SCREW	
36	227689	GREEN TRIM	

Numatic International Spare Parts

Model No: NSP180A / 200A GREEN EXPLODED DRAWING

NB: FOR WIRING SEE DRAWING: DRW-4550

234770
DRAWING: DRW-5140 ISS:A02
30/11/2015



Numatic International Spare Parts

Model No: NSP180A / 200A GREEN EXPLODED DRAWING

POS	ITEM NO:	DESCRIPTION	COMMENTS
1	237101	NSP / PSP CABLE TIDY (GREEN)	
2	236009	10.0M X 1.00MM X 2 CORE CABLE (SOCKET + PLUG) UK	
	236013	10.0M X 1.00MM X 2 CORE CABLE (SOCKET + PLUG) EURO	
	236017	10.0M X 1.00MM X 2 CORE CABLE (SOCKET + PLUG) SWISS	
	236021	10.0M X 1.00MM X 2 CORE CABLE (SOCKET + PLUG) SOUTH AFRICA	
	236025	10.0M X 18AWG X 2 CORE YELLOW CABLE (SOCKET + PLUG) CSA	CSA MACHINES
	236029	10.0M X 1.00MM X 2 CORE CABLE (SOCKET + PLUG) AUSTRALIAN	
3	219104	No8 X 1 INCH LONG POZI PAN PLASTITE SCREW	
4	325922	NSP / PSP TOP MOTOR HOUSING (GREEN) PRINTED BLACK NUMATIC + AUTOSAVE GREEN FLOWER LOGO	
5	208100	AUTOSAVE 2 SPEED CONTROL PCB	
6	237079	CABLE EXIT NPV/NHV	
7	203020	POD SIDE FELT	
8	229621	AIR GUIDE	
9	229614	MOTOR PLATE BI -MATERIAL	
10	205327	240V 2 STAGE THRO FLOW TAPER FAN ECO MOTOR (DL2804ET) TCO	
	205326	220V 2 STAGE THRO FLOW TAPER FAN ECO MOTOR (DL2802ET) TCO	
	205225	120V 2 STAGE THRO FLOW TAPER FAN ECO MOTOR (DL21101ET) TCO	
11	227882	BOTTOM MOTOR GASKET	
12	229715	TOGGLE (TWIN SHOT)	
13	229426	HENRY CLIPHOLDER	
14	221102	RED MOMENTARY ROCKER SWITCH (BLACK BODY / RED ILLUMINATION WINDOW)	
15	219107	No6 X 5/8 INCH LONG POZI PAN PLASTITE SCREW	
16	227564	PLUG LOCATION CLAMP	
17	229623	SWITCH COVER	
	229738	SWITCH COVER V2	CSA MACHINES
18	230097	AXIAL FERRITE BEAD	
19	237076	SWITCH HOUSING PLUGGED	
	237172	SWITCH HOUSING PLUGGED V2	CSA MACHINES
20	230170	SUPPRESSOR WIRE ASSY NPV/NHV	
21	219090	M4 X 8MM LONG POZI PAN SEMS SCREW	
22	206562	CONTACT PIN	
23	325912	NPV / NHV TERMINAL BLOCK PLUS INSERTS	
24	207109	12 INCH FILTER (DOUBLE BOTTOM) 160GRM SMS	
	229768	BAG CONNECTOR (2006)	200 MACHINES
	227491	180 DRUM PLUS FACE - GREEN	
	225303	NNV/NRV200 GREEN MOULDED DRUM	
	225193	NNV/NRV200 GREEN MOULDED DRUM PLUS FACE	
25	204000	40MM PU-TYRED BLACK TWIN WHEEL CASTOR	
26	227640	2 SHOT WHEEL ASSEMBLY	
27	227868	WHEEL HUB FOR 2 SHOT WHEEL	
28	219105	No8 X 5/8 INCH LONG POZI PAN PLASTITE SCREW	
29	227689	GREEN TRIM	
30	206451	HANDLE	1
31	237607	BOTTOM MOTOR HOUSING (TWIN-SHOT)	1
32	220243	BLACK/GREEN ROCKER SWITCH	1
33	237119	FRONT FIT BAG CONNECTOR	1
34			1
35	209500	Eco Filter Grid	1
36	237373	DOCK	1
37	325991	PARALLEL SNAP FIT FACE PRINTED	1
38	219318	No6 X 1/2 INCH LONG POZI PAN PLASTITE SCREW	1