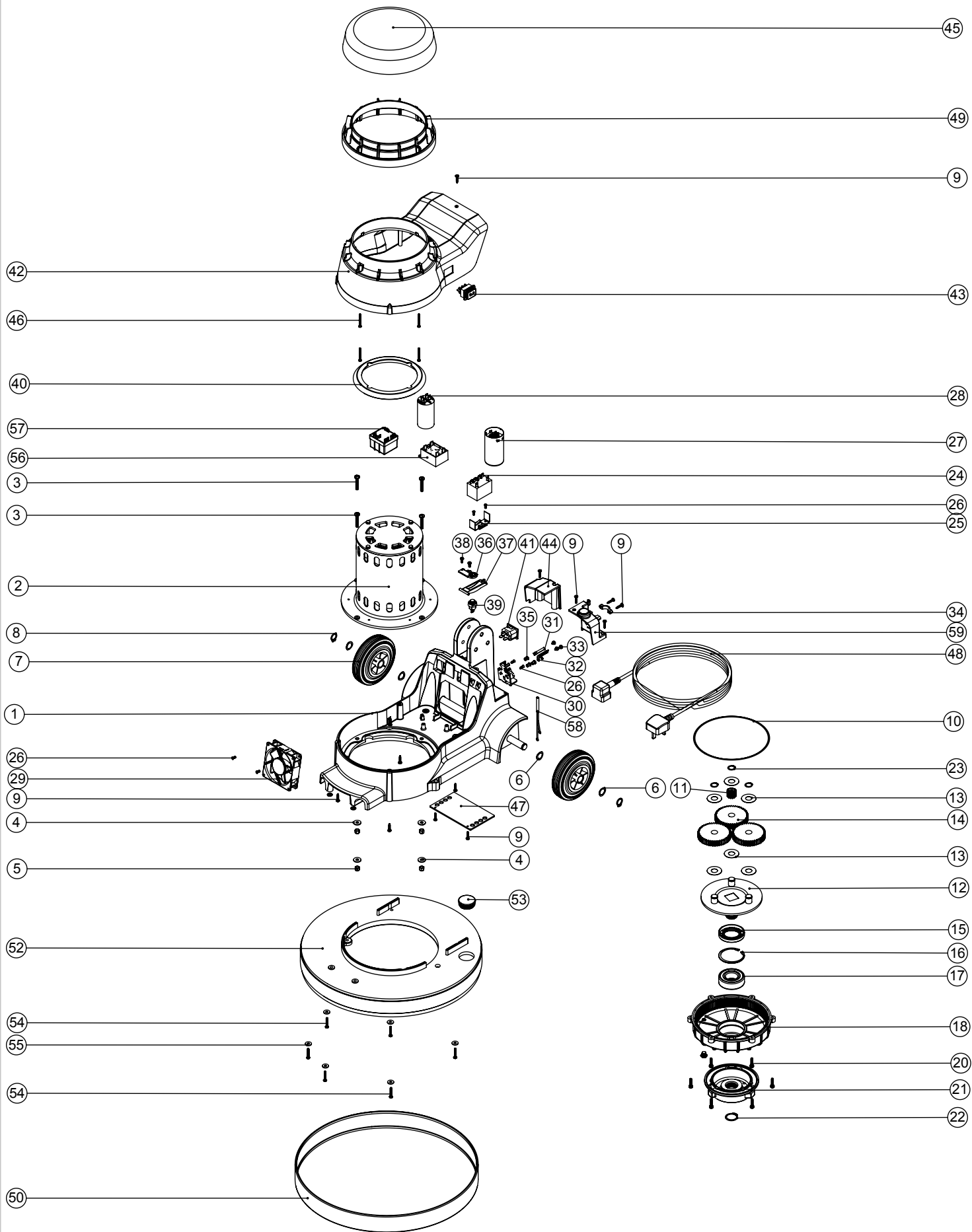


Numatic International Spare Parts
Model No: NRT 1530 BASE ASSEMBLY

234492
 DRAWING: EXP-0923 ISS:A07
 08/10/2007

NB: FOR WIRING SEE DRAWING: WD-0348



Numatic International Spare Parts
Model No: NRT 1530 BASE ASSEMBLY

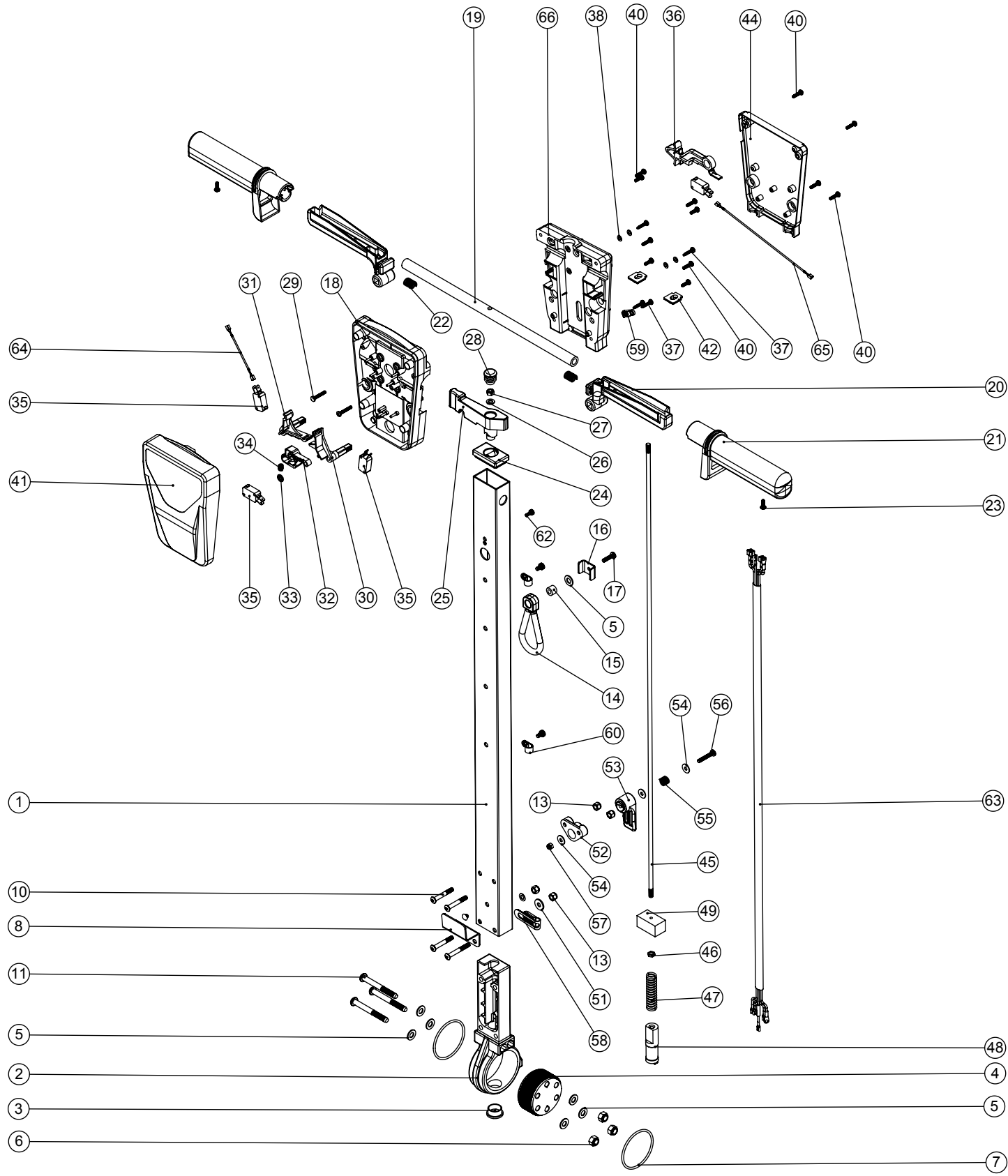
| POS: | ITEM NO: | DESCRIPTION: | COMMENTS: |
|------|----------|--|----------------------------|
| 1 | 338580 | PRINTED GRAPHITE BASE MOULDING SUB ASSEMBLY C/W M8 MULTISERT (SPARE PART) | BOTTOM MOTOR GASKET 227557 |
| 2 | 205102 | 230V / 50HZ (HI-STACK) 2 SPEED MOTOR (12MM SHAFT) | |
| 3 | 219268 | M6 X 35MM LONG POZI PAN SCREW | |
| 4 | 219008 | M6 FORM G WASHER | |
| 5 | 219088 | M6 NYLON INSERT NUT | |
| 6 | 219219 | 21.5MM X 16.3MM WAVE WASHER | |
| 7 | 229060 | WHEEL GREY BLACK HUB | |
| 8 | 229051 | EXTERNAL CIRCLIP | |
| 9 | 219914 | NO6 X 5/8 INCH LONG POZI-PAN PLASTITE STAINLESS STEEL SCREW | |
| 10 | 230001 | V OIL SEAL | |
| 11 | 230027 | 12 TOOTH PINION GEAR (STANDARD SPEED) | |
| 12 | 230291 | PLANET CARRIER & PIN ASSEMBLY (50HZ STANDARD SPEED) | |
| 13 | 230215 | 35MM X 15 I/D ALUMINIUM WASHER | |
| 14 | 230013 | 48 TOOTH SPUR GEAR(STANDARD SPEED 50/60HZ) | |
| 15 | 230069 | 10MM DOUBLE LIP OIL SEAL | |
| 16 | 230200 | 62MM INTERNAL CIRCLIP | |
| 17 | 230094 | 62MM O/D X 30MM I/D X 20MM BEARING (WITH SEALS) | |
| 18 | 230060 | BOTTOM PLATE WITH MACHINED GEAR TEETH | |
| 19 | 219801 | GEAR BOX OIL PLUG | |
| 20 | 219820 | M5 X 20MM LONG SOCKET CAP SCREW | |
| 21 | 230059 | DIE CAST CHUCK | |
| 22 | 230048 | 26MM EXTERNAL CIRCLIP | |
| 23 | 230015 | 15MM EXTERNAL CIRCLIP | |
| 24 | 206575 | 240V / 25A RELAY | |
| 25 | 206500 | RELAY BRACKET | |
| 26 | 219651 | M4 X 10MM LONG POZI PAN THREAD CUTTING SCREW | |
| 27 | 205183 | MOTOR START CAPACITOR 130MF + 25% 280V C/W RESISTOR & M8 STUD | |
| 28 | 205077 | 450V/16 MFD MOTOR RUN CAPACITOR | |
| 29 | 205072 | PROCESSED 12V DC BRUSHLESS FAN | |
| 30 | 216288 | TERMINAL BLOCK | |
| 31 | 206562 | CONTACT PIN | |
| 32 | 206563 | EARTH CONTACT PIN | |
| 33 | 219090 | M4 X 8MM LONG POZI PAN SEMS SCREW | |
| 34 | 216290 | CABLE CLAMP | |
| 35 | 219009 | M4 BRASS TAPPEX INSERT | |
| 36 | 216293 | LEVER PLATE | |
| 37 | 216292 | CUT OUT LEVER | |
| 38 | 219677 | No4 X 10MM LONG POZI PAN PLASTITE SCREW | |
| 39 | 229454 | HANDLE SWITCH | |
| 40 | 227556 | TOP MOTOR GASKET | |
| 41 | 220964 | APPLIANCE OUTPUT SOCKET | |
| 42 | 303517 | MODIFIED FLOOR MACHINE MIDDLE SECTION MOULDING | |
| 43 | 229465 | DOUBLE POLE CHANGE OVER RED ROCKER SWITCH | |
| 44 | 216291 | OUTPUT COVER | |
| 45 | 328112 | NU SPEED TOP SECTION MOULDING PRINTED | |
| 46 | 219848 | NO6 X 1 3/8 INCH LONG POZI PAN SCREW | |
| 47 | 329228 | GAURD PLATE | |
| 48 | 236072 | MAINS CABLE (15.0 METERS / 1.5MM / 3 CORE CABLE / SOCKET + UK PLUG) | |
| 48 | 236136 | 15.0MT X 1.5MM X 3 CORE YELLOW CABLE (SOCKET + PLUG) EURO | OPTIONAL CABLE |
| 48 | 236087 | MAINS CABLE (15.0 METERS / 1.5MM / 3 CORE CABLE / SOCKET + AUSTRALIAN PLUG) | OPTIONAL CABLE |
| 48 | 236078 | MAINS CABLE (15.0 METERS / 1.5MM / 3 CORE CABLE / SOCKET + SWISS PLUG) | OPTIONAL CABLE |
| 48 | 236081 | MAINS CABLE (15.0 METERS / 1.5MM / 3 CORE CABLE / SOCKET + SOUTH AFRICAN PLUG) | OPTIONAL CABLE |
| 49 | 229486 | NS TALL MOTOR INSERT MOULDING | |
| 50 | 206478 | GREY MEDIUM BUFFER RING | |
| 51 | 219493 | M6 NYLON WASHER | |
| 52 | 329110 | GREY SANDING DECK | |
| 53 | 229400 | BLACK END STOP | |
| 54 | 219369 | No8 X 1 INCH LONG POZI PAN STAINLESS STEEL PLASTITE SCREW | |
| 55 | 219005 | M5 FORM G WASHER | |
| 56 | 206753 | UNIVERSAL POWER SUPPLY | |
| 57 | 206824 | 230V 2 SPEED VOLTAGE RELAY | |
| 58 | 321193 | AC LED WITH TERMINALS | |
| 59 | 206865 | 16A INPUT COVER C/W WINDOW PLUG | |

Numatic International Spare Parts

Model No: NR HANDLE ASSEMBLY

NB: FOR WIRING SEE DRAWING: WD-0345

234514
DRAWING:EXP-0943 ISS:A03
01/10/2007



Numatic International Spare Parts

Model No: NR HANDLE ASSEMBLY

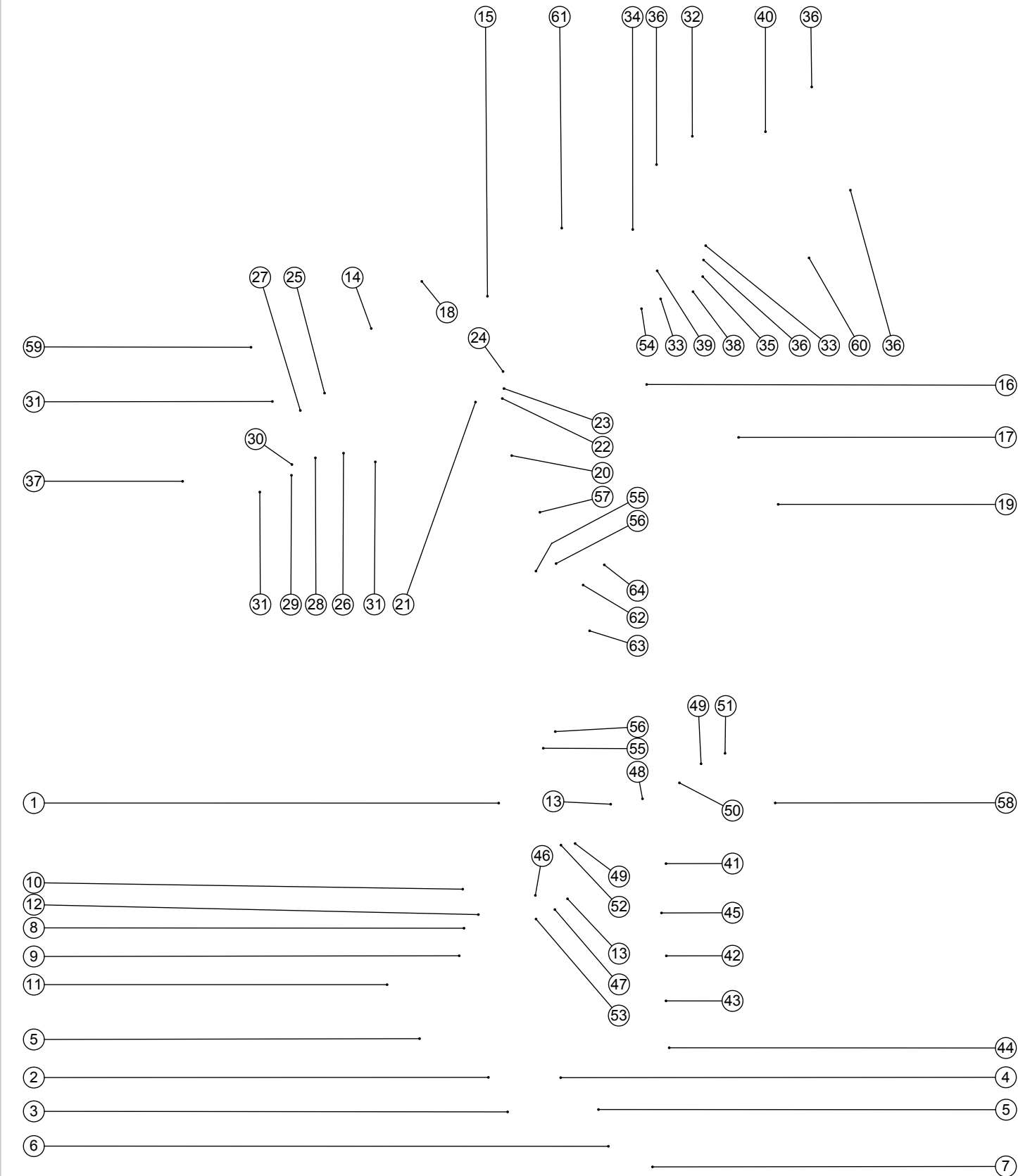
| POS: | ITEM NO: | DESCRIPTION: | COMMENTS: |
|------|----------|---|-----------|
| 1 | 429096 | LOLINE HANDLE TUBE PAINTED (830) | |
| 2 | 229081 | HANDLE CASTING MACHINED | |
| 3 | 229099 | 25MM DIA HOLE PLUG | |
| 4 | 229482 | DUAL SETTING ADJUSTMENT GEAR | |
| 5 | 219010 | M8 FORM A WASHER | |
| 6 | 219078 | M8 NYLON INSERT NUT | |
| 7 | 219254 | O RING 3MM DIA X 60MM I/D | |
| 8 | 329000 | HANDLE BRACKET | |
| 9 | 219881 | M6 X 45MM SOCKET BUTTON HEAD SCREW | |
| 10 | 219807 | M6 X 40MM LONG SOCKET BUTTON HEAD BOLT | |
| 11 | 219806 | M8 X 70MM LONG SOCKET BUTTON HEAD BOLT | |
| 12 | 229009 | BLANKING PLUG | |
| 13 | 219088 | M6 NYLON INSERT NUT | |
| 14 | 226008 | STRESS RELIEF | |
| 15 | 226006 | SPACER (BLACK) | |
| 16 | 329231 | STRESS RELIEF BRACKET | |
| 17 | 219054 | M5 X 20MM LONG POZI PAN SCREW | |
| 18 | 227576 | FRONT INNER HALF MOULDING | |
| 19 | 338269 | CROSS TUBE | |
| 20 | 227581 | TRIGGER MOULDING | |
| 21 | 227580 | HAND GRIP MOULDING | |
| 22 | 219803 | TRIGGER COMPRESSION SPRING | |
| 23 | 219270 | No8 X 1/2 INCH LONG POZI PAN SELF TAP SCREW | |
| 24 | 227582 | HANDLE PLUG MOULDING | |
| 25 | 227583 | ADJUSTMENT LEVER MOULDING | |
| 26 | 219493 | M6 NYLON WASHER | |
| 27 | 219642 | M6 STAINLESS STEEL NYLON INSERT NUT | |
| 28 | 20638V | CSP-302 BLACK TUBE END STOP | |
| 29 | 219811 | NO8 X 1 INCH LONG POZI-PAN SELF TAP SCREW | |
| 30 | 227585 | LEFT HAND SWITCH OPERATING LEVER MOULDING | |
| 31 | 227586 | RIGHT HAND SWITCH OPERATING LEVER MOULDING | |
| 32 | 227587 | CENTRE SWITCH OPERATING LEVER MOULDING | |
| 33 | 219805 | 4MM SPIREFIX | |
| 34 | 219804 | SWITCH COMPRESSION SPRING | |
| 35 | 229483 | SNAP ACTION SWITCH | |
| 36 | 227584 | INTERLOCK LEVER MOULDING | |
| 37 | 219107 | No6 X 5/8 INCH LONG POZI PAN PLASTITE SCREW | |
| 38 | 219206 | M4 FORM A WASHER | |
| 39 | 219101 | No8 X 1/2 INCH LONG POZI PAN PLASTITE SCREW | |
| 40 | 219105 | No8 X 5/8 INCH LONG POZI PAN PLASTITE SCREW | |
| 41 | 318959 | PRINTED FRONT COVER MOULDING | |
| 42 | 329539 | MODIFIED BLANKING PLATE | |
| 43 | 227666 | BLANKING PLUG | |
| 44 | 318968 | PRINTED REAR COVER MOULDING | |
| 45 | 229484 | 840MM HANDLE LOCKING ROD | |
| 46 | 219099 | M6 HALF NUT | |
| 47 | 229138 | SPRING | |
| 48 | 229073 | GEAR LOCKING PIN | |
| 49 | 229030 | ANTI VIBRATION PAD | |
| 50 | 219007 | M6 FORM B WASHER | |
| 51 | 219008 | M6 FORM G WASHER | |
| 52 | 227806 | CABLE RELEASE BASE MOULDING | |
| 53 | 227807 | CABLE RELEASE TOP MOULDING | |
| 54 | 219644 | M5 FORM G STAINLESS STEEL WASHER | |
| 55 | 206599 | SPRING (REF:C5514370) | |
| 56 | 219720 | M5 X 30MM LONG STAINLESS STEEL POZI PAN SCREW | |
| 57 | 219076 | M5 NYLON INSERT NUT | |
| 58 | 229139 | P-CLIP | |
| 59 | 229669 | LOLINE HANDLE CABLE CLAMP | |
| 60 | 219393 | P CLIP | |
| 61 | 219047 | M5 X 10MM LONG POZI PAN SEMS SCREW | |
| 62 | 219471 | M4 X 12MM LONG POZI PAN SEMS SCREW | |
| 63 | 230134 | NR 5 CORE LOOM ASSEMBLY (UK/EURO) | |
| 64 | 321247 | 60MM LONG BLUE LINK WIRE | |
| 65 | 321248 | 190MM LONG BLUE LINK WIRE | |
| 66 | 227577 | REAR INNER HALF MOULDING | |

Numatic International Spare Parts

Model No: NR HANDLE ASSEMBLY EXPLODED DRAWING (EXP-0943)

Internal Code: 234514
 DRAWING: EXP-0943 ISS:A08
 PRO 26/01/2016

NB: FOR WIRING SEE DRAWING: WD-0345



Numatic International Spare Parts

Model No: NR HANDLE ASSEMBLY EXPLODED DRAWING (EXP-0943)

| ITEM: | PART No: | Description | QTY. |
|-------|----------|--|------|
| 1 | 429096 | LOLINE HANDLE TUBE PAINTED (830) | 1 |
| 2 | 229081 | HANDLE CASTING MACHINED | 1 |
| 3 | 229099 | 25MM DIA HOLE PLUG | 1 |
| 4 | 229482 | DUAL SETTING ADJUSTMENT GEAR | 1 |
| 5 | 219010 | M8 FORM A WASHER | 6 |
| 6 | 219078 | NUT.M8.NYLON INSERT.Z/PL | 3 |
| 7 | 219254 | O RING 3MM DIA X 60MM I/D | 2 |
| 8 | 329000 | HANDLE BRACKET | 1 |
| 9 | 219881 | M6 X 45MM SOCKET BUTTON HEAD SCREW | 1 |
| 10 | 219807 | M6 X 40MM LONG SOCKET BUTTON HEAD BOLT | 3 |
| 11 | 219806 | M8 X 70MM LONG SOCKET BUTTON HEAD BOLT | 3 |
| 12 | 229009 | BLANKING PLUG | 1 |
| 13 | 219088 | M6 NYLON INSERT NUT | 4 |
| 14 | 227576 | FRONT INNER HALF MOULDING | 1 |
| 15 | 338269 | CROSS TUBE | 1 |
| 16 | 227581 | TRIGGER MOULDING | 2 |
| 17 | 227580 | HAND GRIP MOULDING | 2 |
| 18 | 219803 | TRIGGER COMPRESSION SPRING | 2 |
| 19 | 219270 | No8 X 1/2 INCH LONG POZI PAN SELF TAP SCREW | 2 |
| 20 | 227582 | HANDLE PLUG MOULDING | 1 |
| 21 | 227583 | ADJUSTMENT LEVER MOULDING | 1 |
| 22 | 219493 | M6 NYLON WASHER | 1 |
| 23 | 219642 | M6 STAINLESS STEEL NYLON INSERT NUT | 1 |
| 24 | 20638V | 19MM BLACK TUBE END STOP | 1 |
| 25 | 219811 | NO8 X 1 INCH LONG POZI-PAN SELF TAP SCREW | 2 |
| 26 | 227585 | LEFT HAND SWITCH OPERATING LEVER MOULDING | 1 |
| 27 | 227586 | RIGHT HAND SWITCH OPERATING LEVER MOULDING | 1 |
| 28 | 227587 | CENTRE SWITCH OPERATING LEVER MOULDING | 1 |
| 29 | 219805 | 4MM SPIREFIX | 1 |
| 30 | 219804 | SWITCH COMPRESSION SPRING | 1 |
| 31 | 229483 | SNAP ACTION SWITCH | 4 |
| 32 | 227584 | INTERLOCK LEVER MOULDING | 1 |
| 33 | 219107 | No6 X 5/8 INCH LONG POZI PAN PLASTITE SCREW | 4 |
| 34 | 219206 | M4 FORM A WASHER | 4 |
| 35 | 219101 | No8 X 1/2 INCH LONG POZI PAN PLASTITE SCREW | 4 |
| 36 | 219105 | No8 X 5/8 INCH LONG POZI PAN PLASTITE SCREW | 8 |
| 37 | 318959 | PRINTED FRONT COVER MOULDING | 1 |
| 38 | 329539 | MODIFIED BLANKING PLATE | 1 |
| 39 | 227666 | BLANKING PLUG | 1 |
| 40 | 318968 | PRINTED REAR COVER MOULDING | 1 |
| 41 | 229484 | 840MM HANDLE LOCKING ROD | 1 |
| 42 | 219099 | M6 HALF NUT | 1 |
| 43 | 229138 | SPRING | 1 |
| 44 | 229073 | GEAR LOCKING PIN | 1 |
| 45 | 229030 | ANTI VIBRATION PAD | 1 |
| 46 | 219007 | M6 FORM B WASHER | 1 |
| 47 | 219008 | M6 FORM G WASHER | 1 |
| 48 | 227807 | CABLE RELEASE TOP MOULDING | 1 |
| 49 | 219644 | M5 FORM G STAINLESS STEEL WASHER | 3 |
| 50 | 206599 | SPRING (REF:C5514370) | 1 |
| 51 | 219720 | M5 X 30MM LONG STAINLESS STEEL POZI PAN SCREW | 1 |
| 52 | 219076 | M5 NYLON INSERT NUT | 1 |
| 53 | 229139 | P-CLIP | 1 |
| 54 | 229669 | LOLINE HANDLE CABLE CLAMP | 1 |
| 55 | 219393 | P CLIP | 2 |
| 56 | 219047 | M5 X 10MM LONG POZI PAN SEMS SCREW | 2 |
| 57 | 219471 | M4 X 12MM LONG POZI PAN SEMS SCREW | 1 |
| 58 | 230134 | NR 5 CORE LOOM ASSEMBLY (UK/EURO) | 1 |
| 59 | 321247 | 60MM LONG BLUE LINK WIRE | 1 |
| 60 | 321248 | 190MM LONG BLUE LINK WIRE | 1 |
| 61 | 227577 | REAR INNER HALF MOULDING | 1 |
| 62 | 219743 | CABLE CLEAT | 1 |
| 63 | 902312 | CABLE STRESS RELIEF | 1 |
| 64 | 291133 | M5 X 20MM LONG STAINLESS STEEL POZI PAN SEMS SCREW | 1 |