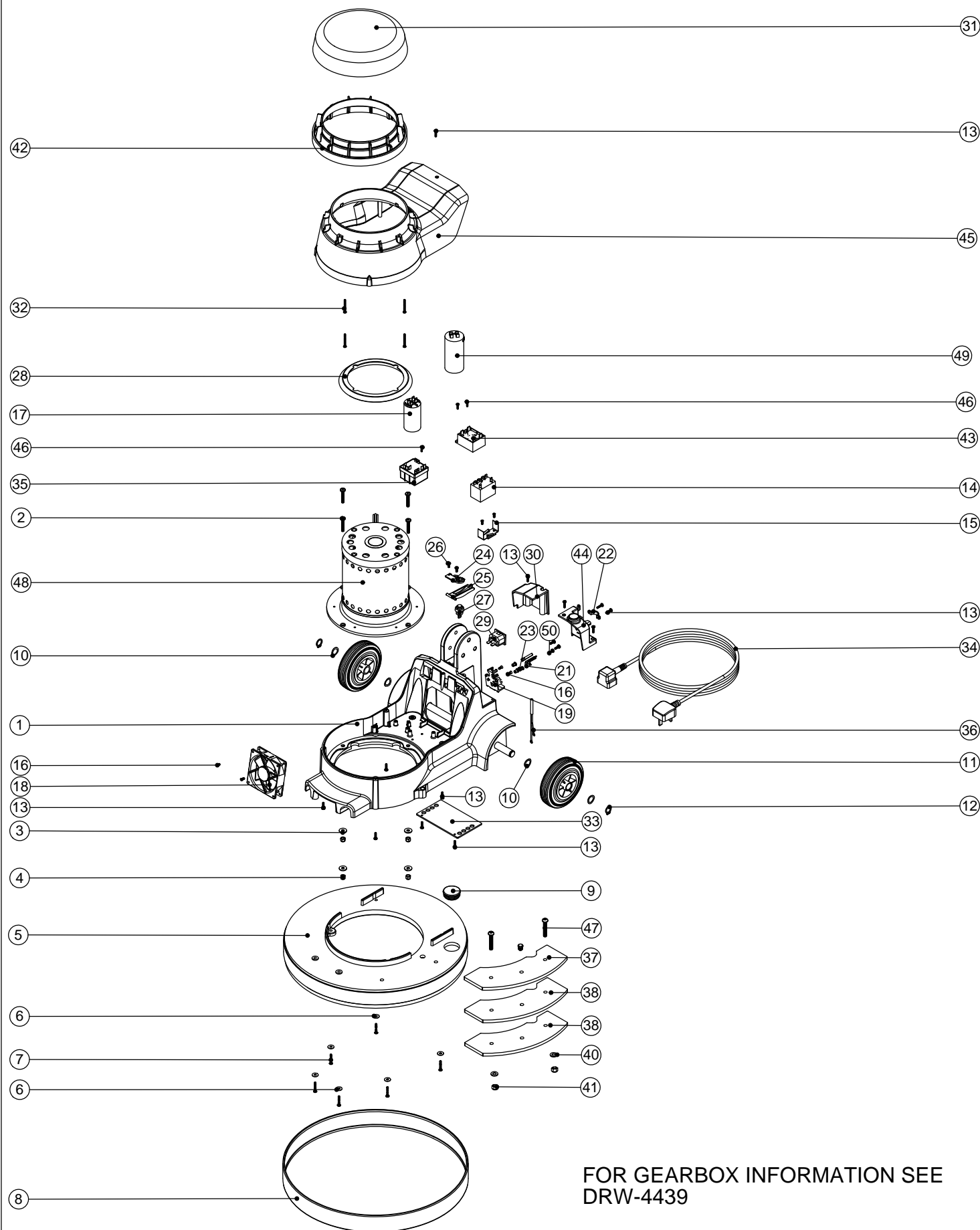


Numatic International Spare Parts

Model No: NRS 450 BASE ASSEMBLY EXPLODED DRAWING (EXP-0920)

234489
DRAWING: EXP-0920 ISS:A14
13/05/2010

NB: FOR WIRING SEE DRAWING: WD-0345



Numatic International Spare Parts

Model No: NRS 450 BASE ASSEMBLY EXPLODED DRAWING (EXP-0920)

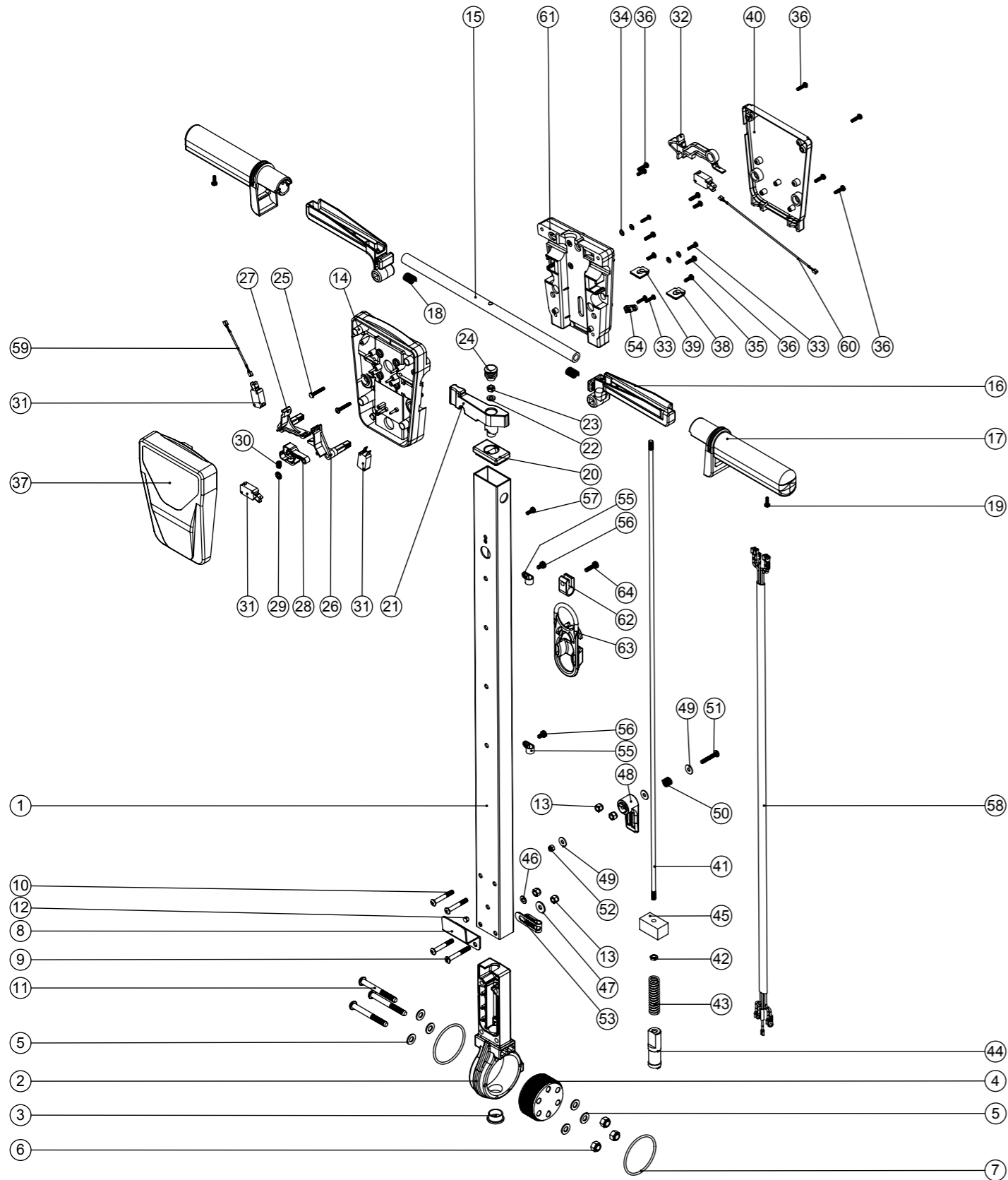
POS:	ITEM NO:	DESCRIPTION:	COMMENTS:
1	338580	PRINTED GRAPHITE BASE MOULDING SUB ASSEMBLY C/W M8 MULTISERT	
2	219268	M6 X 35MM LONG POZI PAN SCREW	
3	219008	M6 FORM G WASHER	
4	219088	M6 NYLON INSERT NUT	
5	329456	MODIFIED MEDIUM GREY RING MOULDING	
6	219644	M5 FORM G STAINLESS STEEL WASHER	
7	219369	No8 X 1 INCH LONG POZI PAN STAINLESS STEEL PLASTITE SCREW	
8	206478	GREY MEDIUM BUFFER RING	
9	229400	BLACK END STOP	
10	219219	21.5MM X 16.3MM WAVE WASHER	
11	229060	WHEEL GREY BLACK HUB	
12	229051	EXTERNAL CIRCLIP	
13	219914	NO6 X 5/8 INCH LONG POZI-PAN PLASTITE STAINLESS STEEL SCREW	
14	206575	240V / 25A RELAY	
15	206500	RELAY BRACKET	
16	219651	M4 X 10MM LONG POZI PAN THREAD CUTTING SCREW	
17	220876	20 MFD MOTOR RUN CAPACITOR (450V)	
18	205072	PROCESSED 12V DC BRUSHLESS FAN	
19	216288	TERMINAL BLOCK	
20	206562	CONTACT PIN	
21	206563	EARTH CONTACT PIN	
22	216290	CABLE CLAMP	
23	219009	M4 BRASS TAPPEX INSERT	
24	216293	LEVER PLATE	
25	216292	CUT OUT LEVER	
26	219677	No4 X 10MM LONG POZI PAN PLASTITE SCREW	
27	229454	HANDLE SWITCH	
28	227556	TOP MOTOR GASKET	
29	220964	APPLIANCE OUTPUT SOCKET	
30	216291	OUTPUT COVER	
31	328112	NU SPEED TOP SECTION MOULDING PRINTED	
32	219848	NO6 X 1 3/8 INCH LONG POZI PAN SCREW	
33	329228	GAURD PLATE	
34	236072	MAINS CABLE (15.0 METERS / 1.5MM / 3 CORE CABLE / SOCKET + UK PLUG)	
35	206823	230V SINGLE SPEED VOLTAGE RELAY	
36	321193	AC LED WITH TERMINALS	
37	429053	WEIGHTED DECK SIDE PLATE PAINTED SILVER GREY	
38	329235	WEIGHTED DECK SIDE PLATE	
39	206678	12MM END STOP	
40	219010	M8 FORM A WASHER	
41	219078	M8 NYLON INSERT NUT	
42	229486	TALL MOTOR INSERT MOULDING	
43	206753	UNIVERSAL POWER SUPPLY	
44	206865	16A INPUT COVER C/W WINDOW PLUG	
45	229441	FLOOR MACHINE MIDDLE SECTION MOULDING	
46	219318	No6 X 1/2 INCH LONG POZI PAN PLASTITE SCREW	
47	219822	M8 X 45MM LONG SOCKET BUTTON STAINLESS STEEL HEAD BOLT	
48	205222	COMBINED INDUCTION MOTOR 2POLE 220-240V 50Hz	
49	208265	MOTOR START CAPACITOR 100 MFD C/W RESISTOR & M8 STUD	
50	219471	M4 X 12MM LONG POZI PAN SEMS SCREW	

Numatic International Spare Parts

Model No: NR HANDLE ASSEMBLY EXPLODED DRAWING (EXP-0943)

Internal Code: 234514
 DRAWING: EXP-0943 ISS:A08
 PRO 26/01/2016

NB: FOR WIRING SEE DRAWING: WD-0345



Numatic International Spare Parts

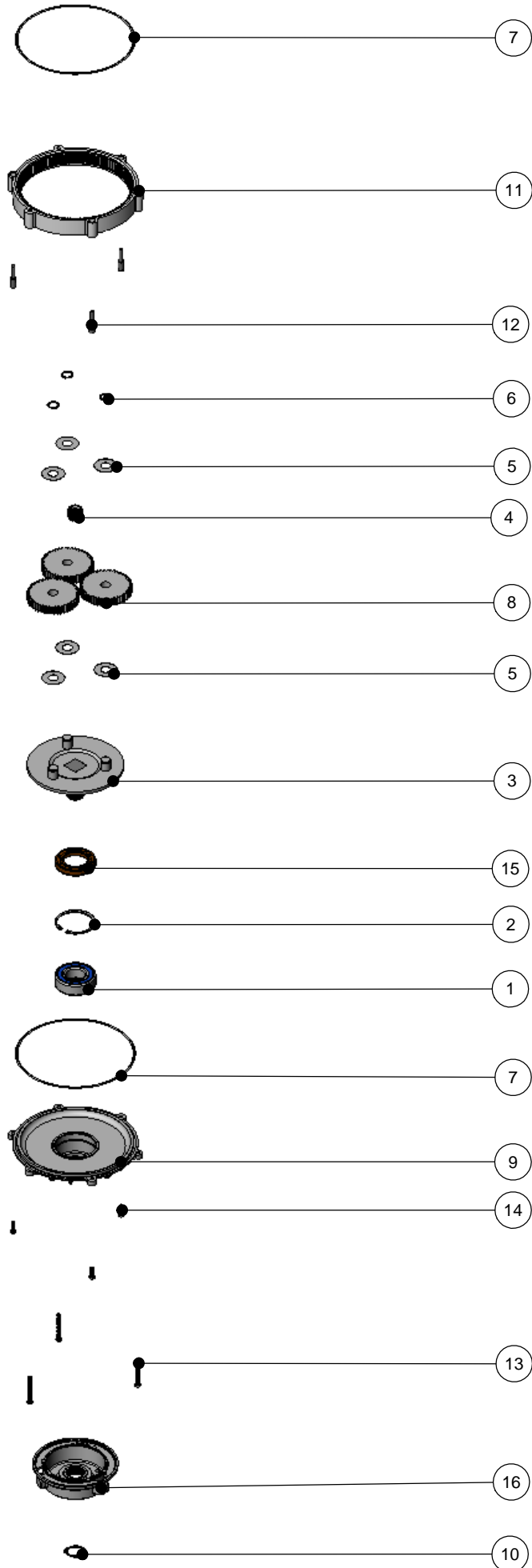
Model No: NR HANDLE ASSEMBLY EXPLODED DRAWING (EXP-0943)

ITEM:	PART No:	Description	QTY.
1	429096	LOLINE HANDLE TUBE PAINTED (830)	1
2	229081	HANDLE CASTING MACHINED	1
3	229099	25MM DIA HOLE PLUG	1
4	229482	DUAL SETTING ADJUSTMENT GEAR	1
5	219010	M8 FORM A WASHER	6
6	219078	NUT.M8.NYLON INSERT.Z/PL	3
7	219254	O RING 3MM DIA X 60MM I/D	2
8	329000	HANDLE BRACKET	1
9	219881	M6 X 45MM SOCKET BUTTON HEAD SCREW	1
10	219807	M6 X 40MM LONG SOCKET BUTTON HEAD BOLT	3
11	219806	M8 X 70MM LONG SOCKET BUTTON HEAD BOLT	3
12	229009	BLANKING PLUG	1
13	219088	M6 NYLON INSERT NUT	4
14	227576	FRONT INNER HALF MOULDING	1
15	338269	CROSS TUBE	1
16	227581	TRIGGER MOULDING	2
17	227580	HAND GRIP MOULDING	2
18	219803	TRIGGER COMPRESSION SPRING	2
19	219270	No8 X 1/2 INCH LONG POZI PAN SELF TAP SCREW	2
20	227582	HANDLE PLUG MOULDING	1
21	227583	ADJUSTMENT LEVER MOULDING	1
22	219493	M6 NYLON WASHER	1
23	219642	M6 STAINLESS STEEL NYLON INSERT NUT	1
24	20638V	19MM BLACK TUBE END STOP	1
25	219811	NO8 X 1 INCH LONG POZI-PAN SELF TAP SCREW	2
26	227585	LEFT HAND SWITCH OPERATING LEVER MOULDING	1
27	227586	RIGHT HAND SWITCH OPERATING LEVER MOULDING	1
28	227587	CENTRE SWITCH OPERATING LEVER MOULDING	1
29	219805	4MM SPIREFIX	1
30	219804	SWITCH COMPRESSION SPRING	1
31	229483	SNAP ACTION SWITCH	4
32	227584	INTERLOCK LEVER MOULDING	1
33	219107	No6 X 5/8 INCH LONG POZI PAN PLASTITE SCREW	4
34	219206	M4 FORM A WASHER	4
35	219101	No8 X 1/2 INCH LONG POZI PAN PLASTITE SCREW	4
36	219105	No8 X 5/8 INCH LONG POZI PAN PLASTITE SCREW	8
37	318959	PRINTED FRONT COVER MOULDING	1
38	329539	MODIFIED BLANKING PLATE	1
39	227666	BLANKING PLUG	1
40	318968	PRINTED REAR COVER MOULDING	1
41	229484	840MM HANDLE LOCKING ROD	1
42	219099	M6 HALF NUT	1
43	229138	SPRING	1
44	229073	GEAR LOCKING PIN	1
45	229030	ANTI VIBRATION PAD	1
46	219007	M6 FORM B WASHER	1
47	219008	M6 FORM G WASHER	1
48	227807	CABLE RELEASE TOP MOULDING	1
49	219644	M5 FORM G STAINLESS STEEL WASHER	3
50	206599	SPRING (REF:C5514370)	1
51	219720	M5 X 30MM LONG STAINLESS STEEL POZI PAN SCREW	1
52	219076	M5 NYLON INSERT NUT	1
53	229139	P-CLIP	1
54	229669	LOLINE HANDLE CABLE CLAMP	1
55	219393	P CLIP	2
56	219047	M5 X 10MM LONG POZI PAN SEMS SCREW	2
57	219471	M4 X 12MM LONG POZI PAN SEMS SCREW	1
58	230134	NR 5 CORE LOOM ASSEMBLY (UK/EURO)	1
59	321247	60MM LONG BLUE LINK WIRE	1
60	321248	190MM LONG BLUE LINK WIRE	1
61	227577	REAR INNER HALF MOULDING	1
62	219743	CABLE CLEAT	1
63	902312	CABLE STRESS RELIEF	1
64	291133	M5 X 20MM LONG STAINLESS STEEL POZI PAN SEMS SCREW	1

Numatic International Spare Parts

Model No: NPR & NR RANGE GEARBOX EXPLODED DRAWING (ALL SPEEDS)

233756
DRAWING: DRW-4439 ISS:A03
31/10/2011



Numatic International Spare Parts

Model No: NPR & NR RANGE GEARBOX EXPLODED DRAWING (ALL SPEEDS)

POS:	ITEM NO:	DESCRIPTION:	COMMENTS:
1	230094	62MM O/D X 30MM I/D X 20MM BEARING (WITH SEALS)	
2	230200	62MM INTERNAL CIRCLIP	
3	230291	PLANET CARRIER & PIN ASSEMBLY (50HZ STANDARD SPEED)	NPR 1515/S & NR 1500S
	230292	PLANET CARRIER & PIN ASSEMBLY (60HZ HIGH SPEED)	NPR 1523/M, NPR1545/X, NR 1500M & NRS450
	230294	PLANET CARRIER & PIN ASSEMBLY (HIGH SPEED)	NPR 1530/H & NR1500H
4	230027	12 TOOTH PINION GEAR (STANDARD SPEED)	NPR 1515/S & NR 1500S
	230025	20 TOOTH PINION GEAR (50HZ MEDIUM/60HZ HIGH SPEED)	NPR 1523/M, NPR1545/X, NR 1500M & NRS450
	230028	24 TOOTH PINION GEAR (HIGH SPEED)	NPR 1530/H & NR1500H
5	230215	35MM X 15 I/D ALUMINIUM WASHER	
6	230015	15MM EXTERNAL CIRCLIP	
7	230001	V OIL SEAL	
8	230013	48 TOOTH SPUR GEAR (STANDARD SPEED 50/60HZ)	NPR 1515/S & NR 1500S
	230026	44 TOOTH SPUR GEAR (50HZ MEDIUM/60HZ HIGH SPEED)	NPR 1523/M, NPR1545/X, NR 1500M & NRS450
	230014	42 TOOTH SPUR GEAR (HIGH SPEED 50HZ)	NPR 1530/H & NR1500H
9	230208	DIE CAST BOTTOM PLATE ASSEMBLY	
10	230048	26MM EXTERNAL CIRCLIP	
11	214115	GEAR BOX MID SECTION	
12	208207	GEARBOX FASTENER WITH SLOT	
13	219706	M5 X 45MM LONG STAINLESS STEEL HEXAGONAL BOLT	
14	219904	M5 X 16MM LONG HEXAGONAL STAINLESS STEEL BOLT	
15	230158	VITON OIL SEAL (BROWN)	
16	330024	DIE CAST CHUCK MACHINED & PROCESSED	