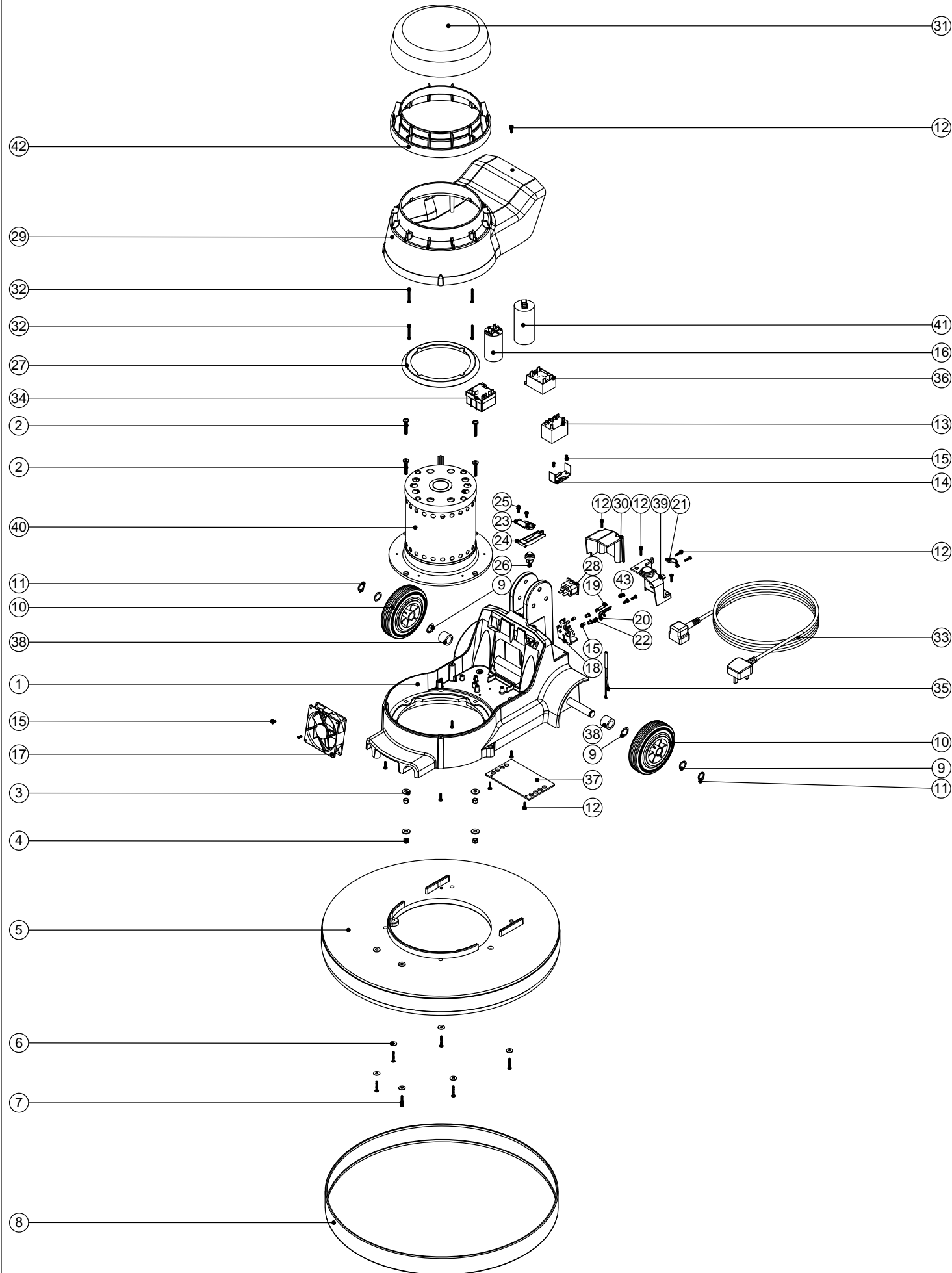


Numatic International Spare Parts

Model No: NRL 1500S BASE ASSEMBLY EXPLODED DRAWING (EXP-0926)

234495
DRAWING: EXP-0926 ISS:A10
06/05/2010

NB: FOR WIRING SEE DRAWING: WD-0345



Numatic International Spare Parts

Model No: NRL 1500S BASE ASSEMBLY EXPLODED DRAWING (EXP-0926)

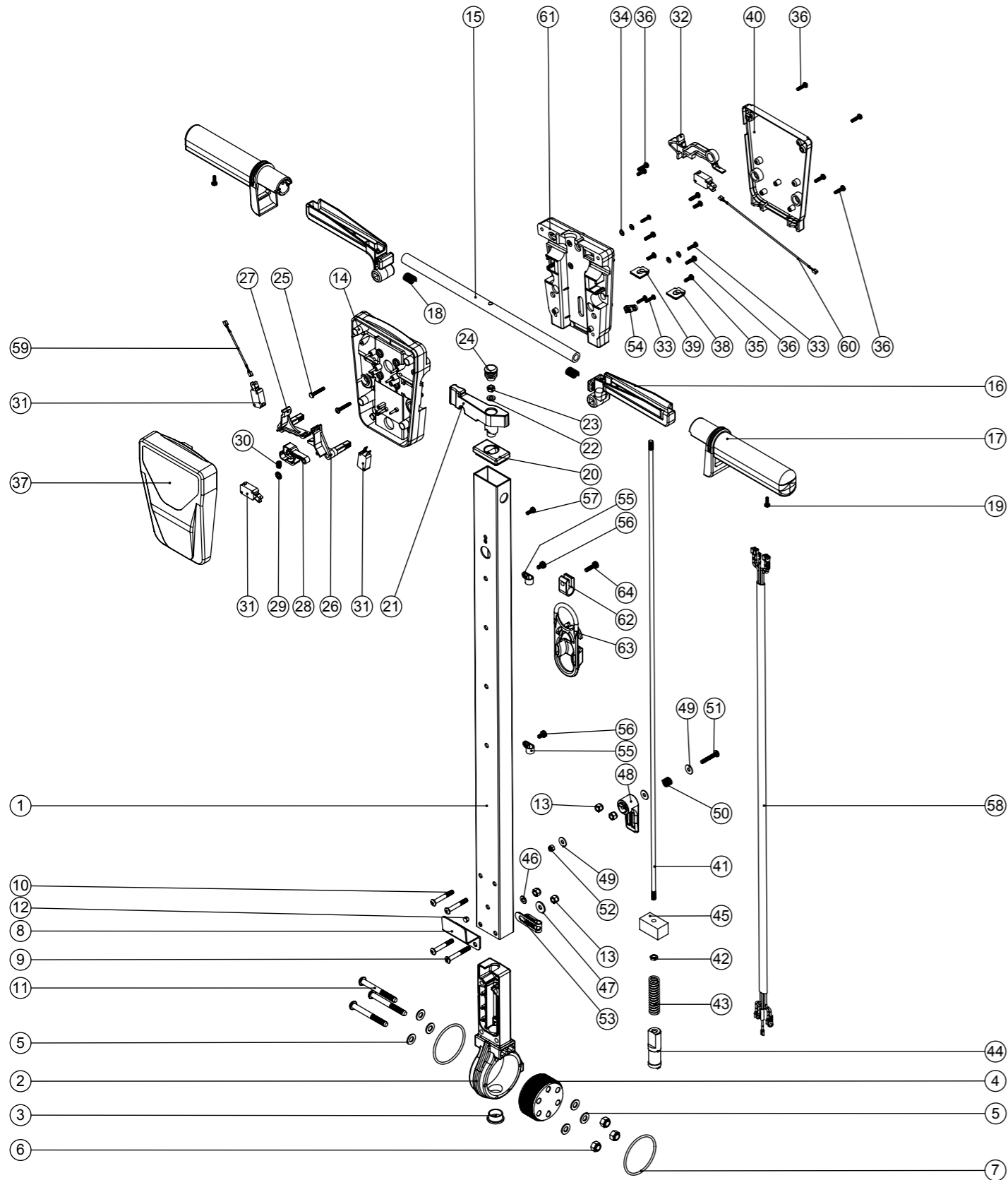
POS:	ITEM NO:	DESCRIPTION:	COMMENTS:
1	329765	GRAPHITE BASE MOULDING SUB ASSEMBLY (PRINTED C/W NUTSERT)	
2	219268	M6 X 35MM LONG POZI PAN SCREW	
3	219008	M6 FORM G WASHER	
4	219088	M6 NYLON INSERT NUT	
5	229763	20 INCH FLOOR MACHINE DECK	
6	219644	M5 FORM G STAINLESS STEEL WASHER	
7	219369	No8 X 1 INCH LONG POZI PAN STAINLESS STEEL PLASTITE SCREW	
8	206846	GREY BUFFER RING 1600 GREY	
9	219219	21.5MM X 16.3MM WAVE WASHER	
10	229060	WHEEL GREY BLACK HUB	
11	229051	EXTERNAL CIRCLIP	
12	219914	NO6 X 5/8 INCH LONG POZI-PAN PLASTITE STAINLESS STEEL SCREW	
13	206575	240V / 25A RELAY	
14	206500	RELAY BRACKET	
15	219651	M4 X 10MM LONG POZI PAN THREAD CUTTING SCREW	
16	220876	20 MFD MOTOR RUN CAPACITOR (450V)	
17	205072	PROCESSED 12V DC BRUSHLESS FAN	
18	216288	TERMINAL BLOCK	
19	206562	CONTACT PIN	
20	206563	EARTH CONTACT PIN	
21	216290	CABLE CLAMP	
22	219009	M4 BRASS TAPPEX INSERT	
23	216293	LEVER PLATE	
24	216292	CUT OUT LEVER	
25	219677	No4 X 10MM LONG POZI PAN PLASTITE SCREW	
26	229454	HANDLE SWITCH	
27	227556	TOP MOTOR GASKET	
28	220964	APPLIANCE OUTPUT SOCKET	
29	229441	FLOOR MACHINE MIDDLE SECTION MOULDING	
30	216291	OUTPUT COVER	
	236136	MAINS CABLE (15.0 METERS / 1.5MM / 3 CORE YELLOW CABLE / SOCKET + EURO PLUG)	
	236087	MAINS CABLE (15.0 METERS / 1.5MM / 3 CORE CABLE / SOCKET + AUSTRALIAN PLUG)	
	236078	MAINS CABLE (15.0 METERS / 1.5MM / 3 CORE CABLE / SOCKET + SWISS PLUG)	
	236081	MAINS CABLE (15.0 METERS / 1.5MM / 3 CORE CABLE / SOCKET + SOUTH AFRICAN PLUG)	
31	328112	NU SPEED TOP SECTION MOULDING PRINTED	
32	219848	NO6 X 1 3/8 INCH LONG POZI PAN SCREW	
33	236072	MAINS CABLE (15.0 METERS / 1.5MM / 3 CORE CABLE / SOCKET + UK PLUG)	
34	206823	230V SINGLE SPEED VOLTAGE RELAY	
35	321193	AC LED WITH TERMINALS	
36	206753	UNIVERSAL POWER SUPPLY	
37	329228	GAURD PLATE	
38	208015	WHEEL SPACER	
39	206865	16A INPUT COVER C/W WINDOW PLUG	
40	205217	COMBINED INDUCTION MOTOR 4POLE 220-240V 50Hz	
41	208265	MOTOR START CAPACITOR 100 MFD C/W RESISTOR & M8 STUD	
42	229486	GREY TALL MOTOR INSERT MOULDING	
43	219471	M4 X 12MM LONG POZI PAN SEMS SCREW	

Numatic International Spare Parts

Model No: NR HANDLE ASSEMBLY EXPLODED DRAWING (EXP-0943)

Internal Code: 234514
 DRAWING: EXP-0943 ISS:A08
 PRO 26/01/2016

NB: FOR WIRING SEE DRAWING: WD-0345



Numatic International Spare Parts

Model No: NR HANDLE ASSEMBLY EXPLODED DRAWING (EXP-0943)

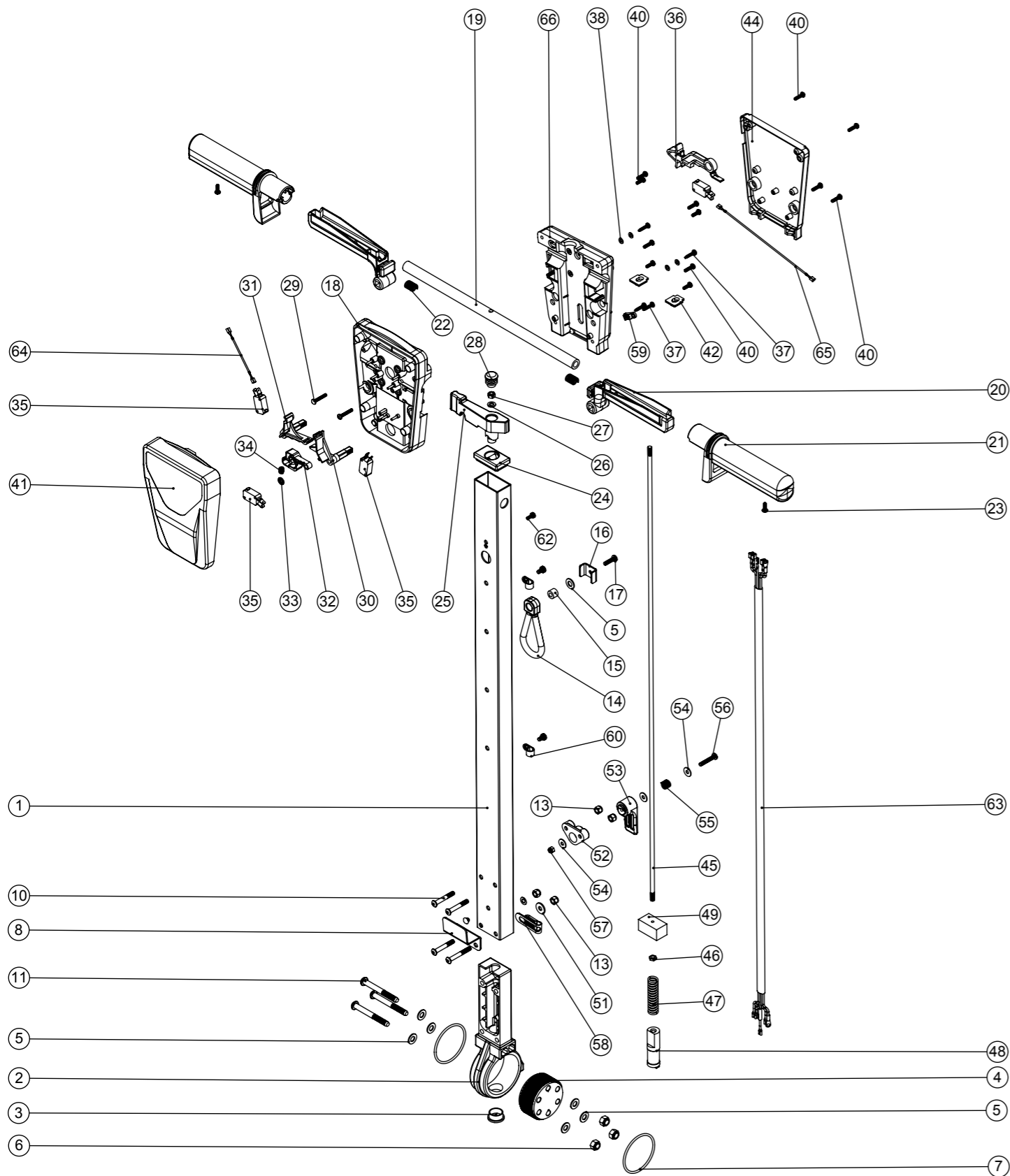
ITEM:	PART No:	Description	QTY.
1	429096	LOLINE HANDLE TUBE PAINTED (830)	1
2	229081	HANDLE CASTING MACHINED	1
3	229099	25MM DIA HOLE PLUG	1
4	229482	DUAL SETTING ADJUSTMENT GEAR	1
5	219010	M8 FORM A WASHER	6
6	219078	NUT.M8.NYLON INSERT.Z/PL	3
7	219254	O RING 3MM DIA X 60MM I/D	2
8	329000	HANDLE BRACKET	1
9	219881	M6 X 45MM SOCKET BUTTON HEAD SCREW	1
10	219807	M6 X 40MM LONG SOCKET BUTTON HEAD BOLT	3
11	219806	M8 X 70MM LONG SOCKET BUTTON HEAD BOLT	3
12	229009	BLANKING PLUG	1
13	219088	M6 NYLON INSERT NUT	4
14	227576	FRONT INNER HALF MOULDING	1
15	338269	CROSS TUBE	1
16	227581	TRIGGER MOULDING	2
17	227580	HAND GRIP MOULDING	2
18	219803	TRIGGER COMPRESSION SPRING	2
19	219270	No8 X 1/2 INCH LONG POZI PAN SELF TAP SCREW	2
20	227582	HANDLE PLUG MOULDING	1
21	227583	ADJUSTMENT LEVER MOULDING	1
22	219493	M6 NYLON WASHER	1
23	219642	M6 STAINLESS STEEL NYLON INSERT NUT	1
24	20638V	19MM BLACK TUBE END STOP	1
25	219811	NO8 X 1 INCH LONG POZI-PAN SELF TAP SCREW	2
26	227585	LEFT HAND SWITCH OPERATING LEVER MOULDING	1
27	227586	RIGHT HAND SWITCH OPERATING LEVER MOULDING	1
28	227587	CENTRE SWITCH OPERATING LEVER MOULDING	1
29	219805	4MM SPIREFIX	1
30	219804	SWITCH COMPRESSION SPRING	1
31	229483	SNAP ACTION SWITCH	4
32	227584	INTERLOCK LEVER MOULDING	1
33	219107	No6 X 5/8 INCH LONG POZI PAN PLASTITE SCREW	4
34	219206	M4 FORM A WASHER	4
35	219101	No8 X 1/2 INCH LONG POZI PAN PLASTITE SCREW	4
36	219105	No8 X 5/8 INCH LONG POZI PAN PLASTITE SCREW	8
37	318959	PRINTED FRONT COVER MOULDING	1
38	329539	MODIFIED BLANKING PLATE	1
39	227666	BLANKING PLUG	1
40	318968	PRINTED REAR COVER MOULDING	1
41	229484	840MM HANDLE LOCKING ROD	1
42	219099	M6 HALF NUT	1
43	229138	SPRING	1
44	229073	GEAR LOCKING PIN	1
45	229030	ANTI VIBRATION PAD	1
46	219007	M6 FORM B WASHER	1
47	219008	M6 FORM G WASHER	1
48	227807	CABLE RELEASE TOP MOULDING	1
49	219644	M5 FORM G STAINLESS STEEL WASHER	3
50	206599	SPRING (REF:C5514370)	1
51	219720	M5 X 30MM LONG STAINLESS STEEL POZI PAN SCREW	1
52	219076	M5 NYLON INSERT NUT	1
53	229139	P-CLIP	1
54	229669	LOLINE HANDLE CABLE CLAMP	1
55	219393	P CLIP	2
56	219047	M5 X 10MM LONG POZI PAN SEMS SCREW	2
57	219471	M4 X 12MM LONG POZI PAN SEMS SCREW	1
58	230134	NR 5 CORE LOOM ASSEMBLY (UK/EURO)	1
59	321247	60MM LONG BLUE LINK WIRE	1
60	321248	190MM LONG BLUE LINK WIRE	1
61	227577	REAR INNER HALF MOULDING	1
62	219743	CABLE CLEAT	1
63	902312	CABLE STRESS RELIEF	1
64	291133	M5 X 20MM LONG STAINLESS STEEL POZI PAN SEMS SCREW	1

Numatic International Spare Parts

Model No: NR HANDLE ASSEMBLY

NB: FOR WIRING SEE DRAWING: WD-0345

234514
DRAWING:EXP-0943 ISS:A03
01/10/2007



Numatic International Spare Parts

Model No: NR HANDLE ASSEMBLY

POS:	ITEM NO:	DESCRIPTION:	COMMENTS:
1	429096	LOLINE HANDLE TUBE PAINTED (830)	
2	229081	HANDLE CASTING MACHINED	
3	229099	25MM DIA HOLE PLUG	
4	229482	DUAL SETTING ADJUSTMENT GEAR	
5	219010	M8 FORM A WASHER	
6	219078	M8 NYLON INSERT NUT	
7	219254	O RING 3MM DIA X 60MM I/D	
8	329000	HANDLE BRACKET	
9	219881	M6 X 45MM SOCKET BUTTON HEAD SCREW	
10	219807	M6 X 40MM LONG SOCKET BUTTON HEAD BOLT	
11	219806	M8 X 70MM LONG SOCKET BUTTON HEAD BOLT	
12	229009	BLANKING PLUG	
13	219088	M6 NYLON INSERT NUT	
14	226008	STRESS RELIEF	
15	226006	SPACER (BLACK)	
16	329231	STRESS RELIEF BRACKET	
17	219054	M5 X 20MM LONG POZI PAN SCREW	
18	227576	FRONT INNER HALF MOULDING	
19	338269	CROSS TUBE	
20	227581	TRIGGER MOULDING	
21	227580	HAND GRIP MOULDING	
22	219803	TRIGGER COMPRESSION SPRING	
23	219270	No8 X 1/2 INCH LONG POZI PAN SELF TAP SCREW	
24	227582	HANDLE PLUG MOULDING	
25	227583	ADJUSTMENT LEVER MOULDING	
26	219493	M6 NYLON WASHER	
27	219642	M6 STAINLESS STEEL NYLON INSERT NUT	
28	20638V	CSP-302 BLACK TUBE END STOP	
29	219811	NO8 X 1 INCH LONG POZI-PAN SELF TAP SCREW	
30	227585	LEFT HAND SWITCH OPERATING LEVER MOULDING	
31	227586	RIGHT HAND SWITCH OPERATING LEVER MOULDING	
32	227587	CENTRE SWITCH OPERATING LEVER MOULDING	
33	219805	4MM SPIREFIX	
34	219804	SWITCH COMPRESSION SPRING	
35	229483	SNAP ACTION SWITCH	
36	227584	INTERLOCK LEVER MOULDING	
37	219107	No6 X 5/8 INCH LONG POZI PAN PLASTITE SCREW	
38	219206	M4 FORM A WASHER	
39	219101	No8 X 1/2 INCH LONG POZI PAN PLASTITE SCREW	
40	219105	No8 X 5/8 INCH LONG POZI PAN PLASTITE SCREW	
41	318959	PRINTED FRONT COVER MOULDING	
42	329539	MODIFIED BLANKING PLATE	
43	227666	BLANKING PLUG	
44	318968	PRINTED REAR COVER MOULDING	
45	229484	840MM HANDLE LOCKING ROD	
46	219099	M6 HALF NUT	
47	229138	SPRING	
48	229073	GEAR LOCKING PIN	
49	229030	ANTI VIBRATION PAD	
50	219007	M6 FORM B WASHER	
51	219008	M6 FORM G WASHER	
52	227806	CABLE RELEASE BASE MOULDING	
53	227807	CABLE RELEASE TOP MOULDING	
54	219644	M5 FORM G STAINLESS STEEL WASHER	
55	206599	SPRING (REF:C5514370)	
56	219720	M5 X 30MM LONG STAINLESS STEEL POZI PAN SCREW	
57	219076	M5 NYLON INSERT NUT	
58	229139	P-CLIP	
59	229669	LOLINE HANDLE CABLE CLAMP	
60	219393	P CLIP	
61	219047	M5 X 10MM LONG POZI PAN SEMS SCREW	
62	219471	M4 X 12MM LONG POZI PAN SEMS SCREW	
63	230134	NR 5 CORE LOOM ASSEMBLY (UK/EURO)	
64	321247	60MM LONG BLUE LINK WIRE	
65	321248	190MM LONG BLUE LINK WIRE	
66	227577	REAR INNER HALF MOULDING	