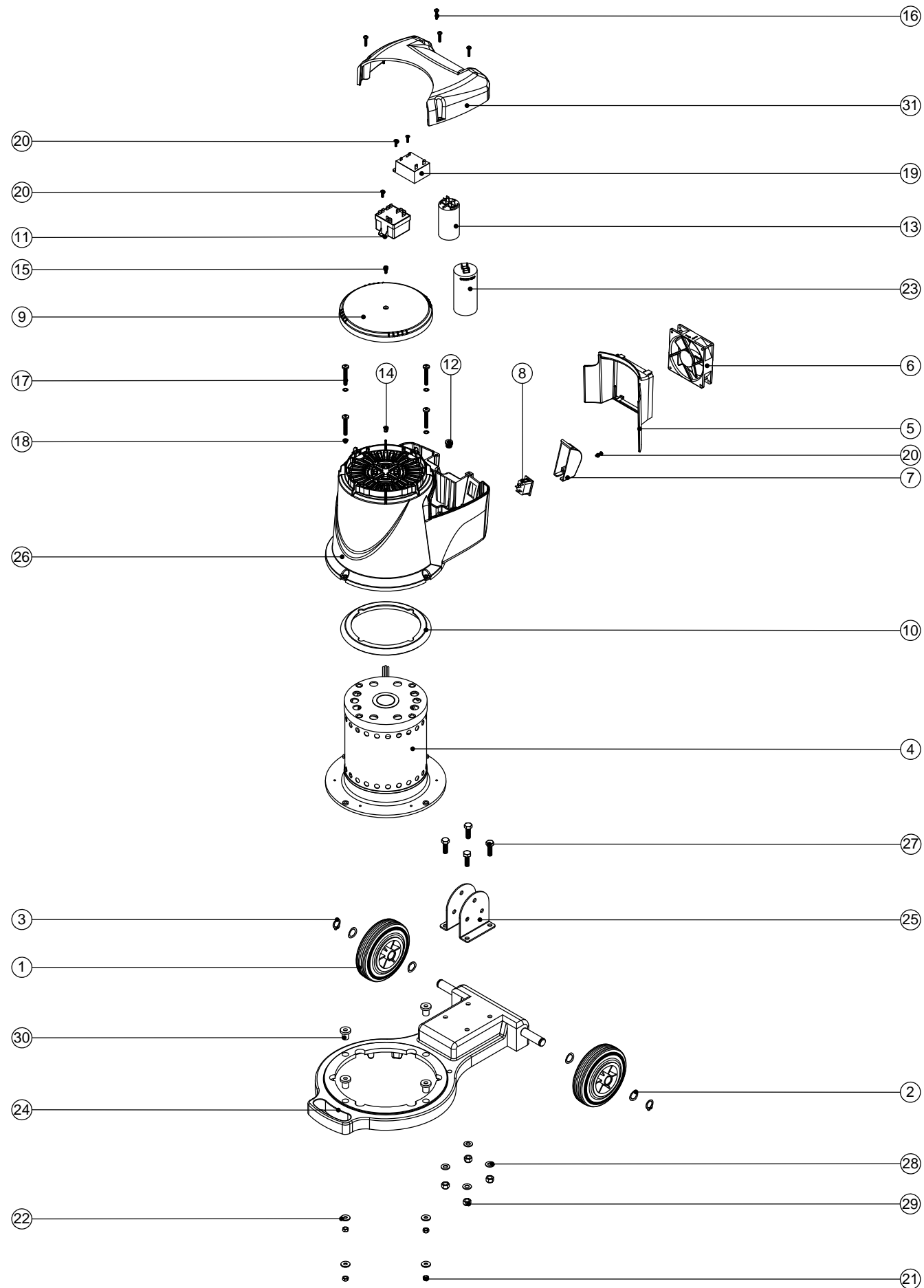


# Numatic International Spare Parts

**Model No:** NPO 1515/1523/1530 EXPLODED DRAWING

234694  
**DRAWING:** DRW-4627  
 22/09/2009 A01

**NB:** FOR WIRING SEE DRAWING: WD-0369



# Numatic International Spare Parts

**Model No:** NPO 1515/1523/1530 EXPLODED DRAWING

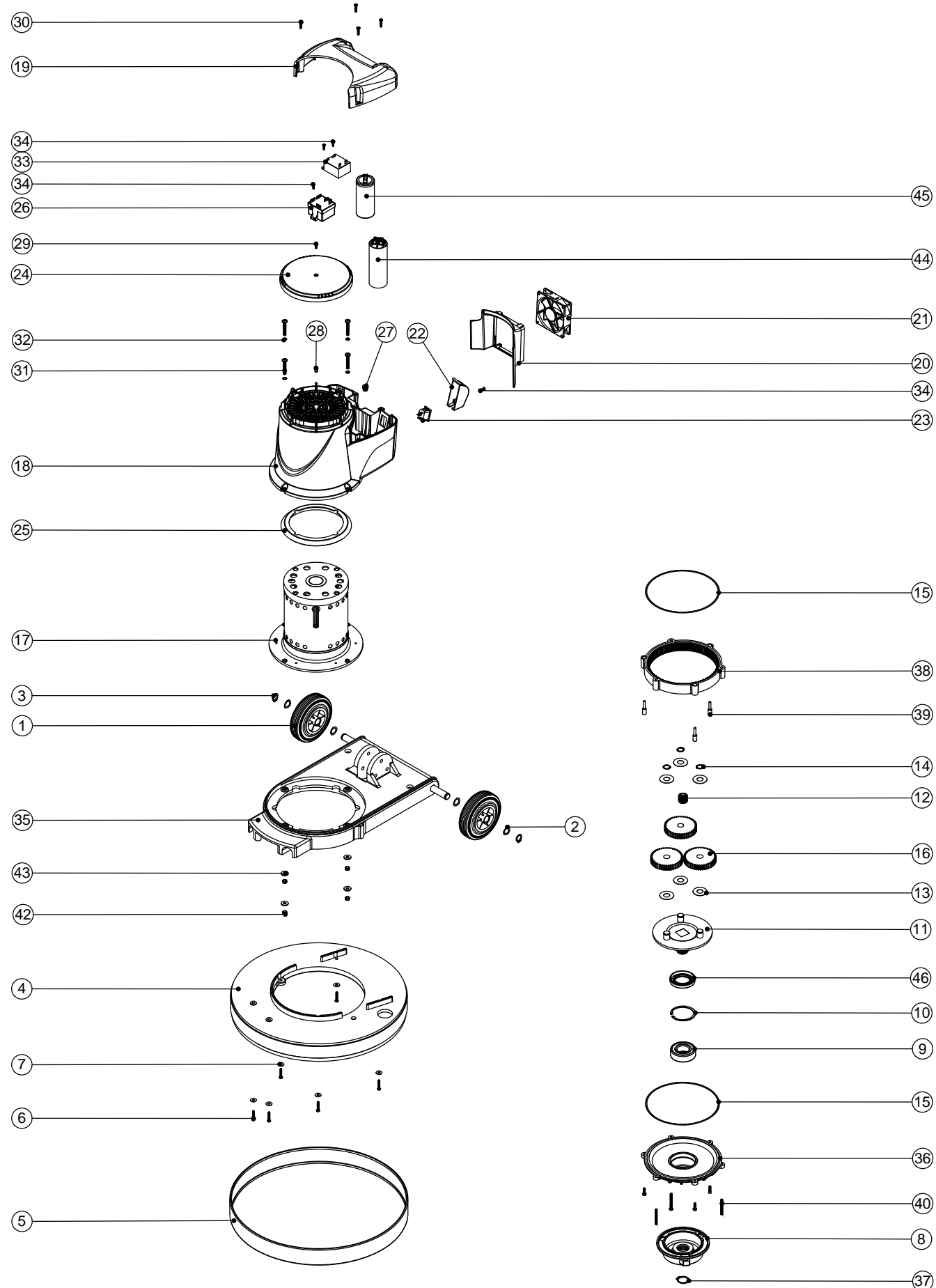
POS:	ITEM NO:	DESCRIPTION:	COMMENTS:
1	229060	WHEEL GREY BLACK HUB	
2	219219	21.5MM X 16.3MM WAVE WASHER	
3	229051	EXTERNAL CIRCLIP	
4	205217	COMBINED INDUCTION MOTOR 4POLE 220-240V 50Hz	
5	229972	FAN GUARD MOULDING	
6	205072	PROCESSED 12V DC BRUSHLESS FAN	
7	229213	PLUG COVER	
8	220584	RENDAR CLIP IN PLUG	
9	229971	CAP MOULDING	
10	227556	TOP MOTOR GASKET	
11	206823	230V SINGLE SPEED VOLTAGE RELAY	
12	219453	M8 MULTISERT	
13	220876	20 MFD MOTOR RUN CAPACITOR (450V)	
14	219009	M4 BRASS TAPPEX INSERT	
15	219471	M4 X 12MM LONG POZI PAN SEMS SCREW	
16	219568	No8 X 3/4 INCH LONG POZI PAN STAINLESS STEEL SCREW	
17	219982	M6 X 40MM LONG POZI PAN STAINLESS STEEL SCREW	
18	219544	M6 SHAKEPROOF WASHER	
19	206753	UNIVERSAL POWER SUPPLY	
20	219318	No6 X 1/2 INCH LONG POZI PAN PLASTITE SCREW	
21	219983	M6 NYLOC STAINLESS STEEL FULL NUT	
22	219647	M6 FORM G STAINLESS STEEL WASHER	
23	208265	MOTOR START CAPACITOR 100 MFD C/W RESISTOR & M8 STUD	
24	414055	BLUE NPO 1425 CASTING	
25	329006	HANDLE MOUNTING BRACKET	
26	328128	BLUE PRINTED MOTOR COWL MOULDING	
27	219092	M8 X 25MM LONG HEX BOLT	
28	219010	M8 FORM A WASHER	
29	219078	M8 NYLON INSERT NUT	
30	219146	RUBBER MOUNTING	
31	229970	BLUE LID MOULDING	

# Numatic International Spare Parts

**Model No:** NPR 1515/1523/1530 110V EXPLODED DRAWING

234657  
**DRAWING:** DRW-4112  
 14/09/2009 A01

**NB: FOR WIRING SEE DRAWING: WD-0369**



# Numatic International Spare Parts

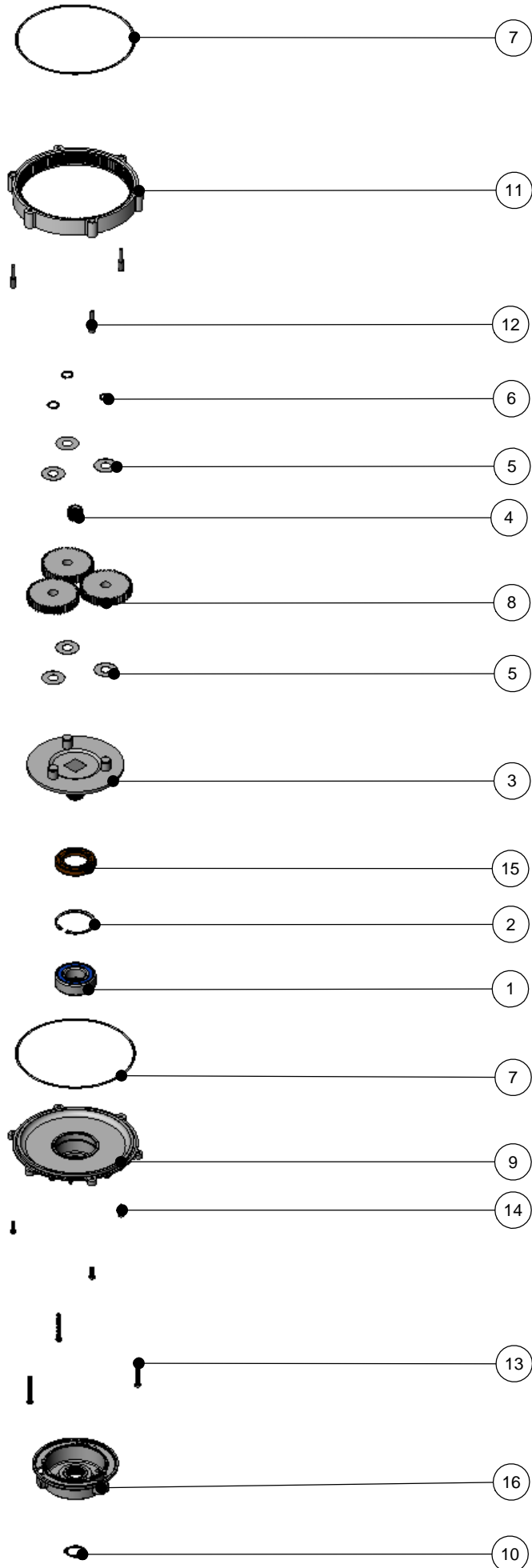
**Model No:** NPR 1515/1523/1530 110V EXPLODED DRAWING

POS	ITEM NO	DESCRIPTION:	COMMENTS:
1	229060	WHEEL GREY BLACK HUB	
2	219219	21.5MM X 16.3MM WAVE WASHER	
3	229051	EXTERNAL CIRCLIP	
4	237020	RING MOULD MED MULTIDECK (MID BLUE)	
5	206478	GREY MEDIUM BUFFER RING	
6	219369	No8 X 1 INCH LONG POZI PAN STAINLESS STEEL PLASTITE SCREW	
7	219644	M5 FORM G STAINLESS STEEL WASHER	
8	230059	DIE CAST CHUCK	
9	230094	62MM O/D X 30MM I/D X 20MM BEARING (WITH SEALS)	
10	230200	62MM INTERNAL CIRCLIP	
11	230291	PLANET CARRIER & PIN ASSEMBLY (50HZ STANDARD SPEED)	
	230292	PLANET CARRIER & PIN ASSEMBLY (60HZ HIGH SPEED)	NPR 1523/M ONLY
	230294	PLANET CARRIER & PIN ASSEMBLY (60HZ HIGH SPEED)	NPR 1530/H ONLY
12	230027	12 TOOTH PINION GEAR (STANDARD SPEED)	
	230025	20 TOOTH PINION GEAR (50HZ MEDIUM/60HZ HIGH SPEED)	NPR 1523/M ONLY
	230028	24 TOOTH PINION GEAR (HIGH SPEED)	NPR 1530/H ONLY
13	230215	35MM X 15 I/D ALUMINIUM WASHER	
14	230015	15MM EXTERNAL CIRCLIP	
15	230001	V OIL SEAL	
16	230013	48 TOOTH SPUR GEAR(STANDARD SPEED 50/60HZ)	
	230026	44 TOOTH SPUR GEAR (50HZ MEDIUM/60HZ HIGH SPEED)	NPR 1523/M ONLY
	230014	42 TOOTH SPUR GEAR (HIGH SPEED 50HZ)	NPR 1530/H ONLY (QTY OF 4)
17	205221	COMBINED INDUCTION MOTOR 4POLE 110V 50Hz	
18	328128	BLUE PRINTED MOTOR COWL MOULDING	
19	229970	BLUE LID MOULDING	
20	229972	FAN GUARD MOULDING	
21	205072	PROCESSED 12V DC BRUSHLESS FAN	
22	229213	PLUG COVER	
23	220584	RENDAR CLIP IN PLUG	
24	229971	CAP MOULDING	
25	227556	TOP MOTOR GASKET	
26	206822	110/120V VOLTAGE RELAY	
27	219453	M8 MULTISERT	
28	219009	M4 BRASS TAPPEX INSERT	
29	219471	M4 X 12MM LONG POZI PAN SEMS SCREW	
30	219568	No8 X 3/4 INCH LONG POZI PAN STAINLESS STEEL SCREW	
31	219982	M6 X 40MM LONG POZI PAN STAINLESS STEEL SCREW	
32	219544	M6 SHAKEPROOF WASHER	
33	206753	UNIVERSAL POWER SUPPLY	
34	219318	No6 X 1/2 INCH LONG POZI PAN PLASTITE SCREW	
35	304260	MULTIDECK BLACK BASE MOULDING SUB ASSY	
36	230208	DIE CAST BOTTOM PLATE ASSEMBLY	
37	230048	26MM EXTERNAL CIRCLIP	
38	214115	GEAR BOX MID SECTION	
39	208207	GEARBOX FASTENER WITH SLOT	
40	219706	M5 X 45MM LONG STAINLESS STEEL HEXAGONAL BOLT	
41	219904	M5 X16MM LONG HEXAGONAL STAINLESS STEEL BOLT	
42	219983	M6 NYLOC STAINLESS STEEL FULL NUT	
43	219647	M6 FORM G STAINLESS STEEL WASHER	
44	208219	70uF MOTOR RUN CAPACITOR	
45	208210	MOTOR START CAPACITOR 480uF	
46	230158	VITON OIL SEAL (BROWN)	

# Numatic International Spare Parts

**Model No:** NPR & NR RANGE GEARBOX EXPLODED DRAWING (ALL SPEEDS)

233756  
DRAWING: DRW-4439 ISS:A03  
31/10/2011



# Numatic International Spare Parts

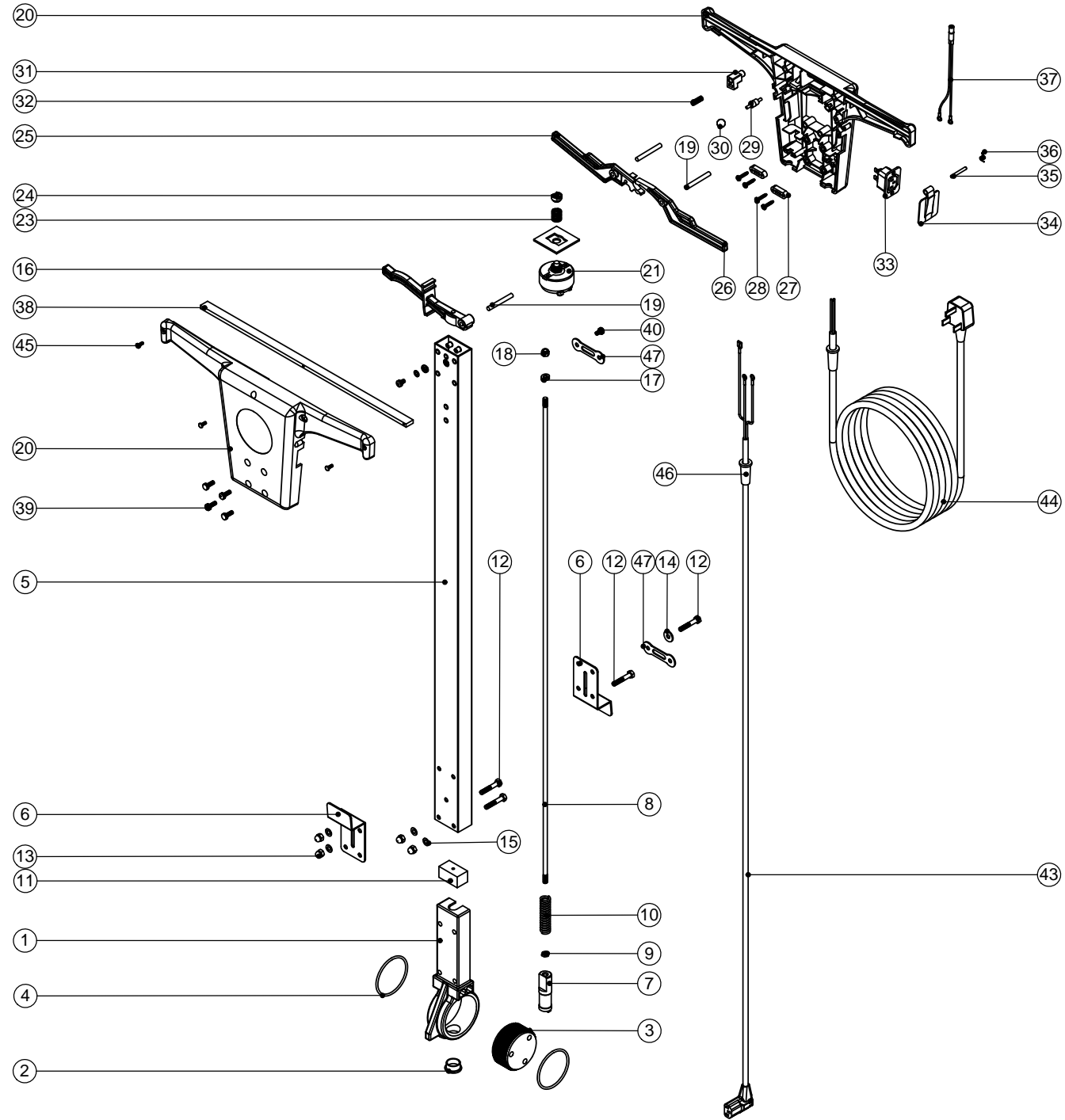
**Model No:** NPR & NR RANGE GEARBOX EXPLODED DRAWING (ALL SPEEDS)

POS:	ITEM NO:	DESCRIPTION:	COMMENTS:
1	230094	62MM O/D X 30MM I/D X 20MM BEARING (WITH SEALS)	
2	230200	62MM INTERNAL CIRCLIP	
3	230291	PLANET CARRIER & PIN ASSEMBLY (50HZ STANDARD SPEED)	NPR 1515/S & NR 1500S
	230292	PLANET CARRIER & PIN ASSEMBLY (60HZ HIGH SPEED)	NPR 1523/M, NPR1545/X, NR 1500M & NRS450
	230294	PLANET CARRIER & PIN ASSEMBLY (HIGH SPEED)	NPR 1530/H & NR1500H
4	230027	12 TOOTH PINION GEAR (STANDARD SPEED)	NPR 1515/S & NR 1500S
	230025	20 TOOTH PINION GEAR (50HZ MEDIUM/60HZ HIGH SPEED)	NPR 1523/M, NPR1545/X, NR 1500M & NRS450
	230028	24 TOOTH PINION GEAR (HIGH SPEED)	NPR 1530/H & NR1500H
5	230215	35MM X 15 I/D ALUMINIUM WASHER	
6	230015	15MM EXTERNAL CIRCLIP	
7	230001	V OIL SEAL	
8	230013	48 TOOTH SPUR GEAR (STANDARD SPEED 50/60HZ)	NPR 1515/S & NR 1500S
	230026	44 TOOTH SPUR GEAR (50HZ MEDIUM/60HZ HIGH SPEED)	NPR 1523/M, NPR1545/X, NR 1500M & NRS450
	230014	42 TOOTH SPUR GEAR (HIGH SPEED 50HZ)	NPR 1530/H & NR1500H
9	230208	DIE CAST BOTTOM PLATE ASSEMBLY	
10	230048	26MM EXTERNAL CIRCLIP	
11	214115	GEAR BOX MID SECTION	
12	208207	GEARBOX FASTENER WITH SLOT	
13	219706	M5 X 45MM LONG STAINLESS STEEL HEXAGONAL BOLT	
14	219904	M5 X 16MM LONG HEXAGONAL STAINLESS STEEL BOLT	
15	230158	VITON OIL SEAL (BROWN)	
16	330024	DIE CAST CHUCK MACHINED & PROCESSED	

# Numatic International Spare Parts

Model No: NPR HANDLE EXPLODED DRAWING ASSEMBLY

16/06/2009  
DRAWING: DRW-4022  
234651 A01



# Numatic International Spare Parts

Model No: NPR HANDLE EXPLODED DRAWING ASSEMBLY

POS	ITEM NO:	DESCRIPTION:	COMMENTS:
1	229081	HANDLE CASTING MACHINED	
2	229099	25MM DIA HOLE PLUG	
3	229074	ADJUSTMENT GEAR	
4	219254	O RING 3MM DIA X 60MM I/D	
5	429044	FLOOR MACHINE HANDLE (PAINTED SILVER)	
6	304172	(STAINLESS STEEL) MOUNTING BRACKET	
7	229073	GEAR LOCKING PIN	
8	229355	891MM HANDLE LOCKING ROD	
9	219099	M6 HALF NUT	
10	229138	SPRING	
11	229030	ANTI VIBRATION PAD	
12	219064	M6 X 35MM LONG HEX BOLT	
13	219080	M6 DOMENUT	
14	219008	M6 FORM G WASHER	
15	219007	M6 FORM B WASHER	
16	229003	ADJUSTMENT LEVER	
17	219017	M6 DOUBLE COIL SPRING WASHER	
18	219088	M6 NYLON INSERT NUT	
19	229071	LEVER MOUNTING PIN	
20	229254	HANDLE BOX MOULDING (GRAPHITE) WITH HOLE	
21	229448	SWITCH + NUTS	
22	229011	SWITCH PLATE	
23	229028	SWITCH SPRING	
24	219818	MOULDED WASHER	
25	229001	RIGHT HAND BLACK SWITCH LEVER	
26	229000	LEFT HAND BLACK SWITCH LEVER	
27	227008	BLACK CABLE CLAMP	
28	219107	No6 X 5/8 INCH LONG POZI PAN PLASTITE SCREW	
29	229033	BLANKING PIN	
30	229050	12MM (STAINLESS STEEL) BALL BEARING	
31	229066	RELEASE BUTTON	
32	219323	COMPRESSION SPRING	
33	229018	POWER TAKE OFF SOCKET	
34	229032	FLAP	
35	229035	FLAP PIVOT PIN	
36	229034	FLAP TORSION SPRING	
37	320074	240V HANDLE NEON INDICATOR ASSEMBLY	
38	229076	SUPPORT STRIP	
39	219045	M5 X 16MM LONG POZI PAN SEMS SCREW	
40	219047	M5 X 10MM LONG POZI PAN SEMS SCREW	
41	219153	EARTHING CUP WASHER	
42	219003	M5 FORM A STEEL WASHER	
43	229249	CORD SET ASSEMBLY	
	220685	1400MM LONG CSA CORD SET ASSEMBLY (110V)	OPTIONAL CORD SET
44	236088	MAINS CABLE (15.0 METERS / 1.5MM / 3 CORE CABLE / SOCKET + UK PLUG)	OPTIONAL CABLE
	236138	MAINS CABLE (15.0 METRE/1.5MM WIRE/3 WIRE/YELLOW CABLE/CONTINENTAL PLUG)	OPTIONAL CABLE
	236091	MAINS CABLE (15.0 METERS/14 AWG/3 CORE YELLOW CABLE/SJTW 5-15 CSA PLUG)	OPTIONAL CABLE
	236093	MAINS CABLE (15.0 METRE / 1.5MM / 3 WIRE / BLACK CABLE / AUSTRALIAN PLUG)	OPTIONAL CABLE
	236094	MAINS CABLE (15.0 METRE / 1.5MM / 3 WIRE / SWISS PLUG 1262/2)	OPTIONAL CABLE
	236095	MAINS CABLE (15.0 METRE / 1.5MM / 3 WIRE / M/CABLE / RSA PLUG)	OPTIONAL CABLE
	236098	MAINS CABLE (15.0 M LONG / 3 WIRE / 1.5MM CABLE / 16AMP INDUSTRIAL PLUG)	OPTIONAL CABLE
45	219212	M3.5 X 10MM LONG POZI PAN TAPTITE SCREW	
46	220015	STRESS RELIEF	
47	229139	CABLE CLAMP	