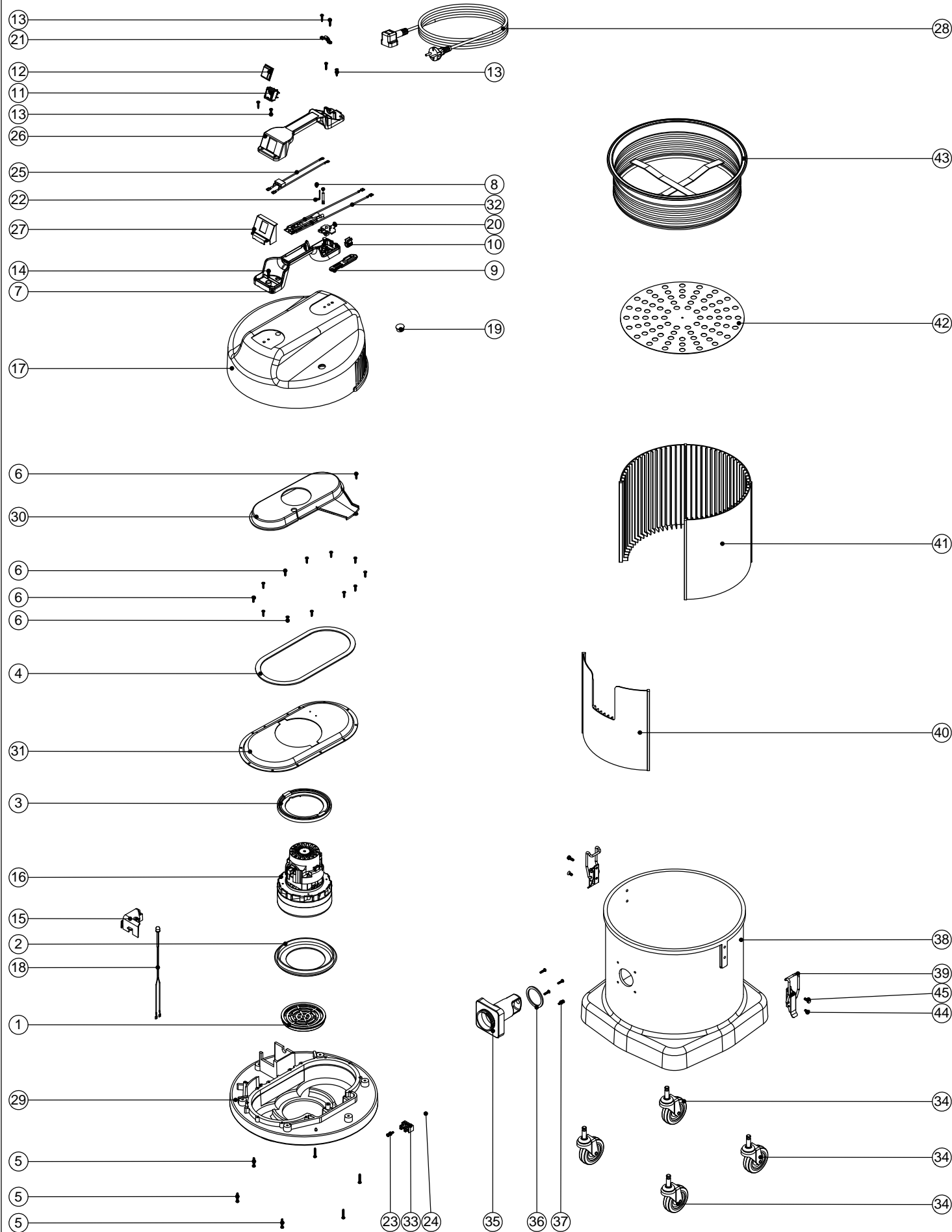


Numatic International Spare Parts

Model No: NDS 570 EXPLODED DRAWING

234739
DRAWING: DRW-5782 ISS: A01
15/04/2010

NB: FOR WIRING SEE DRAWING: DRW-5759,DRW-5761,DRW-5762



Numatic International Spare Parts

Model No: NDS 570 EXPLODED DRAWING

POS:	ITEM NO:	DESCRIPTION:	COMMENTS:
1	206010	FAN GUARD	
2	202005	MOTOR BOTTOM GASKET	
3	227925	TOP MOTOR GASKET	
4	202012	GASKET	
5	219369	No8 X 1 INCH LONG POZI PAN STAINLESS STEEL PLASTITE SCREW	
6	219370	No8 X 5/8 INCH LONG PLASTITE STAINLESS STEEL SCREW	
7	320686	HANDLE BASE MOULDING	
8	219090	M4 X 8MM LONG POZI PAN SEMS SCREW	
9	227636	STRAIN RELIEF	
10	227637	CABLE CLIP	
11	220552	RED ROCKER SWITCH	
12	206573	SWITCH COVER (PLUG HANDLE)	
13	219107	No6 X 5/8 INCH LONG POZI PAN PLASTITE SCREW	
14	219546	M5 X 20MM LONG POZI PAN SEMS SCREW	
15	237069	LED HOLDER (DUSTCARE SYSTEM)	
16	205442	220V 2 STAGE D.I BYPASS ACUSTEK MOTOR (BL21102T) (MARKED 230V) TCO	
	205443	240V 2 STAGE D.I BYPASS ACUSTEK MOTOR (BL21104T) (MARKED 230V) TCO	
	205441	120V 2 STAGE D.I BYPASS ACUSTEK MOTOR (BL21101T)TCO	
17	323001	NDD COVER PROCESSED FOR LOW FLO LED	
18	230165	LOW FLOW LED LOOM	
19	220967	LENS COVER	
20	227631	TERMINAL COVER & CLAMP (3 PIN)	
21	216290	CABLE CLAMP	
22	206562	CONTACT PIN	
23	21990V	M4 X 20MM LONG POZI PAN SCREW	
24	219083	M4 NYLON INSERT NUT	
25	230151	220V DUPLEX SUPPRESSOR ASSEMBLY	
26	229990	HANDLE COVER 16AMP 2PIN	
	320826	HANDLE COVER (DRILLED/HARD WIRED/V2 RATED)	
27	227635	SWITCH MOUNTING BRACKET (1 SWITCH)	
28	236144	10.0MT X 1.5MM X 2 CORE YELLOW CABLE (SOCKET + PLUG) EURO	
29	301047	PROCESSED BOTTOM MOTOR HOUSING	
30	325816	SIMPLEX AIR SEPARATOR DRILLED FOR TERMINAL BLOCK (FINE DUST SYSTEM)	
31	225167	SIMPLEX TOP MOTOR HOUSING	
32	230177	230V NDS LOW FLOW BOARD	
	230178	110V NDS LOW FLOW BOARD	
33	220316	TERMINAL BLOCK ELKAY	
34	204060	3 INCH CASTOR	
35	208220	BAG CONNECTOR - (FINE DUST 14" DRUM)	
36	202027	HOSE FLANGE GASKET	
37	219105	No8 X 5/8 INCH LONG POZI PAN PLASTITE SCREW	
38	325132	GREY CONTAINER	
39	206135	TOGGLE FASTENER	
40	308028	DRUM LINER (FOR ASSEMBLY VIEW ONLY)	
41	237048	DRUM LINER (FOR ASSEMBLY VIEW)	
42	401447	DRUM BASE (PAINTED GREY)	
43	207030	WHITE FILTER ASSEMBLY	
44	219330	M5 X 12MM LONG POZI PAN COUNTERSUNK SCREW	
45	219045	M5 X 16MM LONG POZI PAN SEMS SCREW	

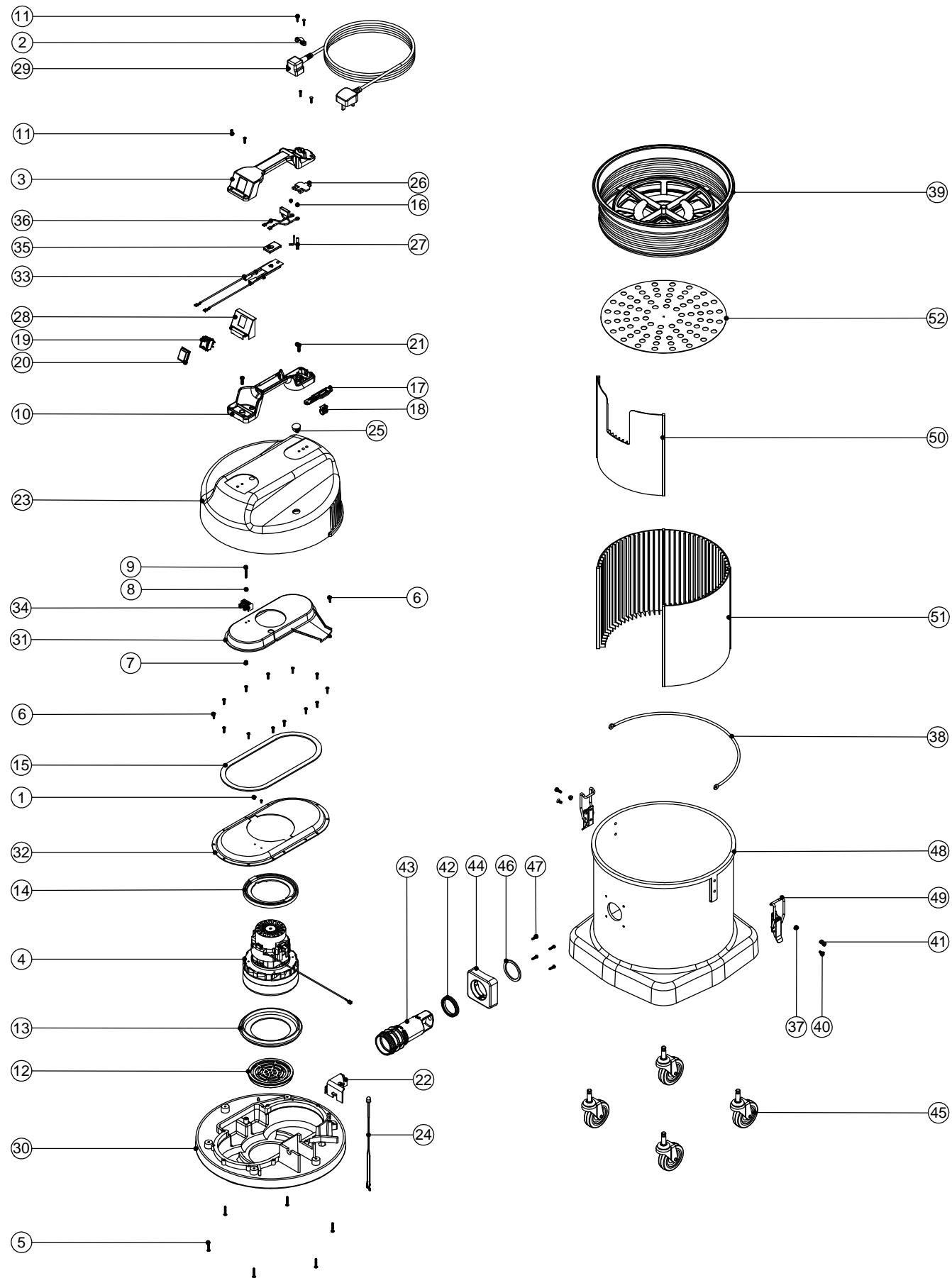
Numatic International Spare Parts

Model No: NDS 570 EXPLODED DRAWING

NB: FOR WIRING SEE DRAWING: DRW-5759,DRW-5761,DRW-5762

234739

DRAWING: DRW-5782 ISS: A02
14/02/2012



Numatic International Spare Parts

Model No: NDS 570 EXPLODED DRAWING

ITEM:	PART No:	DESCRIPTION:	COMMENTS:
1	219491	M3.5MM LG.POZI-PAN.SCREW.Z/PL.TAPTITE	
2	227564	PLUG LOCATION CLAMP	
	220131	CABLE CLAMP	USA
	220131	CABLE STRESS RELIEF RE. PV1157	USA
3	320677	HANDLE COVER DRILLED FOR HZ (SOCKET) 10 AMP 2 PIN	
	320826	HANDLE COVER DRILLED FOR HZ (HARD WIRED) V2	USA
4	305034	240V 2 STAGE D.I BYPASS ACUSTEK MOTOR (BL21104T) 220107 6.3MM PIGGYBACK TERMINAL	UK
	305035	230V 2 STAGE D.I BYPASS ACUSTEK MOTOR (BL21104T) 220107 6.3MM PIGGYBACK TERMINAL	EURO, SWISS
	305036	120V 2 STAGE D.I BYPASS ACUSTEK MOTOR (BL21101T) 220107 6.3MM PIGGYBACK TERMINAL	USA
5	219369	NO8.1 INCH LG.POZI-PAN.SCREW.STAINLESS STEEL.PLASTITE	
6	219370	NO8.5/8" LG.POZI-PAN.SCREW.STAINLESS STEEL.PLASTITE	
7	219687	NUT.M4.NYLON INSERT.S/STEEL	
8	219206	WASHER.M4.FORM A.Z/PL	
9	219321	M4.30MM LG.POZI-PAN.SCREW.Z/PL	
10	320686	HANDLE BASE MOULDING (SOCKET) PLUS INSERTS	
	320954	HANDLE BASE MOULDING (SOCKET)+ INSERTS V2 (PLASTIC HEAD)	USA
11	219107	NO6.5/8 INCH LG.POZI-PAN.SCREW.Z/PL.PLASTITE	
12	206010	FAN GUARD	
13	202005	MOTOR BOTTOM GASKET	
14	227925	TOP MOTOR GASKET (LAMB BYPASS MOTOR)	
15	202012	GASKET	
16	219090	M4.8MM LG.POZI-PAN.SCREW.Z/PL.SEM.	
17	227636	STRAIN RELIEF ARM (SOCKET)	
18	227637	CABLE CLIP (SOCKET)	
19	220552	RED ROCKER SWITCH (WHITE PRINT)	
20	206573	SWITCH COVER (PLUG HANDLE)	
21	219546	M5.20MM LG.POZI-PAN.SCREW.Z/PL.SEM	
22	237069	LED HOLDER (DUSTCARE SYSTEM)	
23	323001	NDD COVER PROCESSED FOR LOW FLO LED	
24	321555	LOW FLOW LED LOOM	
25	220967	WINDOW PLUG (TYPE WP 750) HEYCO REF: 438 1309	
26	227631	TERMINAL COVER & CLAMP 3PIN	
27	206562	CONTACT PIN	
	206563	EARTH CONTACT PIN	USA
28	227635	SWITCH MOUNTING BRACKET 1 SWITCH	
29	236009	10.0MT X 1MM X 2 CORE CABLE (SOCKET + PLUG) UK	
	236123	10.0MT X 1MM X 2 CORE YELLOW CABLE (SOCKET + PLUG) EURO	
	236017	10.0MT X 1MM X 2 CORE CABLE (SOCKET + PLUG) SWISS	
	236063	10.0MT X 3CORE X 14AWG (YELLOW) SJTW 5-15P PLUG CSA	
30	301047	BOTTOM MOTOR HOUSING PUNCH NV/WV 14 INCH 900 SERIES	
31	325816	570 AIR SEPERATOR LAMB SIMPLEX (DRILLED)	
32	225167	SIMPLEX TOP MOTOR HOUSING	
	325129	SIMPLEX TOP MOTOR HOUSING MOD	USA
33	230177	230V NDS LOW FLOW BOARD	
34	220316	NHD2 TERMINAL BLOCK ELKAY	
35	202086	LOW FLOW PCB MOUNTING GASKET	
36	220558	SUPPRESSOR ASSEMBLY	UK
	230151	220V DUPLEX SUPPRESSOR ASSY (LAMB MOTOR)	EURO, SWISS
37	208025	SPACER BUCKET HANDLE WV575/750	
38	418512	BUCKET HANDLE CRANKED PNT BLACK	
39	502014	14 INCH WHITE FILTER ASSEMBLY	
40	219330	M5.12MM LG.POZI-PAN.SCREW.Z/PL.C/SUNK	
41	219045	M5.16MM LG.POZI-PAN.SCREW.Z/PL.SEM	
42	202102	BAYONET SEAL	
43	237342	BAG CONNECTOR TUBE	
44	237343	BAG CONNECTOR FRONT	
45	204060	3 INCH STEM FITTING CASTOR	
46	202027	HOSE FLANGE GASKET	
47	219105	NO8.5/8 INCH LG.POZI-PAN.SCREW.Z/PL.PLASTITE	
48	325132	572 GREY DRUM PUNCH & INSERT	
49	206135	TOGGLE FASTENER 30-1665 MSBL	
50	308028	DRUM LINER (FOR ASSEMBLY VIEW ONLY)	
51	237048	DRUM LINER (FOR ASSEMBLY VIEW)	
52	401447	DRUM BASE (FINE DUST VACUUM CLEANER) PAINTED GREY	