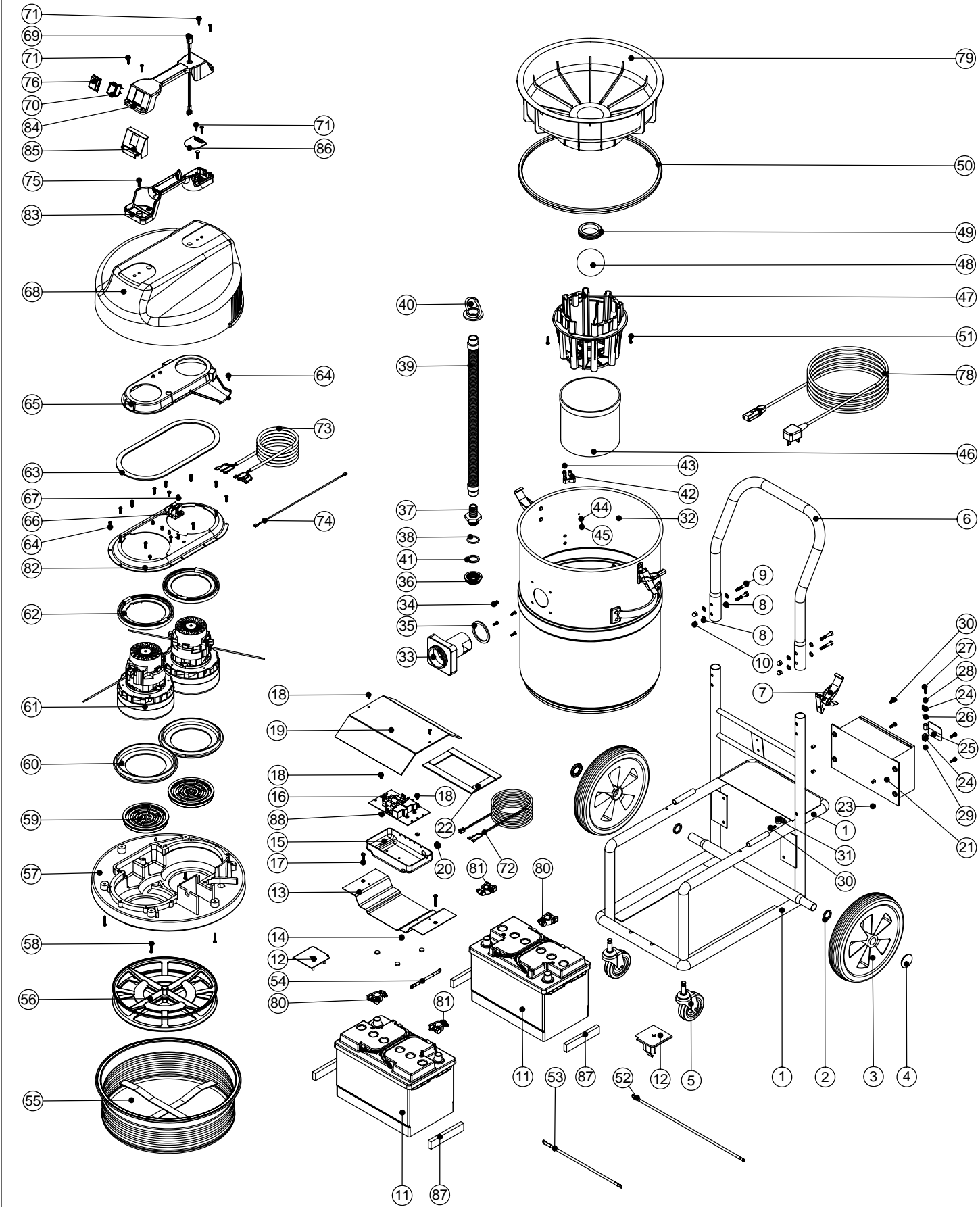


Numatic International Spare Parts

Model No: WVDB750-2 EXPLODED DRAWING

234378
DRAWING: EXP-0809 ISS:A02
19/06/2006



Numatic International Spare Parts

Model No: WVDB750-2 EXPLODED DRAWING

POS:	ITEM NO:	DESCRIPTION:	COMMENTS:	
1	302025	STAINLESS STEEL CHASSIS ASSEMBLY		
2	219505	NYLON WASHER		
3	204028	10 INCH WHEEL		
4	219504	STARLOCK PUSH ON FASTENER		
5	204060	3 INCH CASTOR		
6	402015	BLACK CHASSIS HANDLE		
7	206028	TOGGLE		
8	219007	M6 FORM B WASHER		
9	219064	M6 X 35MM LONG HEX BOLT		
10	219080	M6 DOMENUT		
11	220868	12V TRACTION BLOCK BATTERY		
12	220409	POSITIVE BATTERY TERMINAL COVER		
13	303298	BATTERY CLAMP		
14	206322	RUBBER FOOT BLACK		
15	229334	RELAY/FUSE BOX		
16	220448	FUSE/RELAY BOARD		
17	299020	M5 X 30MM LONG POZI PAN SCREW		
18	219212	M3.5 X 10MM LONG POZI PAN TAPTITE SCREW		
19	303300	RELAY/FUSE BOARD COVER		
20	219680	GROMMET		
21	220451	CHARGER UNIT + OVERLOAD 220/240V		
22	220452	CHARGER UNIT + OVERLOAD 110/120V		
23	212024	INSEAL		
24	219508	SPIROL SPACER		
25	403037	BLACK CHARGER BRACKET		
26	229032	FLAP		
27	229034	FLAP TORSION SPRING		
28	219609	M4 X 21MM LONG POZI PAN SCREW		
29	219015	M4 SHAKEPROOF WASHER		
30	219083	M4 NYLON INSERT NUT		
31	219045	M5 X 16MM LONG POZI PAN SEMS SCREW		
32	219465	P-CLIP		
33	400193	BATTERY VAC STAINLESS STEEL DRUM ASSEMBLY		
34	206117	FLANGE		
35	219101	No8 X 1/2 INCH LONG POZI PAN PLASTITE SCREW		
36	202027	HOSE FLANGE GASKET		
37	216192	3/4 INCH BSP BACK NUT		
38	216191	3/4 INCH HOSE TAIL + O RING GROOVE		
39	216193	O RING		
40	213108	DUMP HOSE ASSEMBLY		
41	206058	HOSE CLOSURE		
42	202067	SEALING GASKET		
43	219503	TOOL CLIP		
44	219502	M3 STAINLESS STEEL FULL NUT		
45	219501	M3 FORM A STAINLESS STEEL WASHER		
46	219500	M3 X 16MM LONG STAINLESS STEEL SLOT SCREW		
47	207073	GAUZE FILTER		
48	225130	MOULDED FLOAT CAGE		
49	206026	POLYPROP BALL		
50	220235	FLOAT GROMMET		
51	202036	FLOAT MOULD EXTRUSION SEAL		
52	219568	No8 X 3/4 INCH LONG POZI PAN STAINLESS STEEL SCREW		
53	320013	350MM LONG X 6MM SQ RED LINK WIRE		
54	320247	230MM LONG X 6MM SQ BLACK LINK WIRE		
55	320238	50MM LONG X 6MM SQ BLACK LINK WIRE		
56	207030	WHITE FILTER ASSEMBLY		
57	209600	DOUBLE 12 INCH FILTER GRID (GROOVED CIRCULAR RIB)		
58	301048	PROCESSED BOTTOM MOTOR HOUSING		
59	219369	No8 X 1 INCH LONG POZI PAN STAINLESS STEEL PLASTITE SCREW		
60	206010	FAN GUARD		
61	202005	MOTOR BOTTOM GASKET		
62	205416	24V 2 STAGE BYPASS DC MOTOR (BL24400)		
63	227925	TOP MOTOR GASKET		
64	202012	GASKET		
65	219370	No8 X 5/8 INCH LONG PLASTITE STAINLESS STEEL SCREW		
66	227928	570 AIR SEPERATOR (LAMB BYPASS MOTOR DUPLEX)		
67	220114	TERMINAL BLOCK		
68	219471	M4 X 12MM LONG POZI PAN SEMS SCREW		
69	325047	COVER MOULDING - NO LOGO		
70	220450	LED LOOM & HOLDER		
71	220843	BLUE ROCKER SWITCH		
72	219107	No6 X 5/8 INCH LONG POZI PAN PLASTITE SCREW		
73	220449	CONTROL LEAD		
74	320245	4 CORE MOTOR CABLE ASSEMBLY		
75	320250	290MM LONG BLUE LINK WIRE		
76	219546	M5 X 20MM LONG POZI PAN SEMS SCREW		
77	206573	SWITCH COVER (PLUG HANDLE)		
78	219491	M5 X 3MM LONG POZI PAN TAPTITE SCREW		
79	220619	2 CORE CHARGING LEAD + UK PLUG		
80	220410	2 CORE CHARGING LEAD + EURO PLUG		
81	320283	2 CORE CHARGING LEAD (NO PLUG)		
82	225101	FLOAT MOULDING		
83	220454	POSITIVE BATTERY TERMINAL CONVERTER		
84	220455	NEGATIVE BATTERY TERMINAL CONVERTOR		
85	325531	PROCESSED DUPLEX TOP MOTOR HOUSING		
86	321046	MODIFIED HANDLE BASE MOULDING		
87	320880	MODIFIED HANDLE COVER MOULDING		
88	227635	SWITCH MOUNTING BRACKET (1 SWITCH)		
	86	220131	CABLE CLAMP	
	87	320896	BATTERY PAD	
	88	219462	RUBBER WASHER	