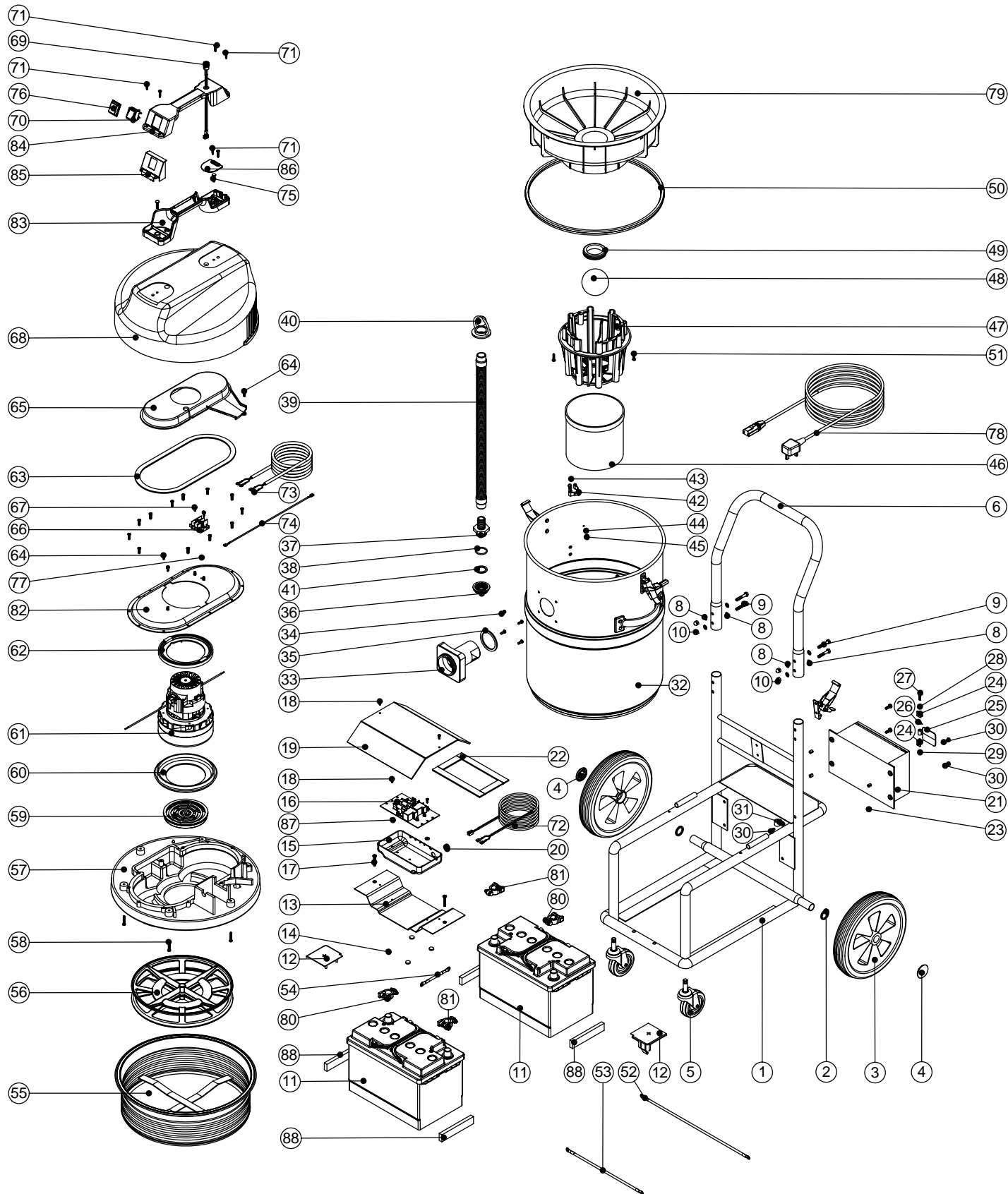


# Numatic International Spare Parts

## Model No: WVB750-2 EXPLODED DRAWING

234377  
DRAWING: EXP-0808 ISS:A02  
19/06/2006



# Numatic International Spare Parts

## Model No: WVB750-2 EXPLODED DRAWING

POS:	ITEM NO:	DESCRIPTION:	COMMENTS:
1	302025	STAINLESS STEEL CHASSIS ASSEMBLY	
2	219505	NYLON WASHER	
3	204028	10 INCH WHEEL	
4	219504	STARLOCK PUSH ON FASTENER	
5	204060	3 INCH CASTOR	
6	402015	BLACK CHASSIS HANDLE	
7	206028	TOGGLE	
8	219007	M6 FORM B WASHER	
9	219064	M6 X 35MM LONG HEX BOLT	
10	219080	M6 DOMENUT	
11	220868	12V TRACTION BLOCK BATTERY	
12	220409	POSITIVE BATTERY TERMINAL COVER	
13	303298	BATTERY CLAMP	
14	206322	RUBBER FOOT BLACK	
15	229334	RELAY/FUSE BOX	
16	220448	FUSE/RELAY BOARD	
17	299020	M5 X 30MM LONG POZI PAN SCREW	
18	219212	M3.5 X 10MM LONG POZI PAN TAPTITE SCREW	
19	303300	RELAY/FUSE BOARD COVER	
20	219680	GROMMET	
21	220451	CHARGER UNIT + OVERLOAD 220/240V	
22	220452	CHARGER UNIT + O/LOAD 110/120V	
23	212024	INSEAL	
24	219508	SPIROL SPACER	
25	403037	BLACK CHARGER BRACKET	
26	229032	FLAP	
27	229034	FLAP TORSION SPRING	
28	219609	M4 X 21MM LONG POZI PAN SCREW	
29	219015	M4 SHAKEPROOF WASHER	
30	219083	M4 NYLON INSERT NUT	
31	219045	M5 X 16MM LONG POZI PAN SEMS SCREW	
32	219465	P-CLIP	
33	400193	BATTERY VAC STAINLESS STEEL DRUM ASSEMBLY	
34	206117	FLANGE	
35	219101	No8 X 1/2 INCH LONG POZI PAN PLASTITE SCREW	
36	202027	HOSE FLANGE GASKET	
37	216192	3/4 INCH BSP BACK NUT	
38	216191	3/4 INCH HOSE TAIL + O RING GROOVE	
39	216193	O RING	
40	213108	DUMP HOSE ASSEMBLY	
41	206058	HOSE CLOSURE	
42	202067	SEALING GASKET	
43	219503	TOOL CLIP	
44	219502	M3 STAINLESS STEEL FULL NUT	
45	219501	M3 FORM A STAINLESS STEEL WASHER	
46	219500	M3 X 16MM LONG STAINLESS STEEL SLOT SCREW	
47	207073	GAUZE FILTER	
48	225130	MOULDED FLOAT CAGE	
49	206026	POLYPROP BALL	
50	220235	FLOAT GROMMET	
51	202036	FLOAT MOULD EXTRUSION SEAL	
52	219568	No8 X 3/4 INCH LONG POZI PAN STAINLESS STEEL SCREW	
53	320013	350MM LONG X 6MM SQ RED LINK WIRE	
54	320247	230MM LONG X 6MM SQ BLACK LINK WIRE	
55	320238	50MM LONG X 6MM SQ BLACK LINK WIRE	
56	207030	WHITE FILTER ASSEMBLY	
57	209600	DOUBLE 12 INCH FILTER GRID (GROOVED CIRCULAR RIB)	
58	301047	PROCESSED BOTTOM MOTOR HOUSING	
59	219369	No8 X 1 INCH LONG POZI PAN STAINLESS STEEL PLASTITE SCREW	
60	206010	FAN GUARD	
61	202005	MOTOR BOTTOM GASKET	
62	205416	24V 2 STAGE BYPASS DC MOTOR (BL24400)	
63	227925	TOP MOTOR GASKET	
64	202012	GASKET	
65	219370	No8 X 5/8 INCH LONG PLASTITE STAINLESS STEEL SCREW	
66	227929	AIR SEPERATOR (SIMPLEX)	
67	220114	TERMINAL BLOCK	
68	219471	M4 X 12MM LONG POZI PAN SEMS SCREW	
69	325047	COVER MOULDING - NO LOGO	
70	220450	LED LOOM & HOLDER	
71	220843	BLUE ROCKER SWITCH	
72	219107	No6 X 5/8 INCH LONG POZI PAN PLASTITE SCREW	
73	220449	CONTROL LEAD	
74	320246	2 CORE MOTOR CABLE ASSEMBLY	
75	320250	290MM LONG BLUE LINK WIRE	
76	219546	M5 X 20MM LONG POZI PAN SEMS SCREW	
77	206573	SWITCH COVER (PLUG HANDLE)	
78	219491	M5 X 3MM LONG POZI PAN TAPTITE SCREW	
79	220619	2 CORE CHARGING LEAD + UK PLUG	
80	220410	3 CORE CHARGING LEAD + EURO PLUG	
81	320283	2 CORE CHARGING LEAD NO PLUG	
82	225101	FLOAT MOULDING	
83	220454	POSITIVE BATTERY TERMINAL CONVERTER	
84	220455	NEGATIVE BATTERY TERMINAL CONVERTOR	
85	325591	SIMPLEX BAT VAC TMH (LAMB) (SPARE PART)	
86	321046	MODIFIED HANDLE BASE MOULDING	
87	320880	MODIFIED HANDLE COVER MOULDING	
88	227635	SWITCH MOUNTING BRACKET (1 SWITCH)	
89	220131	CABLE CLAMP	
90	219462	RUBBER WASHER	
91	320896	BATTERY PAD	