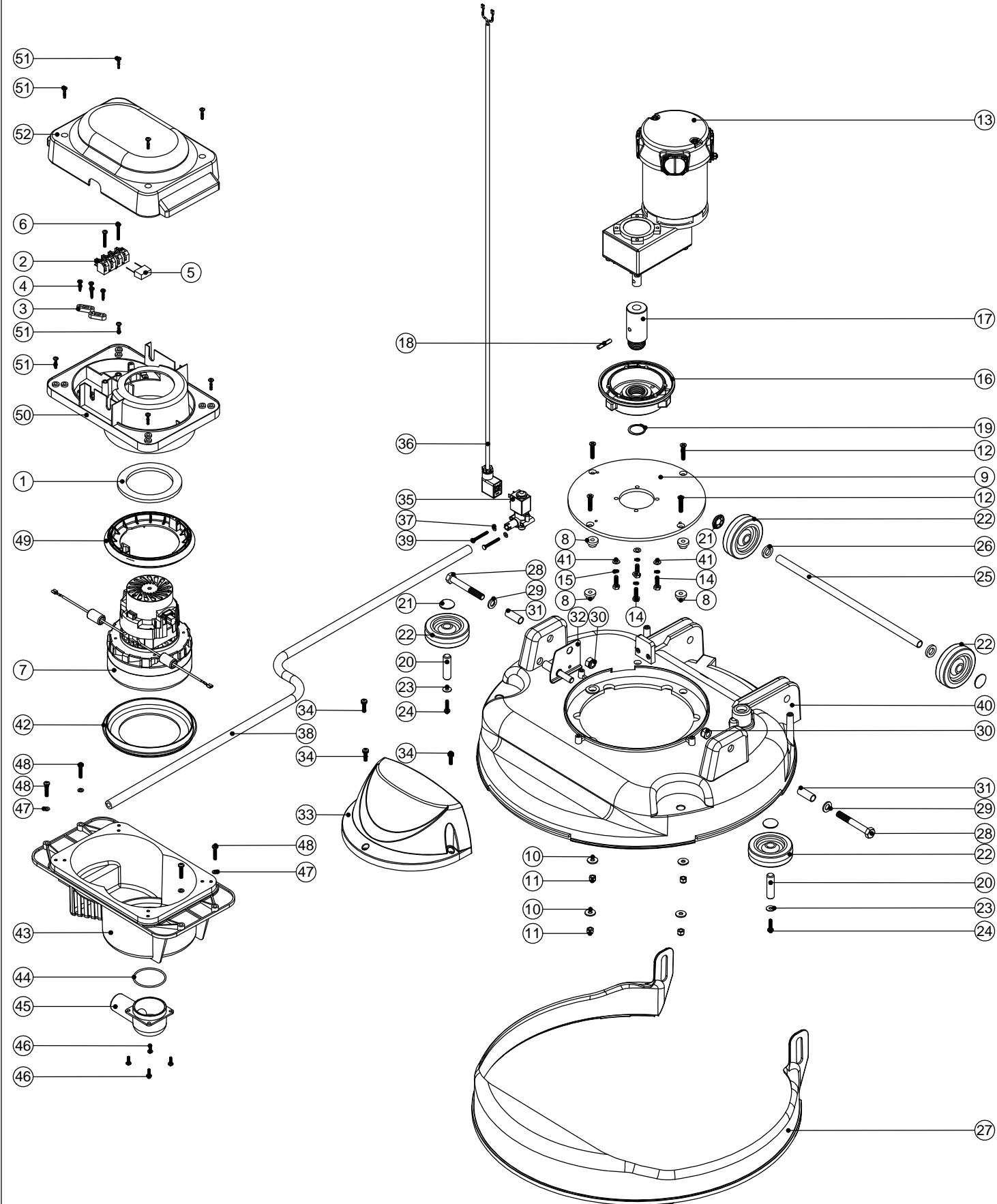


Numatic International Spare Parts

Model No: TTB4550/100S (Power Electronics) Base Deck/Vac Pod Assy

234844
DRAWING: DRW-10862 ISS: A01
28/11/2011

NB: FOR WIRING SEE DRAWING: DRW-5558



Numatic International Spare Parts

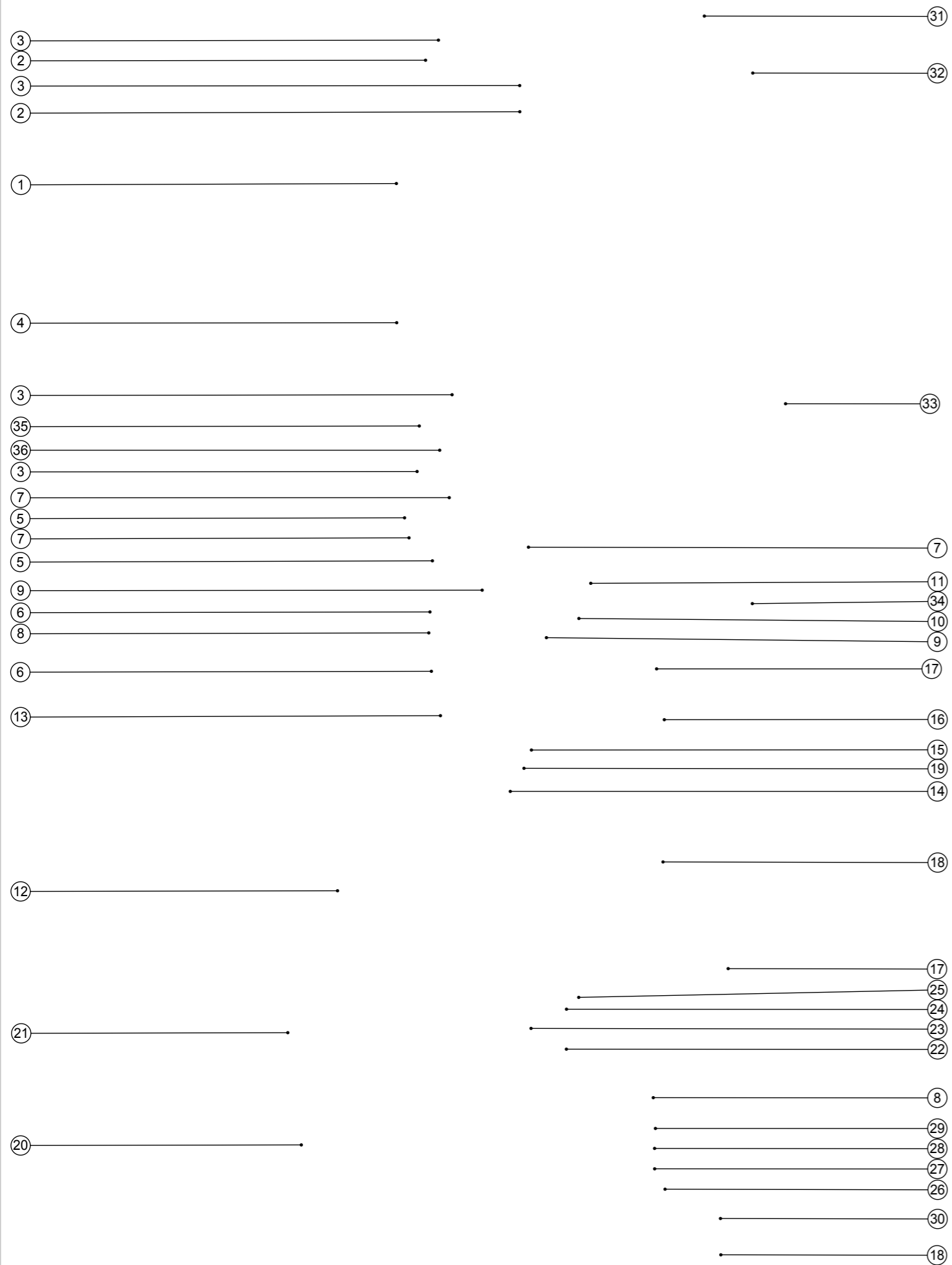
Model No: TTB4550/100S (Power Electronics) Base Deck/Vac Pod Assy

POS:	ITEM NO:	DESCRIPTION:	COMMENTS:
1	202078	MOTOR CAP GASKET	
2	220204	TERMINAL BLOCK	
3	227008	BLACK CABLE CLAMP	
4	219107	No6 X 5/8 INCH LONG POZI PAN PLASTITE SCREW	
5	208512	X1 SUPPRESSION CAPACITOR (0.22uF / 300V AC / 22.5MM PITCH)	
6	219321	M4 X 30MM LONG POZI PAN SCREW	
7	321106	24V D.C BP MOTOR ASSEMBLY	
8	229285	MOTOR MOUNTING SPACER	
9	404090	AMER MOTOR ADAPTOR PLATE (PAINTED GREY)	
10	219008	M6 FORM G WASHER	
11	219088	M6 NYLON INSERT NUT	
12	291031	M6 X 30MM LONG STAINLESS STEEL COUNTERSUNK POZI PAN SCREW	
13	205245	AMER BRUSH MOTOR (24V-330W-100RPM-15AMP)	
14	219976	M6 X 20MM LONG HEXANGONAL HEAD SET SCREW	
15	219718	M6 STAINLESS STEEL SPRING WASHER	
16	230207	DIE CAST CHUCK MACHINED	
17	229201	DRIVE SHAFT	
18	219523	GROOVED PIN	
19	230048	26MM EXTERNAL CIRCLIP	
20	206013	BUFFER WHEEL PIN	
21	204021	12.7MM STAINLESS STEEL HUB CAP	
22	204068	3 INCH GREY WHEEL	
23	219644	M5 FORM G STAINLESS STEEL WASHER	
24	219571	M5 X 20MM LONG POZI PAN STAINLESS STEEL SCREW	
25	391065	350MM LONG X 1/2 INCH DIAMETER X 18G STAINLESS STEEL TUBE	
26	229346	SPACER	
27	229562	SPLASH SKIRT MOULDING	
28	219698	M10 X 75MM LONG HEX BOLT	
29	219449	M10 FORM A WASHER	
30	219649	M10 NYLON INSERT NUT	
31	390858	32MM LONG SPACER	
32	303990	LOCKING BAR ASSEMBLY	
33	229499	MOTOR SHROUD	
34	219546	M5 X 20MM LONG POZI PAN SEMS SCREW	
35	220379	24V D.C. SOLENOID VALVE	
36	321554	24V SOLENOID VALVE LEAD ASSEMBLY	
37	219688	M4 FORM A STAINLESS STEEL WASHER	
38	303737	SILICONE TUBE (1070MM LONG)	
39	219703	M4 X 35MM LONG STAINLESS STEEL POZI PAN SCREW	
40	333189	INSERTED GREY BASE MOULDING ASSEMBLY	
41	219560	M6 FORM B STAINLESS STEEL WASHER	
42	202111	BOTTOM MOTOR GASKET	
43	229204	BOTTOM MOTOR HOUSING (STANDARD MATERIAL)	
44	219561	51.6MM I/D O RING	
45	229207	INLET TUBE	
46	219569	No8 X 1/2 INCH POZI PAN STAINLESS STEEL SCREW	
47	219003	M5 FORM A STEEL WASHER	
48	219575	M5 X 25MM LONG POZI PAN STAINLESS STEEL SCREW	
49	202107	TOP MOTOR GASKET	
50	229998	VAC POD TOP MOTOR HOUSING C/W TAPPEX	
51	219568	No8 X 3/4 INCH LONG POZI PAN STAINLESS STEEL SCREW	
52	229206	VAC POD TOP COVER MOULDING	

Numatic International Spare Parts

Model No: TTB-4500/100ST/TT-3450S/TT-3450C/TTB-3450S/TTB-3405C /TT-4500S/TT-4550S/TTB-4500S/TTB-4552S/TTB3450CRS/TTB-4552/100ST TANK/SEPARATOR ASSEMBLY

234276
DRAWING: EXP-0707 ISS:A21
16/06/2014



Numatic International Spare Parts

Model No: TTB-4500/100ST/TT-3450S/TT-3450C/TTB-3450S/TTB-3405C /TT-4500S/TT-4550S/TTB-4500S/TTB-4552S/TTB3450CRS/TTB-4552/100ST TANK/SEPARATOR ASSEMBLY

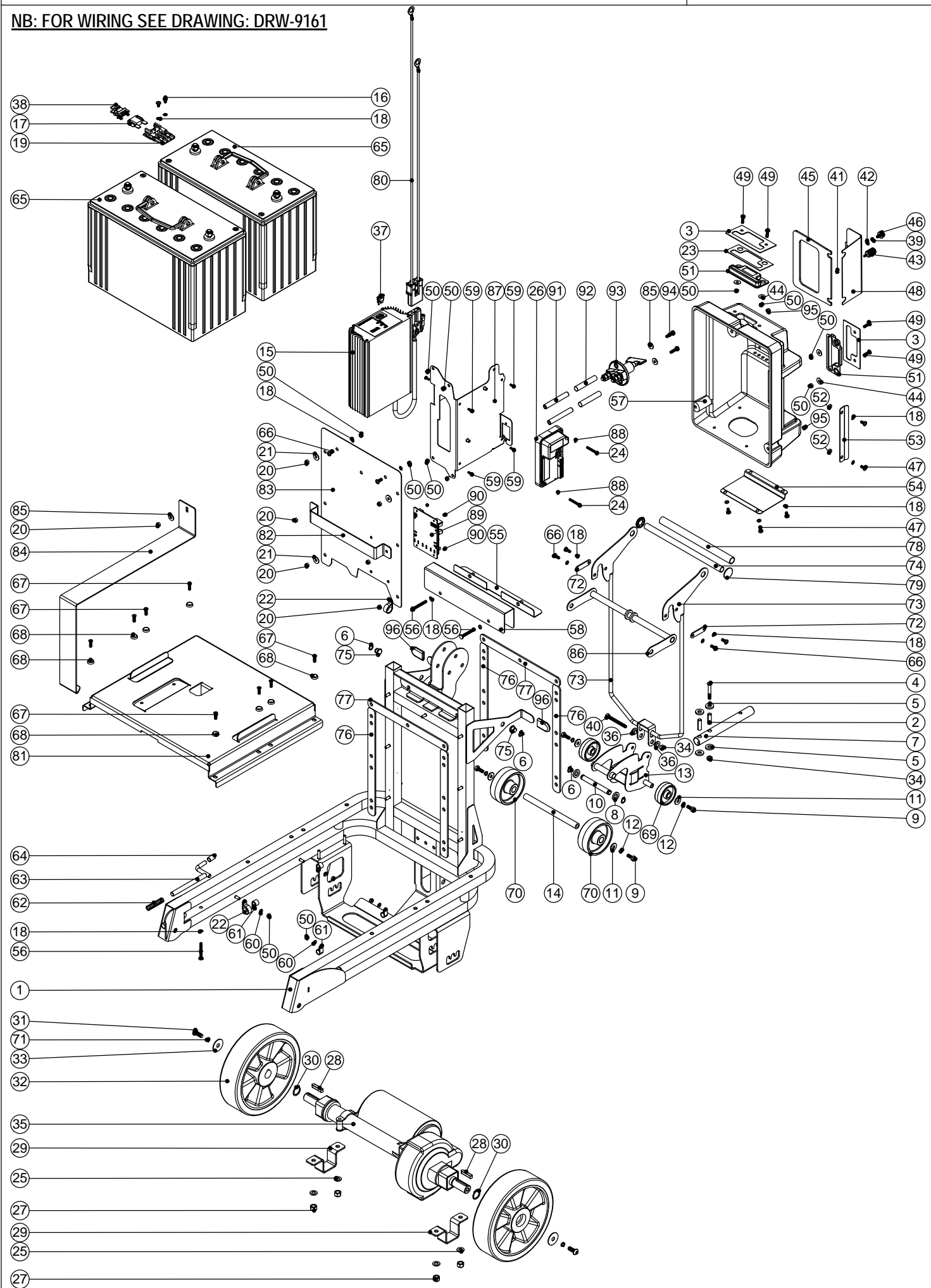
ITEM:	PART No:	DESCRIPTION	COMMENTS:
1	229493	SEPARATOR TOP	
2	229494	CLIP MOULDING	
3	219569	No8 X 1/2 INCH LONG POZI PAN STAINLESS STEEL PLASTITE SCREW	
4	303604	PROCESSED SEPARATOR MOULDING (S TYPE)	
5	329408	GASKET SUPPORT RING	
6	202110	SEALING GASKET	
7	219852	NO6 X 1/2 LONG POZI PAN STAINLESS STEEL SELF TAP SCREW	
8	206265	TT/B 345 BARREL FILTER	
9	206228	DRAIN HOSE CONNECTOR	
	237526	38MM RED DRAIN HOSE CONNECTOR	FOR 38MM VAC HOSE
10	219310	RUBBER WASHER	
11	206116	BLACK NUT	
12	229488	BLUE TOP TANK	TT3450S/TTB3450S/TTB3450C/TT3450C/TTB3450CRS/TTB3450 (POWER ELECTRONICS)
	229490	BLUE TOP TANK	TT4550S/TTB4500S/TTB4552S/TT4500/TTB4500/100ST TTB4552/100ST
13	207000	GRIT FILTER BASKET	
14	229762	HOSE CLIP MOULDING	
15	219668	M5 X 10MM LONG POZI PAN STAINLESS STEEL SCREW	
16	206842	420MM LONG BLACK STRETCH HOSE C/W CUFFS	
17	206111	HOSE CLOSURE	
18	219674	30/40MM DIAMETER STAINLESS STEEL JUBILEE CLIP	
19	219016	M5 SHAKEPROOF WASHER	
20	229491	BLUE BOTTOM TANK	TT3450S
	229489	BLUE BOTTOM TANK	TTB4500S/TTB4552S/TTB4500/100ST/TTB4552/100ST
	229536	BLUE BOTTOM TANK	TT4550S/TTB4500S
	229487	BLUE BOTTOM TANK	TTB3450S/TTB3450C/TT3450C/TTB3450CRS/TTB3450 (POWER ELECTRONICS)
21	229282	FILTER CAP	
22	219452	100MM DIAMETER HOLE PLUG	
23	219688	M4 FORM A STAINLESS STEEL WASHER	
24	219665	TOOL CLIP	
25	219697	M4 X 8MM LONG POZI PAN STAINLESS STEEL SCREW	
26	206597	TANK TAP	
27	219974	BONDED WASHER 5/8 BSP NON S/C	
28	206274	FILTER CONNECTOR	
29	219626	23MM I/D X 2.5MM SECTION O RING	
30	213025	600MM - 630MM LONG DUMP HOSE ASSEMBLY	
31	206697	1300MM LONG SUCTION HOSE	TTB3450 (POWER ELECTRONICS)/TTB3450S/TTB4500S/TTB4552S (VAC HOSE)
	206698	1300MM LONG SUCTION HOSE	TTB3450C/TT3450C (VAC HOSE)
	206696	1500MM LONG SUCTION HOSE	TT3450S/TT4500S/TT4550S (VAC HOSE)
	329787	1600MM LONG SUCTION HOSE	TTB4500/100ST / TTB4552/100ST (VAC HOSE)
	329786	1.85 METER LONG X 32MM DIAMETER SUCTION HOSE	TTB-3450CRS (VAC HOSE)
32	206698	1500MM LONG SUCTION HOSE	ALL MACHINES:EXCEPT TTB3450C (FLOOR TOOL HOSE)
	329786	1.85 METER LONG X 32MM DIAMETER SUCTION HOSE	TTB3450C & TT3450C (FLOOR TOOL HOSE)
33	206512	HOSE HOOK	ALL MACHINES EXCEPT TTB3450C
34	237220	38/32MM ADAPTOR	ALL MACHINES EXCEPT TTB3450C
35	237090	SEPARATOR FLOAT MOULDING (MK 2)	
36	219568	No8 X 3/4 INCH LONG POZI PAN STAINLESS STEEL SCREW	

Numatic International Spare Parts

Model No:TTB4550/100ST (Power Electronics) Chassis/Charger/Battery Assy

234811
DRAWING: DRW-9835 ISS: A02
17/10/2011

NB: FOR WIRING SEE DRAWING: DRW-9161



Numatic International Spare Parts

Model No:TTB4550/100ST (Power Electronics) Chassis/Charger/Battery Assy

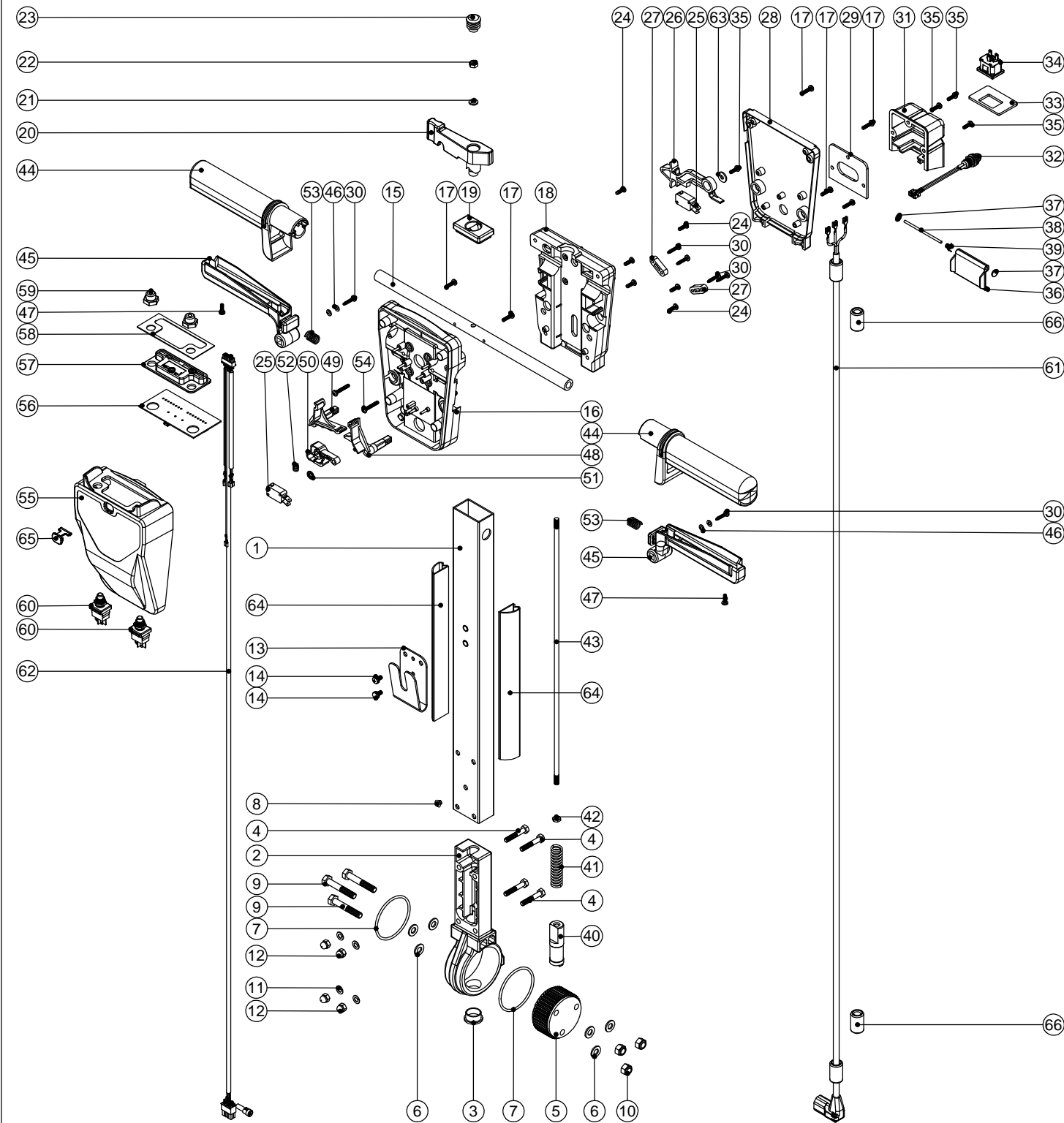
POS:	ITEM NO:	DESCRIPTION:	COMMENTS:
1	303996	NUTSERTED TTB4550/100ST STAINLESS STEEL WELDED TRACTION CHASSIS ASSEMBLY	
2	206954	SPIRO SPACER	
3	329445	LENS COVER PLATE	
4	219807	M6 X 40MM LONG SOCKET BUTTON HEAD BOLT	
5	206964	SLIDE NYLON SPACER	
6	219586	10MM EXTERNAL CIRCLIP	
7	303902	FLOOR TOOL PIVOT TUBE	
8	219964	NYLON WASHER (18MM O/D X 10.4MM I/D X 3MM THICK)	
9	219719	M6 X 16MM LONG HEXAGONAL STAINLESS STEEL HEAD BOLT	
10	208180	CHARIOT PIVOT TUBE	
11	219647	M6 FORM G STAINLESS STEEL WASHER	
12	219718	M6 STAINLESS STEEL SPRING WASHER	
13	303901	FLOOR TOOL CONNECTOR WELDED ASSEMBLY	
14	208181	TAPPED REAR AXLE	
15	230140	230V/24V/10 AMP HF NORD CHARGER (D11 REMOVED & REPLCED WITH LINK WIRE)	
	230141	115V/24V/10 AMP HF NORD CHARGER (D11 REMOVED & REPLCED WITH LINK WIRE)	
16	219864	M5 X 8MM LONG POZI PAN SCREW	
17	221107	50 AMP MAXI FUSE (RED)	
18	219016	M5 SHAKEPROOF WASHER	
19	230102	FUSE HOLDER RATED AT 60 AMPS	
20	219076	M5 NYLON INSERT NUT	
21	219497	M5 NYLON WASHER	
22	219514	P-CLIP	
23	220725	SELF ADHESIVE LENS GASKET	
24	219913	M4 X 30MM LONG POZI PAN STAINLESS STEEL SCREW	
25	219578	M8 FORM A STAINLESS STEEL WASHER	
26	330036	PROGRAMMED MOTOR CONTROLLER	
27	219639	M8 STAINLESS STEEL NYLON INSERT NUT	
28	206744	6MM X 6MM X 32MM FEATHER KEY	
29	329780	TRANSAXLE CLAMP	
30	219889	19MM HEAVY DUTY CIRCLIP	
31	219823	M8 X 20MM LONG STAINLESS STEEL SOCKET BUTTON HEAD BOLT	
32	206727	200MM DIAMETER X 50MM WIDE ALLOY WHEEL	
33	219877	M8 X 30 STAINLESS STEEL WASHER	
34	219642	M6 STAINLESS STEEL NYLON INSERT NUT	
35	206877	TRANSAXLE (C/W SHORTER LEAD & NO BRAKE)	
36	219417	UNIFIED M/C SCREW INSULATOR	
37	221037	20 AMP FUSE	
38	230112	MAXI FUSE PULLER	
39	219721	M5 STAINLESS STEEL FULL NUT	
40	219224	M6 X 55MM LONG HEX HEAD BOLT	
41	219687	M4 STAINLESS STEEL NYLON INSERT NUT	
42	206667	M5 RETAINING WASHER	
43	219738	M4 KNOB	
44	219644	M5 FORM G STAINLESS STEEL WASHER	
45	202117	FUSE COVER GASKET	
46	206666	M5 KNURLED KNOB	
47	219668	M5 X 10MM LONG POZI PAN STAINLESS STEEL SCREW	
48	329435	FUSE COVER PLATE	
49	219547	M5 X 16MM LONG POZI PAN STAINLESS STEEL SCREW	
50	219633	M5 STAINLESS STEEL NYLON INSERT NUT	
51	206664	LENS MOULDING (NO PRINT)	
52	219867	NYLON SPACER	
53	329452	FUSE COVER RETAINING PLATE	
54	329440	EXHAUST COVER PLATE	
55	303631	NUTSERTED SPLASH GAURD	
56	21932V	M5 X 40MM LONG POZI PAN SCREW	
57	229550	PROCESSED ENCLOSURE BOX	
58	329447	COVER PLATE	
59	219301	No6 X 3/8 INCH LONG POZI PAN SELF TAP SCREW	
60	219355	M5 FORM A STAINLESS STEEL WASHER	
61	219393	P CLIP	
62	219873	COMPRESSION SPRING (STAINLESS STEEL)	
63	303483	LOCKING BAR WELDED ASSEMBLY	
64	229240	END TIP	
65	205112	100 AMP/HOUR REPLACEMENT BATTERY (C/W PACKING FOR 230138 BATTERY)	
66	219740	M5 X 12MM LONG STAINLESS STEEL POZI PAN SCREW	
67	219572	M5 X 16MM LONG POZI PAN COUNTERSUNK STAINLESS STEEL SCREW	
68	219573	SCREW INSULATOR	
69	206712	50MM DIAMETER BLACK WHEEL	
70	206713	80MM DIAMETER BLACK WHEEL	
71	219019	M8 COIL WASHER	
72	329395	FIXING BRACKET	
73	303595	FLOOR TOOL LIFTING FRAME	
74	391037	235MM LONG X 1/2 INCH DIAMETER X 18G STAINLESS STEEL TUBE	
75	206647	PIVOT BUSH	
76	202112	CHASSIS GASKET - VERTICAL	
77	202113	CHASSIS GASKET - HORIZONTAL	
78	391038	218MM LONG BLACK NYLON TUBE	
79	204021	12.7MM STAINLESS STEEL HUB CAP	
80	321547	DC CHARGING LEAD (POWER ELECTRONICS)	
81	404091	TWINTC BATTERY TRAY - PAINTED SILVER	
82	404094	BATTERY SUPPORT BRACKET PAINTED	
83	304275	POWER ELECTRONICS BACK PLATE WELDED ASSEMBLY (PAINTED SILVER GREY) C/W PEMS STUDS	
84	404023	BATTERY STRAP (PAINTED SILVER)	
85	219005	M5 FORM G WASHER	
86	303594	FLOOR TOOL PIVOT LINK ASSEMBLY	
87	304276	NUTSERTED CHARGER MOUNTING BRACKET	
88	219015	M4 SHAKEPROOF WASHER	
89	208248	DC DRIVE PCB 2V VOLT ASSEMBLED	
90	219070	M3 NYLON INSERT NUT	
91	208507	70MM LONG ALUMINIUM SPACER	
92	321633	60MM LONG X 10MM I/D BLACK PVC SLEEVING	
93	206746	MASTER KEY SWITCH & KEY	
94	219546	M5 X 20MM LONG POZI PAN SEMS SCREW	
95	219645	M5 STAINLESS STEEL DOME NUT	
96	391146	35MM LONG FOOT LATCH COVER	

Numatic International Spare Parts

Model No: TTB4550/100S (Power Electronics) Handle Assembly

234845
DRAWING: DRW-10871 ISS: A01
29/11/2011

NB: FOR WIRING SEE DRAWING: DRW-5558



Numatic International Spare Parts

Model No: TTB4550/100S (Power Electronics) Handle Assembly

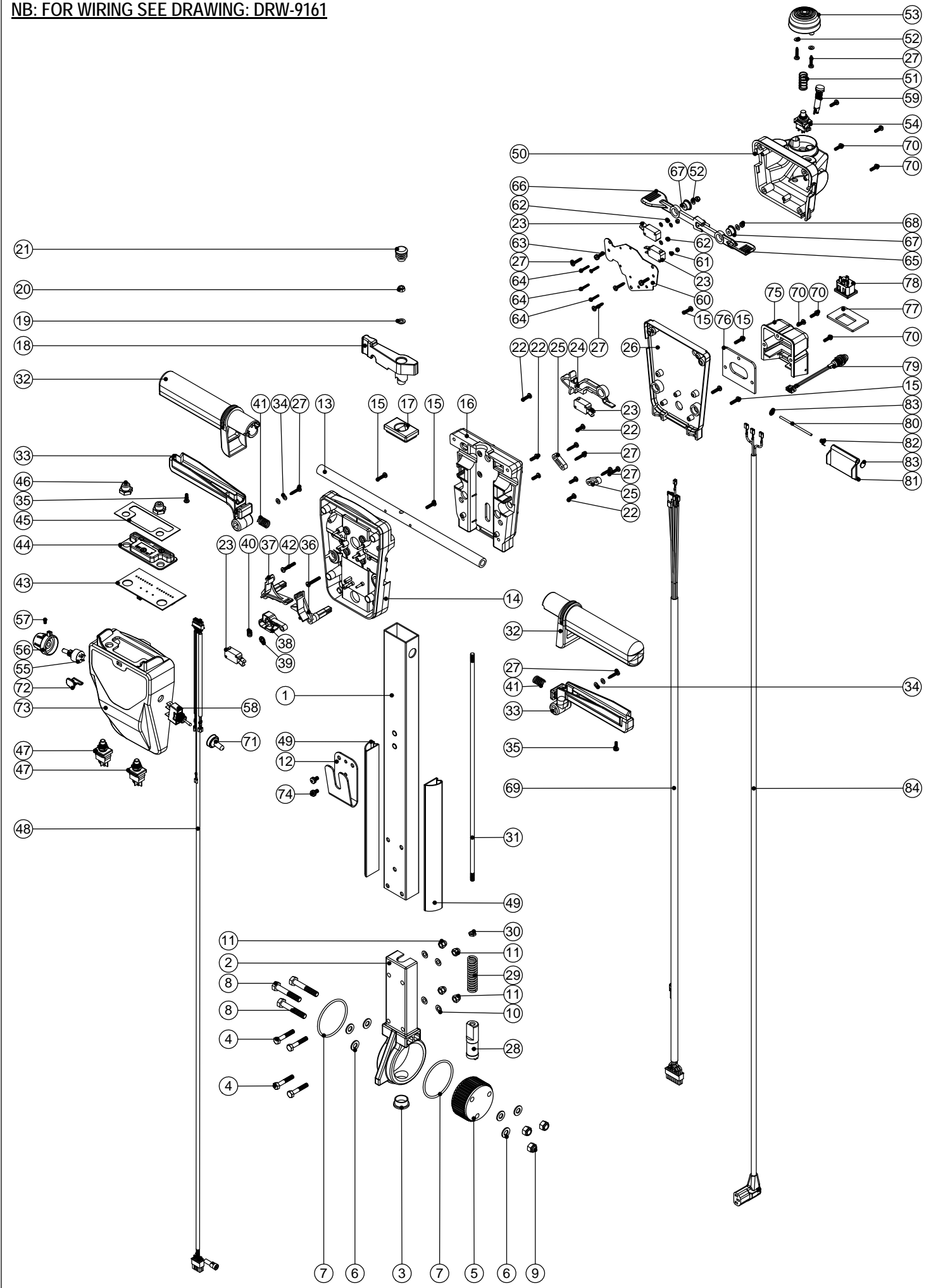
POS:	ITEM NO:	DESCRIPTION:	COMMENTS:
1	429074	430MM PAINTED PROCESSED ALUMINIUM HANDLE	
2	229081	HANDLE CASTING MACHINED	
3	229099	25MM DIA HOLE PLUG	
4	219064	M6 X 35MM LONG HEX BOLT	
5	229074	ADJUSTMENT GEAR	
6	219010	M8 FORM A WASHER	
7	219254	O RING 3MM DIA X 60MM I/D	
8	229009	BLANKING PLUG	
9	219091	M8 X 50MM LONG HEX BOLT	
10	219078	M8 NYLON INSERT NUT	
11	219007	M6 FORM B WASHER	
12	219080	M6 DOMENUT	
13	329397	SEPARATOR HANGING BRACKET	
14	219047	M5 X 10MM LONG POZI PAN SEMS SCREW	
15	338269	CROSS TUBE	
16	227576	FRONT INNER HALF MOULDING	STANDARD VERSION
	229508	FRONT INNER HALF MOULDING	FLAME RETARDANT 120V
17	219105	No8 X 5/8 INCH LONG POZI PAN PLASTITE SCREW	
18	227577	REAR INNER HALF MOULDING	STANDARD VERSION
	229509	REAR INNER HALF MOULDING	FLAME RETARDANT 120V
19	227582	HANDLE PLUG MOULDING	
20	227583	ADJUSTMENT LEVER MOULDING	
21	219493	M6 NYLON WASHER	
22	219642	M6 STAINLESS STEEL NYLON INSERT NUT	
23	20638V	19MM BLACK TUBE END STOP	
24	219101	No8 X 1/2 INCH LONG POZI PAN PLASTITE SCREW	
25	229483	SNAP ACTION SWITCH	
26	227584	INTERLOCK LEVER MOULDING	
27	227008	BLACK CABLE CLAMP	
28	303509	MODIFIED REAR COVER	STANDARD VERSION
	303628	MODIFIED REAR COVER	FLAME RETARDANT 120V
29	202105	SOCKET COVER SEALING GASKET	
30	219107	No6 X 5/8 INCH LONG POZI PAN PLASTITE SCREW	
31	329355	SOCKET COVER DRILLED	
32	270193	NEON INDICATOR RED LENS 230V C/W LINK WIRES	
	270195	NEON INDICATOR RED LENS 120V C/W LINK WIRES	
33	329297	SOCKET MOUNTING PLATE	
34	220391	3 PIN APPLIANCE SOCKET	
35	219601	No8 X 3/8 INCH LONG POZI PAN PLASTITE SCREW	
36	227781	FLAP MOULDING	
37	219832	3MM DIAMETER STARLOCK	
38	390979	72MM LONG X 3MM DIAMETER STAINLESS STEEL BAR	
39	219819	TORSION SPRING	
40	229073	GEAR LOCKING PIN	
41	229138	SPRING	
42	219099	M6 HALF NUT	
43	229461	440MM HANDLE LOCKING ROD	
44	227580	HAND GRIP MOULDING	
45	229500	TRIGGER MOULDING BLUE	
46	219206	M4 FORM A WASHER	
47	219270	No8 X 1/2 INCH LONG POZI PAN SELF TAP SCREW	
48	227585	LEFT HAND SWITCH OPERATING LEVER MOULDING	
49	227586	RIGHT HAND SWITCH OPERATING LEVER MOULDING	
50	227587	CENTRE SWITCH OPERATING LEVER MOULDING	
51	219805	4MM SPIREFIX	
52	219804	SWITCH COMPRESSION SPRING	
53	219803	TRIGGER COMPRESSION SPRING	
54	219811	NO8 X 1 INCH LONG POZI-PAN SELF TAP SCREW	
55	229760	TRACTION DRIVE FRONT COVER MOULDING (USB PLUG HOLE)	STANDARD VERSION
	229761	TRACTION DRIVE FRONT COVER MOULDING (USB PLUG HOLE)	FLAME RETARDANT 120V
56	208255	TTB4550 & TTB4550/100ST CONTROL PCB (WEB SERVICE ENABLED) (CONTACTOR LESS VERSION)	
57	206646	LENS MOULDING	
58	220725	SELF ADHESIVE LENS GASKET	
59	220600	SWITCH COVER	
60	220597	PUSH BUTTON SWITCH	
61	321132	AC CHARGING LEAD ASSEMBLY C/W 2 FERRITES	
62	321641	POWER ELECTRONICS HANDLE HARNESS	
63	219005	M5 FORM G WASHER	
64	391074	230MM LONG CUT SELF ADHESIVE CABLE DUCTING	
65	229743	USB PLUG MOULDING	
66	230097	AXIAL FERRITE BEAD	

Numatic International Spare Parts

Model No: TTB4550/100ST (Power Electronics) Handle Assembly

234810
DRAWING: DRW-9732 ISS:A02
07/06/2011

NB: FOR WIRING SEE DRAWING: DRW-9161



Numatic International Spare Parts

Model No: TTB4550/100ST (Power Electronics) Handle Assembly

POS:	ITEM NO:	DESCRIPTION:	COMMENTS:
1	429074	430MM PAINTED PROCESSED ALUMINIUM HANDLE	
2	229081	HANDLE CASTING MACHINED	
3	229099	25MM DIA HOLE PLUG	
4	219064	M6 X 35MM LONG HEX BOLT	
5	229074	ADJUSTMENT GEAR	
6	219010	M8 FORM A WASHER	
7	219254	O RING 3MM DIA X 60MM I/D	
8	219091	M8 X 50MM LONG HEX BOLT	
9	219078	M8 NYLON INSERT NUT	
10	219007	M6 FORM B WASHER	
11	219080	M6 DOMENUT	
12	329397	SEPARATOR HANGING BRACKET	
13	338269	CROSS TUBE	
14	227576	FRONT INNER HALF MOULDING	
	229508	FRONT INNER HALF MOULDING	CSA 120V FLAME RETARDENT
15	219105	No8 X 5/8 INCH LONG POZI PAN PLASTITE SCREW	
16	227577	REAR INNER HALF MOULDING	
	229509	REAR INNER HALF MOULDING	CSA 120V FLAME RETARDENT
17	227582	HANDLE PLUG MOULDING	
18	227583	ADJUSTMENT LEVER MOULDING	
19	219493	M6 NYLON WASHER	
20	219642	M6 STAINLESS STEEL NYLON INSERT NUT	
21	20638V	19MM BLACK TUBE END STOP	
22	219101	No8 X 1/2 INCH LONG POZI PAN PLASTITE SCREW	
23	229483	SNAP ACTION SWITCH	
24	227584	INTERLOCK LEVER MOULDING	
25	227008	BLACK CABLE CLAMP	
26	303776	PROCESSED TRACTION DRIVE REAR HANDLE COVER (C/W HOLE)	
	303777	PROCESSED TRACTION DRIVE REAR HANDLE COVER (C/W HOLE)	CSA 120V FLAME RETARDENT
27	219107	No6 X 5/8 INCH LONG POZI PAN PLASTITE SCREW	
28	229073	GEAR LOCKING PIN	
29	229138	SPRING	
30	219099	M6 HALF NUT	
31	229461	440MM HANDLE LOCKING ROD	
32	227580	HAND GRIP MOULDING	
33	229500	TRIGGER MOULDING BLUE	
34	219206	M4 FORM A WASHER	
35	219270	No8 X 1/2 INCH LONG POZI PAN SELF TAP SCREW	
36	227585	LEFT HAND SWITCH OPERATING LEVER MOULDING	
37	227586	RIGHT HAND SWITCH OPERATING LEVER MOULDING	
38	227587	CENTRE SWITCH OPERATING LEVER MOULDING	
39	219805	4MM SPIREFIX	
40	219804	SWITCH COMPRESSION SPRING	
41	219803	TRIGGER COMPRESSION SPRING	
42	219811	NO8 X 1 INCH LONG POZI-PAN SELF TAP SCREW	
43	208255	TTB4550 & TTB4550/100ST CONTROL PCB (WEB SERVICE ENABLED) (CONTACTOR LESS VERSION)	
44	206646	LENS MOULDING	
45	220725	SELF ADHESIVE LENS GASKET	
46	220600	SWITCH COVER	
47	220597	PUSH BUTTON SWITCH	
48	321641	POWER ELECTRONICS HANDLE HARNESS	
49	391074	230MM LONG CUT SELF ADHESIVE CABLE DUCTING	
50	237315	TWINTec HANDLE REAR POD MOULDING (LESS SPEED CONTROL / DIRECTIONAL SWITCH HOLES)	
51	219816	COMPRESSION SPRING	
52	219688	M4 FORM A STAINLESS STEEL WASHER	
53	227683	EMERGENCY STOP BUTTON	
54	270295	PUSH BUTTON SWITCH	
55	270294	POTENTIOMETER	
56	329363	SPEED ADJUSTMENT KNOB C/W INSERT	
57	219744	M4 X 6MM LONG BLACKODISED GRUB SCREW	
58	206786	SWITCH	
59	270291	GREEN LED INDICATOR 2V C/W 2.2K RESISTOR	
60	329298	DIRECTION TRIGGER MOUNTING PLATE	
61	219501	M3 FORM A STAINLESS STEEL WASHER	
62	219070	M3 NYLON INSERT NUT	
63	219472	M4 X 16MM LONG POZI PAN SEMS SCREW	
64	219500	M3 X 16MM LONG STAINLESS STEEL SLOT SCREW	
65	227684	LEFT HAND DIRECTION TRIGGER	
66	227685	RIGHT HAND DIRECTION TRIGGER	
67	206579	SHOULDERED SPACER	
68	219687	M4 STAINLESS STEEL NYLON INSERT NUT	
69	321640	POWER ELECTRONICS TRACTION HARNESS	
70	219601	No8 X 3/8 INCH LONG POZI PAN PLASTITE SCREW	
71	206785	SWITCH COVER C/W NUT	
72	229743	USB PLUG MOULDING	
73	330052	PROCESSED TWINTec TRACTION DRIVE FRONT COVER MOULDING	
	330053	PROCESSED TWINTec TRACTION DRIVE FRONT COVER MOULDING	CSA 120V FLAME RETARDENT
74	219047	M5 X 10MM LONG POZI PAN SEMS SCREW	
75	329355	SOCKET COVER MOULDING C/W LARGE MOULDED HOLE (WITH PROCESSED HOLES)	
	303629	SOCKET COVER MOULDING C/W LARGE MOULDED HOLE (WITH PROCESSED HOLES)	CSA 120V FLAME RETARDENT
76	202105	SOCKET COVER SEALING GASKET	
77	329297	SOCKET MOUNTING PLATE	
78	220391	3 PIN APPLIANCE SOCKET	
79	270193	NEON INDICATOR RED LENS 230V C/W LINK WIRES	
	270195	NEON INDICATOR RED LENS 120V C/W LINK WIRES	
80	390979	72MM LONG X 3MM DIAMETER STAINLESS STEEL BAR	
81	227781	FLAP MOULDING	
82	219819	TORSION SPRING	
83	219832	3MM DIAMETER STARLOCK	
84	321344	AC CHARGING LEAD ASSEMBLY	
	321345	CSA AC CHARGING LEAD ASSEMBLY	120V MACHINES