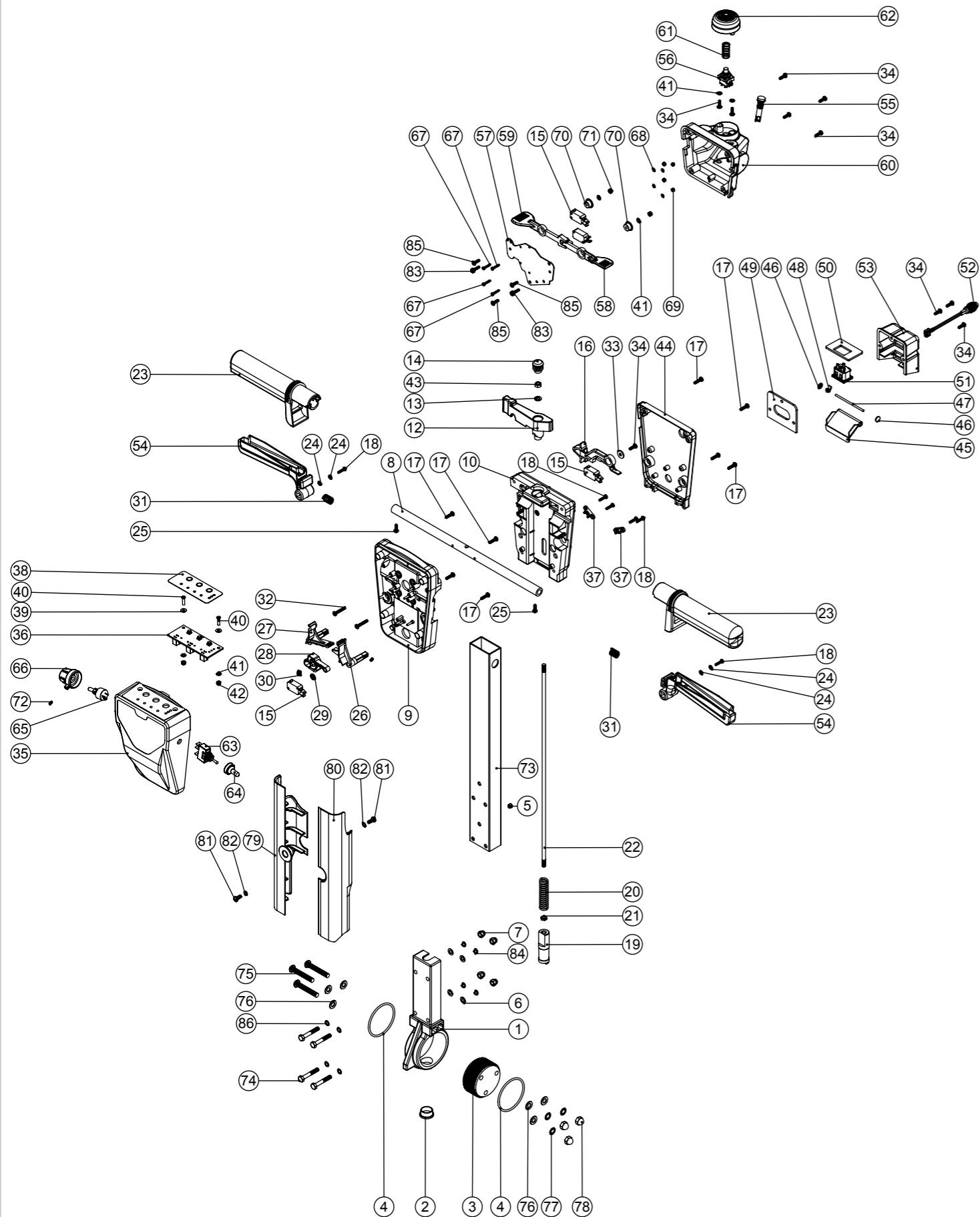


# Numatic International Spare Parts

**Model No:** TTB4055/100T(TTB1120T) & TTB4552/100T HANDLE ASSEMBLY

234942  
DRAWING: DRW-13429 ISS:A04  
19/12/2014

NB: FOR WIRING SEE DRAWING: DRW-17326, DRW-17323



# Numatic International Spare Parts

**Model No:** TTB4055/100T(TTB1120T) & TTB4552/100T HANDLE ASSEMBLY

ITEM:	PART No:	Description	Comments:	QTY.
1	229081	HANDLE CASTING MACHINED		1
2	229099	25MM DIA HOLE PLUG		1
3	229074	ADJUSTMENT GEAR		1
4	219254	O RING 3MM DIA X 60MM I/D		2
5	229009	BLANKING PLUG		1
6	219560	M6 FORM B STAINLESS STEEL WASHER		4
7	219764	M6 STAINLESS STEEL DOME NUT		4
8	338269	CROSS TUBE		1
9	227576	FRONT INNER HALF MOULDING	STANDARD MACHINES	1
	229508	FRONT INNER HALF MOULDING	FLAME RETARDANT 120V	1
10	227577	REAR INNER HALF MOULDING	STANDARD MACHINES	1
	229509	REAR INNER HALF MOULDING	FLAME RETARDANT 120V	1
11	227582	HANDLE PLUG MOULDING		1
12	227583	ADJUSTMENT LEVER MOULDING		1
13	219493	M6 NYLON WASHER		1
14	20638V	19MM BLACK TUBE END STOP		1
15	229483	SNAP ACTION SWITCH		4
16	227584	INTERLOCK LEVER MOULDING		1
17	219105	No8 X 5/8 INCH LONG POZI PAN PLASTITE SCREW		8
18	219107	No6 X 5/8 INCH LONG POZI PAN PLASTITE SCREW		6
19	229073	GEAR LOCKING PIN		1
20	229138	SPRING		1
21	219099	M6 HALF NUT		1
22	229461	440MM HANDLE LOCKING ROD		1
23	227580	HAND GRIP MOULDING		2
24	219206	M4 FORM A WASHER		4
25	219270	No8 X 1/2 INCH LONG POZI PAN SELF TAP SCREW		2
26	227585	LEFT HAND SWITCH OPERATING LEVER MOULDING		1
27	227586	RIGHT HAND SWITCH OPERATING LEVER MOULDING		1
28	227587	CENTRE SWITCH OPERATING LEVER MOULDING		1
29	219805	4MM SPIREFIX		1
30	219804	SWITCH COMPRESSION SPRING		1
31	219803	TRIGGER COMPRESSION SPRING		2
32	219811	NO8 X 1 INCH LONG POZI-PAN SELF TAP SCREW		2
33	219005	M5 FORM G WASHER		1
34	219601	No8 X 3/8 INCH LONG POZI PAN PLASTITE SCREW		10
35	237364	TTB4055T TRACTION DRIVE FRONT COVER MOULDING HI LO (STANDARD MATERIAL)	STANDARD MACHINES	1
	237454	TTB4055T TRACTION DRIVE FRONT COVER MOULDING HI LO (FLAME RETARDANT MATERIAL)	FLAME RETARDANT 120V	1
36	208602	TTB3450 STYLE CONTROL PCB		1
37	229669	LOLINE HANDLE CABLE CLAMP		2
38	208622	CONTROL PANEL OVERLAY HI LO		1
39	208521	NYLON WASHER 10.0 OD X 4.1 ID X 1.0MM		2
40	219407	M4 X 16MM LONG POZI PAN COUNTERSUNK SCREW		2
41	219688	M4 FORM A STAINLESS STEEL WASHER		6
42	219083	M4 NYLON INSERT NUT		2
43	219642	M6 STAINLESS STEEL NYLON INSERT NUT		1
44	303776	PROCESSED TRACTION DRIVE REAR HANDLE COVER (C/W HOLE)	STANDARD MACHINES	1
	303777	PROCESSED TRACTION DRIVE REAR HANDLE COVER (C/W HOLE)	FLAME RETARDANT 120V	1
45	227781	FLAP MOULDING		1
46	219832	3MM DIAMETER STARLOCK		2
47	390979	72MM LONG X 3MM DIAMETER STAINLESS STEEL BAR		1
48	219819	TORSION SPRING		1
49	202105	SOCKET COVER SEALING GASKET		1
50	329297	SOCKET MOUNTING PLATE		1
51	220391	3 PIN APPLIANCE SOCKET		1
52	270193	NEON INDICATOR RED LENS 230V C/W LINK WIRES		1
	270195	NEON INDICATOR RED LENS 120V C/W LINK WIRES		1
53	329355	SOCKET COVER MOULDING C/W LARGE MOULDED HOLE (WITH PROCESSED HOLES)	STANDARD MACHINES	1
	303629	SOCKET COVER MOULDING C/W LARGE MOULDED HOLE (WITH PROCESSED HOLES)	FLAME RETARDANT 120V	1
54	229500	TRIGGER MOULDING BLUE		2
55	270291	GREEN LED INDICATOR 2V C/W 2.2K RESISTOR		1
56	270295	PUSH BUTTON SWITCH		1
57	329298	DIRECTION TRIGGER MOUNTING PLATE		1
58	227684	LEFT HAND DIRECTION TRIGGER		1
59	227685	RIGHT HAND DIRECTION TRIGGER		1
60	237315	TWINTEC HANDLE REAR POD MOULDING (LESS SPEED CONTROL / DIRECTIONAL SWITCH HOLES)		1
61	219816	COMPRESSION SPRING		1
62	227683	EMERGENCY STOP BUTTON		1
63	206786	SWITCH		1
64	206785	SWITCH COVER C/W NUT		1
65	270316	POTENTIOMETER TYPE Pe30 22k OHMS 20% 3W (WITH PANEL SEAL) (ROUND SHAFT WITH FLAT / NO SLOT IN SHAFT END)		1
66	329363	SPEED ADJUSTMENT KNOB C/W INSERT		1
67	219500	M3 X 16MM LONG STAINLESS STEEL SLOT SCREW		4
68	219501	M3 FORM A STAINLESS STEEL WASHER		4
69	219070	M3 NYLON INSERT NUT		4
70	206579	SHOULDERED SPACER		2
71	219687	M4 STAINLESS STEEL NYLON INSERT NUT		2
72	219744	M4 X 6MM LONG BLACKODISED GRUB SCREW		2
73	330231	TTB/TT 430MM PROCESSED ALI HANDLE PAINT GREY		1
74	291125	M6 X 40 LONG HEX BOLT STAINLESS STEEL		4
75	219922	M8 X 50MM LONG SOCKET BUTTON HEAD STAINLESS STEEL BOLT		3
76	219578	M8 FORM A STAINLESS STEEL WASHER		6
77	219018	M8 SHAKEPROOF WASHER		3
78	219632	M8 STAINLESS STEEL DOME NUT		3
79	237692	HANDLE CABLE COVER L/H		1
80	237693	HANDLE CABLE COVER R/H		1
81	219740	M5 X 12MM LONG STAINLESS STEEL POZI PAN SCREW		2
82	291084	WASHER.M5.SHAKEPROOF.STAINLESS STEEL		2
83	219472	M4 X 16MM LONG POZI PAN SEMS SCREW		2
84	219718	M6 STAINLESS STEEL SPRING WASHER		4
85	219101	No8 X 1/2 INCH LONG POZI PAN PLASTITE SCREW		3
86	219544	M6 SHAKEPROOF WASHER		4





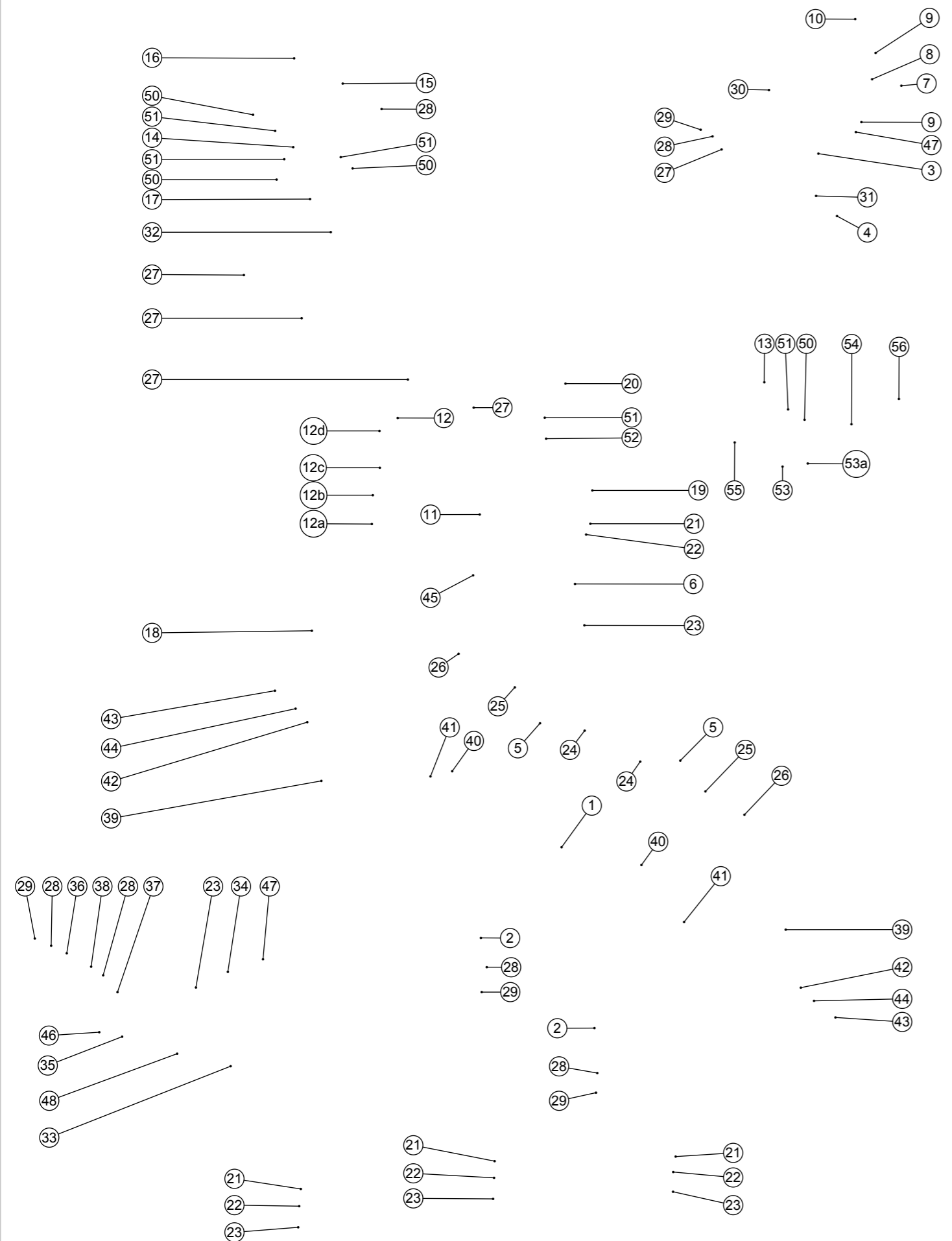


# Numatic International Spare Parts

**Model No:** TTB4055/100T(TTB1120T) CHASSIS ASSEMBLY

Internal Code: 234944  
 DRAWING: DRW-15413 ISS:A03  
 PRO 29/06/2015

NB: FOR WIRING SEE DRAWING: DRW-17326, DRW-18550



# Numatic International Spare Parts

**Model No:** TTB4055/100T(TTB1120T) CHASSIS ASSEMBLY

ITEM:	PART No:	Description	Comments:	QTY.
1	321685	465MM LONG ASI TRANSAXLE C/W SHORTNED 460MM WIRES		1
2	329497	TRANSAXLE MOUNTING BRACKET		2
3	304359	TTB/TTB/4045/4055 SQUEEGEE MOUNT WELD ASSEMBLY		1
4	237632	SHOULDER BOLT COVER		1
5	206713	80MM DIAMETER BLACK WHEEL		2
6	304519	TTB TRANSPORT WHEEL BRACKET WELD ASSEMBLY		1
7	304356	FLOOR TOOL PIVOT TUBE		1
8	206954	SPIRO SPACER		2
9	206964	SLIDE NYLON SPACER		4
10	291125	M6 X 40 LONG HEX BOLT STAINLESS STEEL		1
11	392199	FILTER BRACKET		1
12	208888	EXTENDED STRAINER		1
12a	208890	EXTENDED STRAINER CLEAR BOWL		1
12b	208830	STRAINER GASKET		1
12c	208889	EXTENDED STRAINER 50 MESH SCREEN		1
12d	208827	STRAINER BLACK TOP		1
13	304453	NUTSERTED 10MM TAP BRACKET		1
14	304409	NUTSERTED DECK LOCK BAR GUIDE		1
15	208578	DECK LOCK SPRING		1
16	304358	DECK LOCK BAR WELD ASSEMBLY		1
17	304411	NUTSERTED LOCK BAR CLAMP		1
18	391216	SILICON TUBE 600MM LONG X 8MM I/D X 3.2MM WALL SECTION		1
19	330230	SILICON TUBE 8MM I/D X 3.2MM WALL SECTION (CUT 400MM)		1
20	321902	SILENCER CLAMP		1
21	219647	M6 FORM G STAINLESS STEEL WASHER		7
22	219718	M6 STAINLESS STEEL SPRING WASHER		7
23	219719	M6 X 16MM LONG HEXAGONAL STAINLESS STEEL HEAD BOLT		9
24	219649	M10 NYLON INSERT NUT		2
25	391440	1/2 INCH X 18G X 41MM LONG STAINLESS STEEL SPACER TUBE		2
26	219894	M10 X 60MM LONG HEXAGONAL STAINLESS STEEL BOLT		2
27	208312	IGUS BEARING (GFM 101205)		6
28	219578	M8 FORM A STAINLESS STEEL WASHER		8
29	219639	M8 STAINLESS STEEL NYLON INSERT NUT		6
30	208619	FLOOR TOOL SPRING		1
31	208574	M8 X 10 X 60MM LONG HEX SOCKET SHOULDER BOLT		1
32	900321	TTB4055 TRACTION CHASSIS WELD ASSY		1
33	219576	STAINLESS STEEL SPRING		1
34	392240	BRAKE BRACKET		1
35	392243	BRAKE BAR LOCK PLATE		1
36	304418	BRAKE LEVER LINK & PIN ASSEMBLY		1
37	219658	M8 X 22MM LONG SOCKET BOLT		1
38	219959	M8 PLASTIC WASHER		1
39	204115	200MM X 50MM TRACTION WHEEL - GREY PU TREAD COMBED PROFILE		2
40	206744	6MM X 6MM X 32MM FEATHER KEY		2
41	219889	19MM HEAVY DUTY CIRCLIP		2
42	219877	M8 X 30 STAINLESS STEEL WASHER		2
43	219823	M8 X 20MM LONG STAINLESS STEEL SOCKET BUTTON HEAD BOLT		2
44	219898	M8 SINGLE COIL STAINLESS STEEL WASHER		2
45	219633	M5 STAINLESS STEEL NYLON INSERT NUT		2
46	291004	M5 X 10MM LONG STAINLESS STEEL BUTTON HEAD SCREW		2
47	219642	M6 STAINLESS STEEL NYLON INSERT NUT		3
48	304419	BRAKE BAR WELDED ASSEMBLY		1
49	219558	M5 STAINLESS STEEL NUTSERT		5
50	219547	M5 X 16MM LONG POZI PAN STAINLESS STEEL SCREW		9
51	291084	WASHER.M5.SHAKEPROOF.STAINLESS STEEL		11
52	219740	M5 X 12MM LONG STAINLESS STEEL POZI PAN SCREW		2
53	901541	12MM SWIVEL ELBOW PUSH FIT TO 12MM PUSH FIT BALL VALVE ASSEMBLY		1
53a	901544	TAP HANDLE C/W COVER AND M3X6MM SCREW (SPARE ITEM)	SPARE ITEM	1
54	901553	NYLON TUBE 12MM OD X 10MM ID (65MM)		1
55	901534	PUSH IN BARBED CONNECTOR - 12MM OD 8MM ID		1
56	901545	ELBOW ANGLE CONNECTOR 12MM PUSH IN TO 12MM STEM		1