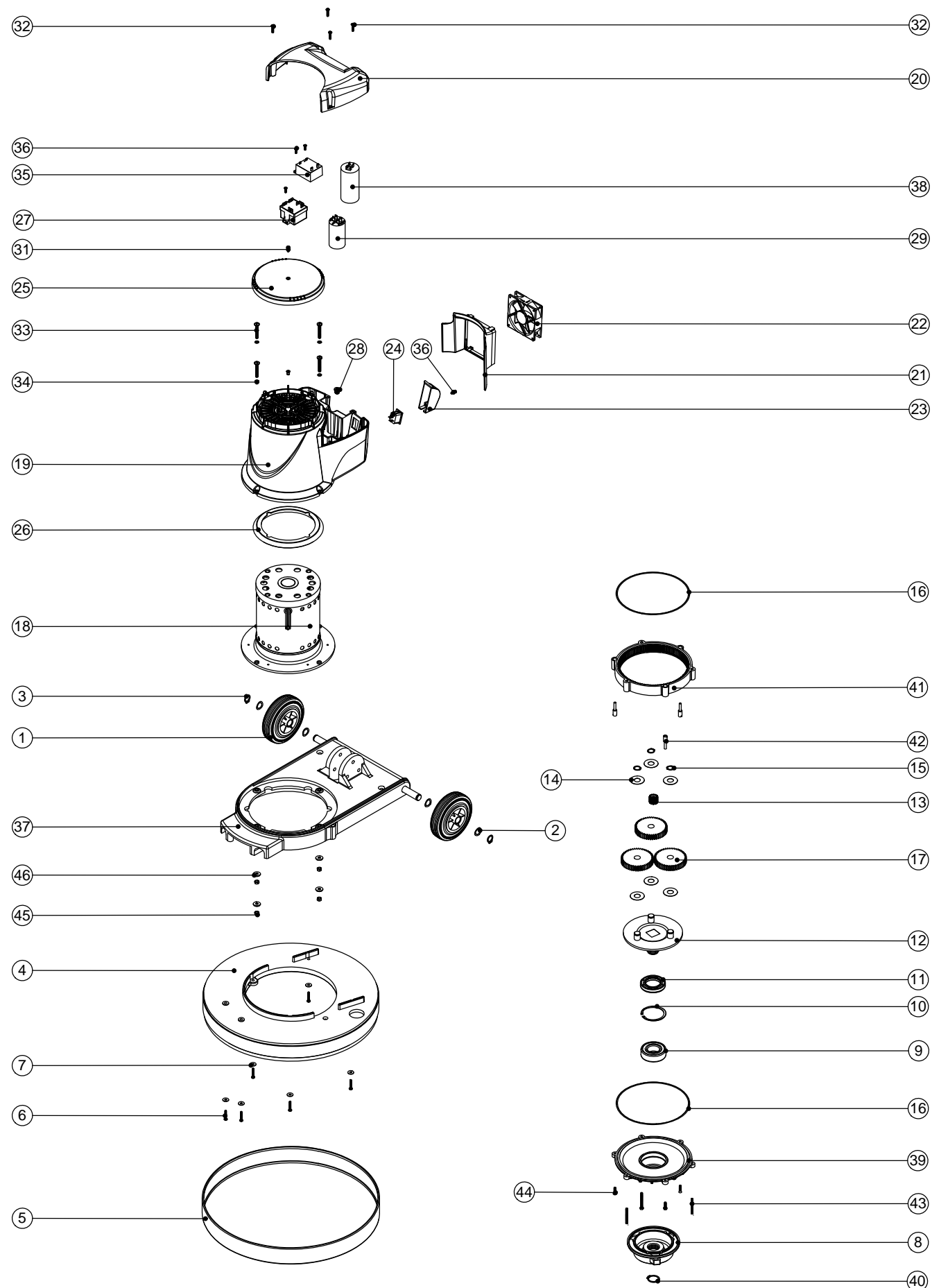


# Numatic International Spare Parts

## Model No: NPR 1515 EXPLODED DRAWING

234628  
DRAWING: EXP-1056 ISS:A01  
02/04/2009

NB. FOR WIRING SEE DRAWING WD-0369



# Numatic International Spare Parts

## Model No: NPR 1515 EXPLODED DRAWING

POS:	ITEM NO:	DESCRIPTION:	COMMENTS:
1	229060	WHEEL GREY BLACK HUB	
2	219219	21.5MM X 16.3MM WAVE WASHER	QTY OF 4
3	229051	EXTERNAL CIRCLIP	
4	237020	RING MOULD MED MULTIDECK (MID BLUE)	
5	206478	GREY MEDIUM BUFFER RING	
6	219369	No8 X 1 INCH LONG POZI PAN STAINLESS STEEL PLASTITE SCREW	
7	219644	M5 FORM G STAINLESS STEEL WASHER	
8	230059	DIE CAST CHUCK	
9	230094	62MM O/D X 30MM I/D X 20MM BEARING (WITH SEALS)	
10	230200	62MM INTERNAL CIRCLIP	
11	230069	10MM DOUBLE LIP OIL SEAL	
12	230291	PLANET CARRIER & PIN ASSEMBLY (50HZ STANDARD SPEED)	
13	230027	12 TOOTH PINION GEAR (STANDARD SPEED)	
14	230215	35MM X 15 I/D ALUMINIUM WASHER	QTY OF 6
15	230015	15MM EXTERNAL CIRCLIP	
16	230001	V OIL SEAL	
17	230013	48 TOOTH SPUR GEAR(STANDARD SPEED 50/60HZ)	
18	205217	COMBINED INDUCTION MOTOR 4POLE 220-240V 50Hz	
19	328128	NPR PRINTED MOTOR COWL MOULDING	
20	229970	LID MOULDING	
21	229972	FAN GUARD MOULDING	
22	205072	PROCESSED 12V DC BRUSHLESS FAN	
23	229213	PLUG COVER	
24	220584	RENDAR CLIP IN PLUG	
25	229971	CAP MOULDING	
26	227556	TOP MOTOR GASKET	
27	206823	230V VOLTAGE RELAY	
28	219453	M8 MULTISERT	
29	220876	20 MFD MOTOR RUN CAPACITOR (450V)	
30	219009	M4 BRASS TAPPEX INSERT	
31	219471	M4 X 12MM LONG POZI PAN SEMS SCREW	
32	219568	No8 X 3/4 INCH LONG POZI PAN STAINLESS STEEL SCREW	
33	219982	M6.40MM LG.POZI-PAN.SCREW.STAINLESS STEEL	
34	219544	M6 SHAKEPROOF WASHER	
35	206753	UNIVERSAL POWER SUPPLY	
36	219318	No6 X 1/2 INCH LONG POZI PAN PLASTITE SCREW	
37	304260	MULTIDECK BLACK BASE MOULDING SUB ASSY	
38	205079	115 MFD MOTOR START CAPACITOR C/W RESISTOR	
39	230208	DIE CAST BOTTOM PLATE ASSEMBLY	
40	230048	26MM EXTERNAL CIRCLIP	
41	214115	GEAR BOX MID SECTION	
42	208207	GEARBOX FASTENER WITH SLOT	
43	219706	M5 X 45MM LONG STAINLESS STEEL HEXAGONAL BOLT	
44	219904	M5 X16MM LONG HEXAGONAL STAINLESS STEEL BOLT	
45	219983	M6 NYLOC STAINLESS STEEL FULL NUT	
46	219647	M6 FORM G STAINLESS STEEL WASHER	