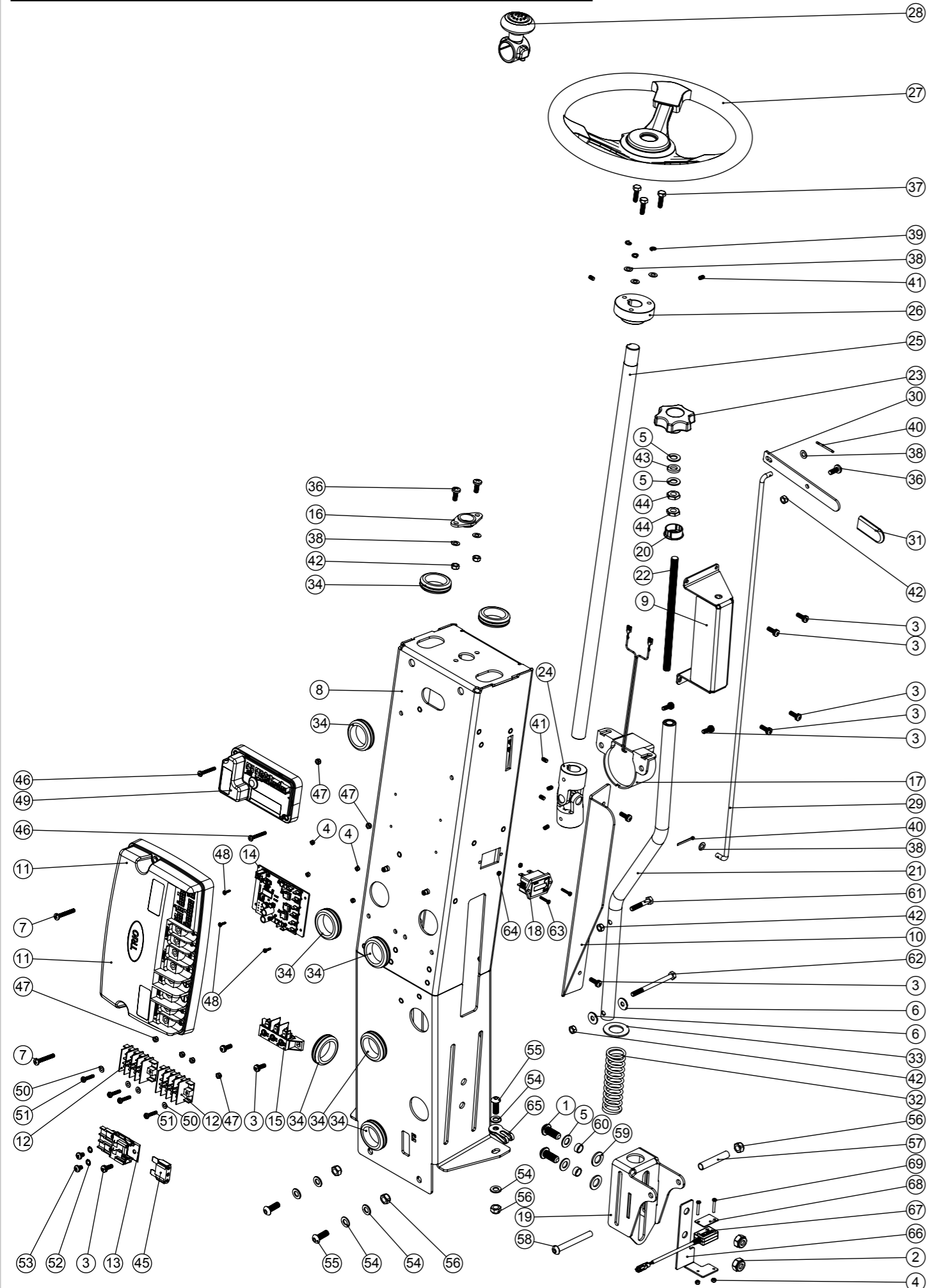


# Numatic International Spare Parts

**Model No:** TTV678 & TRO650 STEERING COLUMN ASSEMBLY  
EXPLODED DRAWING

Internal Code: 905587  
DRAWING: DRW-24947 ISS:A11  
PRO 16/10/2017

NB: FOR WIRING SEE DRAWING: WD-0359, DRW-15631, DRW-13416, DRW-14741



# Numatic International Spare Parts

**Model No:** TTV678 & TRO650 STEERING COLUMN ASSEMBLY  
EXPLODED DRAWING

ITEM	PART NO.	DESCRIPTION	COMMENTS	QTY.
1	219910	M10 X 25MM LONG SOCKET BUTTON HEAD STAINLESS STEEL SCREW		2
2	219897	M10 STAINLESS STEEL NYLON INSERT NUT		2
3	291132	M5 X 16MM LONG STAINLESS STEEL POZI PAN SEMS SCREW		11
4	291154	M3 NYLON INSERT NUT STAINLESS STEEL		6
5	219903	M10 FORM A STAINLESS STEEL WASHER		4
6	219647	M6 FORM G STAINLESS STEEL WASHER		2
7	219661	M5 X 35MM LONG POZI PAN STAINLESS STEEL SCREW	TTV678	2
8	404046	STEERING COLUMN WELDED ASSEMBLY (MANUAL VERSION) (PAINTED SILVER GREY)		1
9	329863	RIDE-ON BRUSH PRESSURE ADJUSTMENT BRACKET		1
10	329888	STEERING COLUMN SPLASH GAURD		1
11	208169	PG CONTROLLER (Trio+HD 100) (MK2)	TTV678	1
12	221095	TERMINAL BLOCK (4 POLE X 6 WAY/TERMINALS)	TRO650 - ONE BLOCK ONLY	2
13	230102	FUSE HOLDER RATED AT 60 AMPS	TTV678	1
14	208566	DC DRIVE PCB	TRO650	1
15	206788	TERMINAL BLOCK	TRO650	1
16	208110	IGUS (R) 2 BOLT PLAIN BEARING 20MM I/D		1
17	321407	HORN & LEAD ASSEMBLY		1
18	208178	HOURS METER	TTV678	1
	392355	TRO HOURS METER BLANKING PLATE	TRO650	
19	303819	RIDE-ON BRUSH PRESSURE ADJUSTMENT SLIDE		1
20	208021	19MM (3/4 INCH) SNAP BUSHING		1
21	303817	BRUSH PRESSURE ADJUSTMENT TUBE WELD ASSEMBLY		1
22	219969	M10 X 1.5MM X 190MM LONG S/S THREADED BAR		1
23	903281	M10 LOBE KNOB (RED)	BLACK VERSION 208354	1
24	206936	UNIVERSAL JOINT		1
25	206940	STEERING SHAFT		1
26	206960	WHEEL HUB (TO SUIT 300MM STEERING WHEEL)		1
27	206961	300MM STEERING WHEEL C/W CENTRE CAP		1
28	208104	STEERING WHEEL KNOB		1
29	391195	PEDAL LATCH RELEASE ROD		1
30	329850	RELEASE HANDLE		1
31	904191	50MM LONG DIP MOULDED HANDLE COVER (RED)	BLACK VERSION 391226	1
32	208016	MANUAL BRUSH DECK ADJUSTMENT SPRING		1
33	291162	M20 FORM B STAINLESS STEEL WASHER		1
34	208029	GROMMET (32MM I/D)		8
35	219558	M5 STAINLESS STEEL NUTSERT		27
36	219646	M6 X 16MM LONG POZI PAN STAINLESS STEEL SCREW		3
37	219976	M6 X 20MM LONG HEXANGONAL HEAD SET SCREW		3
38	219560	M6 FORM B STAINLESS STEEL WASHER		7
39	219549	M6 SINGLE COIL WASHER		3
40	208030	COTTER PIN (2.4MM X 38.1MM)		2
41	219784	M5 X 8MM LONG BLACKODISED GRUB SCREW		6
42	219983	M6 NYLOC STAINLESS STEEL FULL NUT		5
43	219964	NYLON WASHER (18MM O/D X 10.4MM I/D X 3MM THICK)		1
44	219951	A4 (STAINLESS STEEL) M10 HEX LOCK NUT (HALF NUT)		2
45	221091	20 AMP MAXI FUSE	TTV678	1
46	219913	M4 X 30MM LONG POZI PAN STAINLESS STEEL SCREW	TRO650	2
47	219687	M4 STAINLESS STEEL NYLON INSERT NUT		6
48	902534	M3 X 10MM LONG POZI PAN SCREW STAINLESS STEEL	TRO650	4
49	330179	PROGRAMMED 70A MOTOR CONTROLLER (TRO650)	TRO650	1
50	219688	M4 FORM A STAINLESS STEEL WASHER		4
51	219686	M4 X 20MM LONG STAINLESS STEEL POZI PAN MACHINE SCREW		4
52	291084	WASHER.M5.SHAKEPROOF.STAINLESS STEEL		2
53	902896	M5 X 8 A4 S/ST PZ PAN HD M/SCREW		2
54	219578	M8 FORM A STAINLESS STEEL WASHER		8
55	291064	M8 X 22MM LONG SOCKET BOLT STAINLESS STEEL		4
56	219639	M8 STAINLESS STEEL NYLON INSERT NUT		5
57	391199	54MM LONG X 10MM DIAMETER STAINLESS STEEL TUBE		1
58	291142	M8 X 70MM LG SOCKET BUTTON HEAD SCREW STAINLESS STEEL		1
59	219911	PLASTIC WASHER		2
60	303812	12.7MM DIAMETER X 18G X 5.5MM LONG STAINLESS STEEL TUBE		2
61	291127	M6 X 35 LONG HEX BOLT STAINLESS STEEL		1
62	219915	M6 X 80MM LONG STAINLESS STEEL HEXAGONAL HEAD BOLT		1
63	219500	M3 X 16MM LONG STAINLESS STEEL SLOT SCREW	TTV678	2
	219890	M4 X 12MM LONG POZI PAN STAINLESS STEEL SCREW	TRO650	2
64	219502	M3 STAINLESS STEEL FULL NUT	TTV678	2
	219687	M4 STAINLESS STEEL NYLON INSERT NUT	TRO650	2
65	904962	CABLE CLAMP M8x65 (PP)		1
66	907245	REED SWITCH COLUMN BRACKET		1
67	904501	REED SWITCH ASSEMBLY		1
68	906617	REED SWITCH WASHER PLATE		1
69	291155	M3 X 20MM LONG POZI PAN SCREW STAINLESS STEEL		2