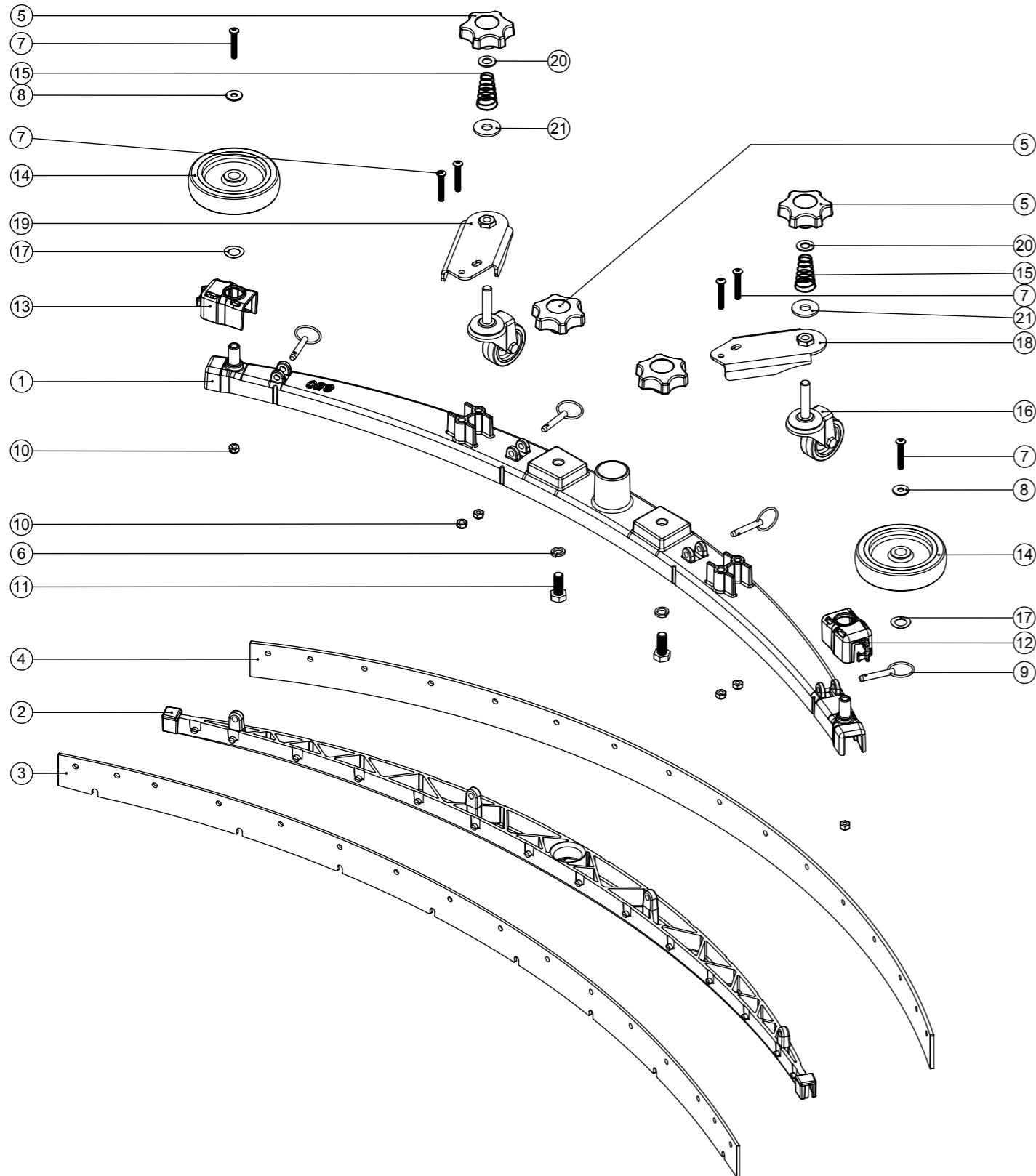


# Numatic International Spare Parts

**Model No:** 850 TWINTEC ALUMINIUM FLOOR TOOL (38MM HOSE)

Internal Code: 599443 900481 900481 900481  
 DRAWING: DRW-18079 ISS:A02  
 PRO 23/10/2015

NB: FOR WIRING SEE DRAWING: N/A



# Numatic International Spare Parts

**Model No:** 850 TWINTEC ALUMINIUM FLOOR TOOL (38MM HOSE)

ITEM:	PART No:	DESCRIPTION	QTY.
1	208197	(850MM SCRUB WIDTH) ALUMINIUM SQUEEGEE CASTING (38MM HOSE FITTING)	1
2	229988	(850MM SCRUB WIDTH) BLADE HOLDER MOULDING (SLOPING PROFILE) (32MM & 38MM HOSE FITTING)	1
3	SEE TABLE	(850MM SCRUB WIDTH) REPLACEMENT (3.2MM / 40 SHORE A) FRONT MONOLAYER SERILOR POLY/BLADE (1085MM LONG)	1
4	SEE TABLE	850MM SCRUB WIDTH REPLACEMENT REAR BLADE (1117MM LONG)	1
5	208354	M10 LOBE KNOB	4
6	219899	M10 SINGLE COIL STAINLESS STEEL WASHER	2
7	219933	M6 X 35MM SOCKET BUTTON HEAD BOLT STAINLESS STEEL	6
8	219647	M6 FORM G STAINLESS STEEL WASHER	2
9	206953	DETENT PINS	4
10	219642	M6 STAINLESS STEEL NYLON INSERT NUT	6
11	219909	M10 X 25MM LONG HEXAGONAL STAINLESS STEEL SCREW	2
12	237322	RIGHT HAND FLOOR TOOL CLIP MOULDING	1
13	237323	LEFT HAND FLOOR TOOL CLIP MOULDING	1
14	208796	4 INCH WHEEL	2
15	229175	CONICAL SPRING	2
16	208497	50MM C50MM DIAMETER GREY TPR TYRED SWIVEL CASTORS C/W M10 X 45 SWAGED STEMASTOR/GREY RUBBER TYRE	2
17	219891	13MM WAVEY WASHER	2
18	304523	ADJUSTABLE FLOOR TOOL CASTOR PLATE RHS WELD ASSY	1
19	304522	ADJUSTABLE FLOOR TOOL CASTOR PLATE LHS WELD ASSY	1
20	219903	M10 FORM A STAINLESS STEEL WASHER	2
21	291124	M10 PENNY WASHER STAINLESS STEEL	2

BLADE	FRONT	REAR
POLYURETHANE 43 SHORE A	206949	206950
POLYURETHANE 50 SHORE A	208193	208195
LINATEX NATURAL RUBBER 40 SHORE A	208194	208196
SERILOR®CLEAN POLYURETHANE FRONT: 40 SHORE A / REAR: 35-45-35 SHORE A	208969	208972