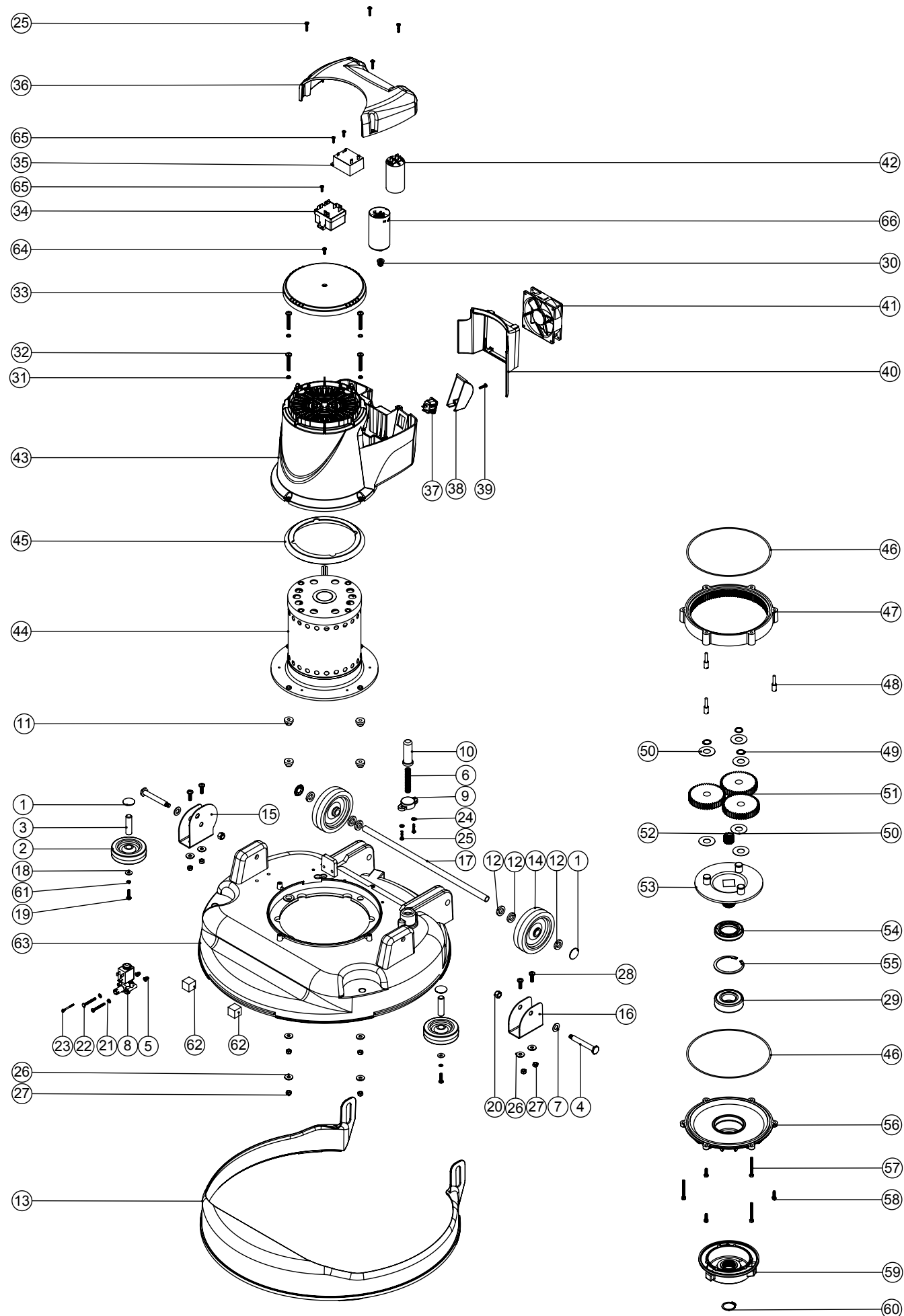


Numatic International Spare Parts

Model No: 550MM MAINS DECK ASSEMBLY

Internal Code: 234957
 DRAWING: DRW-13424 ISS:A07
 TB 11/08/2016

NB: FOR WIRING SEE DRAWING: DRW-18548, DRW-17307, DRW-17309, DRW-18468, DRW-11855, DRW-12474, DRW-12545



Numatic International Spare Parts

Model No: 550MM MAINS DECK ASSEMBLY

ITEM:	PART No:	Description	Comments	QTY.
1	204021	12.7MM STAINLESS STEEL HUB CAP		4
2	204068	3 INCH GREY WHEEL		2
3	206013	BUFFER WHEEL PIN		2
4	208626	TT/TTB4055 PIVOT PIN		2
5	219009	M4 BRASS TAPPEX INSERT		2
6	219692	COMPRESSION SPRING		1
7	219903	M10 FORM A STAINLESS STEEL WASHER		2
8	220348	SOLENOID VALVE 240V 50/60HZ		1
	220350	SOLENOID VALVE 110V 50/60HZ		1
9	223242	PLUNGER MOUNTING PLATE MOULDING		1
10	229128	PLUNGER		1
11	229285	MOTOR MOUNTING SPACER		4
12	229346	SPACER		6
13	229562	SPLASH SKIRT MOULDING		1
14	329187	100MM WHEEL (MODIFIED)		2
15	392248	DECK MOUNT BRACKET		1
16	392279	DECK MOUNT RH (550 DECK VERSION)		1
17	391439	1/2 INCH DIAMETER X 18G STAINLESS STEEL TUBE (0.375)		1
18	219644	M5 FORM G STAINLESS STEEL WASHER		2
19	219571	M5 X 20MM LONG POZI PAN STAINLESS STEEL SCREW		2
20	219639	M8 STAINLESS STEEL NYLON INSERT NUT		2
21	219688	M4 FORM A STAINLESS STEEL WASHER		2
22	219703	M4 X 35MM LONG STAINLESS STEEL POZI PAN SCREW		2
23	219251	REPLACEMENT MPM CONNECTOR M3 SCREW		1
24	219355	M5 FORM A STAINLESS STEEL WASHER		2
25	219568	NO8.3/4 INCH LG.POZI-PAN.SCREW.STAINLESS STEEL.PLASTITE		6
26	219647	M6 FORM G STAINLESS STEEL WASHER		8
27	219642	M6 STAINLESS STEEL NYLON INSERT NUT		8
28	219701	M6 X 20MM LONG POZI PAN STAINLESS STEEL SCREW		4
29	230094	62MM O/D X 30MM I/D X 20MM BEARING (WITH SEALS)		1
30	219453	M8 MULTISERT		1
31	219544	M6 SHAKEPROOF WASHER		4
32	219982	M6 X 40MM LONG POZI PAN STAINLESS STEEL SCREW		4
33	229971	CAP MOULDING		1
34	206823	230V SINGLE SPEED VOLTAGE RELAY		1
	206822	110V/120V VOLTAGE RELAY		1
	208416	120V RELAY	NACE MACHINES ONLY	1
35	206753	UNIVERSAL POWER SUPPLY		1
36	237071	NPR / TT GRAPHITE LID MOULDING		1
37	220584	RENDAR CLIP IN PLUG		1
38	229213	PLUG COVER		1
39	219914	NO6 X 5/8 INCH LONG POZI-PAN PLASTITE STAINLESS STEEL SCREW		1
40	229972	FAN GUARD MOULDING		1
41	205072	PROCESSED 12V DC BRUSHLESS FAN		1
42	220876	20 MFD MOTOR RUN CAPACITOR (450V)	220V & 230V MACHINES	1
	208211	80uF MOTOR RUN CAPACITOR	120V MACHINES	1
	208219	70uF RUN CAPACITOR	110V MACHINES	1
	208210	MOTOR START CAPACITOR 480 MFD C/W RESISTOR & M8 STUD	110V & 120V MACHINES	1
43	328132	GRAPHITE MOTOR COWL MOULDING PRINTED	PRINTED NUMATIC	1
	330008	TWINTec MAINS MOTOR COWL MOULDING (GRAPHITE) (NO LOGO)	NO PRINT	1
44	205217	COMBINED INDUCTION MOTOR 4POLE 220-240V 50Hz		1
	205219	COMBINED INDUCTION MOTOR 4POLE 220V 60Hz		1
	205220	COMBINED INDUCTION MOTOR 4POLE 120V 60Hz		1
	205221	COMBINED INDUCTION MOTOR 4POLE 110V 50Hz		1
45	227556	TOP MOTOR GASKET		1
46	230001	V OIL SEAL		2
47	214115	GEAR BOX MID SECTION		1
48	208207	GEARBOX FASTENER WITH SLOT		3
49	230015	15MM EXTERNAL CIRCLIP		3
50	230215	35MM X 15 I/D ALUMINIUM WASHER		6
51	230013	48 TOOTH SPUR GEAR(STANDARD SPEED 50/60HZ)		3
52	230027	12 TOOTH PINION GEAR (STANDARD SPEED)		1
53	230291	PLANET CARRIER & PIN ASSEMBLY (50HZ STANDARD SPEED)		1
54	230158	VITON OIL SEAL (BROWN)		1
55	230200	62MM INTERNAL CIRCLIP		1
56	230208	DIE CAST BOTTOM PLATE ASSY	INCLUDE 58, 59, 31	1
57	219706	M5 X 45MM LONG STAINLESS STEEL HEXAGONAL BOLT		3
58	219904	M5 X16MM LONG HEXAGONAL STAINLESS STEEL BOLT		3
59	230207	DIE CAST CHUCK MACHINED		1
60	230048	26MM EXTERNAL CIRCLIP		1
61	291084	WASHER.M5.SHAKEPROOF.STAINLESS STEEL		2
62	902352	FOAM SPACER 20MM		2
63	304404	TTB4055 DECK MOULDING DRILLED (NEW DESIGN)		1
64	219890	M4 X 12MM LONG POZI PAN STAINLESS STEEL SCREW		1
65	291061	No6 X 1/2 INCH LONG POZI PAN PLASTITE SCREW (STAINLESS STEEL)		3
66	208265	MOTOR START CAPACITOR 98 MFD		1
67	291145	M4 SHAKEPROOF WASHER STAINLESS STEEL		1