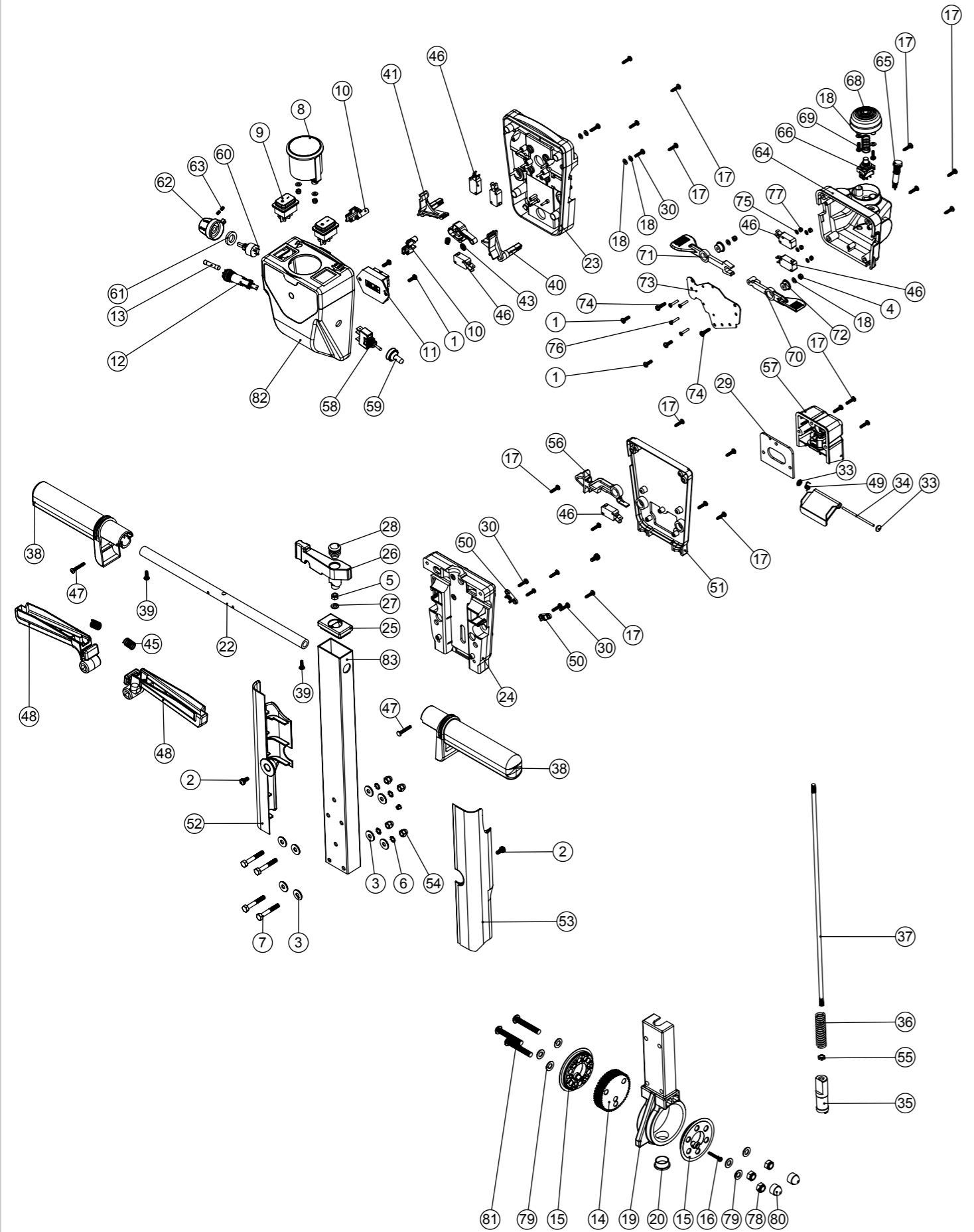


# Numatic International Spare Parts

Model No: TGB4055T EXPLODED VIEW: HANDLE

NB: FOR WIRING SEE DRAWING:  
230V : DRW-24133  
120V : DRW-24136

Internal Code: -  
TB DRAWING: DRW-23404 ISS:A05



# Numatic International Spare Parts

Model No: TGB4055T EXPLODED VIEW: HANDLE

ITEM:	PART No:	DESCRIPTION	COMMENTS:	QTY.
1	219569	NO8 1/2 INCH. LG.POZI-PAN.SCREW.STAINLESS STEEL.PLASTITE		5
2	291131	M5 X 12MM LONG STAINLESS STEEL POZI PAN SEMS SCREW		3
3	219647	M6 FORM G STAINLESS STEEL WASHER		8
4	219687	M4 STAINLESS STEEL NYLON INSERT NUT		4
5	219642	M6 STAINLESS STEEL NYLON INSERT NUT		1
6	902353	M6 EXTERNAL SHAKEPROOF WASHER STAINLESS STEEL		4
7	291125	M6 X 40 LONG HEX BOLT STAINLESS STEEL		4
8	902532	BATTERY DISCHARGE INDICATOR + HOUR METER 24V		1
9	902235	SWITCH DPST RED ILLUMINATED WITH MEMBRANE 24V		2
10	903558	TGB HANDLE BOSS		2
11	903766	DMH Terminal Block PCB Assembly		1
12	903032	BULGIN PANEL MOUNT FUSEHOLDER		1
13	903066	FUSE 2.5A (6.3x32)		1
14	900397	MINI ADJUSTMENT GEAR		1
15	900396	ADJUSTMENT GEAR SPACER		2
16	291150	NO6 X 1 INCH LONG POZI PAN SCREW S/S		1
17	219370	NO8 X 5/8 INCH LONG PLASTITE STAINLESS STEEL SCREW		19
18	219688	M4 FORM A STAINLESS STEEL WASHER		10
19	900398	HANDLE CASTING MACHINED (HNS VERSION)		1
20	229099	25MM DIA HOLE PLUG		1
21	229009	BLANKING PLUG		1
22	338269	CROSS TUBE		1
23	227576	FRONT INNER HALF MOULDING	STANDARD MACHINE	1
	229508	FLAME RETARDANT FRONT INNER HALF MOULDING	FLAME RETARDENT 120V	1
24	227577	REAR INNER HALF MOULDING	STANDARD MACHINE	1
	229509	FLAME RETARDANT REAR INNER HALF MOULDING	FLAME RETARDENT 120V	1
25	903546	HANDLE PLUG MOULDING (RED)		1
26	903545	ADJUSTMENT LEVER MOULDING (RED)		1
27	219493	M6 NYLON WASHER		1
28	20638V	19MM BLACK TUBE END STOP		1
29	202105	SOCKET COVER SEALING GASKET		1
30	219914	NO6 X 5/8 INCH LONG POZI-PAN PLASTITE STAINLESS STEEL SCREW		5
31	219107	NO6.5/8 INCH LG.POZI-PAN.SCREW.Z/PL.PLASTITE		1
32	227781	FLAP MOULDING		1
33	219832	3MM DIAMETER STARLOCK		2
34	390979	72MM LONG X 3MM DIAMETER STAINLESS STEEL BAR		1
35	229073	GEAR LOCKING PIN		1
36	229138	SPRING		1
37	229461	440MM HANDLE LOCKING ROD		1
38	227580	HAND GRIP MOULDING		2
39	219270	NO8 X 1/2 INCH LONG POZI PAN SELF TAP SCREW		2
40	227585	LEFT HAND SWITCH OPERATING LEVER MOULDING		1
41	227586	RIGHT HAND SWITCH OPERATING LEVER MOULDING		1
42	227587	CENTRE SWITCH OPERATING LEVER MOULDING		1
43	219805	4MM SPIREFIX		1
44	219804	SWITCH COMPRESSION SPRING		1
45	219803	TRIGGER COMPRESSION SPRING		2
46	229483	SNAP ACTION SWITCH		6
47	219811	NO8 X 1 INCH LONG POZI-PAN SELF TAP SCREW		2
48	903547	TRIGGER MOULDING (RED)		2
49	219819	TORSION SPRING		1
50	229669	LOLINE HANDLE CABLE CLAMP		2
51	303509	MODIFIED REAR COVER	STANDARD MACHINE	1
	303777	PROCESSED TRACTION DRIVE REAR HANDLE COVER (FLAME RETARDENT)	FLAME RETARDENT 120V	1
52	237692	HANDLE CABLE COVER L/H		1
53	237693	HANDLE CABLE COVER R/H		1
54	219764	M6 STAINLESS STEEL DOME NUT		4
55	219099	M6 HALF NUT		1
56	227584	INTERLOCK LEVER MOULDING		1
57	904030	240V EMI FILTER WITH SOCKET COVER ASSEMBLY (PROCESSED)	240V VERSION	1
	904031	120V EMI FILTER WITH SOCKET COVER ASSEMBLY (PROCESSED)	120V VERSION	1
58	206786	SWITCH		1
59	206785	SWITCH COVER C/W NUT		1
60	270316	POTENTIOMETER TYPE Pe30 22k OHMS 20% 3W (WITH PANEL SEAL) (ROUND SHAFT WITH FLAT / NO SLOT IN SHAFT END)		1
61	229346	SPACER		1
62	903498	SPEED ADJUSTMENT KNOB C/W INSERT (RED)		1
63	219744	M4 X 6MM LONG BLACKODISED GRUB SCREW		2
64	237315	TWINTEC HANDLE REAR POD MOULDING (LESS SPEED CONTROL / DIRECTIONAL SWITCH HOLES)	STANDARD MACHINE	1
	237316	FLAME RETARDANT TWINTEC HANDLE REAR POD MOULDING (LESS SPEED CONTROL / DIRECTIONAL SWITCH HOLES)	FLAME RETARDENT 120V	1
65	270291	GREEN LED INDICATOR 2V C/W 2.2K RESISTOR		1
66	270295	PUSH BUTTON SWITCH		1
67	219816	COMPRESSION SPRING		1
68	227683	EMERGENCY STOP BUTTON		1
69	219601	NO8 X 3/8 INCH LONG POZI PAN PLASTITE SCREW		2
70	904159	LH DIRECTION TRIGGER (RED)		1
71	904158	RH DIRECTION TRIGGER (RED)		1
72	206579	SHOULDERED SPACER		2
73	329298	DIRECTION TRIGGER MOUNTING PLATE		1
74	219862	M4 X 16MM LONG POZI PAN STAINLESS STEEL SCREW		2
75	219501	M3 FORM A STAINLESS STEEL WASHER		4
76	902065	M3 X 16MM LONG POZI PAN SCREW STAINLESS STEEL		4
77	291154	M3 NYLON INSERT NUT STAINLESS STEEL		4
78	219639	M8 STAINLESS STEEL NYLON INSERT NUT		3
79	219578	M8 FORM A STAINLESS STEEL WASHER		6
80	903260	BOLT AND NUT CAP		2
81	219922	M8 X 50MM LONG SOCKET BUTTON HEAD STAINLESS STEEL BOLT		3
82	903557	TGB HANDLE FRONT COVER (TRACTION) TFPP	STANDARD MACHINE	1
	903561	TGB HANDLE FRONT COVER (TRACTION) FRPP	FLAME RETARDENT 120V	1
83	903603	TGB/TTG 430MM PROCESSED ALI HANDLE PAINT SILVER		1