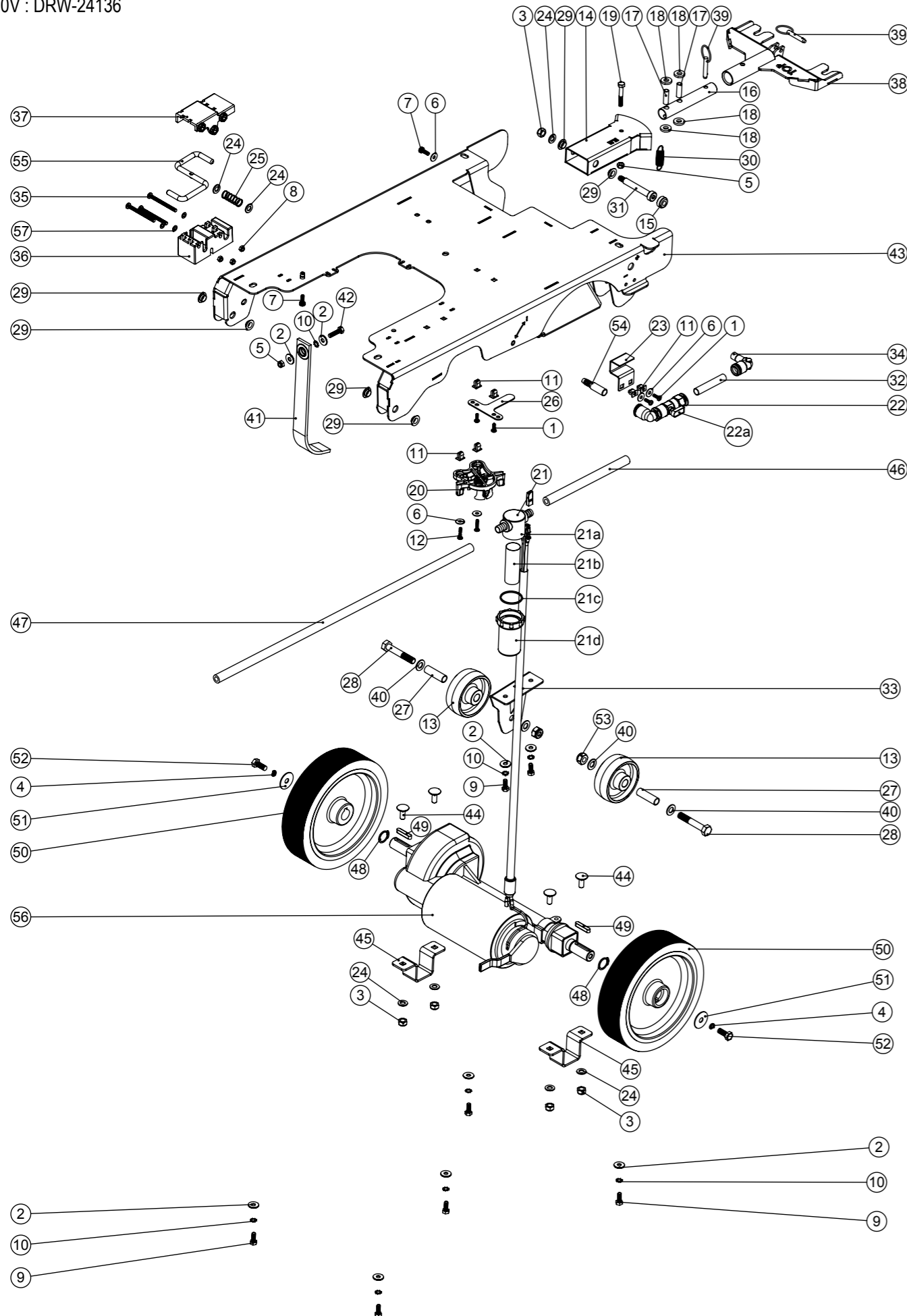


Numatic International Spare Parts

Model No: TGB4055T EXPLODED VIEW: CHASSIS

Internal Code: -
TB DRAWING: DRW-23402 ISS:A09

NB: FOR WIRING SEE DRAWING:
230V : DRW-24133
120V : DRW-24136



Numatic International Spare Parts

Model No: TGB4055T EXPLODED VIEW: CHASSIS

ITEM:	PART No:	DESCRIPTION	COMMENTS:	QTY.
1	219569	NO8. 1/2 INCH. LG.POZI-PAN.SCREW.STAINLESS STEEL.PLASTITE		4
2	219647	M6 FORM G STAINLESS STEEL WASHER		9
3	219639	M8 STAINLESS STEEL NYLON INSERT NUT		5
4	219898	M8 SINGLE COIL STAINLESS STEEL WASHER		2
5	219642	M6 STAINLESS STEEL NYLON INSERT NUT		2
6	219644	M5 FORM G STAINLESS STEEL WASHER		5
7	291132	M5 X 16MM LONG STAINLESS STEEL POZI PAN SEMS SCREW		2
8	219633	M5 STAINLESS STEEL NYLON INSERT NUT		3
9	219719	M6 X 16MM LONG HEXAGONAL STAINLESS STEEL HEAD BOLT		7
10	902353	M6 EXTERNAL SHAKEPROOF WASHER STAINLESS STEEL		8
11	900986	NYLON GROMMET NUT (PLASTIC INSERT TO SUIT No 8 PLASTITE SCREW)		6
12	219568	NO8.3/4 INCH LG.POZI-PAN.SCREW.STAINLESS STEEL.PLASTITE		2
13	206713	80MM DIAMETER WHITE WHEEL		2
14	304359	TT/TTB/4045/4055 SQUEEGEE MOUNT WELD ASSEMBLY		1
15	237632	SHOULDER BOLT COVER		1
16	304356	FLOOR TOOL PIVOT TUBE		1
17	206954	SPIRO SPACER		2
18	206964	SLIDE NYLON SPACER		4
19	291125	M6 X 40 LONG HEX BOLT STAINLESS STEEL		1
20	901006	FILTER MOUNTING BRACKET		1
21	208888	EXTENDED STRAINER		1
21a	208827	STRAINER BLACK TOP	SPARE PART	1
21b	208889	EXTENDED STRAINER 50 MESH SCREEN	SPARE PART	1
21c	208830	STRAINER GASKET	SPARE PART	1
21d	208890	EXTENDED STRAINER CLEAR BOWL	SPARE PART	1
22	901541	12MM SWIVEL ELBOW PUSH FIT TO 12MM PUSH FIT BALL VALVE ASSEMBLY		1
22a	901544	TAP HANDLE C/W COVER AND M3X6MM SCREW (SPARE ITEM)	SPARE PART	1
23	392314	10MM TAP BRACKET		1
24	219578	M8 FORM A STAINLESS STEEL WASHER		7
25	208578	DECK LOCK SPRING		1
26	321902	SILENCER CLAMP		1
27	391440	1/2 INCH X 18G X 41MM LONG STAINLESS STEEL SPACER TUBE		2
28	219894	M10 X 60MM LONG HEXAGONAL STAINLESS STEEL BOLT		2
29	208312	IGUS BEARING (GFM 101205)		6
30	208619	FLOOR TOOL SPRING		1
31	208574	M8 X 10 X 60MM LONG HEX SOCKET SHOULDER BOLT		1
32	901553	NYLON TUBE 12MM OD X 10MM ID (65MM)		1
33	903611	TGB TRANSPORT WHEEL BRACKET WELD ASSEMBLY PAINT SILVER		1
34	901545	ELBOW ANGLE CONNECTOR 12MM PUSH IN TO 12MM STEM		1
35	901558	M5 X 60MM STAINLESS STEEL POZI PAN MACHINE SCREW		3
36	901280	LATCH BLOCK BOTTOM MOULDING		1
37	901279	LATCH BLOCK TOP MOULDING		1
38	304466	FLOOR TOOL BRACKET ASSEMBLY (TT/TTB4045/4055)		1
39	206953	DETENT PINS		2
40	219903	M10 FORM A STAINLESS STEEL WASHER		4
41	903683	ANTI-STATIC STRAP (CUT TO LENGHT: 270MM LONG)		1
42	219925	M6 x 25MM LONG STAINLESS STEEL HEX SCREW		1
43	904155	TGB4055T TRACTION CHASSIS WELD ASSY PAINTED SILVER		1
44	291104	M8 X 20 COACH BOLT S/S		4
45	904156	TGB TRANSAXLE MOUNTING BRACKET		2
46	330230	SILICON TUBE 8MM I/D X 3.2MM WALL SECTION (CUT 400MM)		1
47	391216	SILICON TUBE 600MM LONG X 8MM I/D X 3.2MM WALL SECTION		1
48	219889	19MM HEAVY DUTY CIRCLIP		2
49	206744	6MM X 6MM X 32MM FEATHER KEY		2
50	204115	200MM X 50MM TRACTION WHEEL - GREY PU TREAD COMBED PROFILE		2
51	219877	M8 X 30 STAINLESS STEEL WASHER		2
52	219717	M8 X 20MM LONG HEXAGONAL STAINLESS STEEL BOLT		2
53	219897	M10 STAINLESS STEEL NYLON INSERT NUT		2
54	901534	PUSH IN BARBED CONNECTOR - 12MM OD 8MM ID		1
55	904440	DECK LATCH BAR		1
56	904753	465MM LONG ASI TRANSAXLE C/W SHORTNED 640MM WIRES		1
57	219355	M5 FORM A STAINLESS STEEL WASHER		3