

# Numatic International Spare Parts

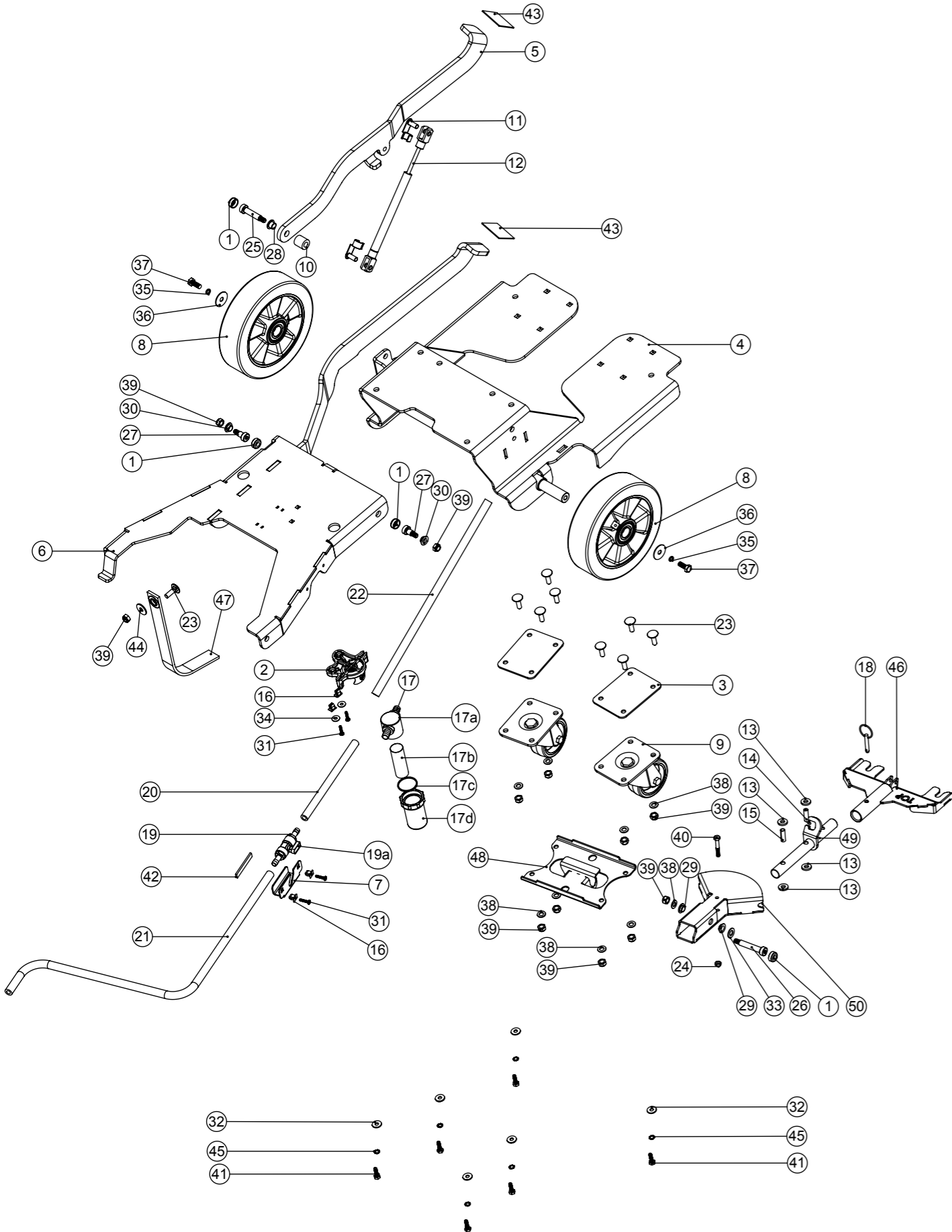
Model No: TGB6055 EXPLODED VIEW : CHASSIS

Internal Code: -

MS4

DRAWING: DRW-21593 ISS:A12  
24/10/2016

NB: FOR WIRING SEE DRAWING: N/A



# Numatic International Spare Parts

Model No: TGB6055 EXPLODED VIEW : CHASSIS

*Provisional*

ITEM:	PART No:	Description	Comments	QTY
1	237632	SHOULDER BOLT COVER		4
2	901006	FILTER MOUNTING BRACKET		1
3	329581	CASTOR ADAPTOR SPACER		2
4	902266	ETB6055 CHASSIS WELD ASSEMBLY PAINTED SILVER		1
5	404131	TTV4555 EXTRA LOAD PEDAL Z/PL		1
6	902268	ETB6055 DECK LIFTING LINK Z/PL		1
7	902262	TAP BRACKET PAINTED SILVER		1
8	204120	WICKE 200 X 50MM ALU WHEEL		2
9	204116	HEAVY DUTY CASTOR. BLUE TYRE		2
10	208350	NYLON SPACER I/D 10.2MM X O/D 20.0MM X LENGTH 21.0MM		1
11	208634	GAS RAM CLEVIS CLIP		2
12	208623	280N GAS RAM		1
13	206964	SLIDE NYLON SPACER		4
14	206963	VERTICAL NYLON SPACER		1
15	206954	SPIRO SPACER		1
16	900986	NYLON GROMMET NUT (PLASTIC INSERT TO SUIT No 8 PLASTITE SCREW)		4
17	208888	EXTENDED STRAINER		1
17a	208827	STRAINER BLACK TOP	SPARE PART	1
17b	208889	EXTENDED STRAINER 50 MESH SCREEN	SPARE PART	1
17c	208830	STRAINER GASKET	SPARE PART	1
17d	208890	EXTENDED STRAINER CLEAR BOWL	SPARE PART	1
18	206953	DETENT PINS		1
19	208761	10MM HOSE TAIL TO 10MM HOSE TAIL BALL VALVE ASSEMBLY		1
19a	901544	TAP HANDLE C/W COVER AND M3X6MM SCREW (SPARE ITEM)	SPARE PART	1
20	303713	SILICONE TUBE (210MM LONG)		1
21	391216	SILICON TUBE 8MM I/D X 3.2MM WALL SECTION (CUT 600MM)		1
22	304443	SILICON TUBE 8MM I/D X 3.2MM WALL SECTION (CUT 420MM)		1
23	902010	M8 X 25 COACH BOLT S/S		9
24	219642	M6 STAINLESS STEEL NYLON INSERT NUT		1
25	208355	M8 X 10 X 40MM LONG HEX SOCKET SHOULDER BOLT		1
26	208333	M8 X 10 X 50MM LONG HEX SOCKET SHOULDER BOLT		1
27	208313	M8 X 10 X 12MM LONG HEX SOCKET SHOULDER BOLT		2
28	208331	IGUS BEARING (GFM 101209)		1
29	208312	IGUS BEARING (GFM 101205)		2
30	208330	IGUS BEARING (GFM 101206)		2
31	219568	NO8.3/4 INCH LG.POZI-PAN.SCREW.STAINLESS STEEL.PLASTITE		4
32	219647	M6 FORM G STAINLESS STEEL WASHER		6
33	219903	M10 FORM A STAINLESS STEEL WASHER		1
34	219644	M5 FORM G STAINLESS STEEL WASHER		2
35	219898	M8 SINGLE COIL STAINLESS STEEL WASHER		2
36	219877	M8 X 30 STAINLESS STEEL WASHER		2
37	219717	M8 X 20MM LONG HEXAGONAL STAINLESS STEEL BOLT		2
38	219578	M8 FORM A STAINLESS STEEL WASHER		9
39	219639	M8 STAINLESS STEEL NYLON INSERT NUT		12
40	291125	M6 X 40 LONG HEX BOLT STAINLESS STEEL		1
41	219976	M6 X 20MM LONG HEXANGONAL HEAD SET SCREW		6
42	902760	3MM THICK X 9MM WIDE INSEAL (212052 x 60MM LONG)		1
43	903064	FOOT PEDAL PAD (RED)	903063 CUT TO LENGHT	2
44	219716	M8 FORM G STAINLESS STEEL WASHER		1
45	902353	M6 EXTERNAL SHAKEPROOF WASHER STAINLESS STEEL		6
46	304466	FLOOR TOOL BRACKET ASSEMBLY (TT/TTB4045/4055)		1
47	903323	ANTI-STATIC STRAP (CUT TO LENGHT: 320MM LONG)		1
48	904960	FLOOR TOOL LIFTING PIVOT BRACKET WELD ASSY PAINTED SILVER		1
49	905730	TGB6055 FLOOR TOOL PIVOT TUBE ASSEMBLY		1
50	905728	FLOOR TOOL LIFTING PLATE WELD ASSEMBLY (3MM M/S) Z/PL		1