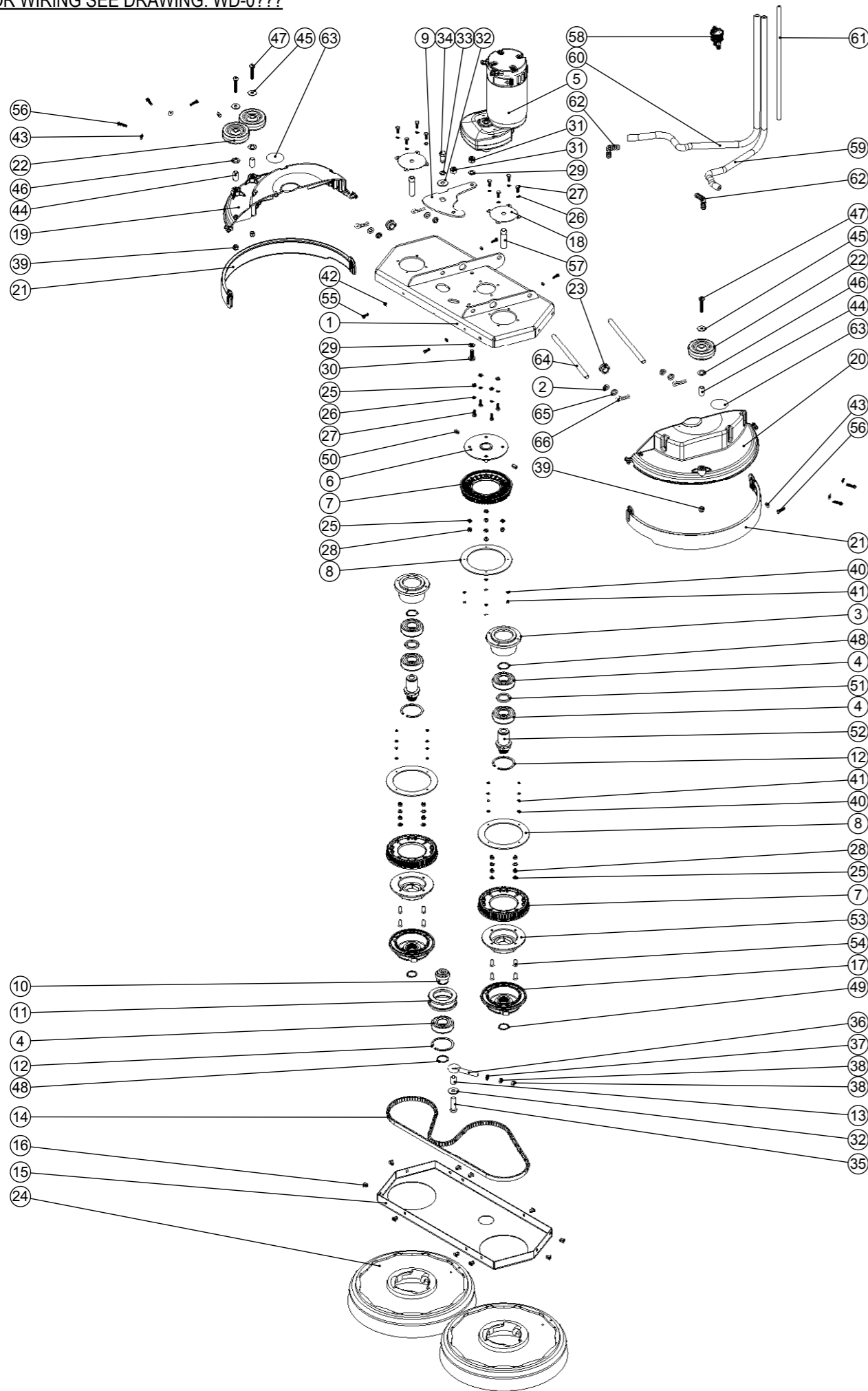


Numatic International Spare Parts

Model No: TWIN BRUSH DECK ASSY

NB: FOR WIRING SEE DRAWING: WD-0???

Internal Code: 903512
 DRAWING: DRW-21860 ISS:A08
 MS5 21/11/16



Numatic International Spare Parts

Model No: TWIN BRUSH DECK ASSY

ITEM:	PART No:	DESCRIPTION	QTY.
1	903617	TWIN BRUSH DECK WELD ASSY ZINC PLATED	1
2	208330	IGUS BEARING (GFM 101206)	4
3	903420	BEARING HOUSING	2
4	208878	BEARING I/D30MM O/D62MM	5
5	205192	MRP6 IP20 AMER MOTOR	1
6	904836	BRUSH MOTOR PULLEY PLATE WELD ASSY ZINC PLATED	1
7	237680	LARGE PULLEY 56TH	3
8	903423	PULLEY FLANGE PLATE	3
9	903619	TENSIONER PIVOT PLATE ZINC PLATED	1
10	903419	TENSIONER SHAFT	1
11	903424	IDLER	1
12	230200	62MM INTERNAL CIRCLIP	3
13	903429	1/2 INCH DIA X 18G S/S TUBE (0.022)	1
14	903438	BELT (GATES GT3 - 1440 - 8MGT - 12)	1
15	903428	TWIN BRUSH DECK - MAIN PLATE COVER	1
16	900986	NYLON GROMMET NUT (PLASTIC INSERT TO SUIT No 8 PLASTITE SCREW)	10
17	230285	MODIFIED CHUCK (CRO)	2
18	903432	TWIN BRUSH WATER FEED PLATE	2
19	903433	TWIN BRUSH RH DECK MOULDING	1
20	903434	TWIN BRUSH LH DECK MOULDING	1
21	903437	TWIN BRUSH DECK SPLASH SKIRT	2
22	204068	3 INCH GREY WHEEL	3
23	208143	20MM GROMMET X 6MM PANEL THICKNESS	2
24	903449	370MM POLYSCRUB BRUSH	2
25	219870	M6 FORM A WASHER STAINLESS STEEL	16
26	219718	WASHER.M6.SPRING.STAINLESS STEEL	12
27	219719	M6 X 16MM LONG HEXAGONAL STAINLESS STEEL HEAD BOLT	12
28	219642	M6 STAINLESS STEEL NYLON INSERT NUT	12
29	219903	M10 FORM A STAINLESS STEEL WASHER	2
30	219909	M10 X 25MM LONG HEXAGONAL STAINLESS STEEL SCREW	1
31	219897	M10 STAINLESS STEEL NYLON INSERT NUT	2
32	291124	M10 PENNY WASHER STAINLESS STEEL	2
33	219899	M10 SINGLE COIL STAINLESS STEEL WASHER	1
34	291141	M10 X 25MM LG HEX HEAD SCREW STAINLESS STEEL C/W THREADLOCK	1
35	903430	M10 X 40MM LONG HEXAGONAL STAINLESS STEEL SCREW	1
36	903422	M8 X 80MM EYE BOLT ZINC PLATED	1
37	219578	M8 FORM A STAINLESS STEEL WASHER	1
38	219079	M8 PLAIN NUT	2
39	219639	M8 STAINLESS STEEL NYLON INSERT NUT	3
40	219688	M4 FORM A STAINLESS STEEL WASHER	12
41	291061	No6 X 1/2 INCH LONG POZI PAN PLASTITE SCREW (STAINLESS STEEL)	12
42	219355	M5 FORM A STAINLESS STEEL WASHER	4
43	219644	M5 FORM G STAINLESS STEEL WASHER	6
44	391224	1/2 INCH DIA X 18G S/S TUBE (0.026)	3
45	219716	M8 FORM G STAINLESS STEEL WASHER	3
46	219302	M12 FORM B STAINLESS STEEL WASHER	3
47	219822	M8 X 45MM LONG SOCKET BUTTON STAINLESS STEEL HEAD BOLT	3
48	903435	30MM EXTERNAL CIRCLIP	3
49	230048	26MM EXTERNAL CIRCLIP	2
50	291139	6MM X 16MM STAINLESS STEEL ROLL PIN	2
51	903439	SPACER O/D 40MM X I/D 30MM X 5MM	2
52	903421	BRUSH PULLEY SHAFT	2
53	903440	PULLEY MOUNTING ADAPTER	2
54	903441	M6 X 20MM LONG STAINLESS STEEL COUNTERSUNK POZI SCREW	8
55	219568	NO8.3/4 INCH LG.POZI-PAN.SCREW.STAINLESS STEEL.PLASTITE	4
56	219369	No8 X 1 INCH LONG POZI PAN STAINLESS STEEL PLASTITE SCREW	6
57	903446	MOTOR SHAFT INSERT	2
58	903445	FLOW DIVIDER ASSY	1
59	903447	LH SOLUTION TUBE	1
60	903448	RH SOLUTION TUBE	1
61	903463	VENT TUBE	1
62	903641	10MM HOSETAIL ELBOW	2
63	903845	DO NOT STAND HERE WARNING LABEL Ø50MM	2
64	903436	PIVOT ROD	2
65	219964	NYLON WASHER (18MM O/D X 10.4MM I/D X 3MM THICK)	4
66	291102	SMALL R PIN (S MASTERS 89100 SS)	4